

Converting Colors

Hex(D9C1CB)

Have a look what the booklet for
Hex(D9C1CB) contains.

Hex(D9C1CB)	3
<i>Conversions</i>	4
<i>Details</i>	6
<i>Harmonies</i>	11
<i>Previews</i>	23
<i>Color Blindness Simulation</i>	26
<i>CSS Examples</i>	29

Color

Hex(D9C1CB)

Conversions

Conversions Part 1

Format	Color
Hex	D9C1CB
RGB	217, 193, 203
RGB Percent	85%, 76%, 80%
CMY	0.1490, 0.2431, 0.2039
CMYK	0.00, 0.11, 0.06, 0.15
HSL	335°, 24%, 80%
HSV	335°, 11%, 85%
XYZ	58.4647, 57.2034, 64.4599
YIQ	201.3160, 11.0940, 8.1980

Conversions

Conversions Part 2

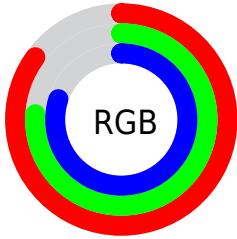
Format	Color
R_{YB}	217, 193, 203
Decimal	14270923
CIE _{Lab}	80.29, 10.17, -1.91
CIE _{LCh}	80, 10.346, 349.359
Yxy	57.2034, 0.3246, 0.3176
Android (android.graphics.Color)	4292461003 (0xFFD9C1CB)
YUV	201.3160, 0.8302, 13.7549
Hunter-Lab	75.6330, 5.6239, 2.4119

Details

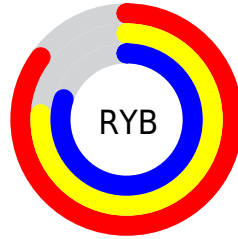
The Hex color **D9C1CB** is a light color, and the websafe version is hex **CCCCCC**. A complement of this color would be **C1D9CF**, and the grayscale version is **C9C9C9**.

A 20% lighter version of the original color is **FFF9FF**, and **A28B95** is the 20% darker color. If you saturate the color by 10%, you get **D9ABBE**, and if you desaturate by 10%, it is **D9D7D8**.

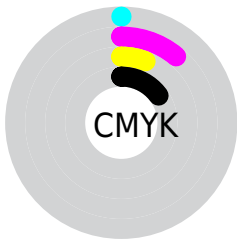
Distribution



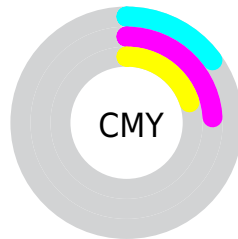
- Red (85%)
- Green (76%)
- Blue (80%)



- Red (85%)
- Yellow (76%)
- Blue (80%)



- Cyan (0%)
- Magenta (11%)
- Yellow (6%)
- Black (15%)



- Cyan (15%)
- Magenta (24%)
- Yellow (20%)

Brightness & Saturation Gradients

These gradients show how the Hex color D9C1CB changes by changing the brightness by 10 percent. The first figure shows a shift by +10% for each color and the second figure -10%.

Similar to the brightness gradients but the following saturation gradients show a change of the Hex color D9C1CB by changing the saturation by 10% instead.

 D9C1CB

FFFFFF

 FFF9FF

 D9C1CB

 BDA6B0

 A28B95

 88727B

 6E5962

 56424B

 3E2C34

 28171F

 150006

 000000

 D9C1CB

 D9C1CB

 D9ABBE

 D9D7D8

 D996B2

 D9ECE4

 D980A5

 D9FFF1

 D96A98

 D9FFFE

 D9558C

 D9FFFF

 D93F7F

 D92972

 D91366

 D9005A

Harmonies

Analogous

The Analogous color harmony consists of three colors that are next to each other on the color wheel.



D1C3D4



D9C1CB



DCC1C1

Triad

The Triadic color harmony groups three colors that are evenly spaced from another and form a triangle on the color wheel.



D9C1CB



C8C8B5



B1CCD5

Complementary

The Complementary color scheme is a pair of colors which are on the opposite of each other on the color wheel.



D9C1CB



C1D9CF

Split Complementary

Split-complementary colors differ from the complementary color scheme. The scheme consists of three colors, the original color and two neighbors of the complement color.



AFCDCD



D9C1CB



BDCBBA

Square

The Square scheme is like the rectangle color scheme, but the four colors are evenly spaced on the color wheel.



D9C1CB



D3C5B4



B4CDC3



B9C9DA

Rectangle

The Rectangle color scheme consists of four colors that form a rectangle on the color wheel.



D9C1CB



DBC2BB



B4CDC3



B0CCD3

Sweetspot

The Sweet Spot groups the original color and five complimentary colors.



D9C1CB



FFF7FB



CFC1D9



807A7D



000000



808080

Same Dimension

The Same Dimension uses a secret algorithm to generate beautiful new colors.



D9C1CB



FFDEEC



D9C3C1



6E6367



AD0048



2E0013

Inverse Universe

The Inverse Universe completely reimagines the original color for something new.



D9C1CB



FFDEEC



C1D7D9



6E6367



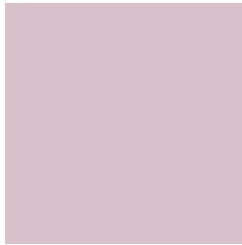
AD0048



2E0013

Previews

White Background



This preview shows how the Hex color D9C1CB looks on a white background.

Color Contrast Check

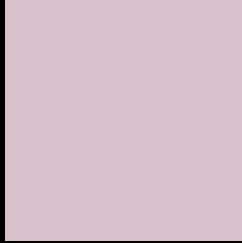
Large Text (above 18pt) WCAG AA × Fail

Any Text WCAG AA × Fail

Large Text (above 18pt) WCAG AAA × Fail

Any Text WCAG AAA × Fail

Black Background



This preview shows how the Hex color D9C1CB looks on a black background.

Color Contrast Check

Large Text (above 18pt) WCAG AA ✓ Pass

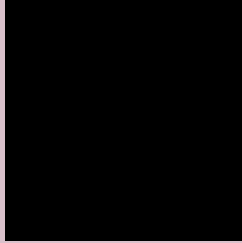
Any Text WCAG AA ✓ Pass

Large Text (above 18pt) WCAG AAA ✓ Pass

Any Text WCAG AAA ✓ Pass

If you want to check with other color combinations, try the [Color Contrast Checker](#).

Hex D9C1CB Background



This preview shows how black text looks on a background with the Hex color D9C1CB.

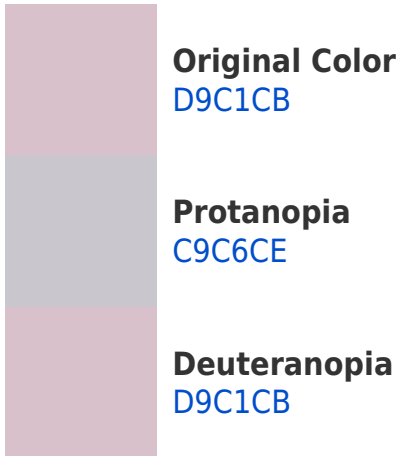


This preview shows how white text looks on a background with the Hex color D9C1CB.

Color Blindness Simulation

Color vision deficiency is a very complex topic, and I could not describe the different causes any better than Wikipedia does, so if you want to learn more, you should check out their [article about color blindness](#).

Dichromacy



Trichromacy



Original Color
D9C1CB

Protanomaly
CFC4CD

Deuteranomaly
D9C1CB

Tritanomaly
DAC0CE

Monochromacy



Original Color
D9C1CB

Achromatopsia
C9C9C9

Achromatomaly
CFC6CA

CSS Examples

Text

The CSS property to change the color of the text to Hex D9C1CB is called "color". The color property can be set on classes, ids or directly on the HTML element.

This example shows how text in the color #D9C1CB looks like.

```
.text, #text, p{  
    color:#D9C1CB  
}
```

If you want to add a text shadow in that color use the text-shadow property, you can generate a text shadow directly with our [CSS Text Shadow Generator](#).

Here you see how black text with a 4 pixel #D9C1CB colored shadow looks like.

```
.shadow{ text-shadow: 4px 4px 2px #D9C1CB  
}
```

Border

The CSS property to change the border of an element to Hex D9C1CB is called "border". The border property can be set on classes, ids or directly on the HTML element.

This example shows the color as border, it can be applied via the CSS property "border" or "border-color".

```
.border, #border, table{ border:4px solid  
#D9C1CB }
```

If only the border color should be changed use the property `border-color`.

```
.border{ border-color:#D9C1CB }
```

If you want to add a box shadow in that color use:

Here you see how a box with a 4 pixel #D9C1CB colored shadow looks like.

```
.boxshadow{ -moz-box-shadow:4px 4px 4px  
4px #D9C1CB; -webkit-box-shadow:4px 4px  
4px 4px #D9C1CB; box-shadow:4px 4px 4px  
4px #D9C1CB }
```

Background

The CSS property to change the background color of an element to Hex D9C1CB is called "background". The background property can be set on classes, ids or directly on the HTML element.

```
.background, #background, body{  
background:#D9C1CB }
```

If only the background color should be changed can be used:

```
.background{ background-color:#D9C1CB }
```

This example shows the color as background, it is applied via the CSS property "background".

To optimize and compress your CSS code, you can use our [online CSS compressor and optimizer](#) based on csstidy. If you want to create a linear or radial gradient as background or border, check our [CSS Gradient Generator](#).

Hey! You found this booklet interesting? Support Converting Colors with the new Membership Option!

The pro membership hides all ads, plus gives you double the colors in the color bucket, and more awesome pro features!

[Learn more, Memberships starting at \\$2.50/m!](#)

**Follow me
on Twitter!**

@ConvertingColor