

Converting Colors

Hex(D9C2BB)

Have a look what the booklet for
Hex(D9C2BB) contains.

Hex(D9C2BB)	3
<i>Conversions</i>	4
<i>Details</i>	6
<i>Harmonies</i>	11
<i>Previews</i>	23
<i>Color Blindness Simulation</i>	26
<i>CSS Examples</i>	29

Color

Hex(D9C2BB)

Conversions

Conversions Part 1

Format	Color
Hex	D9C2BB
RGB	217, 194, 187
RGB Percent	85%, 76%, 73%
CMY	0.1490, 0.2392, 0.2667
CMYK	0.00, 0.11, 0.14, 0.15
HSL	14°, 28%, 79%
HSV	14°, 14%, 85%
XYZ	56.8767, 56.9231, 55.0032
YIQ	200.0790, 15.9550, 2.6990

Conversions

Conversions Part 2

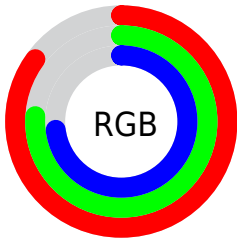
Format	Color
R _Y B	217, 196, 187
Decimal	14271163
CIE Lab	80.14, 6.96, 6.47
CIE LCh	80, 9.503, 42.895
Yxy	56.9231, 0.3369, 0.3372
Android (android.graphics.Color)	4292461243 (0xFFD9C2BB)
YUV	200.0790, -6.4479, 14.8397
Hunter-Lab	75.4474, 2.5308, 9.5892

Details

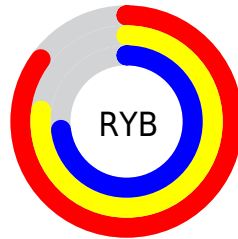
The Hex color **D9C2BB** is a light color, and the websafe version is hex **CCCCCC**. A complement of this color would be **BBD2D9**, and the grayscale version is **C8C8C8**.

A 20% lighter version of the original color is **FFFAF3**, and **A28C86** is the 20% darker color. If you saturate the color by 10%, you get **D9B1A5**, and if you desaturate by 10%, it is **D9D3D1**.

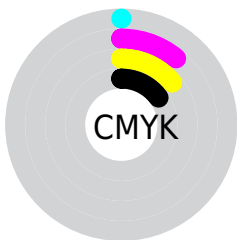
Distribution



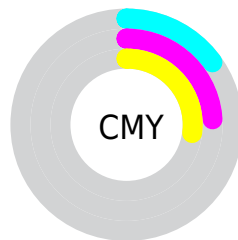
- Red (85%)
- Green (76%)
- Blue (73%)



- Red (85%)
- Yellow (77%)
- Blue (73%)



- Cyan (0%)
- Magenta (11%)
- Yellow (14%)
- Black (15%)



- Cyan (15%)
- Magenta (24%)
- Yellow (27%)

Brightness & Saturation Gradients

These gradients show how the Hex color D9C2BB changes by changing the brightness by 10 percent. The first figure shows a shift by +10% for each color and the second figure -10%.

Similar to the brightness gradients but the following saturation gradients show a change of the Hex color D9C2BB by changing the saturation by 10% instead.

 D9C2BB

 D9C2BB

FFFFFF

 BDA7A0

 FFFAF3

 A28C86

 88736D

 6E5A54

 55433D

 3E2D27

 281813

 110000

 000000

 D9C2BB

 D9C2BB

 D9B1A5

 D9D3D1

 D9A190

 D9E3E6

 D9907A

 D9F4FC

 D97F64

 D9FFFF

 D96F4E

 D95E39

 D94E23

 D93D0D

 D93300

Harmonies

Analogous

The Analogous color harmony consists of three colors that are next to each other on the color wheel.



DAC1C3



D9C2BB



D3C4B6

Triad

The Triadic color harmony groups three colors that are evenly spaced from another and form a triangle on the color wheel.



D9C2BB



B7CCC1



C2C6D8

Complementary

The Complementary color scheme is a pair of colors which are on the opposite of each other on the color wheel.



D9C2BB



BBD2D9

Split Complementary

Split-complementary colors differ from the complementary color scheme. The scheme consists of three colors, the original color and two neighbors of the complement color.



B8C9D7



D9C2BB



B1CCCA

Square

The Square scheme is like the rectangle color scheme, but the four colors are evenly spaced on the color wheel.



D9C2BB



C0CABA



B2CBD2



CDC3D4

Rectangle

The Rectangle color scheme consists of four colors that form a rectangle on the color wheel.



D9C2BB



CDC6B5



B2CBD2



BFC7D8

Sweetspot

The Sweet Spot groups the original color and five complimentary colors.



D9C2BB



FFF7F5



D9BBD2



807B79



000000



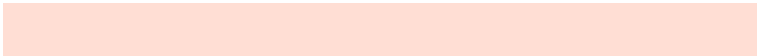
808080

Same Dimension

The Same Dimension uses a secret algorithm to generate beautiful new colors.



D9C2BB



FFDED4



D9D1BB



6E6563



AD2800



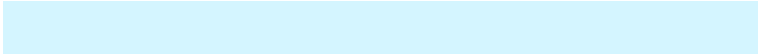
2E0B00

Inverse Universe

The Inverse Universe completely reimagines the original color for something new.



BBD2D9



D4F5FF



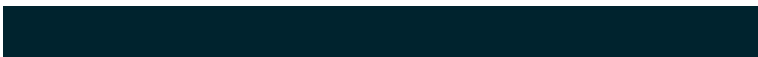
BBC3D9



636B6E



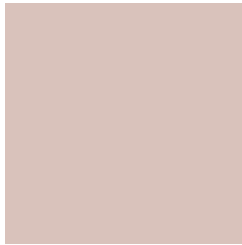
0085AD



00232E

Previews

White Background



This preview shows how the Hex color D9C2BB looks on a white background.

Color Contrast Check

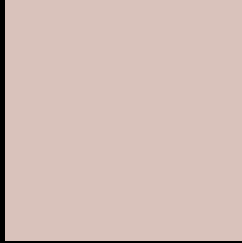
Large Text (above 18pt) WCAG AA × Fail

Any Text WCAG AA × Fail

Large Text (above 18pt) WCAG AAA × Fail

Any Text WCAG AAA × Fail

Black Background



This preview shows how the Hex color D9C2BB looks on a black background.

Color Contrast Check

Large Text (above 18pt) WCAG AA ✓ Pass

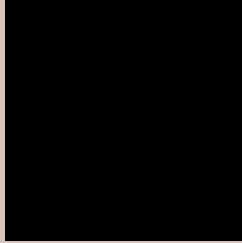
Any Text WCAG AA ✓ Pass

Large Text (above 18pt) WCAG AAA ✓ Pass

Any Text WCAG AAA ✓ Pass

If you want to check with other color combinations, try the [Color Contrast Checker](#).

Hex D9C2BB Background



This preview shows how black text looks on a background with the Hex color D9C2BB.

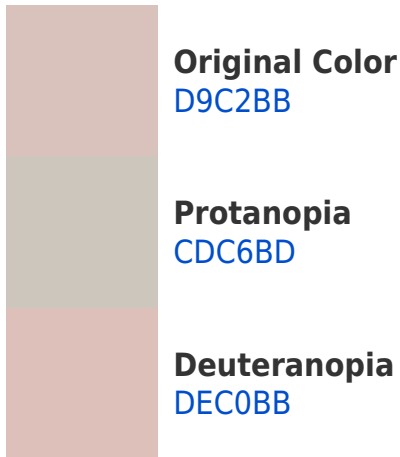


This preview shows how white text looks on a background with the Hex color D9C2BB.

Color Blindness Simulation

Color vision deficiency is a very complex topic, and I could not describe the different causes any better than Wikipedia does, so if you want to learn more, you should check out their [article about color blindness](#).

Dichromacy



Trichromacy



Original Color
D9C2BB

Protanomaly
D1C5BC

Deuteranomaly
DCC1BB

Tritanomaly
DBC0C7

Monochromacy



Original Color
D9C2BB

Achromatopsia
C8C8C8

Achromatomaly
CEC6C3

CSS Examples

Text

The CSS property to change the color of the text to Hex D9C2BB is called "color". The color property can be set on classes, ids or directly on the HTML element.

This example shows how text in the color #D9C2BB looks like.

```
.text, #text, p{  
    color:#D9C2BB  
}
```

If you want to add a text shadow in that color use the text-shadow property, you can generate a text shadow directly with our [CSS Text Shadow Generator](#).

Here you see how black text with a 4 pixel #D9C2BB colored shadow looks like.

```
.shadow{ text-shadow: 4px 4px 2px #D9C2BB  
}
```

Border

The CSS property to change the border of an element to Hex D9C2BB is called "border". The border property can be set on classes, ids or directly on the HTML element.

This example shows the color as border, it can be applied via the CSS property "border" or "border-color".

```
.border, #border, table{ border:4px solid  
#D9C2BB }
```

If only the border color should be changed use the property border-color.

```
.border{ border-color:#D9C2BB }
```

If you want to add a box shadow in that color use:

Here you see how a box with a 4 pixel #D9C2BB colored shadow looks like.

```
.boxshadow{ -moz-box-shadow:4px 4px 4px  
4px #D9C2BB; -webkit-box-shadow:4px 4px  
4px 4px #D9C2BB; box-shadow:4px 4px 4px  
4px #D9C2BB }
```

Background

The CSS property to change the background color of an element to Hex D9C2BB is called "background". The background property can be set on classes, ids or directly on the HTML element.

```
.background, #background, body{  
background:#D9C2BB }
```

If only the background color should be changed can be used:

```
.background{ background-color:#D9C2BB }
```

This example shows the color as background, it is applied via the CSS property "background".

To optimize and compress your CSS code, you can use our [online CSS compressor and optimizer](#) based on csstidy. If you want to create a linear or radial gradient as background or border, check our [CSS Gradient Generator](#).

Hey! You found this booklet interesting? Support Converting Colors with the new Membership Option!

The pro membership hides all ads, plus gives you double the colors in the color bucket, and more awesome pro features!

[Learn more, Memberships starting at \\$2.50/m!](#)

**Follow me
on Twitter!**

@ConvertingColor