

Converting Colors

Hex(D9C3C4)

Have a look what the booklet for
Hex(D9C3C4) contains.

Hex(D9C3C4)	3
<i>Conversions</i>	4
<i>Details</i>	6
<i>Harmonies</i>	11
<i>Previews</i>	23
<i>Color Blindness Simulation</i>	26
<i>CSS Examples</i>	29

Color

Hex(D9C3C4)

Conversions

Conversions Part 1

Format	Color
Hex	D9C3C4
RGB	217, 195, 196
RGB Percent	85%, 76%, 77%
CMY	0.1490, 0.2353, 0.2314
CMYK	0.00, 0.10, 0.10, 0.15
HSL	357°, 22%, 81%
HSV	357°, 10%, 85%
XYZ	58.0942, 57.7674, 60.3129
YIQ	201.6920, 12.7910, 4.9750

Conversions

Conversions Part 2

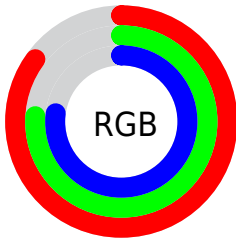
Format	Color
RYB	217, 195, 196
Decimal	14271428
CIELab	80.61, 7.91, 2.31
CIElCh	81, 8.240, 16.315
Yxy	57.7674, 0.3298, 0.3279
Android (android.graphics.Color)	4292461508 (0xFFD9C3C4)
YUV	201.6920, -2.8062, 13.4251
Hunter-Lab	76.0049, 3.4275, 6.1545

Details

The Hex color **D9C3C4** is a light color, and the websafe version is hex **CCCCCC**. A complement of this color would be **C3D9D8**, and the grayscale version is **CACACA**.

A 20% lighter version of the original color is **FFFCFD**, and **A28D8E** is the 20% darker color. If you saturate the color by 10%, you get **D9ADAF**, and if you desaturate by 10%, it is **D9D9D9**.

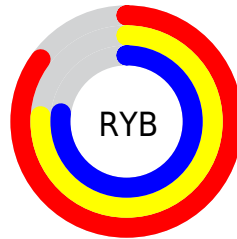
Distribution



Red (85%)

Green (76%)

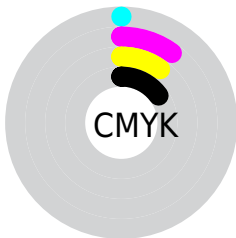
Blue (77%)



Red (85%)

Yellow (76%)

Blue (77%)

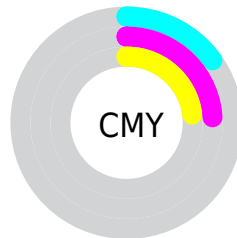


Cyan (0%)

Magenta (10%)

Yellow (10%)

Black (15%)



Cyan (15%)

Magenta (24%)

Yellow (23%)

Brightness & Saturation Gradients

These gradients show how the Hex color D9C3C4 changes by changing the brightness by 10 percent. The first figure shows a shift by +10% for each color and the second figure -10%.

Similar to the brightness gradients but the following saturation gradients show a change of the Hex color D9C3C4 by changing the saturation by 10% instead.

 D9C3C4

 D9C3C4

FFFFFF

 BDA8A9

 FFFCFD

 A28D8E

 887475

 6E5B5C

 564445

 3E2D2E

 28191A

 150000

 000000

 D9C3C4

 D9C3C4

 D9ADAF

 D9D9D9

 D9989B

 D9EEED

 D98286

 D9FFFF

 D96C71

 D9565C

 D94148

 D92B33

 D9151E

 D9000A

Harmonies

Analogous

The Analogous color harmony consists of three colors that are next to each other on the color wheel.



D6C3CC



D9C3C4



D8C4BD

Triad

The Triadic color harmony groups three colors that are evenly spaced from another and form a triangle on the color wheel.



D9C3C4



C1CBBD



BCCAD7

Complementary

The Complementary color scheme is a pair of colors which are on the opposite of each other on the color wheel.



D9C3C4



C3D9D8

Split Complementary

Split-complementary colors differ from the complementary color scheme. The scheme consists of three colors, the original color and two neighbors of the complement color.



B7CCD3



D9C3C4



B9CCC4

Square

The Square scheme is like the rectangle color scheme, but the four colors are evenly spaced on the color wheel.



D9C3C4



CAC9B9



B6CDCC



C5C7D7

Rectangle

The Rectangle color scheme consists of four colors that form a rectangle on the color wheel.



D9C3C4



D4C6BA



B6CDCC



BACBD6

Sweetspot

The Sweet Spot groups the original color and five complimentary colors.



D9C3C4



FFF7F8



D8C3D9



807A7B



000000



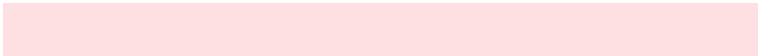
808080

Same Dimension

The Same Dimension uses a secret algorithm to generate beautiful new colors.



D9C3C4



FFE0E2



D9CDC3



6E6363



AD0008



2E0002

Inverse Universe

The Inverse Universe completely reimagines the original color for something new.



D9C3C4



FFE0E2



C3CFD9



6E6363



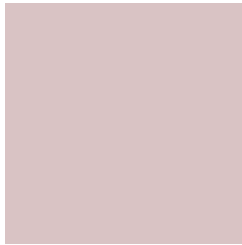
AD0008



2E0002

Previews

White Background



This preview shows how the Hex color D9C3C4 looks on a white background.

Color Contrast Check

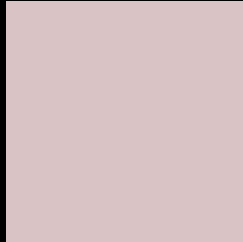
Large Text (above 18pt) WCAG AA × Fail

Any Text WCAG AA × Fail

Large Text (above 18pt) WCAG AAA × Fail

Any Text WCAG AAA × Fail

Black Background



This preview shows how the Hex color D9C3C4 looks on a black background.

Color Contrast Check

Large Text (above 18pt) WCAG AA ✓ Pass

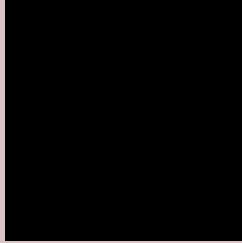
Any Text WCAG AA ✓ Pass

Large Text (above 18pt) WCAG AAA ✓ Pass

Any Text WCAG AAA ✓ Pass

If you want to check with other color combinations, try the [Color Contrast Checker](#).

Hex D9C3C4 Background



This preview shows how black text looks on a background with the Hex color D9C3C4.

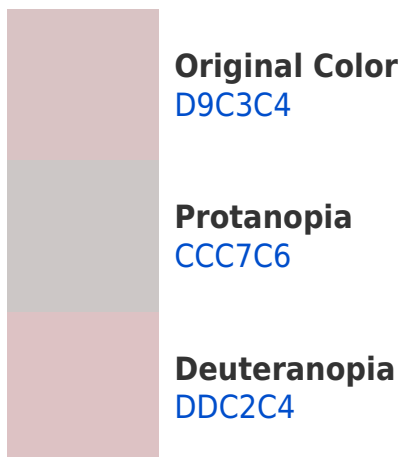


This preview shows how white text looks on a background with the Hex color D9C3C4.

Color Blindness Simulation

Color vision deficiency is a very complex topic, and I could not describe the different causes any better than Wikipedia does, so if you want to learn more, you should check out their [article about color blindness](#).

Dichromacy





Tritanopia
DBC1D0

Trichromacy



Original Color
D9C3C4

Protanomaly
D1C6C5

Deuteranomaly
DCC2C4

Tritanomaly
DAC2CC

Monochromacy



Original Color
D9C3C4

Achromatopsia
CACACA

Achromatomaly
CFC7C8

CSS Examples

Text

The CSS property to change the color of the text to Hex D9C3C4 is called "color". The color property can be set on classes, ids or directly on the HTML element.

This example shows how text in the color #D9C3C4 looks like.

```
.text, #text, p{  
    color:#D9C3C4  
}
```

If you want to add a text shadow in that color use the text-shadow property, you can generate a text shadow directly with our [CSS Text Shadow Generator](#).

Here you see how black text with a 4 pixel #D9C3C4 colored shadow looks like.

```
.shadow{ text-shadow: 4px 4px 2px #D9C3C4
}
```

Border

The CSS property to change the border of an element to Hex D9C3C4 is called "border". The border property can be set on classes, ids or directly on the HTML element.

This example shows the color as border, it can be applied via the CSS property "border" or "border-color".

```
.border, #border, table{ border:4px solid
#D9C3C4 }
```

If only the border color should be changed use the property `border-color`.

```
.border{ border-color:#D9C3C4 }
```

If you want to add a box shadow in that color use:

Here you see how a box with a 4 pixel #D9C3C4 colored shadow looks like.

```
.boxshadow{ -moz-box-shadow:4px 4px 4px  
4px #D9C3C4; -webkit-box-shadow:4px 4px  
4px 4px #D9C3C4; box-shadow:4px 4px 4px  
4px #D9C3C4 }
```

Background

The CSS property to change the background color of an element to Hex D9C3C4 is called "background". The background property can be set on classes, ids or directly on the HTML element.

```
.background, #background, body{  
background:#D9C3C4 }
```

If only the background color should be changed can be used:

```
.background{ background-color:#D9C3C4 }
```

This example shows the color as background, it is applied via the CSS property "background".

To optimize and compress your CSS code, you can use our [online CSS compressor and optimizer](#) based on csstidy. If you want to create a linear or radial gradient as background or border, check our [CSS Gradient Generator](#).

Hey! You found this booklet interesting? Support Converting Colors with the new Membership Option!

The pro membership hides all ads, plus gives you double the colors in the color bucket, and more awesome pro features!

[Learn more, Memberships starting at \\$2.50/m!](#)

**Follow me
on Twitter!**

@ConvertingColor