

# Converting Colors

Hex(D9C4C3)

Have a look what the booklet for  
Hex(D9C4C3) contains.

<b>Hex(D9C4C3)</b> .....	3
<i><b>Conversions</b></i> .....	4
<i><b>Details</b></i> .....	6
<i><b>Harmonies</b></i> .....	11
<i><b>Previews</b></i> .....	23
<i><b>Color Blindness Simulation</b></i> .....	26
<i><b>CSS Examples</b></i> .....	29

# **Color**

**Hex(D9C4C3)**

# Conversions

## Conversions Part 1

Format	Color
Hex	D9C4C3
RGB	217, 196, 195
RGB Percent	85%, 77%, 76%
CMY	0.1490, 0.2314, 0.2353
CMYK	0.00, 0.10, 0.10, 0.15
HSL	3°, 22%, 81%
HSV	3°, 10%, 85%
XYZ	58.2055, 58.1717, 59.7903
YIQ	202.1650, 12.8370, 4.1410

# Conversions

## Conversions Part 2

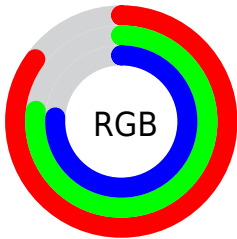
Format	Color
R <sub>Y</sub> B	217, 196, 195
Decimal	14271683
CIE Lab	80.83, 7.21, 3.18
CIE LCh	81, 7.879, 23.788
Yxy	58.1717, 0.3304, 0.3302
Android (android.graphics.Color)	4292461763 (0xFFD9C4C3)
YUV	202.1650, -3.5323, 13.0103
Hunter-Lab	76.2704, 2.7486, 6.9103

# Details

The Hex color **D9C4C3** is a light color, and the websafe version is hex **CCCCCC**. A complement of this color would be **C3D8D9**, and the grayscale version is **CACACA**.

A 20% lighter version of the original color is **FFFDFC**, and **A28E8D** is the 20% darker color. If you saturate the color by 10%, you get **D9AFAD**, and if you desaturate by 10%, it is **D9D9D9**.

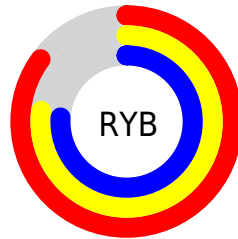
# Distribution



Red (85%)

Green (77%)

Blue (76%)



Red (85%)

Yellow (77%)

Blue (76%)

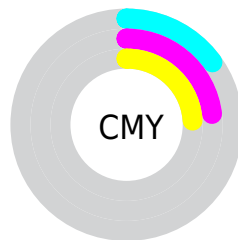


Cyan (0%)

Magenta (10%)

Yellow (10%)

Black (15%)



Cyan (15%)

Magenta (23%)

Yellow (24%)

# Brightness & Saturation Gradients

These gradients show how the Hex color D9C4C3 changes by changing the brightness by 10 percent. The first figure shows a shift by +10% for each color and the second figure -10%.

Similar to the brightness gradients but the following saturation gradients show a change of the Hex color D9C4C3 by changing the saturation by 10% instead.



 D9C4C3

FFFFFF

 FFFDFC

 D9C4C3

 BDA9A8

 A28E8D

 887574

 6E5C5B

 564544

 3E2E2E

 281919

 140000

 000000

 D9C4C3

 D9C4C3

 D9AFAD

 D9D9D9

 D99B98

 D9EDEE

 D98682

 D9FFFF

 D9716C

 D95C56

 D94841

 D9332B

 D91E15

 D90A00

# Harmonies

## Analogous

The Analogous color harmony consists of three colors that are next to each other on the color wheel.



D7C4CA



D9C4C3



D7C5BD

# Triad

The Triadic color harmony groups three colors that are evenly spaced from another and form a triangle on the color wheel.



D9C4C3



C0CCC0



C0CAD7

# Complementary

The Complementary color scheme is a pair of colors which are on the opposite of each other on the color wheel.



D9C4C3



C3D8D9

# Split Complementary

Split-complementary colors differ from the complementary color scheme. The scheme consists of three colors, the original color and two neighbors of the complement color.



B9CCD4



D9C4C3



B9CDC7

# Square

The Square scheme is like the rectangle color scheme, but the four colors are evenly spaced on the color wheel.



D9C4C3



C8CABB



B7CDCE



C8C7D6

# Rectangle

The Rectangle color scheme consists of four colors that form a rectangle on the color wheel.



D9C4C3



D3C7BB



B7CDCE



BDCBD7



# Sweetspot

The Sweet Spot groups the original color and five complimentary colors.



D9C4C3



FFF8F7



D9C3D8



807B7A



000000



808080

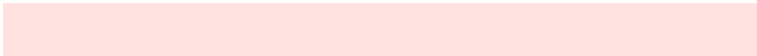


# Same Dimension

The Same Dimension uses a secret algorithm to generate beautiful new colors.



D9C4C3



FFE2E0



D9CFC3



6E6363



AD0800



2E0200



# Inverse Universe

The Inverse Universe completely reimagines the original color for something new.



C3D8D9



E0FEFF



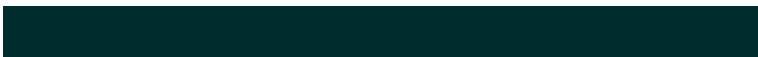
C3CDD9



636D6E



00A6AD

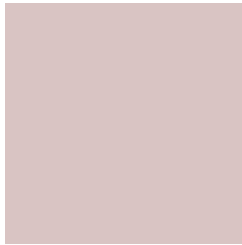


002C2E



# Previews

## White Background



This preview shows how the Hex color D9C4C3 looks on a white background.

## Color Contrast Check

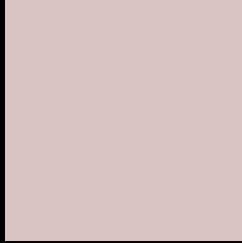
Large Text (above 18pt) WCAG AA × Fail

Any Text WCAG AA × Fail

Large Text (above 18pt) WCAG AAA × Fail

Any Text WCAG AAA × Fail

# Black Background



This preview shows how the Hex color D9C4C3 looks on a black background.

## Color Contrast Check

Large Text (above 18pt) WCAG AA ✓ Pass

Any Text WCAG AA ✓ Pass

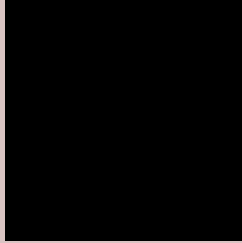
Large Text (above 18pt) WCAG AAA ✓ Pass

Any Text WCAG AAA ✓ Pass

If you want to check with other color combinations, try the [Color Contrast Checker](#).



## Hex D9C4C3 Background



This preview shows how black text looks on a background with the Hex color D9C4C3.



This preview shows how white text looks on a background with the Hex color D9C4C3.

# Color Blindness Simulation

Color vision deficiency is a very complex topic, and I could not describe the different causes any better than Wikipedia does, so if you want to learn more, you should check out their [article about color blindness](#).

## Dichromacy



**Original Color**  
D9C4C3

**Protanopia**  
CDC8C5

**Deuteranopia**  
DEC2C3



**Tritanopia**  
DBC2D1

# Trichromacy



**Original Color**  
D9C4C3

**Protanomaly**  
D1C7C4

**Deuteranomaly**  
DCC3C3

**Tritanomaly**  
DAC3CC

# Monochromacy



**Original Color**  
D9C4C3

**Achromatopsia**  
CACACA

**Achromatomaly**  
CFC8C7

# CSS Examples

## Text

The CSS property to change the color of the text to Hex D9C4C3 is called "color". The color property can be set on classes, ids or directly on the HTML element.

This example shows how text in the color #D9C4C3 looks like.

```
.text, #text, p{  
  color:#D9C4C3  
}
```

If you want to add a text shadow in that color use the text-shadow property, you can generate a text shadow directly with our [CSS Text Shadow Generator](#).

Here you see how black text with a 4 pixel #D9C4C3 colored shadow looks like.

```
.shadow{ text-shadow: 4px 4px 2px #D9C4C3
}
```

## Border

The CSS property to change the border of an element to Hex D9C4C3 is called "border". The border property can be set on classes, ids or directly on the HTML element.

This example shows the color as border, it can be applied via the CSS property "border" or "border-color".

```
.border, #border, table{ border:4px solid
#D9C4C3 }
```

If only the border color should be changed use the property `border-color`.

```
.border{ border-color:#D9C4C3 }
```

If you want to add a box shadow in that color use:

Here you see how a box with a 4 pixel #D9C4C3 colored shadow looks like.

```
.boxshadow{ -moz-box-shadow:4px 4px 4px  
4px #D9C4C3; -webkit-box-shadow:4px 4px  
4px 4px #D9C4C3; box-shadow:4px 4px 4px  
4px #D9C4C3 }
```

# Background

The CSS property to change the background color of an element to Hex D9C4C3 is called "background". The background property can be set on classes, ids or directly on the HTML element.

```
.background, #background, body{  
background:#D9C4C3 }
```

If only the background color should be changed can be used:

```
.background{ background-color:#D9C4C3 }
```

This example shows the color as background, it is applied via the CSS property "background".

To optimize and compress your CSS code, you can use our [online CSS compressor and optimizer](#) based on csstidy. If you want to create a linear or radial gradient as background or border, check our [CSS Gradient Generator](#).



Hey! You found this booklet interesting? Support Converting Colors with the new Membership Option!

The pro membership hides all ads, plus gives you double the colors in the color bucket, and more awesome pro features!

**[Learn more, Memberships starting at \\$2.50/m!](#)**

**Follow me  
on Twitter!**

@ConvertingColor