

Converting Colors

Hex(D9C8C9)

Have a look what the booklet for
Hex(D9C8C9) contains.

Hex(D9C8C9)	3
<i>Conversions</i>	4
<i>Details</i>	6
<i>Harmonies</i>	11
<i>Previews</i>	23
<i>Color Blindness Simulation</i>	26
<i>CSS Examples</i>	29

Color

Hex(D9C8C9)

Conversions

Conversions Part 1

Format	Color
Hex	D9C8C9
RGB	217, 200, 201
RGB Percent	85%, 78%, 79%
CMY	0.1490, 0.2157, 0.2118
CMYK	0.00, 0.08, 0.07, 0.15
HSL	356°, 18%, 82%
HSV	356°, 8%, 85%
XYZ	59.8122, 60.2773, 63.7406
YIQ	205.1970, 9.8110, 3.9150

Conversions

Conversions Part 2

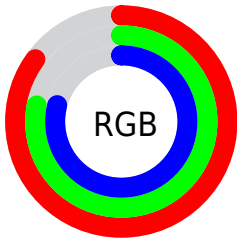
Format	Color
R _Y B	217, 200, 201
Decimal	14272713
CIE Lab	81.99, 6.10, 1.64
CIE LCh	82, 6.321, 15.024
Yxy	60.2773, 0.3254, 0.3279
Android (android.graphics.Color)	4292462793 (0xFFD9C8C9)
YUV	205.1970, -2.0691, 10.3512
Hunter-Lab	77.6385, 1.6479, 5.6703

Details

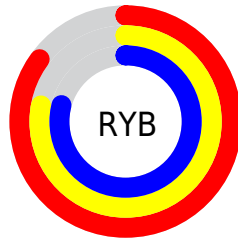
The Hex color **D9C8C9** is a light color, and the websafe version is hex **CCCCCC**. A complement of this color would be **C8D9D8**, and the grayscale version is **CDCDCD**.

A 20% lighter version of the original color is **FFFFFF**, and **A29293** is the 20% darker color. If you saturate the color by 10%, you get **D9B2B5**, and if you desaturate by 10%, it is **D9DEDD**.

Distribution



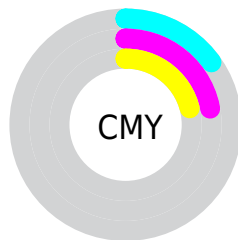
- Red (85%)
- Green (78%)
- Blue (79%)



- Red (85%)
- Yellow (78%)
- Blue (79%)



- Cyan (0%)
- Magenta (8%)
- Yellow (7%)
- Black (15%)



- Cyan (15%)
- Magenta (22%)
- Yellow (21%)

Brightness & Saturation Gradients

These gradients show how the Hex color D9C8C9 changes by changing the brightness by 10 percent. The first figure shows a shift by +10% for each color and the second figure -10%.

Similar to the brightness gradients but the following saturation gradients show a change of the Hex color D9C8C9 by changing the saturation by 10% instead.

 D9C8C9

FFFFFF

 D9C8C9

 BDADAE

 A29293

 887879

 6E6061

 564849

 3F3132

 291C1D

 150204

 000000

 D9C8C9

 D9C8C9

 D9B2B5

 D9DEDD

 D99DA0

 D9F3F2

 D9878C

 D9FFFF

 D97177

 D95C63

 D9464E

 D9303A

 D91A26

 D90511

Harmonies

Analogous

The Analogous color harmony consists of three colors that are next to each other on the color wheel.



D6C8CF



D9C8C9



D8C9C4

Triad

The Triadic color harmony groups three colors that are evenly spaced from another and form a triangle on the color wheel.



D9C8C9



C7CEC3



C3CDD7

Complementary

The Complementary color scheme is a pair of colors which are on the opposite of each other on the color wheel.



D9C8C9



C8D9D8

Split Complementary

Split-complementary colors differ from the complementary color scheme. The scheme consists of three colors, the original color and two neighbors of the complement color.



BECFD4



D9C8C9



C1CFC9

Square

The Square scheme is like the rectangle color scheme, but the four colors are evenly spaced on the color wheel.



D9C8C9



CECC00



BECFCF



CACBD7

Rectangle

The Rectangle color scheme consists of four colors that form a rectangle on the color wheel.



D9C8C9



D6CAC1



BECFCF



C1CED6

Sweetspot

The Sweet Spot groups the original color and five complimentary colors.



D9C8C9



FFFAFA



D8C8D9



807D7D



000000



808080

Same Dimension

The Same Dimension uses a secret algorithm to generate beautiful new colors.



D9C8C9



FFE8E9



D9CFC8



6E6363



AD000A



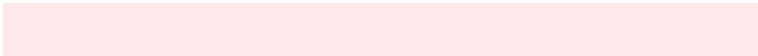
2E0003

Inverse Universe

The Inverse Universe completely reimagines the original color for something new.



D9C8C9



FFE8E9



C8D2D9



6E6363



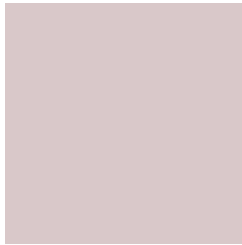
AD000A



2E0003

Previews

White Background



This preview shows how the Hex color D9C8C9 looks on a white background.

Color Contrast Check

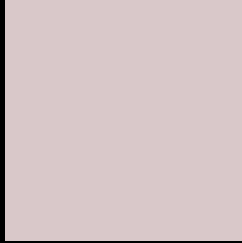
Large Text (above 18pt) WCAG AA × Fail

Any Text WCAG AA × Fail

Large Text (above 18pt) WCAG AAA × Fail

Any Text WCAG AAA × Fail

Black Background



This preview shows how the Hex color D9C8C9 looks on a black background.

Color Contrast Check

Large Text (above 18pt) WCAG AA ✓ Pass

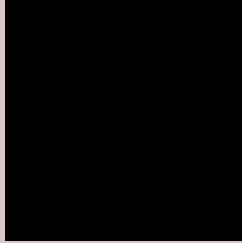
Any Text WCAG AA ✓ Pass

Large Text (above 18pt) WCAG AAA ✓ Pass

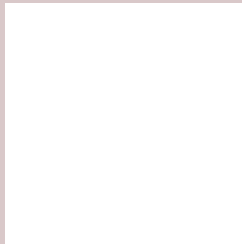
Any Text WCAG AAA ✓ Pass

If you want to check with other color combinations, try the [Color Contrast Checker](#).

Hex D9C8C9 Background



This preview shows how black text looks on a background with the Hex color D9C8C9.



This preview shows how white text looks on a background with the Hex color D9C8C9.

Color Blindness Simulation

Color vision deficiency is a very complex topic, and I could not describe the different causes any better than Wikipedia does, so if you want to learn more, you should check out their [article about color blindness](#).

Dichromacy



Original Color
D9C8C9

Protanopia
D0CBCB

Deuteranopia
E0C5CA



Tritanopia
DBC6D6

Trichromacy



Original Color
D9C8C9

Protanomaly
D3CACA

Deuteranomaly
DDC6CA

Tritanomaly
DAC7D1

Monochromacy



Original Color
D9C8C9

Achromatopsia
CDCDCD

Achromatomaly
D1CBCC

CSS Examples

Text

The CSS property to change the color of the text to Hex D9C8C9 is called "color". The color property can be set on classes, ids or directly on the HTML element.

This example shows how text in the color #D9C8C9 looks like.

```
.text, #text, p{  
    color:#D9C8C9  
}
```

If you want to add a text shadow in that color use the text-shadow property, you can generate a text shadow directly with our [CSS Text Shadow Generator](#).

Here you see how black text with a 4 pixel #D9C8C9 colored shadow looks like.

```
.shadow{ text-shadow: 4px 4px 2px #D9C8C9
}
```

Border

The CSS property to change the border of an element to Hex D9C8C9 is called "border". The border property can be set on classes, ids or directly on the HTML element.

This example shows the color as border, it can be applied via the CSS property "border" or "border-color".

```
.border, #border, table{ border:4px solid
#D9C8C9 }
```

If only the border color should be changed use the property `border-color`.

```
.border{ border-color:#D9C8C9 }
```

If you want to add a box shadow in that color use:

Here you see how a box with a 4 pixel #D9C8C9 colored shadow looks like.

```
.boxshadow{ -moz-box-shadow:4px 4px 4px  
4px #D9C8C9; -webkit-box-shadow:4px 4px  
4px 4px #D9C8C9; box-shadow:4px 4px 4px  
4px #D9C8C9 }
```

Background

The CSS property to change the background color of an element to Hex D9C8C9 is called "background". The background property can be set on classes, ids or directly on the HTML element.

```
.background, #background, body{  
background:#D9C8C9 }
```

If only the background color should be changed can be used:

```
.background{ background-color:#D9C8C9 }
```

This example shows the color as background, it is applied via the CSS property "background".

To optimize and compress your CSS code, you can use our [online CSS compressor and optimizer](#) based on csstidy. If you want to create a linear or radial gradient as background or border, check our [CSS Gradient Generator](#).

Hey! You found this booklet interesting? Support Converting Colors with the new Membership Option!

The pro membership hides all ads, plus gives you double the colors in the color bucket, and more awesome pro features!

[Learn more, Memberships starting at \\$2.50/m!](#)

**Follow me
on Twitter!**

@ConvertingColor