

# Converting Colors

Hex(DA406A)

Have a look what the booklet for  
Hex(DA406A) contains.

<b>Hex(DA406A)</b> .....	3
<b><i>Conversions</i></b> .....	4
<b><i>Details</i></b> .....	6
<b><i>Harmonies</i></b> .....	11
<b><i>Previews</i></b> .....	23
<b><i>Color Blindness Simulation</i></b> .....	26
<b><i>CSS Examples</i></b> .....	29

**Color**

**Hex(DA406A)**

# Conversions

## Conversions Part 1

<b>Format</b>	<b>Color</b>
Hex	DA406A
RGB	218, 64, 106
RGB Percent	85%, 25%, 42%
CMY	0.1451, 0.7490, 0.5843
CMYK	0.00, 0.71, 0.51, 0.15
HSL	344°, 68%, 55%
HSV	344°, 71%, 85%
XYZ	33.3484, 19.6128, 15.6637
YIQ	114.8340, 78.3020, 45.7100

# Conversions

## Conversions Part 2

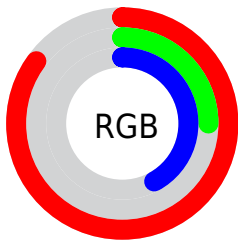
<b>Format</b>	<b>Color</b>
<b>R<sub>YB</sub></b>	218, 64, 106
Decimal	14303338
CIE <sub>Lab</sub>	51.40, 62.15, 11.41
CIE <sub>LCh</sub>	51, 63.189, 10.399
Yxy	19.6128, 0.4860, 0.2858
Android (android.graphics.Color)	4292493418 (0xFFDA406A)
YUV	114.8340, -4.3552, 90.4766
Hunter-Lab	44.2864, 56.9123, 10.0301

# Details

The Hex color **DA406A** is a dark color, and the websafe version is hex **CC3366**. The color can be described as dark muted rose. A complement of this color would be **40DAB0**, and the grayscale version is **737373**.

A 20% lighter version of the original color is **FF7A9D**, and **9D003B** is the 20% darker color. If you saturate the color by 10%, you get **DA2A5A**, and if you desaturate by 10%, it is **DA567A**.

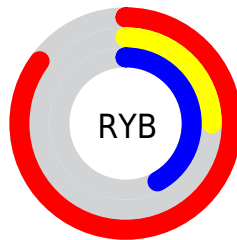
# Distribution



Red (85%)

Green (25%)

Blue (42%)



Red (85%)

Yellow (25%)

Blue (42%)

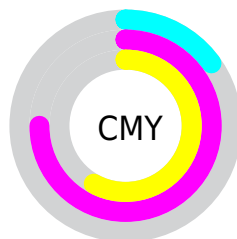


Cyan (0%)

Magenta (71%)

Yellow (51%)

Black (15%)



Cyan (15%)

Magenta (75%)

Yellow (58%)

# Brightness & Saturation Gradients

These gradients show how the Hex color DA406A changes by changing the brightness by 10 percent. The first figure shows a shift by +10% for each color and the second figure -10%.

Similar to the brightness gradients but the following saturation gradients show a change of the Hex color DA406A by changing the saturation by 10% instead.



 DA406A

 DA406A

FFFFFF

 BB1D52

 FF7A9D

 9D003B

 FF96B8

 7F0026

 FFB3D3

 620012

 FFD0F0

 460003

 FFE0FF

 260001

 000000

 DA406A

 DA406A

 DA2A5A

 DA567A

 DA144A

 DA6C8A

 DA003B

 DA819A

 DA97A9

 DAADB9

 DAC3C9

 DAD9D9

 DAEEE9

 DAFFF9

# Harmonies

## Analogous

The Analogous color harmony consists of three colors that are next to each other on the color wheel.



C849A0



DA406A



CF5237

# Triad

The Triadic color harmony groups three colors that are evenly spaced from another and form a triangle on the color wheel.



DA406A



458A1D



008AE0

# Complementary

The Complementary color scheme is a pair of colors which are on the opposite of each other on the color wheel.



DA406A



40DAB0

# Split Complementary

Split-complementary colors differ from the complementary color scheme. The scheme consists of three colors, the original color and two neighbors of the complement color.



0091C0



DA406A



009154

# Square

The Square scheme is like the rectangle color scheme, but the four colors are evenly spaced on the color wheel.



DA406A



827E00



00938C



007BE6

# Rectangle

The Rectangle color scheme consists of four colors that form a rectangle on the color wheel.



DA406A



BC6314



00938C



008DD8



# Sweetspot

The Sweet Spot groups the original color and five complimentary colors.



DA406A



FFC9D8



AE40DA



806068



000000



808080



# Same Dimension

The Same Dimension uses a secret algorithm to generate beautiful new colors.



DA406A



FF2661



DA6140



6E6366



AD002F



2E000D



# Inverse Universe

The Inverse Universe completely reimagines the original color for something new.



DA406A



FF2661



40B9DA



6E6366



AD002F

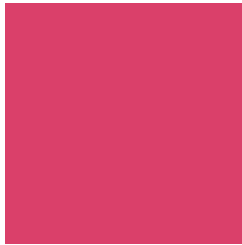


2E000D



# Previews

## White Background



This preview shows how the Hex color DA406A looks on a white background.

## Color Contrast Check

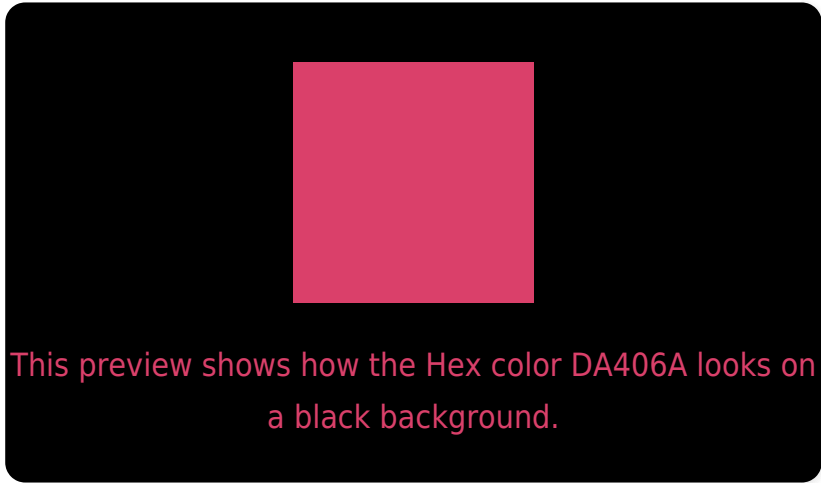
Large Text (above 18pt) WCAG AA ✓ Pass

Any Text WCAG AA × Fail

Large Text (above 18pt) WCAG AAA × Fail

Any Text WCAG AAA × Fail

# Black Background



## Color Contrast Check

Large Text (above 18pt) WCAG AA ✓ Pass

Any Text WCAG AA ✓ Pass

Large Text (above 18pt) WCAG AAA ✓ Pass

Any Text WCAG AAA × Fail

If you want to check with other color combinations, try the [Color Contrast Checker](#).



## Hex DA406A Background



This preview shows how black text looks on a background with the Hex color DA406A.

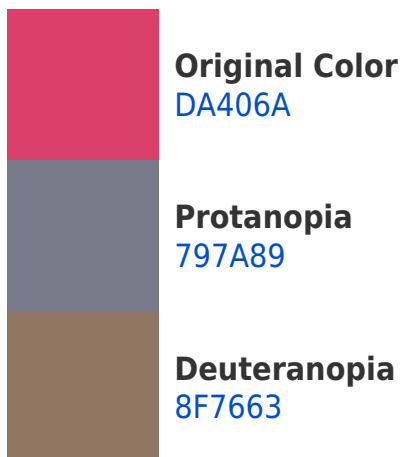



This preview shows how white text looks on a background with the Hex color DA406A.

# Color Blindness Simulation

Color vision deficiency is a very complex topic, and I could not describe the different causes any better than Wikipedia does, so if you want to learn more, you should check out their [article about color blindness](#).

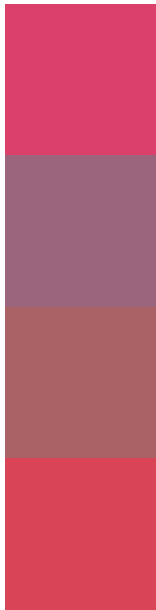
## Dichromacy





**Tritanopia**  
D8474B

# Trichromacy



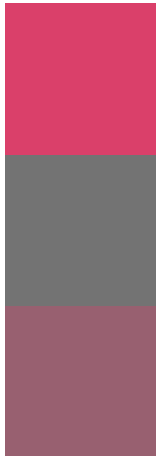
**Original Color**  
DA406A

**Protanomaly**  
9C657E

**Deuteranomaly**  
AA6266

**Tritanomaly**  
D94456

# Monochromacy



**Original Color**  
DA406A

**Achromatopsia**  
737373

**Achromatomaly**  
986070

# CSS Examples

## Text

The CSS property to change the color of the text to Hex DA406A is called "color". The color property can be set on classes, ids or directly on the HTML element.

This example shows how text in the color #DA406A looks like.

```
.text, #text, p{  
    color:#DA406A  
}
```

If you want to add a text shadow in that color use the text-shadow property, you can generate a text shadow directly with our [CSS Text Shadow Generator](#).

Here you see how black text with a 4 pixel #DA406A colored shadow looks like.

```
.shadow{ text-shadow: 4px 4px 2px #DA406A
}
```

## Border

The CSS property to change the border of an element to Hex DA406A is called "border". The border property can be set on classes, ids or directly on the HTML element.

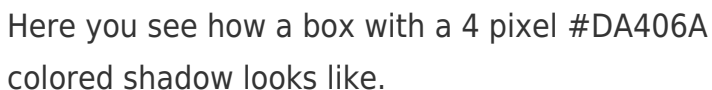
This example shows the color as border, it can be applied via the CSS property "border" or "border-color".

```
.border, #border, table{ border:4px solid
#DA406A }
```

If only the border color should be changed use the property `border-color`.

```
.border{ border-color:#DA406A }
```

If you want to add a box shadow in that color use:



Here you see how a box with a 4 pixel `#DA406A` colored shadow looks like.

```
.boxshadow{ -moz-box-shadow:4px 4px 4px  
4px #DA406A; -webkit-box-shadow:4px 4px  
4px 4px #DA406A; box-shadow:4px 4px 4px  
4px #DA406A }
```

# Background

The CSS property to change the background color of an element to Hex DA406A is called "background". The background property can be set on classes, ids or directly on the HTML element.

```
.background, #background, body{  
background:#DA406A }
```

If only the background color should be changed can be used:

```
.background{ background-color:#DA406A }
```

This example shows the color as background, it is applied via the CSS property "background".

To optimize and compress your CSS code, you can use our [online CSS compressor and optimizer](#) based on csstidy. If you want to create a linear or radial gradient as background or border, check our [CSS Gradient Generator](#).



Hey! You found this booklet interesting? Support Converting Colors with the new Membership Option!

The pro membership hides all ads, plus gives you double the colors in the color bucket, and more awesome pro features!

**[Learn more, Memberships starting at \\$2.50/m!](#)**

**Follow me  
on Twitter!**

@ConvertingColor