

Converting Colors

Hex(DA4378)

Have a look what the booklet for
Hex(DA4378) contains.

Hex(DA4378)	3
<i>Conversions</i>	4
<i>Details</i>	6
<i>Harmonies</i>	11
<i>Previews</i>	23
<i>Color Blindness Simulation</i>	26
<i>CSS Examples</i>	29

Color

Hex(DA4378)

Conversions

Conversions Part 1

Format	Color
Hex	DA4378
RGB	218, 67, 120
RGB Percent	85%, 26%, 47%
CMY	0.1451, 0.7373, 0.5294
CMYK	0.00, 0.69, 0.45, 0.15
HSL	339°, 67%, 56%
HSV	339°, 69%, 85%
XYZ	34.3108, 20.2758, 19.8745
YIQ	118.1910, 72.9830, 48.4950

Conversions

Conversions Part 2

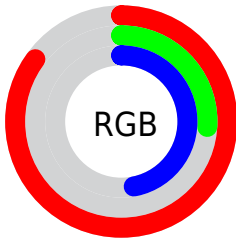
Format	Color
R_{YB}	218, 67, 120
Decimal	14304120
CIE _{Lab}	52.15, 62.27, 4.04
CIE _{LCh}	52, 62.406, 3.716
Yxy	20.2758, 0.4608, 0.2723
Android (android.graphics.Color)	4292494200 (0xFFDA4378)
YUV	118.1910, 0.8918, 87.5325
Hunter-Lab	45.0287, 57.2126, 5.3509

Details

The Hex color **DA4378** is a dark color, and the websafe version is hex **CC3366**. The color can be described as middle muted rose. A complement of this color would be **43DAA5**, and the grayscale version is **767676**.

A 20% lighter version of the original color is **FF7DAC**, and **9E0048** is the 20% darker color. If you saturate the color by 10%, you get **DA2D6A**, and if you desaturate by 10%, it is **DA5986**.

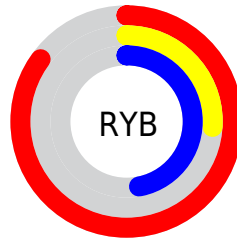
Distribution



Red (85%)

Green (26%)

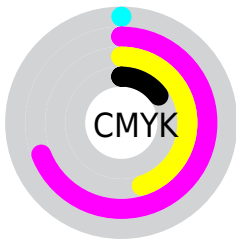
Blue (47%)



Red (85%)

Yellow (26%)

Blue (47%)

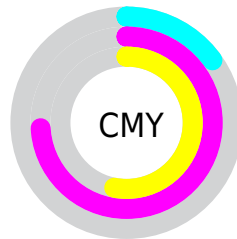


Cyan (0%)

Magenta (69%)

Yellow (45%)

Black (15%)



Cyan (15%)

Magenta (74%)

Yellow (53%)

Brightness & Saturation Gradients

These gradients show how the Hex color DA4378 changes by changing the brightness by 10 percent. The first figure shows a shift by +10% for each color and the second figure -10%.

Similar to the brightness gradients but the following saturation gradients show a change of the Hex color DA4378 by changing the saturation by 10% instead.

 DA4378

 DA4378

FFFFFF

 BC215F

 FF7DAC

 9E0048

 FF99C7

 800032

 FFB6E3

 63001D

 FFD3FF

 480002

 FFF1FF

 290001

 000000

 DA4378

 DA4378

 DA2D6A

 DA5986

 DA175C

 DA6F94

 DA024E

 DA84A2

 DA004D

 DA9AB1

 DAB0BF

 DAC6CD

 DADCDB

 DAF1E9

 DAFFF7

Harmonies

Analogous

The Analogous color harmony consists of three colors that are next to each other on the color wheel.



C151AD



DA4378



D55044

Triad

The Triadic color harmony groups three colors that are evenly spaced from another and form a triangle on the color wheel.



DA4378



588A13



008EDC

Complementary

The Complementary color scheme is a pair of colors which are on the opposite of each other on the color wheel.



DA4378



43DAA5

Split Complementary

Split-complementary colors differ from the complementary color scheme. The scheme consists of three colors, the original color and two neighbors of the complement color.



0094B7



DA4378



00924A

Square

The Square scheme is like the rectangle color scheme, but the four colors are evenly spaced on the color wheel.



DA4378



8F7C00



009582



0081E8

Rectangle

The Rectangle color scheme consists of four colors that form a rectangle on the color wheel.



DA4378



C55F24



009582



0091D2

Sweetspot

The Sweet Spot groups the original color and five complimentary colors.



DA4378



FFC9DC



A343DA



80606B



000000



808080

Same Dimension

The Same Dimension uses a secret algorithm to generate beautiful new colors.



DA4378



FF2B76



DA5743



6E6367



AD003D



2E0010

Inverse Universe

The Inverse Universe completely reimagines the original color for something new.



DA4378



FF2B76



43C6DA



6E6367



AD003D



2E0010

Previews

White Background



This preview shows how the Hex color DA4378 looks on a white background.

Color Contrast Check

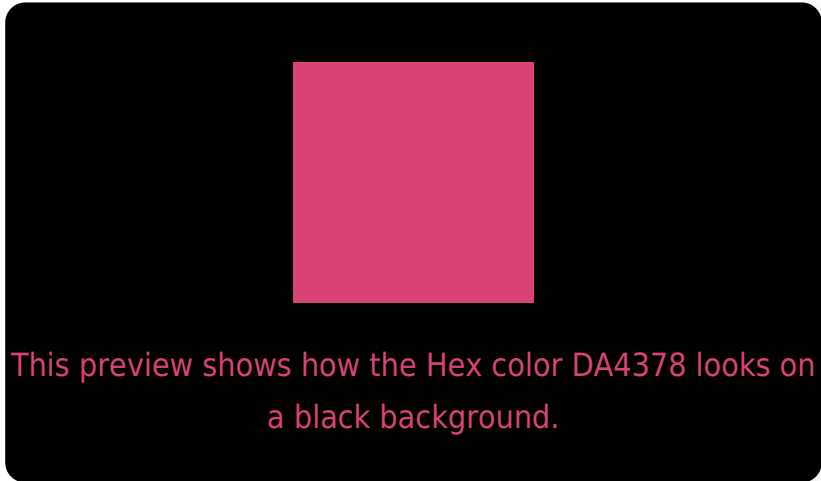
Large Text (above 18pt) WCAG AA ✓ Pass

Any Text WCAG AA × Fail

Large Text (above 18pt) WCAG AAA × Fail

Any Text WCAG AAA × Fail

Black Background



Color Contrast Check

Large Text (above 18pt) WCAG AA ✓ Pass

Any Text WCAG AA ✓ Pass

Large Text (above 18pt) WCAG AAA ✓ Pass

Any Text WCAG AAA × Fail

If you want to check with other color combinations, try the [Color Contrast Checker](#).

Hex DA4378 Background



This preview shows how black text looks on a background with the Hex color DA4378.

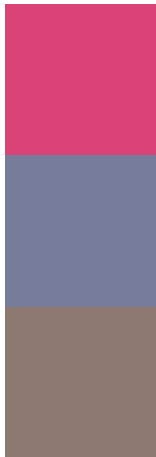


This preview shows how white text looks on a background with the Hex color DA4378.

Color Blindness Simulation

Color vision deficiency is a very complex topic, and I could not describe the different causes any better than Wikipedia does, so if you want to learn more, you should check out their [article about color blindness](#).

Dichromacy



Original Color
DA4378

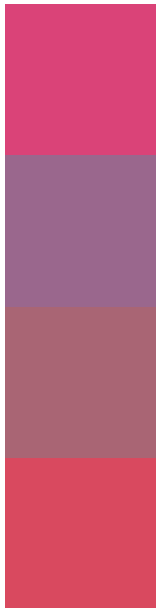
Protanopia
767C99

Deuteranopia
8D7871



Tritanopia
D84C50

Trichromacy



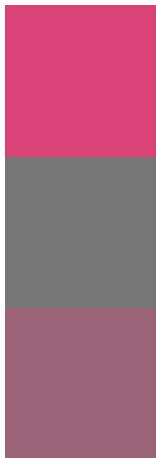
Original Color
DA4378

Protanomaly
9A678D

Deuteranomaly
A96574

Tritanomaly
D9495F

Monochromacy



Original Color
DA4378

Achromatopsia
767676

Achromatomaly
9A6377

CSS Examples

Text

The CSS property to change the color of the text to Hex DA4378 is called "color". The color property can be set on classes, ids or directly on the HTML element.

This example shows how text in the color #DA4378 looks like.

```
.text, #text, p{  
    color:#DA4378  
}
```

If you want to add a text shadow in that color use the text-shadow property, you can generate a text shadow directly with our [CSS Text Shadow Generator](#).

Here you see how black text with a 4 pixel #DA4378 colored shadow looks like.

```
.shadow{ text-shadow: 4px 4px 2px #DA4378
}
```

Border

The CSS property to change the border of an element to Hex DA4378 is called "border". The border property can be set on classes, ids or directly on the HTML element.

This example shows the color as border, it can be applied via the CSS property "border" or "border-color".

```
.border, #border, table{ border:4px solid
#DA4378 }
```

If only the border color should be changed use the property `border-color`.

```
.border{ border-color:#DA4378 }
```

If you want to add a box shadow in that color use:

Here you see how a box with a 4 pixel #DA4378 colored shadow looks like.

```
.boxshadow{ -moz-box-shadow:4px 4px 4px  
4px #DA4378; -webkit-box-shadow:4px 4px  
4px 4px #DA4378; box-shadow:4px 4px 4px  
4px #DA4378 }
```

Background

The CSS property to change the background color of an element to Hex DA4378 is called "background". The background property can be set on classes, ids or directly on the HTML element.

```
.background, #background, body{  
background:#DA4378 }
```

If only the background color should be changed can be used:

```
.background{ background-color:#DA4378 }
```

This example shows the color as background, it is applied via the CSS property "background".

To optimize and compress your CSS code, you can use our [online CSS compressor and optimizer](#) based on csstidy. If you want to create a linear or radial gradient as background or border, check our [CSS Gradient Generator](#).

Hey! You found this booklet interesting? Support Converting Colors with the new Membership Option!

The pro membership hides all ads, plus gives you double the colors in the color bucket, and more awesome pro features!

[Learn more, Memberships starting at \\$2.50/m!](#)

**Follow me
on Twitter!**

@ConvertingColor