

Converting Colors

Hex(DA7357)

Have a look what the booklet for
Hex(DA7357) contains.

| | |
|--|----|
| Hex(DA7357) | 3 |
| <i>Conversions</i> | 4 |
| <i>Details</i> | 6 |
| <i>Harmonies</i> | 11 |
| <i>Previews</i> | 23 |
| <i>Color Blindness Simulation</i> | 26 |
| <i>CSS Examples</i> | 29 |

Color

Hex(DA7357)

Conversions

Conversions Part 1

| Format | Color |
|---------------|----------------------------|
| Hex | DA7357 |
| RGB | 218, 115, 87 |
| RGB Percent | 85%, 45%, 34% |
| CMY | 0.1451, 0.5490, 0.6588 |
| CMYK | 0.00, 0.47, 0.60, 0.15 |
| HSL | 13°, 64%, 60% |
| HSV | 13°, 60%, 85% |
| XYZ | 36.7645, 27.8550, 12.4557 |
| YIQ | 142.6050, 70.3760, 13.1280 |

Conversions

Conversions Part 2

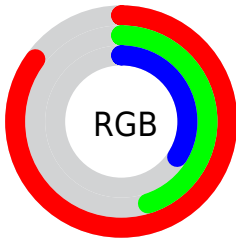
| Format | Color |
|-------------------------------------|--------------------------------|
| R_{YB} | 218, 123, 87 |
| Decimal | 14316375 |
| CIE _{Lab} | 59.76, 37.77, 33.53 |
| CIE _{LCh} | 60, 50.501, 41.599 |
| Yxy | 27.8550, 0.4770, 0.3614 |
| Android (android.graphics.Color) | 4292506455 (0xFFDA7357) |
| YUV | 142.6050, -27.4133, 66.1214 |
| Hunter-Lab | 52.7778, 31.9799, 22.9519 |

Details

The Hex color **DA7357** is a dark color, and the websafe version is hex **CC6633**. The color can be described as middle muted orange. A complement of this color would be **57BEDA**, and the grayscale version is **8F8F8F**.

A 20% lighter version of the original color is **FFA989**, and **9E4029** is the 20% darker color. If you saturate the color by 10%, you get **DA6241**, and if you desaturate by 10%, it is **DA846D**.

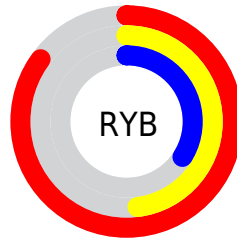
Distribution



Red (85%)

Green (45%)

Blue (34%)



Red (85%)

Yellow (48%)

Blue (34%)

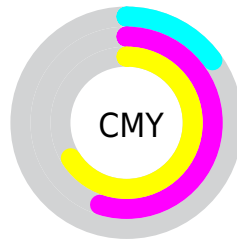


Cyan (0%)

Magenta (47%)

Yellow (60%)

Black (15%)



Cyan (15%)

Magenta (55%)

Yellow (66%)

Brightness & Saturation Gradients

These gradients show how the Hex color DA7357 changes by changing the brightness by 10 percent. The first figure shows a shift by +10% for each color and the second figure -10%.

Similar to the brightness gradients but the following saturation gradients show a change of the Hex color DA7357 by changing the saturation by 10% instead.

 DA7357

 DA7357

FFFFFF

 BC593F

 FFA989

 9E4029

 FFC4A4

 812713

 FFE1BF

 650A00

 FFFEDB

 480000

 FFFFF8

 300002

 000000

 DA7357

 DA7357

 DA6241

 DA846D

 DA512B

 DA9583

 DA4016

 DAA698

 DA2F00

 DAB8AE

 DAC9C4

 DADADA

 DAEBF0

 DAFCFF

 DAFFFF

Harmonies

Analogous

The Analogous color harmony consists of three colors that are next to each other on the color wheel.



E26980



DA7357



BF8439

Triad

The Triadic color harmony groups three colors that are evenly spaced from another and form a triangle on the color wheel.



DA7357



08A472



608FE7

Complementary

The Complementary color scheme is a pair of colors which are on the opposite of each other on the color wheel.



DA7357



57BEDA

Split Complementary

Split-complementary colors differ from the complementary color scheme. The scheme consists of three colors, the original color and two neighbors of the complement color.



009CE4



DA7357



00A6A0

Square

The Square scheme is like the rectangle color scheme, but the four colors are evenly spaced on the color wheel.



DA7357



689E4A



00A4CA



A97DD3

Rectangle

The Rectangle color scheme consists of four colors that form a rectangle on the color wheel.



DA7357



A68E32



00A4CA



3794E9

Sweetspot

The Sweet Spot groups the original color and five complimentary colors.



DA7357



FFDBD1



DA57C0



806963



000000



808080

Same Dimension

The Same Dimension uses a secret algorithm to generate beautiful new colors.



DA7357



FF6F47



DAB357



6E6563



AD2500



2E0A00

Inverse Universe

The Inverse Universe completely reimagines the original color for something new.



57BEDA



47D8FF



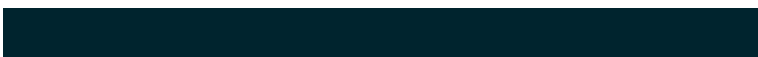
577EDA



636B6E



0088AD



00242E

Previews

White Background



This preview shows how the Hex color DA7357 looks on a white background.

Color Contrast Check

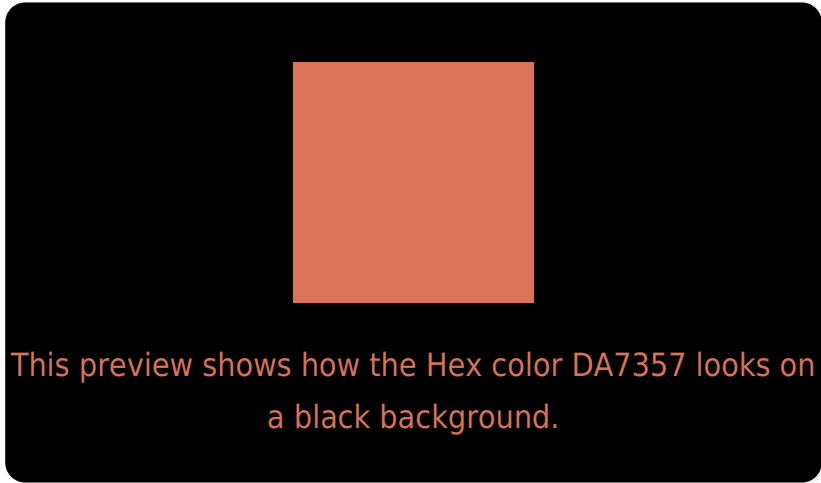
Large Text (above 18pt) WCAG AA ✓ Pass

Any Text WCAG AA × Fail

Large Text (above 18pt) WCAG AAA × Fail

Any Text WCAG AAA × Fail

Black Background



Color Contrast Check

Large Text (above 18pt) WCAG AA ✓ Pass

Any Text WCAG AA ✓ Pass

Large Text (above 18pt) WCAG AAA ✓ Pass

Any Text WCAG AAA × Fail

If you want to check with other color combinations, try the [Color Contrast Checker](#).

Hex DA7357 Background



This preview shows how black text looks on a background with the Hex color DA7357.

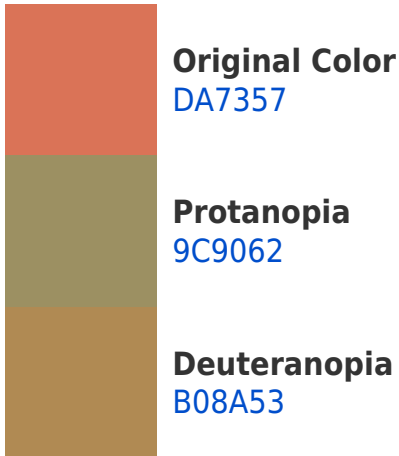


This preview shows how white text looks on a background with the Hex color DA7357.

Color Blindness Simulation

Color vision deficiency is a very complex topic, and I could not describe the different causes any better than Wikipedia does, so if you want to learn more, you should check out their [article about color blindness](#).

Dichromacy





Tritanopia
DC6F77

Trichromacy



Original Color
DA7357



Protanomaly
B3855E



Deuteranomaly
BF8254



Tritanomaly
DB706B

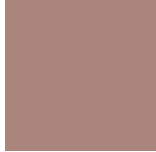
Monochromacy



Original Color
DA7357



Achromatopsia
8F8F8F



Achromatomaly
AA857B

CSS Examples

Text

The CSS property to change the color of the text to Hex DA7357 is called "color". The color property can be set on classes, ids or directly on the HTML element.

This example shows how text in the color #DA7357 looks like.

```
.text, #text, p{  
  color:#DA7357  
}
```

If you want to add a text shadow in that color use the text-shadow property, you can generate a text shadow directly with our [CSS Text Shadow Generator](#).

Here you see how black text with a 4 pixel #DA7357 colored shadow looks like.

```
.shadow{ text-shadow: 4px 4px 2px #DA7357  
}
```

Border

The CSS property to change the border of an element to Hex DA7357 is called "border". The border property can be set on classes, ids or directly on the HTML element.

This example shows the color as border, it can be applied via the CSS property "border" or "border-color".

```
.border, #border, table{ border:4px solid  
#DA7357 }
```

If only the border color should be changed use the property `border-color`.

```
.border{ border-color:#DA7357 }
```

If you want to add a box shadow in that color use:

Here you see how a box with a 4 pixel #DA7357 colored shadow looks like.

```
.boxshadow{ -moz-box-shadow:4px 4px 4px  
4px #DA7357; -webkit-box-shadow:4px 4px  
4px 4px #DA7357; box-shadow:4px 4px 4px  
4px #DA7357 }
```

Background

The CSS property to change the background color of an element to Hex DA7357 is called "background". The background property can be set on classes, ids or directly on the HTML element.

```
.background, #background, body{  
background:#DA7357 }
```

If only the background color should be changed can be used:

```
.background{ background-color:#DA7357 }
```

This example shows the color as background, it is applied via the CSS property "background".

To optimize and compress your CSS code, you can use our [online CSS compressor and optimizer](#) based on csstidy. If you want to create a linear or radial gradient as background or border, check our [CSS Gradient Generator](#).

Hey! You found this booklet interesting? Support Converting Colors with the new Membership Option!

The pro membership hides all ads, plus gives you double the colors in the color bucket, and more awesome pro features!

[Learn more, Memberships starting at \\$2.50/m!](#)

**Follow me
on Twitter!**

@ConvertingColor