

Converting Colors

Hex(DAB1B9)

Have a look what the booklet for
Hex(DAB1B9) contains.

Hex(DAB1B9)	3
<i>Conversions</i>	4
<i>Details</i>	6
<i>Harmonies</i>	11
<i>Previews</i>	23
<i>Color Blindness Simulation</i>	26
<i>CSS Examples</i>	29

Color

Hex(DAB1B9)

Conversions

Conversions Part 1

Format	Color
Hex	DAB1B9
RGB	218, 177, 185
RGB Percent	85%, 69%, 73%
CMY	0.1451, 0.3059, 0.2745
CMYK	0.00, 0.19, 0.15, 0.15
HSL	348°, 36%, 77%
HSV	348°, 19%, 85%
XYZ	53.3925, 49.8525, 52.7073
YIQ	190.1710, 21.8680, 11.1800

Conversions

Conversions Part 2

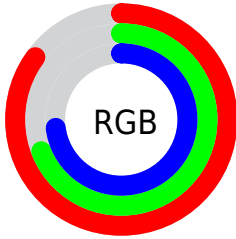
Format	Color
R _Y B	218, 177, 185
Decimal	14332345
CIE Lab	75.98, 16.10, 1.55
CIE LCh	76, 16.172, 5.491
Yxy	49.8525, 0.3424, 0.3197
Android (android.graphics.Color)	4292522425 (0xFFDAB1B9)
YUV	190.1710, -2.5493, 24.4060
Hunter-Lab	70.6063, 11.4208, 5.1646

Details

The Hex color **DAB1B9** is a light color, and the websafe version is hex **CC9999**. A complement of this color would be **B1DAD2**, and the grayscale version is **BEBEBE**.

A 20% lighter version of the original color is **FFE9F1**, and **A37C84** is the 20% darker color. If you saturate the color by 10%, you get **DA9BA7**, and if you desaturate by 10%, it is **DAC7CB**.

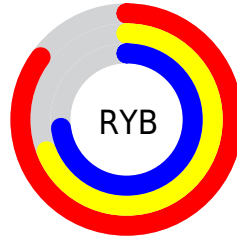
Distribution



Red (85%)

Green (69%)

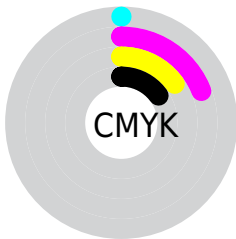
Blue (73%)



Red (85%)

Yellow (69%)

Blue (73%)

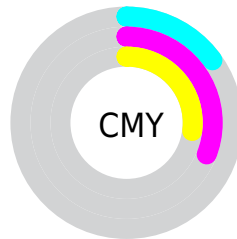


Cyan (0%)

Magenta (19%)

Yellow (15%)

Black (15%)



Cyan (15%)

Magenta (31%)

Yellow (27%)

Brightness & Saturation Gradients

These gradients show how the Hex color DAB1B9 changes by changing the brightness by 10 percent. The first figure shows a shift by +10% for each color and the second figure -10%.

Similar to the brightness gradients but the following saturation gradients show a change of the Hex color DAB1B9 by changing the saturation by 10% instead.

 DAB1B9

 DAB1B9

FFFFFF

 BE969E

 FFE9F1

 A37C84

 88636B

 6E4B53

 55343C

 3D1E26

 270911

 000000

 DAB1B9

 DAB1B9

 DA9BA7

 DAC7CB

 DA8596

 DADDDC

 DA7084

 DAF2EE

 DA5A73

 DAFFFF

 DA4461

 DA2E50

 DA183E

 DA032D

 DA002B

Harmonies

Analogous

The Analogous color harmony consists of three colors that are next to each other on the color wheel.



D1B3C8



DAB1B9



DAB2AB

Triad

The Triadic color harmony groups three colors that are evenly spaced from another and form a triangle on the color wheel.



DAB1B9



B4C0A3



9DC0D6

Complementary

The Complementary color scheme is a pair of colors which are on the opposite of each other on the color wheel.



DAB1B9



B1DAD2

Split Complementary

Split-complementary colors differ from the complementary color scheme. The scheme consists of three colors, the original color and two neighbors of the complement color.



95C3CC



DAB1B9



A3C3AE

Square

The Square scheme is like the rectangle color scheme, but the four colors are evenly spaced on the color wheel.



DAB1B9



C4BB9E



97C4BE



AEBCD9

Rectangle

The Rectangle color scheme consists of four colors that form a rectangle on the color wheel.



DAB1B9



D6B5A3



97C4BE



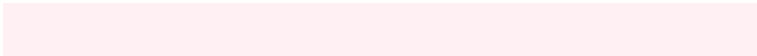
99C1D3

Sweetspot

The Sweet Spot groups the original color and five complimentary colors.



DAB1B9



FFF0F3



D2B1DA



807778



000000



808080

Same Dimension

The Same Dimension uses a secret algorithm to generate beautiful new colors.



DAB1B9



FFC4D0



DABDB1



6E6365



AD0022



2E0009

Inverse Universe

The Inverse Universe completely reimagines the original color for something new.



DAB1B9



FFC4D0



B1CEDA



6E6365



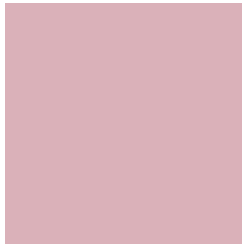
AD0022



2E0009

Previews

White Background



This preview shows how the Hex color DAB1B9 looks on a white background.

Color Contrast Check

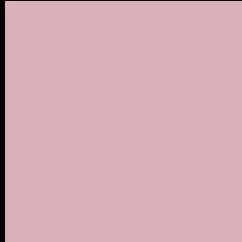
Large Text (above 18pt) WCAG AA × Fail

Any Text WCAG AA × Fail

Large Text (above 18pt) WCAG AAA × Fail

Any Text WCAG AAA × Fail

Black Background



This preview shows how the Hex color DAB1B9 looks on a black background.

Color Contrast Check

Large Text (above 18pt) WCAG AA ✓ Pass

Any Text WCAG AA ✓ Pass

Large Text (above 18pt) WCAG AAA ✓ Pass

Any Text WCAG AAA ✓ Pass

If you want to check with other color combinations, try the [Color Contrast Checker](#).

Hex DAB1B9 Background



This preview shows how black text looks on a background with the Hex color DAB1B9.



This preview shows how white text looks on a background with the Hex color DAB1B9.

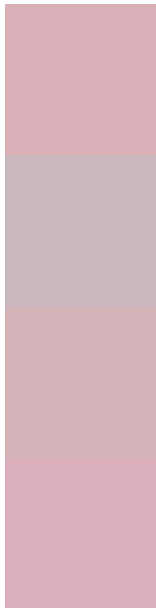
Color Blindness Simulation

Color vision deficiency is a very complex topic, and I could not describe the different causes any better than Wikipedia does, so if you want to learn more, you should check out their [article about color blindness](#).

Dichromacy



Trichromacy



Original Color
DAB1B9

Protanomaly
C8B7BC

Deuteranomaly
D3B4B8

Tritanomaly
DBB0BC

Monochromacy



Original Color
DAB1B9

Achromatopsia
BEBEBE

Achromatomaly
C8B9BC

CSS Examples

Text

The CSS property to change the color of the text to Hex DAB1B9 is called "color". The color property can be set on classes, ids or directly on the HTML element.

This example shows how text in the color #DAB1B9 looks like.

```
.text, #text, p{  
  color:#DAB1B9  
}
```

If you want to add a text shadow in that color use the text-shadow property, you can generate a text shadow directly with our [CSS Text Shadow Generator](#).

Here you see how black text with a 4 pixel #DAB1B9 colored shadow looks like.

```
.shadow{ text-shadow: 4px 4px 2px #DAB1B9
}
```

Border

The CSS property to change the border of an element to Hex DAB1B9 is called "border". The border property can be set on classes, ids or directly on the HTML element.

This example shows the color as border, it can be applied via the CSS property "border" or "border-color".

```
.border, #border, table{ border:4px solid
#DAB1B9 }
```

If only the border color should be changed use the property `border-color`.

```
.border{ border-color:#DAB1B9 }
```

If you want to add a box shadow in that color use:

Here you see how a box with a 4 pixel #DAB1B9 colored shadow looks like.

```
.boxshadow{ -moz-box-shadow:4px 4px 4px  
4px #DAB1B9; -webkit-box-shadow:4px 4px  
4px 4px #DAB1B9; box-shadow:4px 4px 4px  
4px #DAB1B9 }
```

Background

The CSS property to change the background color of an element to Hex DAB1B9 is called "background". The background property can be set on classes, ids or directly on the HTML element.

```
.background, #background, body{  
background:#DAB1B9 }
```

If only the background color should be changed can be used:

```
.background{ background-color:#DAB1B9 }
```

This example shows the color as background, it is applied via the CSS property "background".

To optimize and compress your CSS code, you can use our [online CSS compressor and optimizer](#) based on csstidy. If you want to create a linear or radial gradient as background or border, check our [CSS Gradient Generator](#).

Hey! You found this booklet interesting? Support Converting Colors with the new Membership Option!

The pro membership hides all ads, plus gives you double the colors in the color bucket, and more awesome pro features!

[Learn more, Memberships starting at \\$2.50/m!](#)

**Follow me
on Twitter!**

@ConvertingColor