

Converting Colors

Hex(DAB2B3)

Have a look what the booklet for
Hex(DAB2B3) contains.

Hex(DAB2B3)	3
<i>Conversions</i>	4
<i>Details</i>	6
<i>Harmonies</i>	11
<i>Previews</i>	23
<i>Color Blindness Simulation</i>	26
<i>CSS Examples</i>	29

Color

Hex(DAB2B3)

Conversions

Conversions Part 1

Format	Color
Hex	DAB2B3
RGB	218, 178, 179
RGB Percent	85%, 70%, 70%
CMY	0.1451, 0.3020, 0.2980
CMYK	0.00, 0.18, 0.18, 0.15
HSL	358°, 35%, 78%
HSV	358°, 18%, 85%
XYZ	52.9705, 50.0009, 49.5071
YIQ	190.0740, 23.5190, 8.7910

Conversions

Conversions Part 2

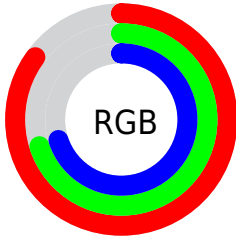
Format	Color
R _Y B	218, 178, 179
Decimal	14332595
CIE Lab	76.07, 14.61, 4.95
CIE LCh	76, 15.430, 18.710
Yxy	50.0009, 0.3474, 0.3279
Android (android.graphics.Color)	4292522675 (0xFFDAB2B3)
YUV	190.0740, -5.4595, 24.4911
Hunter-Lab	70.7113, 9.9713, 7.9872

Details

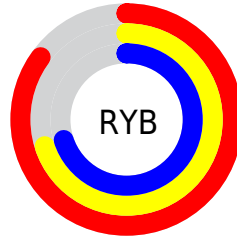
The Hex color **DAB2B3** is a light color, and the websafe version is hex **CC9999**. A complement of this color would be **B2DAD9**, and the grayscale version is **BEBEBE**.

A 20% lighter version of the original color is **FFEAEB**, and **A37D7E** is the 20% darker color. If you saturate the color by 10%, you get **DA9C9E**, and if you desaturate by 10%, it is **DAC8C8**.

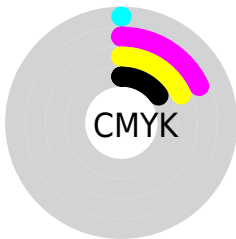
Distribution



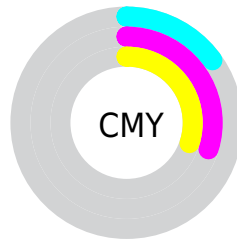
- Red (85%)
- Green (70%)
- Blue (70%)



- Red (85%)
- Yellow (70%)
- Blue (70%)



- Cyan (0%)
- Magenta (18%)
- Yellow (18%)
- Black (15%)



- Cyan (15%)
- Magenta (30%)
- Yellow (30%)

Brightness & Saturation Gradients

These gradients show how the Hex color DAB2B3 changes by changing the brightness by 10 percent. The first figure shows a shift by +10% for each color and the second figure -10%.

Similar to the brightness gradients but the following saturation gradients show a change of the Hex color DAB2B3 by changing the saturation by 10% instead.

 DAB2B3

 DAB2B3

FFFFFF

 BE9798

 FFEAEB

 A37D7E

 886465

 6E4C4D

 553537

 3D1F21

 270A0B

 000000

 DAB2B3

 DAB2B3

 DA9C9E

 DAC8C8

 DA8688

 DADEDE

 DA7173

 DAF3F3

 DA5B5E

 DAFFFF

 DA4549

 DA2F33

 DA191E

 DA0409

 DA0005

Harmonies

Analogous

The Analogous color harmony consists of three colors that are next to each other on the color wheel.



D5B2C2



DAB2B3



D7B4A7

Triad

The Triadic color harmony groups three colors that are evenly spaced from another and form a triangle on the color wheel.



DAB2B3



ADC1A8



A6BED7

Complementary

The Complementary color scheme is a pair of colors which are on the opposite of each other on the color wheel.



DAB2B3



B2DAD9

Split Complementary

Split-complementary colors differ from the complementary color scheme. The scheme consists of three colors, the original color and two neighbors of the complement color.



99C2D0



DAB2B3



9FC4B5

Square

The Square scheme is like the rectangle color scheme, but the four colors are evenly spaced on the color wheel.



DAB2B3



BDBDA1



97C4C4



B7BAD6

Rectangle

The Rectangle color scheme consists of four colors that form a rectangle on the color wheel.



DAB2B3



D0B7A1



97C4C4



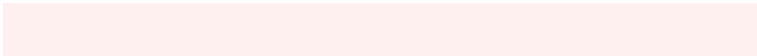
A1C0D6

Sweetspot

The Sweet Spot groups the original color and five complimentary colors.



DAB2B3



FFF0F0



D9B2DA



807777



000000



808080

Same Dimension

The Same Dimension uses a secret algorithm to generate beautiful new colors.



DAB2B3



FFC7C8



DAC5B2



6E6363



AD0004



2E0001

Inverse Universe

The Inverse Universe completely reimagines the original color for something new.



DAB2B3



FFC7C8



B2C7DA



6E6363



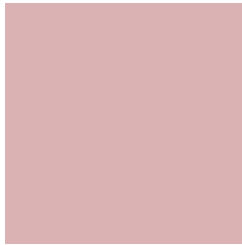
AD0004



2E0001

Previews

White Background



This preview shows how the Hex color DAB2B3 looks on a white background.

Color Contrast Check

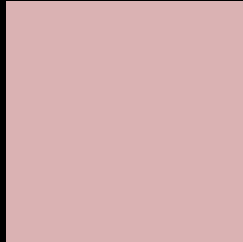
Large Text (above 18pt) WCAG AA × Fail

Any Text WCAG AA × Fail

Large Text (above 18pt) WCAG AAA × Fail

Any Text WCAG AAA × Fail

Black Background



This preview shows how the Hex color DAB2B3 looks on a black background.

Color Contrast Check

Large Text (above 18pt) WCAG AA ✓ Pass

Any Text WCAG AA ✓ Pass

Large Text (above 18pt) WCAG AAA ✓ Pass

Any Text WCAG AAA ✓ Pass

If you want to check with other color combinations, try the [Color Contrast Checker](#).

Hex DAB2B3 Background



This preview shows how black text looks on a background with the Hex color DAB2B3.

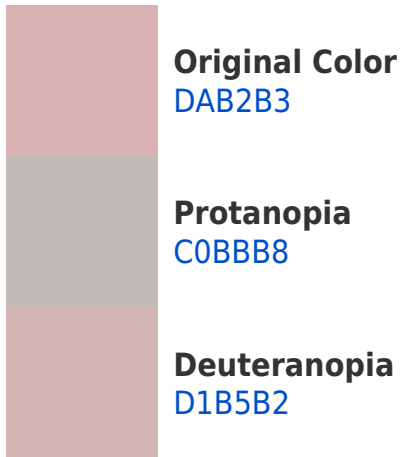


This preview shows how white text looks on a background with the Hex color DAB2B3.

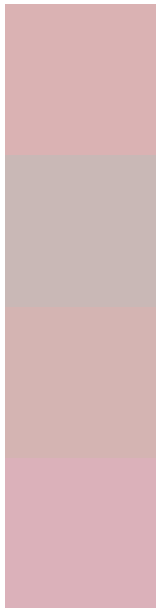
Color Blindness Simulation

Color vision deficiency is a very complex topic, and I could not describe the different causes any better than Wikipedia does, so if you want to learn more, you should check out their [article about color blindness](#).

Dichromacy



Trichromacy



Original Color
DAB2B3

Protanomaly
C9B8B6

Deuteranomaly
D4B4B2

Tritanomaly
DBB1BA

Monochromacy



Original Color
DAB2B3

Achromatopsia
BEBEBE

Achromatomaly
C8BABA

CSS Examples

Text

The CSS property to change the color of the text to Hex DAB2B3 is called "color". The color property can be set on classes, ids or directly on the HTML element.

This example shows how text in the color #DAB2B3 looks like.

```
.text, #text, p{  
    color:#DAB2B3  
}
```

If you want to add a text shadow in that color use the text-shadow property, you can generate a text shadow directly with our [CSS Text Shadow Generator](#).

Here you see how black text with a 4 pixel #DAB2B3 colored shadow looks like.

```
.shadow{ text-shadow: 4px 4px 2px #DAB2B3
}
```

Border

The CSS property to change the border of an element to Hex DAB2B3 is called "border". The border property can be set on classes, ids or directly on the HTML element.

This example shows the color as border, it can be applied via the CSS property "border" or "border-color".

```
.border, #border, table{ border:4px solid
#DAB2B3 }
```

If only the border color should be changed use the property `border-color`.

```
.border{ border-color:#DAB2B3 }
```

If you want to add a box shadow in that color use:

Here you see how a box with a 4 pixel #DAB2B3 colored shadow looks like.

```
.boxshadow{ -moz-box-shadow:4px 4px 4px  
4px #DAB2B3; -webkit-box-shadow:4px 4px  
4px 4px #DAB2B3; box-shadow:4px 4px 4px  
4px #DAB2B3 }
```

Background

The CSS property to change the background color of an element to Hex DAB2B3 is called "background". The background property can be set on classes, ids or directly on the HTML element.

```
.background, #background, body{  
background:#DAB2B3 }
```

If only the background color should be changed can be used:

```
.background{ background-color:#DAB2B3 }
```

This example shows the color as background, it is applied via the CSS property "background".

To optimize and compress your CSS code, you can use our [online CSS compressor and optimizer](#) based on csstidy. If you want to create a linear or radial gradient as background or border, check our [CSS Gradient Generator](#).

Hey! You found this booklet interesting? Support Converting Colors with the new Membership Option!

The pro membership hides all ads, plus gives you double the colors in the color bucket, and more awesome pro features!

[Learn more, Memberships starting at \\$2.50/m!](#)

**Follow me
on Twitter!**

@ConvertingColor