

# Converting Colors

Hex(DAB489)

Have a look what the booklet for  
Hex(DAB489) contains.

|  |    |
|--|----|
| <b>Hex(DAB489)</b> .....                       | 3  |
| <b><i>Conversions</i></b> .....                | 4  |
| <b><i>Details</i></b> .....                    | 6  |
| <b><i>Harmonies</i></b> .....                  | 11 |
| <b><i>Previews</i></b> .....                   | 23 |
| <b><i>Color Blindness Simulation</i></b> ..... | 26 |
| <b><i>CSS Examples</i></b> .....               | 29 |

**Color**

**Hex(DAB489)**

# Conversions

## Conversions Part 1

| <b>Format</b> | <b>Color</b>               |
|---------------|----------------------------|
| Hex           | DAB489                     |
| RGB           | 218, 180, 137              |
| RGB Percent   | 85%, 71%, 54%              |
| CMY           | 0.1451, 0.2941, 0.4627     |
| CMYK          | 0.00, 0.17, 0.37, 0.15     |
| HSL           | 32°, 52%, 70%              |
| HSV           | 32°, 37%, 85%              |
| XYZ           | 49.7501, 49.3541, 30.5711  |
| YIQ           | 186.4600, 36.4510, -5.3170 |

# Conversions

## Conversions Part 2

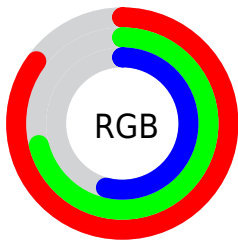
| Format                              | Color  |
|-------------------------------------|--|
| <a href="#">RYB</a>                 | <a href="#">209, 218, 137</a>                                |
| Decimal                             | <a href="#">14333065</a>                                     |
| CIELab                              | <a href="#">75.67, 7.82, 27.09</a>                           |
| CIELCh                              | <a href="#">76, 28.197, 73.900</a>                           |
| Yxy                                 | <a href="#">49.3541, 0.3837, 0.3806</a>                      |
| Android<br>(android.graphics.Color) | <a href="#">4292523145</a><br>( <a href="#">0xFFDAB489</a> ) |
| YUV                                 | <a href="#">186.4600, -24.3838, 27.6606</a>                  |
| Hunter-Lab                          | <a href="#">70.2525, 3.4649, 23.3761</a>                     |

# Details

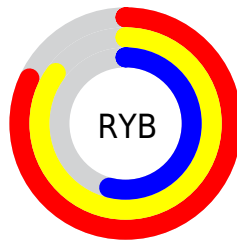
The Hex color **DAB489** is a light color, and the websafe version is hex **FFCC99**. A complement of this color would be **89AFDA**, and the grayscale version is **BBBBBB**.

A 20% lighter version of the original color is **FFECBF**, and **A27F57** is the 20% darker color. If you saturate the color by 10%, you get **DAAA73**, and if you desaturate by 10%, it is **DABE9F**.

# Distribution



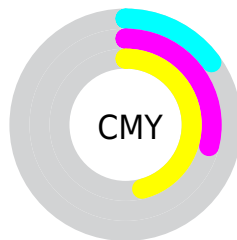
- Red (85%)
- Green (71%)
- Blue (54%)



- Red (82%)
- Yellow (85%)
- Blue (54%)



- Cyan (0%)
- Magenta (17%)
- Yellow (37%)
- Black (15%)



- Cyan (15%)
- Magenta (29%)
- Yellow (46%)

# Brightness & Saturation Gradients

These gradients show how the Hex color DAB489 changes by changing the brightness by 10 percent. The first figure shows a shift by +10% for each color and the second figure -10%.

Similar to the brightness gradients but the following saturation gradients show a change of the Hex color DAB489 by changing the saturation by 10% instead.



 DAB489

 DAB489

FFFFFF

 BE996F

 FFECBF

 A27F57

 FFFFDB

 86663F

 FFFFF7

 6C4E28

 523812

 3A2200

 220D00

 000000

 DAB489

 DAB489

 DAAA73

 DABE9F

 DAA05D

 DAC8B5

 DA9548

 DAD3CA

 DA8B32

 DADDE0

 DA811C

 DAE7F6

 DA7706

 DAF1FF

 DA7400

 DAFCFF

 DAFFFF

# Harmonies

## Analogous

The Analogous color harmony consists of three colors that are next to each other on the color wheel.



EBAC98



DAB489



C1BD88

# Triad

The Triadic color harmony groups three colors that are evenly spaced from another and form a triangle on the color wheel.



DAB489



70C9C6



CDB0E0

# Complementary

The Complementary color scheme is a pair of colors which are on the opposite of each other on the color wheel.



DAB489



89AFDA

# Split Complementary

Split-complementary colors differ from the complementary color scheme. The scheme consists of three colors, the original color and two neighbors of the complement color.



ABB9ED



DAB489



6FC7DE

# Square

The Square scheme is like the rectangle color scheme, but the four colors are evenly spaced on the color wheel.



DAB489



86C8AB



87C1EC



E5A9CA

# Rectangle

The Rectangle color scheme consists of four colors that form a rectangle on the color wheel.



DAB489



AEC28F



87C1EC



C3B3E6

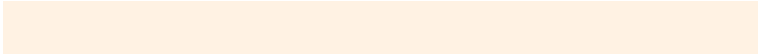


# Sweetspot

The Sweet Spot groups the original color and five complimentary colors.



DAB489



FFF2E3



DA89B0



80786F



000000



808080



# Same Dimension

The Same Dimension uses a secret algorithm to generate beautiful new colors.



DAB489



FFC98C



D9DA89



6E6963



AD5C00



2E1800

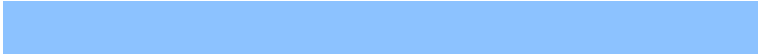


# Inverse Universe

The Inverse Universe completely reimagines the original color for something new.



89AFDA



8CC2FF



8A89DA



63686E



0051AD

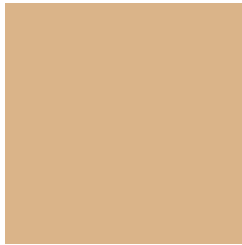


00162E



# Previews

## White Background



This preview shows how the Hex color DAB489 looks on a white background.

## Color Contrast Check

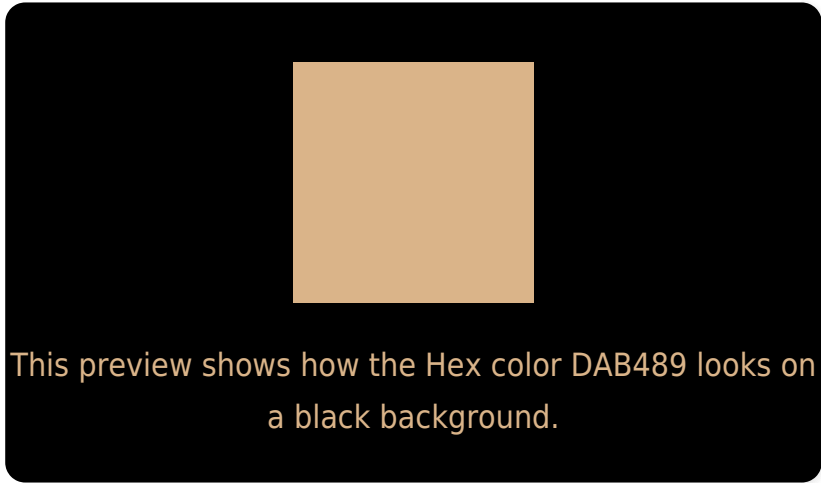
Large Text (above 18pt) WCAG AA × Fail

Any Text WCAG AA × Fail

Large Text (above 18pt) WCAG AAA × Fail

Any Text WCAG AAA × Fail

# Black Background



## Color Contrast Check

Large Text (above 18pt) WCAG AA ✓ Pass

Any Text WCAG AA ✓ Pass

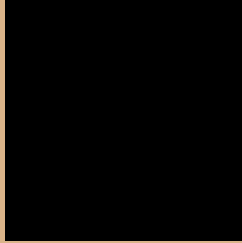
Large Text (above 18pt) WCAG AAA ✓ Pass

Any Text WCAG AAA ✓ Pass

If you want to check with other color combinations, try the [Color Contrast Checker](#).



## Hex DAB489 Background



This preview shows how black text looks on a background with the Hex color DAB489.



This preview shows how white text looks on a background with the Hex color DAB489.

# Color Blindness Simulation

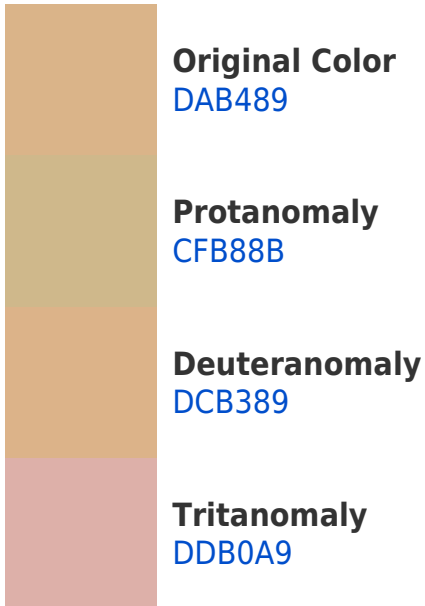
Color vision deficiency is a very complex topic, and I could not describe the different causes any better than Wikipedia does, so if you want to learn more, you should check out their [article about color blindness](#).

## Dichromacy





# Trichromacy



# Monochromacy



# CSS Examples

## Text

The CSS property to change the color of the text to Hex DAB489 is called "color". The color property can be set on classes, ids or directly on the HTML element.

This example shows how text in the color #DAB489 looks like.

```
.text, #text, p{  
    color:#DAB489  
}
```

If you want to add a text shadow in that color use the text-shadow property, you can generate a text shadow directly with our [CSS Text Shadow Generator](#).

Here you see how black text with a 4 pixel #DAB489 colored shadow looks like.

```
.shadow{ text-shadow: 4px 4px 2px #DAB489
}
```

## Border

The CSS property to change the border of an element to Hex DAB489 is called "border". The border property can be set on classes, ids or directly on the HTML element.

This example shows the color as border, it can be applied via the CSS property "border" or "border-color".

```
.border, #border, table{ border:4px solid
#DAB489 }
```

If only the border color should be changed use the property `border-color`.

```
.border{ border-color:#DAB489 }
```

If you want to add a box shadow in that color use:

Here you see how a box with a 4 pixel #DAB489 colored shadow looks like.

```
.boxshadow{ -moz-box-shadow:4px 4px 4px  
4px #DAB489; -webkit-box-shadow:4px 4px  
4px 4px #DAB489; box-shadow:4px 4px 4px  
4px #DAB489 }
```

# Background

The CSS property to change the background color of an element to Hex DAB489 is called "background". The background property can be set on classes, ids or directly on the HTML element.

```
.background, #background, body{  
background:#DAB489 }
```

If only the background color should be changed can be used:

```
.background{ background-color:#DAB489 }
```

This example shows the color as background, it is applied via the CSS property "background".

To optimize and compress your CSS code, you can use our [online CSS compressor and optimizer](#) based on csstidy. If you want to create a linear or radial gradient as background or border, check our [CSS Gradient Generator](#).



Hey! You found this booklet interesting? Support Converting Colors with the new Membership Option!

The pro membership hides all ads, plus gives you double the colors in the color bucket, and more awesome pro features!

**[Learn more, Memberships starting at \\$2.50/m!](#)**

**Follow me  
on Twitter!**

@ConvertingColor