

Converting Colors

Hex(DAB4B2)

Have a look what the booklet for
Hex(DAB4B2) contains.

Hex(DAB4B2)	3
<i>Conversions</i>	4
<i>Details</i>	6
<i>Harmonies</i>	11
<i>Previews</i>	23
<i>Color Blindness Simulation</i>	26
<i>CSS Examples</i>	29

Color

Hex(DAB4B2)

Conversions

Conversions Part 1

Format	Color
Hex	DAB4B2
RGB	218, 180, 178
RGB Percent	85%, 71%, 70%
CMY	0.1451, 0.2941, 0.3020
CMYK	0.00, 0.17, 0.18, 0.15
HSL	3°, 35%, 78%
HSV	3°, 18%, 85%
XYZ	53.2706, 50.7623, 49.1099
YIQ	191.1340, 23.2900, 7.4340

Conversions

Conversions Part 2

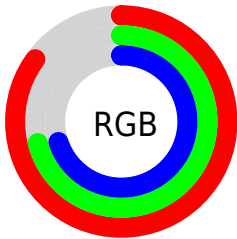
Format	Color
R _Y B	218, 180, 178
Decimal	14333106
CIE Lab	76.53, 13.39, 6.16
CIE LCh	77, 14.737, 24.724
Yxy	50.7623, 0.3478, 0.3315
Android (android.graphics.Color)	4292523186 (0xFFDAB4B2)
YUV	191.1340, -6.4751, 23.5615
Hunter-Lab	71.2477, 8.7778, 9.0057

Details

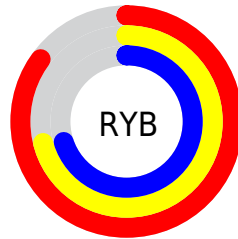
The Hex color **DAB4B2** is a light color, and the websafe version is hex **CC9999**. A complement of this color would be **B2D8DA**, and the grayscale version is **BFBFBF**.

A 20% lighter version of the original color is **FFECEA**, and **A37F7D** is the 20% darker color. If you saturate the color by 10%, you get **DA9F9C**, and if you desaturate by 10%, it is **DAC9C8**.

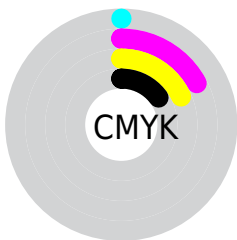
Distribution



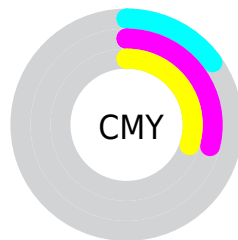
- Red (85%)
- Green (71%)
- Blue (70%)



- Red (85%)
- Yellow (71%)
- Blue (70%)



- Cyan (0%)
- Magenta (17%)
- Yellow (18%)
- Black (15%)



- Cyan (15%)
- Magenta (29%)
- Yellow (30%)

Brightness & Saturation Gradients

These gradients show how the Hex color DAB4B2 changes by changing the brightness by 10 percent. The first figure shows a shift by +10% for each color and the second figure -10%.

Similar to the brightness gradients but the following saturation gradients show a change of the Hex color DAB4B2 by changing the saturation by 10% instead.

 DAB4B2

 DAB4B2

FFFFFF

 BE9997

 FFECEA

 A37F7D

 886664

 6E4E4D

 553736

 3D2121

 270C09

 000000

 DAB4B2

 DAB4B2

 DA9F9C

 DAC9C8

 DA8B86

 DADDDE

 DA7671

 DAF2F3

 DA615B

 DAFFFF

 DA4C45

 DA382F

 DA2319

 DA0E04

 DA0B00

Harmonies

Analogous

The Analogous color harmony consists of three colors that are next to each other on the color wheel.



D7B4C0



DAB4B2



D5B7A7

Triad

The Triadic color harmony groups three colors that are evenly spaced from another and form a triangle on the color wheel.



DAB4B2



ACC3AD



ABBF8

Complementary

The Complementary color scheme is a pair of colors which are on the opposite of each other on the color wheel.



DAB4B2



B2D8DA

Split Complementary

Split-complementary colors differ from the complementary color scheme. The scheme consists of three colors, the original color and two neighbors of the complement color.



9EC2D3



DAB4B2



9FC5BA

Square

The Square scheme is like the rectangle color scheme, but the four colors are evenly spaced on the color wheel.



DAB4B2



BCBFA4



9AC5C8



BDBAD5

Rectangle

The Rectangle color scheme consists of four colors that form a rectangle on the color wheel.



DAB4B2



CFBAA3



9AC5C8



A6C0D7

Sweetspot

The Sweet Spot groups the original color and five complimentary colors.



DAB4B2



FFF0F0



DAB2D8



807777



000000



808080

Same Dimension

The Same Dimension uses a secret algorithm to generate beautiful new colors.



DAB4B2



FFCAC7



DAC8B2



6E6363



AD0900



2E0200

Inverse Universe

The Inverse Universe completely reimagines the original color for something new.



B2D8DA



C7FCFF



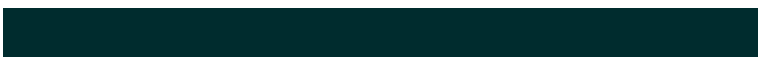
B2C4DA



636D6E



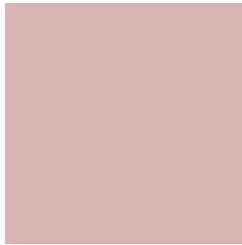
00A5AD



002C2E

Previews

White Background



This preview shows how the Hex color DAB4B2 looks on a white background.

Color Contrast Check

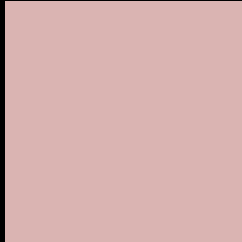
Large Text (above 18pt) WCAG AA × Fail

Any Text WCAG AA × Fail

Large Text (above 18pt) WCAG AAA × Fail

Any Text WCAG AAA × Fail

Black Background



This preview shows how the Hex color DAB4B2 looks on a black background.

Color Contrast Check

Large Text (above 18pt) WCAG AA ✓ Pass

Any Text WCAG AA ✓ Pass

Large Text (above 18pt) WCAG AAA ✓ Pass

Any Text WCAG AAA ✓ Pass

If you want to check with other color combinations, try the [Color Contrast Checker](#).

Hex DAB4B2 Background



This preview shows how black text looks on a background with the Hex color DAB4B2.



This preview shows how white text looks on a background with the Hex color DAB4B2.

Color Blindness Simulation

Color vision deficiency is a very complex topic, and I could not describe the different causes any better than Wikipedia does, so if you want to learn more, you should check out their [article about color blindness](#).

Dichromacy

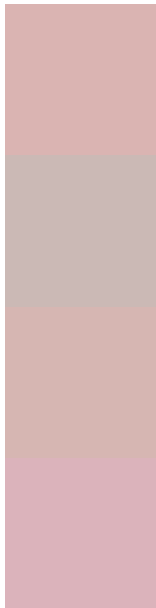


Original Color
DAB4B2

Protanopia
C2BCB7

Deuteranopia
D4B7B2

Trichromacy



Original Color
DAB4B2

Protanomaly
CBB9B5

Deuteranomaly
D6B6B2

Tritanomaly
DBB3BB

Monochromacy



Original Color
DAB4B2

Achromatopsia
BFBFBF

Achromatomaly
C9BBBA

CSS Examples

Text

The CSS property to change the color of the text to Hex DAB4B2 is called "color". The color property can be set on classes, ids or directly on the HTML element.

This example shows how text in the color #DAB4B2 looks like.

```
.text, #text, p{  
    color:#DAB4B2  
}
```

If you want to add a text shadow in that color use the text-shadow property, you can generate a text shadow directly with our [CSS Text Shadow Generator](#).

Here you see how black text with a 4 pixel #DAB4B2 colored shadow looks like.

```
.shadow{ text-shadow: 4px 4px 2px #DAB4B2
}
```

Border

The CSS property to change the border of an element to Hex DAB4B2 is called "border". The border property can be set on classes, ids or directly on the HTML element.

This example shows the color as border, it can be applied via the CSS property "border" or "border-color".

```
.border, #border, table{ border:4px solid
#DAB4B2 }
```

If only the border color should be changed use the property `border-color`.

```
.border{ border-color:#DAB4B2 }
```

If you want to add a box shadow in that color use:

Here you see how a box with a 4 pixel #DAB4B2 colored shadow looks like.

```
.boxshadow{ -moz-box-shadow:4px 4px 4px  
4px #DAB4B2; -webkit-box-shadow:4px 4px  
4px 4px #DAB4B2; box-shadow:4px 4px 4px  
4px #DAB4B2 }
```

Background

The CSS property to change the background color of an element to Hex DAB4B2 is called "background". The background property can be set on classes, ids or directly on the HTML element.

```
.background, #background, body{  
background:#DAB4B2 }
```

If only the background color should be changed can be used:

```
.background{ background-color:#DAB4B2 }
```

This example shows the color as background, it is applied via the CSS property "background".

To optimize and compress your CSS code, you can use our [online CSS compressor and optimizer](#) based on csstidy. If you want to create a linear or radial gradient as background or border, check our [CSS Gradient Generator](#).

Hey! You found this booklet interesting? Support Converting Colors with the new Membership Option!

The pro membership hides all ads, plus gives you double the colors in the color bucket, and more awesome pro features!

[Learn more, Memberships starting at \\$2.50/m!](#)

**Follow me
on Twitter!**

@ConvertingColor