

Converting Colors

Hex(DABEC0)

Have a look what the booklet for
Hex(DABEC0) contains.

Hex(DABEC0)	3
<i>Conversions</i>	4
<i>Details</i>	6
<i>Harmonies</i>	11
<i>Previews</i>	23
<i>Color Blindness Simulation</i>	26
<i>CSS Examples</i>	29

Color

Hex(DABEC0)

Conversions

Conversions Part 1

Format	Color
Hex	DABECC
RGB	218, 190, 192
RGB Percent	85%, 75%, 75%
CMY	0.1451, 0.2549, 0.2471
CMYK	0.00, 0.13, 0.12, 0.15
HSL	356°, 27%, 80%
HSV	356°, 13%, 85%
XYZ	56.8413, 55.5381, 57.5932
YIQ	198.6000, 16.0460, 6.5580

Conversions

Conversions Part 2

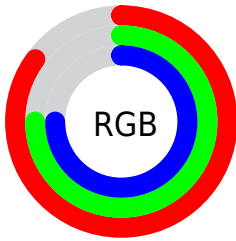
Format	Color
R_{YB}	218, 190, 192
Decimal	14335680
CIE _{Lab}	79.35, 10.26, 2.65
CIE _{LCh}	79, 10.600, 14.483
Yxy	55.5381, 0.3344, 0.3267
Android (android.graphics.Color)	4292525760 (0xFFDABEC0)
YUV	198.6000, -3.2538, 17.0138
Hunter-Lab	74.5239, 5.7298, 6.3465

Details

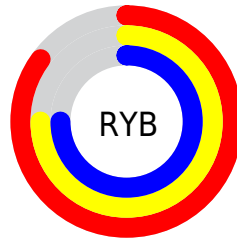
The Hex color **DABEC0** is a light color, and the websafe version is hex **CCCCCC**. A complement of this color would be **BEDAD8**, and the grayscale version is **C7C7C7**.

A 20% lighter version of the original color is **FFF6F8**, and **A3898B** is the 20% darker color. If you saturate the color by 10%, you get **DAA8AC**, and if you desaturate by 10%, it is **DAD4D4**.

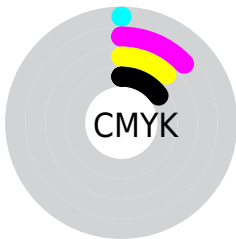
Distribution



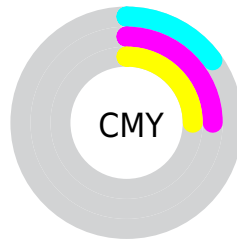
- Red (85%)
- Green (75%)
- Blue (75%)



- Red (85%)
- Yellow (75%)
- Blue (75%)



- Cyan (0%)
- Magenta (13%)
- Yellow (12%)
- Black (15%)



- Cyan (15%)
- Magenta (25%)
- Yellow (25%)

Brightness & Saturation Gradients

These gradients show how the Hex color DABEC0 changes by changing the brightness by 10 percent. The first figure shows a shift by +10% for each color and the second figure -10%.

Similar to the brightness gradients but the following saturation gradients show a change of the Hex color DABEC0 by changing the saturation by 10% instead.

 DABEC0

FFFFFF

 FFF6F8

 DABEC0

 BEA3A5

 A3898B

 886F71

 6F5759

 563F41

 3F292B

 281517

 120000

 000000

 DABEC0

 DABEC0

 DAA8AC

 DAD4D4

 DA9298

 DAEAE8

 DA7D83

 DAFFFD

 DA676F

 DAFFFF

 DA515B

 DA3B47

 DA2532

 DA101E

 DA0010

Harmonies

Analogous

The Analogous color harmony consists of three colors that are next to each other on the color wheel.



D6BECA



DABEC0



D9BFB7

Triad

The Triadic color harmony groups three colors that are evenly spaced from another and form a triangle on the color wheel.



DABEC0



BCC8B6



B5C7D7

Complementary

The Complementary color scheme is a pair of colors which are on the opposite of each other on the color wheel.



DABEC0



BEDAD8

Split Complementary

Split-complementary colors differ from the complementary color scheme. The scheme consists of three colors, the original color and two neighbors of the complement color.



ADC9D2



DABEC0



B2CABF

Square

The Square scheme is like the rectangle color scheme, but the four colors are evenly spaced on the color wheel.



DABEC0



C8C5B1



ADCBC9



C0C4D8

Rectangle

The Rectangle color scheme consists of four colors that form a rectangle on the color wheel.



DABEC0



D5C1B3



ADCBC9



B2C8D6

Sweetspot

The Sweet Spot groups the original color and five complimentary colors.



DABEC0



FFF5F6



D8BEDA



80797A



000000



808080

Same Dimension

The Same Dimension uses a secret algorithm to generate beautiful new colors.



DABEC0



FFD9DB



DACABE



6E6363



AD000C



2E0003

Inverse Universe

The Inverse Universe completely reimagines the original color for something new.



DABEC0



FFD9DB



BECEDA



6E6363



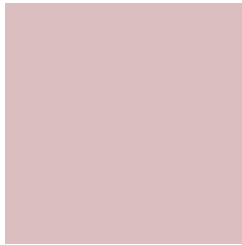
AD000C



2E0003

Previews

White Background



This preview shows how the Hex color DABEC0 looks on a white background.

Color Contrast Check

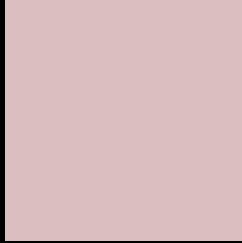
Large Text (above 18pt) WCAG AA × Fail

Any Text WCAG AA × Fail

Large Text (above 18pt) WCAG AAA × Fail

Any Text WCAG AAA × Fail

Black Background



This preview shows how the Hex color DABEC0 looks on a black background.

Color Contrast Check

Large Text (above 18pt) WCAG AA ✓ Pass

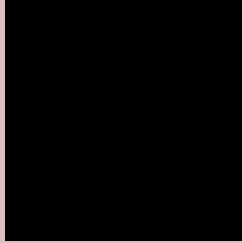
Any Text WCAG AA ✓ Pass

Large Text (above 18pt) WCAG AAA ✓ Pass

Any Text WCAG AAA ✓ Pass

If you want to check with other color combinations, try the [Color Contrast Checker](#).

Hex DABEC0 Background



This preview shows how black text looks on a background with the Hex color DABEC0.



This preview shows how white text looks on a background with the Hex color DABEC0.

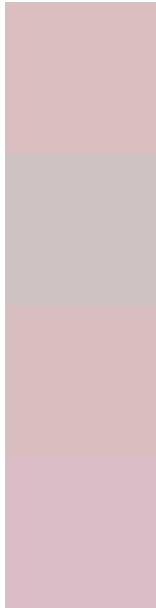
Color Blindness Simulation

Color vision deficiency is a very complex topic, and I could not describe the different causes any better than Wikipedia does, so if you want to learn more, you should check out their [article about color blindness](#).

Dichromacy



Trichromacy



Original Color
DABEC0

Protanomaly
CFC2C2

Deuteranomaly
D9BEC0

Tritanomaly
DBBDC7

Monochromacy



Original Color
DABEC0

Achromatopsia
C7C7C7

Achromatomaly
CEC4C4

CSS Examples

Text

The CSS property to change the color of the text to Hex DABEC0 is called "color". The color property can be set on classes, ids or directly on the HTML element.

This example shows how text in the color #DABEC0 looks like.

```
.text, #text, p{  
    color:#DABEC0  
}
```

If you want to add a text shadow in that color use the text-shadow property, you can generate a text shadow directly with our [CSS Text Shadow Generator](#).

Here you see how black text with a 4 pixel #DABEC0 colored shadow looks like.

```
.shadow{ text-shadow: 4px 4px 2px #DABEC0  
}
```

Border

The CSS property to change the border of an element to Hex DABEC0 is called "border". The border property can be set on classes, ids or directly on the HTML element.

This example shows the color as border, it can be applied via the CSS property "border" or "border-color".

```
.border, #border, table{ border:4px solid  
#DABEC0 }
```

If only the border color should be changed use the property `border-color`.

```
.border{ border-color:#DABEC0 }
```

If you want to add a box shadow in that color use:

Here you see how a box with a 4 pixel #DABEC0 colored shadow looks like.

```
.boxshadow{ -moz-box-shadow:4px 4px 4px  
4px #DABEC0; -webkit-box-shadow:4px 4px  
4px 4px #DABEC0; box-shadow:4px 4px 4px  
4px #DABEC0 }
```

Background

The CSS property to change the background color of an element to Hex DABEC0 is called "background". The background property can be set on classes, ids or directly on the HTML element.

```
.background, #background, body{  
background:#DABEC0 }
```

If only the background color should be changed can be used:

```
.background{ background-color:#DABEC0 }
```

This example shows the color as background, it is applied via the CSS property "background".

To optimize and compress your CSS code, you can use our [online CSS compressor and optimizer](#) based on csstidy. If you want to create a linear or radial gradient as background or border, check our [CSS Gradient Generator](#).

Hey! You found this booklet interesting? Support Converting Colors with the new Membership Option!

The pro membership hides all ads, plus gives you double the colors in the color bucket, and more awesome pro features!

[Learn more, Memberships starting at \\$2.50/m!](#)

**Follow me
on Twitter!**

@ConvertingColor