

Converting Colors

Hex(DABEC8)

Have a look what the booklet for
Hex(DABEC8) contains.

Hex(DABEC8)	3
<i>Conversions</i>	4
<i>Details</i>	6
<i>Harmonies</i>	11
<i>Previews</i>	23
<i>Color Blindness Simulation</i>	26
<i>CSS Examples</i>	29

Color

Hex(DABEC8)

Conversions

Conversions Part 1

Format	Color
Hex	DABEC8
RGB	218, 190, 200
RGB Percent	85%, 75%, 78%
CMY	0.1451, 0.2549, 0.2157
CMYK	0.00, 0.13, 0.08, 0.15
HSL	339°, 27%, 80%
HSV	339°, 13%, 85%
XYZ	57.7522, 55.9025, 62.3900
YIQ	199.5120, 13.4780, 9.0460

Conversions

Conversions Part 2

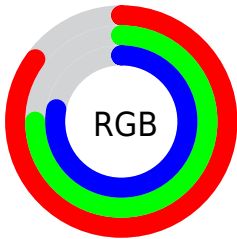
Format	Color
R _Y B	218, 190, 200
Decimal	14335688
CIE Lab	79.56, 11.60, -1.36
CIE LCh	80, 11.684, 353.308
Yxy	55.9025, 0.3281, 0.3175
Android (android.graphics.Color)	4292525768 (0xFFDABEC8)
YUV	199.5120, 0.2406, 16.2140
Hunter-Lab	74.7680, 7.0330, 2.8631

Details

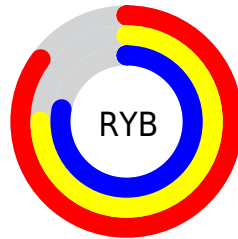
The Hex color **DABEC8** is a light color, and the websafe version is hex **CCCCCC**. A complement of this color would be **BEDAD0**, and the grayscale version is **C8C8C8**.

A 20% lighter version of the original color is **FFF6FF**, and **A38992** is the 20% darker color. If you saturate the color by 10%, you get **DAA8BA**, and if you desaturate by 10%, it is **DAD4D6**.

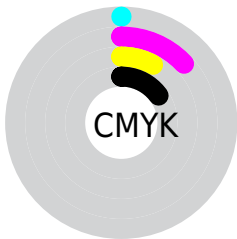
Distribution



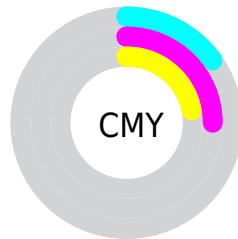
- Red (85%)
- Green (75%)
- Blue (78%)



- Red (85%)
- Yellow (75%)
- Blue (78%)



- Cyan (0%)
- Magenta (13%)
- Yellow (8%)
- Black (15%)



- Cyan (15%)
- Magenta (25%)
- Yellow (22%)

Brightness & Saturation Gradients

These gradients show how the Hex color DABEC8 changes by changing the brightness by 10 percent. The first figure shows a shift by +10% for each color and the second figure -10%.

Similar to the brightness gradients but the following saturation gradients show a change of the Hex color DABEC8 by changing the saturation by 10% instead.

 DABEC8

FFFFFF

 FFF6FF

 DABEC8

 BEA3AD

 A38992

 896F78

 6F5760

 563F48

 3F2932

 28151D

 150002

 000000

 DABEC8

 DABEC8

 DAA8BA

 DAD4D6

 DA92AC

 DAEAE4

 DA7D9E

 DAFFF2

 DA6790

 DAFFFF

 DA5182

 DA3B74

 DA2566

 DA1058

 DA004E

Harmonies

Analogous

The Analogous color harmony consists of three colors that are next to each other on the color wheel.



D1C0D2



DABEC8



DDBEBD

Triad

The Triadic color harmony groups three colors that are evenly spaced from another and form a triangle on the color wheel.



DABEC8



C5C7B1



ADCAD6

Complementary

The Complementary color scheme is a pair of colors which are on the opposite of each other on the color wheel.



DABEC8



BEDAD0

Split Complementary

Split-complementary colors differ from the complementary color scheme. The scheme consists of three colors, the original color and two neighbors of the complement color.



AACBCD



DABEC8



B8CAB8

Square

The Square scheme is like the rectangle color scheme, but the four colors are evenly spaced on the color wheel.



DABEC8



D1C4B0



AECCC2



B7C7DA

Rectangle

The Rectangle color scheme consists of four colors that form a rectangle on the color wheel.



DABEC8



DBBFB7



AECCC2



ABCBD4

Sweetspot

The Sweet Spot groups the original color and five complimentary colors.



DABEC8



FFF5F8



D0BEDA



80797B



000000



808080

Same Dimension

The Same Dimension uses a secret algorithm to generate beautiful new colors.



DABEC8



FFD9E6



DAC2BE



6E6367



AD003E



2E0010

Inverse Universe

The Inverse Universe completely reimagines the original color for something new.



DABEC8



FFD9E6



BED6DA



6E6367



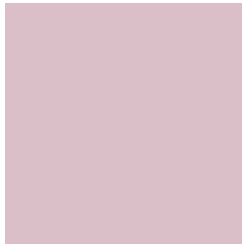
AD003E



2E0010

Previews

White Background



This preview shows how the Hex color DABEC8 looks on a white background.

Color Contrast Check

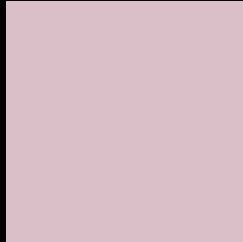
Large Text (above 18pt) WCAG AA × Fail

Any Text WCAG AA × Fail

Large Text (above 18pt) WCAG AAA × Fail

Any Text WCAG AAA × Fail

Black Background



This preview shows how the Hex color DABEC8 looks on a black background.

Color Contrast Check

Large Text (above 18pt) WCAG AA ✓ Pass

Any Text WCAG AA ✓ Pass

Large Text (above 18pt) WCAG AAA ✓ Pass

Any Text WCAG AAA ✓ Pass

If you want to check with other color combinations, try the [Color Contrast Checker](#).

Hex DABEC8 Background



This preview shows how black text looks on a background with the Hex color DABEC8.



This preview shows how white text looks on a background with the Hex color DABEC8.

Color Blindness Simulation

Color vision deficiency is a very complex topic, and I could not describe the different causes any better than Wikipedia does, so if you want to learn more, you should check out their [article about color blindness](#).

Dichromacy



Original Color
DABEC8

Protanopia
C7C4CC

Deuteranopia
D7BFC8

Trichromacy



Original Color
DABEC8

Protanomaly
CEC2CB

Deuteranomaly
D8BFC8

Tritanomaly
DBBDCB

Monochromacy



Original Color
DABEC8

Achromatopsia
C8C8C8

Achromatomaly
CFC4C8

CSS Examples

Text

The CSS property to change the color of the text to Hex DABEC8 is called "color". The color property can be set on classes, ids or directly on the HTML element.

This example shows how text in the color #DABEC8 looks like.

```
.text, #text, p{  
    color:#DABEC8  
}
```

If you want to add a text shadow in that color use the text-shadow property, you can generate a text shadow directly with our [CSS Text Shadow Generator](#).

Here you see how black text with a 4 pixel #DABEC8 colored shadow looks like.

```
.shadow{ text-shadow: 4px 4px 2px #DABEC8
}
```

Border

The CSS property to change the border of an element to Hex DABEC8 is called "border". The border property can be set on classes, ids or directly on the HTML element.

This example shows the color as border, it can be applied via the CSS property "border" or "border-color".

```
.border, #border, table{ border:4px solid
#DABEC8 }
```

If only the border color should be changed use the property `border-color`.

```
.border{ border-color:#DABEC8 }
```

If you want to add a box shadow in that color use:

Here you see how a box with a 4 pixel #DABEC8 colored shadow looks like.

```
.boxshadow{ -moz-box-shadow:4px 4px 4px  
4px #DABEC8; -webkit-box-shadow:4px 4px  
4px 4px #DABEC8; box-shadow:4px 4px 4px  
4px #DABEC8 }
```

Background

The CSS property to change the background color of an element to Hex DABEC8 is called "background". The background property can be set on classes, ids or directly on the HTML element.

```
.background, #background, body{  
background:#DABEC8 }
```

If only the background color should be changed can be used:

```
.background{ background-color:#DABEC8 }
```

This example shows the color as background, it is applied via the CSS property "background".

To optimize and compress your CSS code, you can use our [online CSS compressor and optimizer](#) based on csstidy. If you want to create a linear or radial gradient as background or border, check our [CSS Gradient Generator](#).

Hey! You found this booklet interesting? Support Converting Colors with the new Membership Option!

The pro membership hides all ads, plus gives you double the colors in the color bucket, and more awesome pro features!

[Learn more, Memberships starting at \\$2.50/m!](#)

**Follow me
on Twitter!**

@ConvertingColor