

Converting Colors

Hex(DAC0B9)

Have a look what the booklet for
Hex(DAC0B9) contains.

Hex(DAC0B9)	3
<i>Conversions</i>	4
<i>Details</i>	6
<i>Harmonies</i>	11
<i>Previews</i>	23
<i>Color Blindness Simulation</i>	26
<i>CSS Examples</i>	29

Color

Hex(DAC0B9)

Conversions

Conversions Part 1

Format	Color
Hex	DAC0B9
RGB	218, 192, 185
RGB Percent	85%, 75%, 73%
CMY	0.1451, 0.2471, 0.2745
CMYK	0.00, 0.12, 0.15, 0.15
HSL	13°, 31%, 79%
HSV	13°, 15%, 85%
XYZ	56.5200, 56.1075, 53.7498
YIQ	198.9760, 17.7430, 3.3350

Conversions

Conversions Part 2

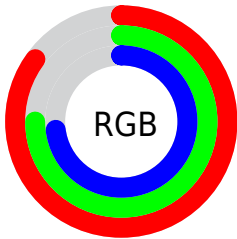
Format	Color
R _Y B	218, 194, 185
Decimal	14336185
CIE Lab	79.67, 8.07, 6.89
CIE LCh	80, 10.611, 40.505
Yxy	56.1075, 0.3397, 0.3372
Android (android.graphics.Color)	4292526265 (0xFFDAC0B9)
YUV	198.9760, -6.8902, 16.6840
Hunter-Lab	74.9049, 3.6048, 9.8885

Details

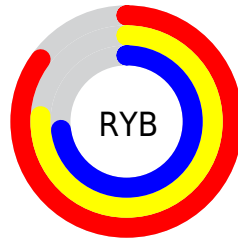
The Hex color **DAC0B9** is a light color, and the websafe version is hex **CCCCCC**. A complement of this color would be **B9D3DA**, and the grayscale version is **C7C7C7**.

A 20% lighter version of the original color is **FFF8F1**, and **A38B84** is the 20% darker color. If you saturate the color by 10%, you get **DAAFA3**, and if you desaturate by 10%, it is **DAD1CF**.

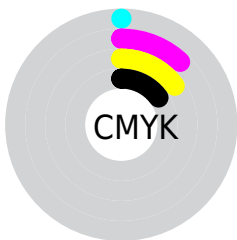
Distribution



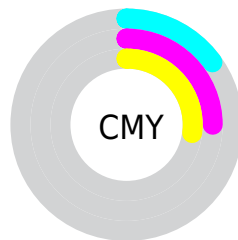
- Red (85%)
- Green (75%)
- Blue (73%)



- Red (85%)
- Yellow (76%)
- Blue (73%)



- Cyan (0%)
- Magenta (12%)
- Yellow (15%)
- Black (15%)



- Cyan (15%)
- Magenta (25%)
- Yellow (27%)

Brightness & Saturation Gradients

These gradients show how the Hex color DAC0B9 changes by changing the brightness by 10 percent. The first figure shows a shift by +10% for each color and the second figure -10%.

Similar to the brightness gradients but the following saturation gradients show a change of the Hex color DAC0B9 by changing the saturation by 10% instead.

 DAC0B9

FFFFFF

 FFF8F1

 DAC0B9

 BEA59E

 A38B84

 88716B

 6F5953

 56413C

 3E2B26

 281611

 100000

 000000

 DAC0B9

 DAC0B9

 DAAFA3

 DAD1CF

 DA9E8D

 DAE2E5

 DA8C78

 DAF4FA

 DA7B62

 DAFFFF

 DA6A4C

 DA5936

 DA4820

 DA370B

 DA2E00

Harmonies

Analogous

The Analogous color harmony consists of three colors that are next to each other on the color wheel.



DBBFC2



DAC0B9



D4C3B3

Triad

The Triadic color harmony groups three colors that are evenly spaced from another and form a triangle on the color wheel.



DAC0B9



B4CBBF



BFC5D9

Complementary

The Complementary color scheme is a pair of colors which are on the opposite of each other on the color wheel.



DAC0B9



B9D3DA

Split Complementary

Split-complementary colors differ from the complementary color scheme. The scheme consists of three colors, the original color and two neighbors of the complement color.



B4C8D8



DAC0B9



AECBC9

Square

The Square scheme is like the rectangle color scheme, but the four colors are evenly spaced on the color wheel.



DAC0B9



BFC9B6



AECBD2



CCC2D5

Rectangle

The Rectangle color scheme consists of four colors that form a rectangle on the color wheel.



DAC0B9



CEC5B2



AECBD2



BBC6D9

Sweetspot

The Sweet Spot groups the original color and five complimentary colors.



DAC0B9



FFF5F2



DAB9D3



807978



000000



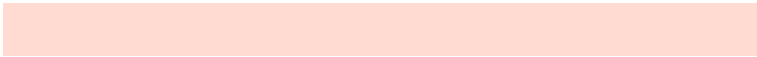
808080

Same Dimension

The Same Dimension uses a secret algorithm to generate beautiful new colors.



DAC0B9



FFDBD1



DAD0B9



6E6563



AD2500



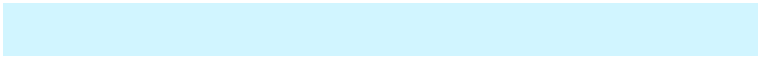
2E0A00

Inverse Universe

The Inverse Universe completely reimagines the original color for something new.



B9D3DA



D1F5FF



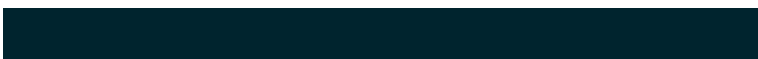
B9C3DA



636B6E



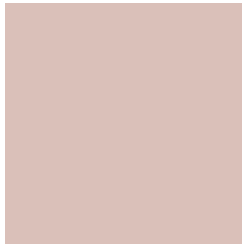
0089AD



00242E

Previews

White Background



This preview shows how the Hex color DAC0B9 looks on a white background.

Color Contrast Check

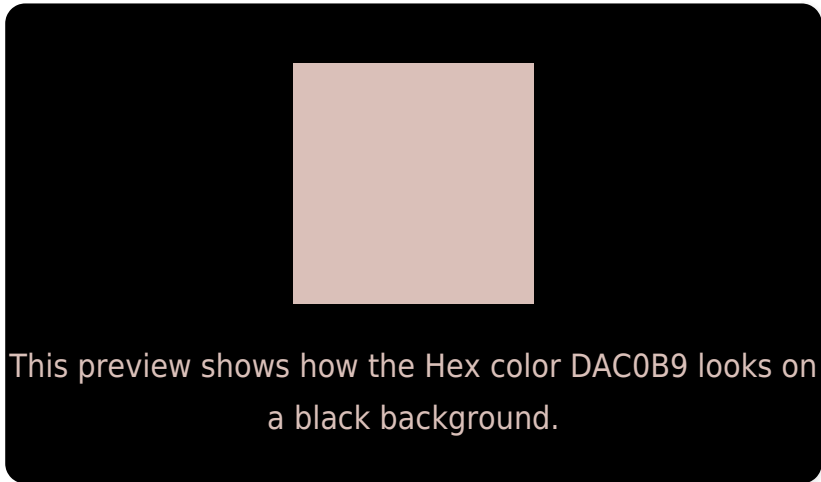
Large Text (above 18pt) WCAG AA × Fail

Any Text WCAG AA × Fail

Large Text (above 18pt) WCAG AAA × Fail

Any Text WCAG AAA × Fail

Black Background



Color Contrast Check

Large Text (above 18pt) WCAG AA ✓ Pass

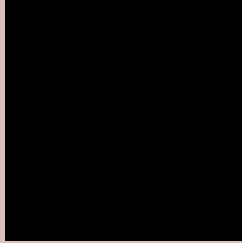
Any Text WCAG AA ✓ Pass

Large Text (above 18pt) WCAG AAA ✓ Pass

Any Text WCAG AAA ✓ Pass

If you want to check with other color combinations, try the [Color Contrast Checker](#).

Hex DAC0B9 Background



This preview shows how black text looks on a background with the Hex color DAC0B9.



This preview shows how white text looks on a background with the Hex color DAC0B9.

Color Blindness Simulation

Color vision deficiency is a very complex topic, and I could not describe the different causes any better than Wikipedia does, so if you want to learn more, you should check out their [article about color blindness](#).

Dichromacy



Original Color
DAC0B9

Protanopia
CBC5BC

Deuteranopia
DDBFB9

Trichromacy



Original Color
DAC0B9

Protanomaly
D0C3BB

Deuteranomaly
DCBFB9

Tritanomaly
DBBEC5

Monochromacy



Original Color
DAC0B9

Achromatopsia
C7C7C7

Achromatomaly
CEC4C2

CSS Examples

Text

The CSS property to change the color of the text to Hex DAC0B9 is called "color". The color property can be set on classes, ids or directly on the HTML element.

This example shows how text in the color #DAC0B9 looks like.

```
.text, #text, p{  
    color:#DAC0B9  
}
```

If you want to add a text shadow in that color use the text-shadow property, you can generate a text shadow directly with our [CSS Text Shadow Generator](#).

Here you see how black text with a 4 pixel #DAC0B9 colored shadow looks like.

```
.shadow{ text-shadow: 4px 4px 2px #DAC0B9  
}
```

Border

The CSS property to change the border of an element to Hex DAC0B9 is called "border". The border property can be set on classes, ids or directly on the HTML element.

This example shows the color as border, it can be applied via the CSS property "border" or "border-color".

```
.border, #border, table{ border:4px solid  
#DAC0B9 }
```

If only the border color should be changed use the property `border-color`.

```
.border{ border-color:#DAC0B9 }
```

If you want to add a box shadow in that color use:

Here you see how a box with a 4 pixel #DAC0B9 colored shadow looks like.

```
.boxshadow{ -moz-box-shadow:4px 4px 4px  
4px #DAC0B9; -webkit-box-shadow:4px 4px  
4px 4px #DAC0B9; box-shadow:4px 4px 4px  
4px #DAC0B9 }
```

Background

The CSS property to change the background color of an element to Hex DAC0B9 is called "background". The background property can be set on classes, ids or directly on the HTML element.

```
.background, #background, body{  
background:#DAC0B9 }
```

If only the background color should be changed can be used:

```
.background{ background-color:#DAC0B9 }
```

This example shows the color as background, it is applied via the CSS property "background".

To optimize and compress your CSS code, you can use our [online CSS compressor and optimizer](#) based on csstidy. If you want to create a linear or radial gradient as background or border, check our [CSS Gradient Generator](#).

Hey! You found this booklet interesting? Support Converting Colors with the new Membership Option!

The pro membership hides all ads, plus gives you double the colors in the color bucket, and more awesome pro features!

[Learn more, Memberships starting at \\$2.50/m!](#)

**Follow me
on Twitter!**

@ConvertingColor