

Converting Colors

Hex(DAC1B7)

Have a look what the booklet for
Hex(DAC1B7) contains.

Hex(DAC1B7)	3
<i>Conversions</i>	4
<i>Details</i>	6
<i>Harmonies</i>	11
<i>Previews</i>	23
<i>Color Blindness Simulation</i>	26
<i>CSS Examples</i>	29

Color

Hex(DAC1B7)

Conversions

Conversions Part 1

Format	Color
Hex	DAC1B7
RGB	218, 193, 183
RGB Percent	85%, 76%, 72%
CMY	0.1451, 0.2431, 0.2824
CMYK	0.00, 0.11, 0.16, 0.15
HSL	17°, 32%, 79%
HSV	17°, 16%, 85%
XYZ	56.5306, 56.4643, 52.7190
YIQ	199.3350, 18.1100, 2.1900

Conversions

Conversions Part 2

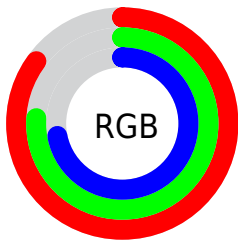
Format	Color
R _Y B	218, 197, 183
Decimal	14336439
CIE Lab	79.88, 7.22, 8.26
CIE LCh	80, 10.970, 48.828
Yxy	56.4643, 0.3411, 0.3407
Android (android.graphics.Color)	4292526519 (0xFFDAC1B7)
YUV	199.3350, -8.0532, 16.3692
Hunter-Lab	75.1427, 2.7877, 11.0029

Details

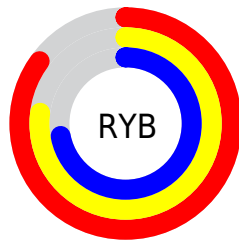
The Hex color **DAC1B7** is a light color, and the websafe version is hex **CCCCCC**. A complement of this color would be **B7D0DA**, and the grayscale version is **C7C7C7**.

A 20% lighter version of the original color is **FFF9EF**, and **A38B82** is the 20% darker color. If you saturate the color by 10%, you get **DAB1A1**, and if you desaturate by 10%, it is **DAD1CD**.

Distribution



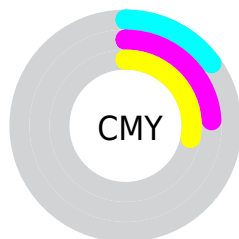
- Red (85%)
- Green (76%)
- Blue (72%)



- Red (85%)
- Yellow (77%)
- Blue (72%)



- Cyan (0%)
- Magenta (11%)
- Yellow (16%)
- Black (15%)



- Cyan (15%)
- Magenta (24%)
- Yellow (28%)

Brightness & Saturation Gradients

These gradients show how the Hex color DAC1B7 changes by changing the brightness by 10 percent. The first figure shows a shift by +10% for each color and the second figure -10%.

Similar to the brightness gradients but the following saturation gradients show a change of the Hex color DAC1B7 by changing the saturation by 10% instead.

 DAC1B7

 DAC1B7

FFFFFF

 BEA69C

 FFF9EF

 A38B82

 887269

 6F5951

 56423A

 3E2C24

 28170F

 100000

 000000

 DAC1B7

 DAC1B7

 DAB1A1

 DAD1CD

 DAA28B

 DAE0E3

 DA9276

 DAF0F8

 DA8360

 DAFFFF

 DA734A

 DA6434

 DA541E

 DA4409

 DA3E00

Harmonies

Analogous

The Analogous color harmony consists of three colors that are next to each other on the color wheel.



DCBFC0



DAC1B7



D2C4B2

Triad

The Triadic color harmony groups three colors that are evenly spaced from another and form a triangle on the color wheel.



DAC1B7



B2CCC2



C3C5D9

Complementary

The Complementary color scheme is a pair of colors which are on the opposite of each other on the color wheel.



DAC1B7



B7D0DA

Split Complementary

Split-complementary colors differ from the complementary color scheme. The scheme consists of three colors, the original color and two neighbors of the complement color.



B7C8DA



DAC1B7



ADCCCC

Square

The Square scheme is like the rectangle color scheme, but the four colors are evenly spaced on the color wheel.



DAC1B7



BCCAB8



AFCBD5



D0C2D4

Rectangle

The Rectangle color scheme consists of four colors that form a rectangle on the color wheel.



DAC1B7



CBC6B2



AFCBD5



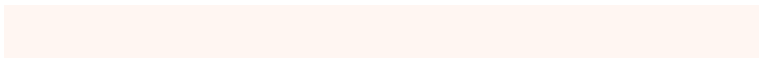
BFC6DA

Sweetspot

The Sweet Spot groups the original color and five complimentary colors.



DAC1B7



FFF6F2



DAB7D0



807A78



000000



808080

Same Dimension

The Same Dimension uses a secret algorithm to generate beautiful new colors.



DAC1B7



FFDCCF



DAD2B7



6E6663



AD3200



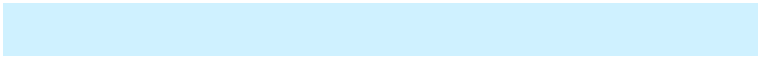
2E0D00

Inverse Universe

The Inverse Universe completely reimagines the original color for something new.



B7D0DA



CFF1FF



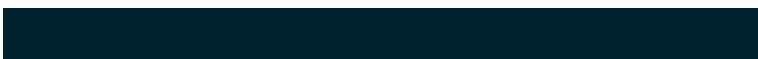
B7BFDA



636B6E



007CAD



00212E

Previews

White Background



This preview shows how the Hex color DAC1B7 looks on a white background.

Color Contrast Check

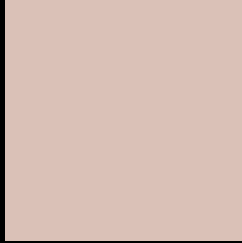
Large Text (above 18pt) WCAG AA × Fail

Any Text WCAG AA × Fail

Large Text (above 18pt) WCAG AAA × Fail

Any Text WCAG AAA × Fail

Black Background



This preview shows how the Hex color DAC1B7 looks on a black background.

Color Contrast Check

Large Text (above 18pt) WCAG AA ✓ Pass

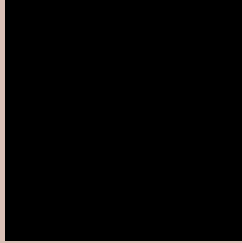
Any Text WCAG AA ✓ Pass

Large Text (above 18pt) WCAG AAA ✓ Pass

Any Text WCAG AAA ✓ Pass

If you want to check with other color combinations, try the [Color Contrast Checker](#).

Hex DAC1B7 Background



This preview shows how black text looks on a background with the Hex color DAC1B7.



This preview shows how white text looks on a background with the Hex color DAC1B7.

Color Blindness Simulation

Color vision deficiency is a very complex topic, and I could not describe the different causes any better than Wikipedia does, so if you want to learn more, you should check out their [article about color blindness](#).

Dichromacy



Original Color
DAC1B7

Protanopia
CDC5B9

Deuteranopia
DFBFB7

Trichromacy



Original Color
DAC1B7

Protanomaly
D2C4B8

Deuteranomaly
DDC0B7

Tritanomaly
DCBFC5

Monochromacy



Original Color
DAC1B7

Achromatopsia
C7C7C7

Achromatomaly
CEC5C1

CSS Examples

Text

The CSS property to change the color of the text to Hex DAC1B7 is called "color". The color property can be set on classes, ids or directly on the HTML element.

This example shows how text in the color #DAC1B7 looks like.

```
.text, #text, p{  
    color:#DAC1B7  
}
```

If you want to add a text shadow in that color use the text-shadow property, you can generate a text shadow directly with our [CSS Text Shadow Generator](#).

Here you see how black text with a 4 pixel #DAC1B7 colored shadow looks like.

```
.shadow{ text-shadow: 4px 4px 2px #DAC1B7  
}
```

Border

The CSS property to change the border of an element to Hex DAC1B7 is called "border". The border property can be set on classes, ids or directly on the HTML element.

This example shows the color as border, it can be applied via the CSS property "border" or "border-color".

```
.border, #border, table{ border:4px solid  
#DAC1B7 }
```

If only the border color should be changed use the property `border-color`.

```
.border{ border-color:#DAC1B7 }
```

If you want to add a box shadow in that color use:

Here you see how a box with a 4 pixel #DAC1B7 colored shadow looks like.

```
.boxshadow{ -moz-box-shadow:4px 4px 4px  
4px #DAC1B7; -webkit-box-shadow:4px 4px  
4px 4px #DAC1B7; box-shadow:4px 4px 4px  
4px #DAC1B7 }
```

Background

The CSS property to change the background color of an element to Hex DAC1B7 is called "background". The background property can be set on classes, ids or directly on the HTML element.

```
.background, #background, body{  
background:#DAC1B7 }
```

If only the background color should be changed can be used:

```
.background{ background-color:#DAC1B7 }
```

This example shows the color as background, it is applied via the CSS property "background".

To optimize and compress your CSS code, you can use our [online CSS compressor and optimizer](#) based on csstidy. If you want to create a linear or radial gradient as background or border, check our [CSS Gradient Generator](#).

Hey! You found this booklet interesting? Support Converting Colors with the new Membership Option!

The pro membership hides all ads, plus gives you double the colors in the color bucket, and more awesome pro features!

[Learn more, Memberships starting at \\$2.50/m!](#)

**Follow me
on Twitter!**

@ConvertingColor