

Converting Colors

Hex(DAC1C9)

Have a look what the booklet for
Hex(DAC1C9) contains.

Hex(DAC1C9)	3
<i>Conversions</i>	4
<i>Details</i>	6
<i>Harmonies</i>	11
<i>Previews</i>	23
<i>Color Blindness Simulation</i>	26
<i>CSS Examples</i>	29

Color

Hex(DAC1C9)

Conversions

Conversions Part 1

Format	Color
Hex	DAC1C9
RGB	218, 193, 201
RGB Percent	85%, 76%, 79%
CMY	0.1451, 0.2431, 0.2118
CMYK	0.00, 0.11, 0.08, 0.15
HSL	341°, 25%, 81%
HSV	341°, 11%, 85%
XYZ	58.5260, 57.2624, 63.2264
YIQ	201.3870, 12.3320, 7.7880

Conversions

Conversions Part 2

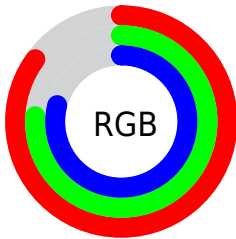
Format	Color
R _{YB}	218, 193, 201
Decimal	14336457
CIE Lab	80.33, 10.17, -0.78
CIE LCh	80, 10.204, 355.642
Yxy	57.2624, 0.3269, 0.3199
Android (android.graphics.Color)	4292526537 (0xFFDAC1C9)
YUV	201.3870, -0.1908, 14.5696
Hunter-Lab	75.6719, 5.6292, 3.4316

Details

The Hex color **DAC1C9** is a light color, and the websafe version is hex **CCCCCC**. A complement of this color would be **C1DAD2**, and the grayscale version is **C9C9C9**.

A 20% lighter version of the original color is **FFF9FF**, and **A38B93** is the 20% darker color. If you saturate the color by 10%, you get **DAABBA**, and if you desaturate by 10%, it is **DAD7D8**.

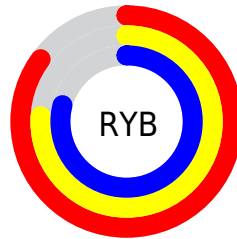
Distribution



Red (85%)

Green (76%)

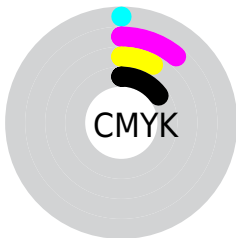
Blue (79%)



Red (85%)

Yellow (76%)

Blue (79%)

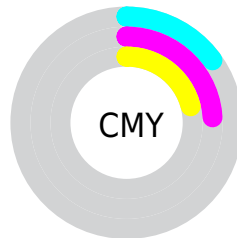


Cyan (0%)

Magenta (11%)

Yellow (8%)

Black (15%)



Cyan (15%)

Magenta (24%)

Yellow (21%)

Brightness & Saturation Gradients

These gradients show how the Hex color DAC1C9 changes by changing the brightness by 10 percent. The first figure shows a shift by +10% for each color and the second figure -10%.

Similar to the brightness gradients but the following saturation gradients show a change of the Hex color DAC1C9 by changing the saturation by 10% instead.

 DAC1C9

FFFFFF

 FFF9FF

 DAC1C9

 BEA6AE

 A38B93

 897279

 6F5961

 574249

 3F2C32

 29171D

 160004

 000000

 DAC1C9

 DAC1C9

 DAABBA

 DAD7D8

 DA95AB

 DAEDE7

 DA809D

 DAFFF5

 DA6A8E

 DAFFFF

 DA547F

 DA3E70

 DA2861

 DA1352

 DA0046

Harmonies

Analogous

The Analogous color harmony consists of three colors that are next to each other on the color wheel.



D3C3D2



DAC1C9



DCC1BF

Triad

The Triadic color harmony groups three colors that are evenly spaced from another and form a triangle on the color wheel.



DAC1C9



C6C9B6



B3CBD7

Complementary

The Complementary color scheme is a pair of colors which are on the opposite of each other on the color wheel.



DAC1C9



C1DAD2

Split Complementary

Split-complementary colors differ from the complementary color scheme. The scheme consists of three colors, the original color and two neighbors of the complement color.



B0CDCF



DAC1C9



BBCBC

Square

The Square scheme is like the rectangle color scheme, but the four colors are evenly spaced on the color wheel.



DAC1C9



D1C6B4



B3CDC5



BCC8DA

Rectangle

The Rectangle color scheme consists of four colors that form a rectangle on the color wheel.



DAC1C9



DAC2BA



B3CDC5



B1CCD4

Sweetspot

The Sweet Spot groups the original color and five complimentary colors.



DAC1C9



FFF7FA



D2C1DA



807A7C



000000



808080

Same Dimension

The Same Dimension uses a secret algorithm to generate beautiful new colors.



DAC1C9



FFDBE7



DAC5C1



6E6366



AD0037



2E000F

Inverse Universe

The Inverse Universe completely reimagines the original color for something new.



DAC1C9



FFDBE7



C1D6DA



6E6366



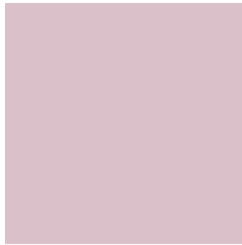
AD0037



2E000F

Previews

White Background



This preview shows how the Hex color DAC1C9 looks on a white background.

Color Contrast Check

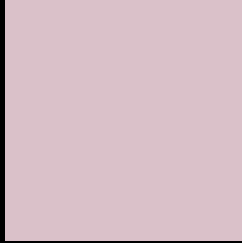
Large Text (above 18pt) WCAG AA × Fail

Any Text WCAG AA × Fail

Large Text (above 18pt) WCAG AAA × Fail

Any Text WCAG AAA × Fail

Black Background



This preview shows how the Hex color DAC1C9 looks on a black background.

Color Contrast Check

Large Text (above 18pt) WCAG AA ✓ Pass

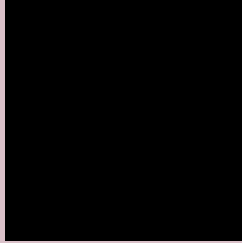
Any Text WCAG AA ✓ Pass

Large Text (above 18pt) WCAG AAA ✓ Pass

Any Text WCAG AAA ✓ Pass

If you want to check with other color combinations, try the [Color Contrast Checker](#).

Hex DAC1C9 Background



This preview shows how black text looks on a background with the Hex color DAC1C9.

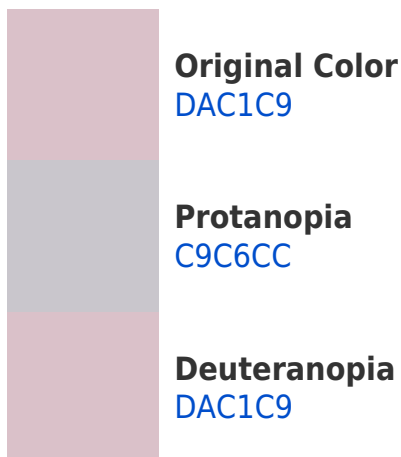


This preview shows how white text looks on a background with the Hex color DAC1C9.

Color Blindness Simulation

Color vision deficiency is a very complex topic, and I could not describe the different causes any better than Wikipedia does, so if you want to learn more, you should check out their [article about color blindness](#).

Dichromacy



Trichromacy



Original Color
DAC1C9

Protanomaly
CFC4CB

Deuteranomaly
DAC1C9

Tritanomaly
DBC0CD

Monochromacy



Original Color
DAC1C9

Achromatopsia
C9C9C9

Achromatomaly
CFC6C9

CSS Examples

Text

The CSS property to change the color of the text to Hex DAC1C9 is called "color". The color property can be set on classes, ids or directly on the HTML element.

This example shows how text in the color #DAC1C9 looks like.

```
.text, #text, p{  
    color:#DAC1C9  
}
```

If you want to add a text shadow in that color use the text-shadow property, you can generate a text shadow directly with our [CSS Text Shadow Generator](#).

Here you see how black text with a 4 pixel #DAC1C9 colored shadow looks like.

```
.shadow{ text-shadow: 4px 4px 2px #DAC1C9
}
```

Border

The CSS property to change the border of an element to Hex DAC1C9 is called "border". The border property can be set on classes, ids or directly on the HTML element.

This example shows the color as border, it can be applied via the CSS property "border" or "border-color".

```
.border, #border, table{ border:4px solid
#DAC1C9 }
```

If only the border color should be changed use the property `border-color`.

```
.border{ border-color:#DAC1C9 }
```

If you want to add a box shadow in that color use:

Here you see how a box with a 4 pixel #DAC1C9 colored shadow looks like.

```
.boxshadow{ -moz-box-shadow:4px 4px 4px  
4px #DAC1C9; -webkit-box-shadow:4px 4px  
4px 4px #DAC1C9; box-shadow:4px 4px 4px  
4px #DAC1C9 }
```

Background

The CSS property to change the background color of an element to Hex DAC1C9 is called "background". The background property can be set on classes, ids or directly on the HTML element.

```
.background, #background, body{  
background:#DAC1C9 }
```

If only the background color should be changed can be used:

```
.background{ background-color:#DAC1C9 }
```

This example shows the color as background, it is applied via the CSS property "background".

To optimize and compress your CSS code, you can use our [online CSS compressor and optimizer](#) based on csstidy. If you want to create a linear or radial gradient as background or border, check our [CSS Gradient Generator](#).

Hey! You found this booklet interesting? Support Converting Colors with the new Membership Option!

The pro membership hides all ads, plus gives you double the colors in the color bucket, and more awesome pro features!

[Learn more, Memberships starting at \\$2.50/m!](#)

**Follow me
on Twitter!**

@ConvertingColor