

Converting Colors

Hex(DAC3B5)

Have a look what the booklet for
Hex(DAC3B5) contains.

Hex(DAC3B5)	3
<i>Conversions</i>	4
<i>Details</i>	6
<i>Harmonies</i>	11
<i>Previews</i>	23
<i>Color Blindness Simulation</i>	26
<i>CSS Examples</i>	29

Color

Hex(DAC3B5)

Conversions

Conversions Part 1

Format	Color
Hex	DAC3B5
RGB	218, 195, 181
RGB Percent	85%, 76%, 71%
CMY	0.1451, 0.2353, 0.2902
CMYK	0.00, 0.11, 0.17, 0.15
HSL	23°, 33%, 78%
HSV	23°, 17%, 85%
XYZ	56.7690, 57.2718, 51.7786
YIQ	200.2810, 18.2020, 0.5220

Conversions

Conversions Part 2

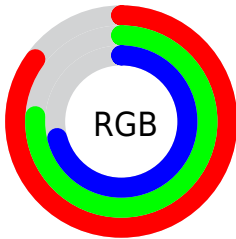
Format	Color
R _Y B	218, 204, 181
Decimal	14336949
CIE Lab	80.33, 5.85, 9.98
CIE LCh	80, 11.570, 59.620
Yxy	57.2718, 0.3424, 0.3454
Android (android.graphics.Color)	4292527029 (0xFFDAC3B5)
YUV	200.2810, -9.5055, 15.5396
Hunter-Lab	75.6782, 1.4628, 12.4088

Details

The Hex color **DAC3B5** is a light color, and the websafe version is hex **CCCCCC**. A complement of this color would be **B5CCDA**, and the grayscale version is **C8C8C8**.

A 20% lighter version of the original color is **FFFCED**, and **A38D80** is the 20% darker color. If you saturate the color by 10%, you get **DAB59F**, and if you desaturate by 10%, it is **DAD1CB**.

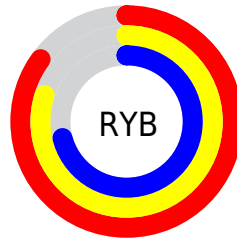
Distribution



Red (85%)

Green (76%)

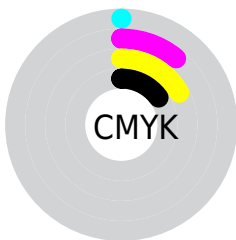
Blue (71%)



Red (85%)

Yellow (80%)

Blue (71%)

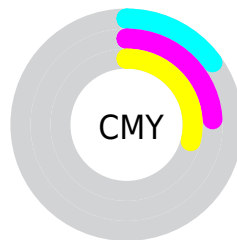


Cyan (0%)

Magenta (11%)

Yellow (17%)

Black (15%)



Cyan (15%)

Magenta (24%)

Yellow (29%)

Brightness & Saturation Gradients

These gradients show how the Hex color DAC3B5 changes by changing the brightness by 10 percent. The first figure shows a shift by +10% for each color and the second figure -10%.

Similar to the brightness gradients but the following saturation gradients show a change of the Hex color DAC3B5 by changing the saturation by 10% instead.

 DAC3B5

 DAC3B5

FFFFFF

 BEA89A

 FFFCED

 A38D80

 887467

 6F5B4F

 564438

 3E2E23

 28190D

 100000

 000000

 DAC3B5

 DAC3B5

 DAB59F

 DAD1CB

 DAA889

 DADEE1

 DA9A74

 DAECF6

 DA8D5E

 DAF9FF

 DA7F48

 DAFFFF

 DA7232

 DA641C

 DA5707

 DA5200

Harmonies

Analogous

The Analogous color harmony consists of three colors that are next to each other on the color wheel.



DFC1BD



DAC3B5



D1C6B2

Triad

The Triadic color harmony groups three colors that are evenly spaced from another and form a triangle on the color wheel.



DAC3B5



AFCEC7



C9C5DA

Complementary

The Complementary color scheme is a pair of colors which are on the opposite of each other on the color wheel.



DAC3B5



B5CCDA

Split Complementary

Split-complementary colors differ from the complementary color scheme. The scheme consists of three colors, the original color and two neighbors of the complement color.



BCC8DD



DAC3B5



ACCDD1

Square

The Square scheme is like the rectangle color scheme, but the four colors are evenly spaced on the color wheel.



DAC3B5



B8CDBC



B1CBD9



D6C2D2

Rectangle

The Rectangle color scheme consists of four colors that form a rectangle on the color wheel.



DAC3B5



C9C9B3



B1CBD9



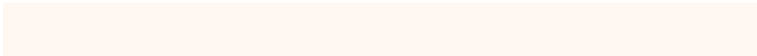
C5C6DB

Sweetspot

The Sweet Spot groups the original color and five complimentary colors.



DAC3B5



FFF7F2



DAB5CC



807B78



000000



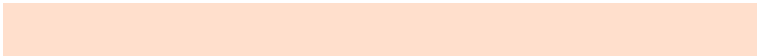
808080

Same Dimension

The Same Dimension uses a secret algorithm to generate beautiful new colors.



DAC3B5



FFDFCC



DAD5B5



6E6763



AD4200



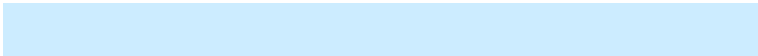
2E1100

Inverse Universe

The Inverse Universe completely reimagines the original color for something new.



B5CCDA



CCECFE



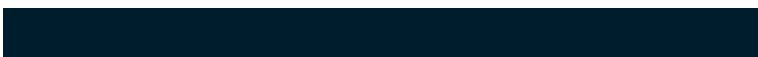
B5BADA



636A6E



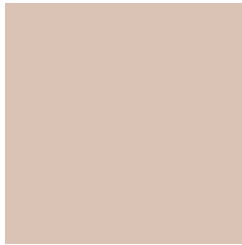
006CAD



001D2E

Previews

White Background



This preview shows how the Hex color DAC3B5 looks on a white background.

Color Contrast Check

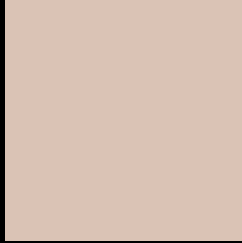
Large Text (above 18pt) WCAG AA × Fail

Any Text WCAG AA × Fail

Large Text (above 18pt) WCAG AAA × Fail

Any Text WCAG AAA × Fail

Black Background



This preview shows how the Hex color DAC3B5 looks on a black background.

Color Contrast Check

Large Text (above 18pt) WCAG AA ✓ Pass

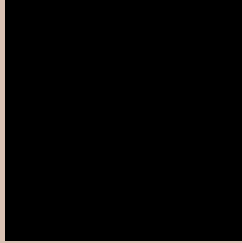
Any Text WCAG AA ✓ Pass

Large Text (above 18pt) WCAG AAA ✓ Pass

Any Text WCAG AAA ✓ Pass

If you want to check with other color combinations, try the [Color Contrast Checker](#).

Hex DAC3B5 Background



This preview shows how black text looks on a background with the Hex color DAC3B5.



This preview shows how white text looks on a background with the Hex color DAC3B5.

Color Blindness Simulation

Color vision deficiency is a very complex topic, and I could not describe the different causes any better than Wikipedia does, so if you want to learn more, you should check out their [article about color blindness](#).

Dichromacy

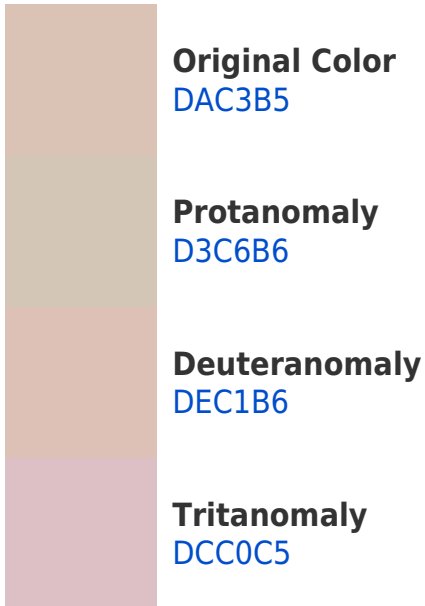


Original Color
DAC3B5

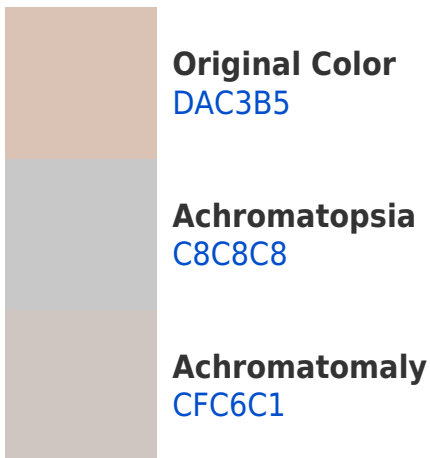
Protanopia
CFC7B7

Deuteranopia
E1C0B6

Trichromacy



Monochromacy



CSS Examples

Text

The CSS property to change the color of the text to Hex DAC3B5 is called "color". The color property can be set on classes, ids or directly on the HTML element.

This example shows how text in the color #DAC3B5 looks like.

```
.text, #text, p{  
    color:#DAC3B5  
}
```

If you want to add a text shadow in that color use the text-shadow property, you can generate a text shadow directly with our [CSS Text Shadow Generator](#).

Here you see how black text with a 4 pixel #DAC3B5 colored shadow looks like.

```
.shadow{ text-shadow: 4px 4px 2px #DAC3B5  
}
```

Border

The CSS property to change the border of an element to Hex DAC3B5 is called "border". The border property can be set on classes, ids or directly on the HTML element.

This example shows the color as border, it can be applied via the CSS property "border" or "border-color".

```
.border, #border, table{ border:4px solid  
#DAC3B5 }
```

If only the border color should be changed use the property `border-color`.

```
.border{ border-color:#DAC3B5 }
```

If you want to add a box shadow in that color use:

Here you see how a box with a 4 pixel #DAC3B5 colored shadow looks like.

```
.boxshadow{ -moz-box-shadow:4px 4px 4px  
4px #DAC3B5; -webkit-box-shadow:4px 4px  
4px 4px #DAC3B5; box-shadow:4px 4px 4px  
4px #DAC3B5 }
```

Background

The CSS property to change the background color of an element to Hex DAC3B5 is called "background". The background property can be set on classes, ids or directly on the HTML element.

```
.background, #background, body{  
background:#DAC3B5 }
```

If only the background color should be changed can be used:

```
.background{ background-color:#DAC3B5 }
```

This example shows the color as background, it is applied via the CSS property "background".

To optimize and compress your CSS code, you can use our [online CSS compressor and optimizer](#) based on csstidy. If you want to create a linear or radial gradient as background or border, check our [CSS Gradient Generator](#).

Hey! You found this booklet interesting? Support Converting Colors with the new Membership Option!

The pro membership hides all ads, plus gives you double the colors in the color bucket, and more awesome pro features!

[Learn more, Memberships starting at \\$2.50/m!](#)

**Follow me
on Twitter!**

@ConvertingColor