

Converting Colors

Hex(DAC3B7)

Have a look what the booklet for
Hex(DAC3B7) contains.

Hex(DAC3B7)	3
<i>Conversions</i>	4
<i>Details</i>	6
<i>Harmonies</i>	11
<i>Previews</i>	23
<i>Color Blindness Simulation</i>	26
<i>CSS Examples</i>	29

Color

Hex(DAC3B7)

Conversions

Conversions Part 1

Format	Color
Hex	DAC3B7
RGB	218, 195, 183
RGB Percent	85%, 76%, 72%
CMY	0.1451, 0.2353, 0.2824
CMYK	0.00, 0.11, 0.16, 0.15
HSL	21°, 32%, 79%
HSV	21°, 16%, 85%
XYZ	56.9758, 57.3545, 52.8673
YIQ	200.5090, 17.5600, 1.1440

Conversions

Conversions Part 2

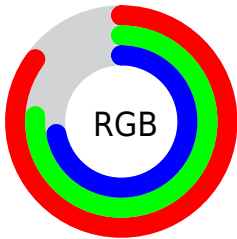
Format	Color
R _Y B	218, 201, 183
Decimal	14336951
CIE Lab	80.38, 6.16, 8.97
CIE LCh	80, 10.887, 55.526
Yxy	57.3545, 0.3408, 0.3430
Android (android.graphics.Color)	4292527031 (0xFFDAC3B7)
YUV	200.5090, -8.6319, 15.3396
Hunter-Lab	75.7328, 1.7580, 11.6239

Details

The Hex color **DAC3B7** is a light color, and the websafe version is hex **CCCCCC**. A complement of this color would be **B7CEDA**, and the grayscale version is **C9C9C9**.

A 20% lighter version of the original color is **FFFCEF**, and **A38D82** is the 20% darker color. If you saturate the color by 10%, you get **DAB5A1**, and if you desaturate by 10%, it is **DAD1CD**.

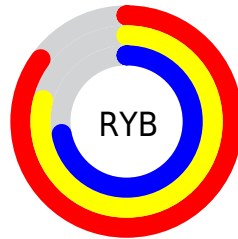
Distribution



Red (85%)

Green (76%)

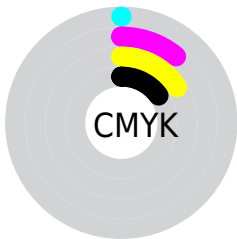
Blue (72%)



Red (85%)

Yellow (79%)

Blue (72%)

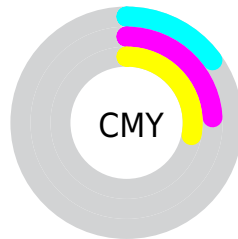


Cyan (0%)

Magenta (11%)

Yellow (16%)

Black (15%)



Cyan (15%)

Magenta (24%)

Yellow (28%)

Brightness & Saturation Gradients

These gradients show how the Hex color DAC3B7 changes by changing the brightness by 10 percent. The first figure shows a shift by +10% for each color and the second figure -10%.

Similar to the brightness gradients but the following saturation gradients show a change of the Hex color DAC3B7 by changing the saturation by 10% instead.

 DAC3B7

 DAC3B7

FFFFFF

 BEA89C

 FFFCEF

 A38D82

 887469

 6F5B51

 56443A

 3E2E24

 28190F

 110000

 000000

 DAC3B7

 DAC3B7

 DAB5A1

 DAD1CD

 DAA68B

 DAE0E3

 DA9876

 DAEEF8

 DA8A60

 DAFCFF

 DA7B4A

 DAFFFF

 DA6D34

 DA5F1E

 DA5009

 DA4B00

Harmonies

Analogous

The Analogous color harmony consists of three colors that are next to each other on the color wheel.



DEC1BF



DAC3B7



D2C6B3

Triad

The Triadic color harmony groups three colors that are evenly spaced from another and form a triangle on the color wheel.



DAC3B7



B2CDC5



C8C5DA

Complementary

The Complementary color scheme is a pair of colors which are on the opposite of each other on the color wheel.



DAC3B7



B7CEDA

Split Complementary

Split-complementary colors differ from the complementary color scheme. The scheme consists of three colors, the original color and two neighbors of the complement color.



BBC9DB



DAC3B7



AECDD0

Square

The Square scheme is like the rectangle color scheme, but the four colors are evenly spaced on the color wheel.



DAC3B7



BBCCBC



B2CCD8



D3C2D3

Rectangle

The Rectangle color scheme consists of four colors that form a rectangle on the color wheel.



DAC3B7



CAC8B4



B2CCD8



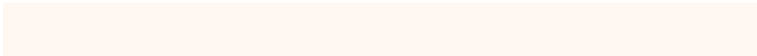
C3C6DB

Sweetspot

The Sweet Spot groups the original color and five complimentary colors.



DAC3B7



FFF7F2



DAB7CE



807A78



000000



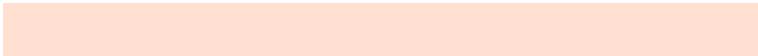
808080

Same Dimension

The Same Dimension uses a secret algorithm to generate beautiful new colors.



DAC3B7



FFDFCF



DAD4B7



6E6663



AD3B00



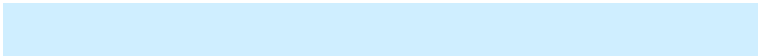
2E1000

Inverse Universe

The Inverse Universe completely reimagines the original color for something new.



B7CEDA



CFE EFF



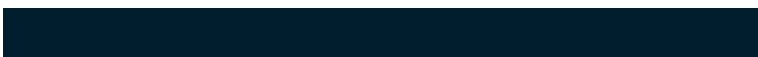
B7BD DA



636A6E



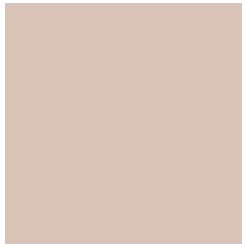
0072AD



001E2E

Previews

White Background



This preview shows how the Hex color DAC3B7 looks on a white background.

Color Contrast Check

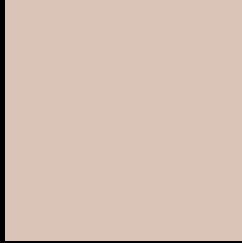
Large Text (above 18pt) WCAG AA × Fail

Any Text WCAG AA × Fail

Large Text (above 18pt) WCAG AAA × Fail

Any Text WCAG AAA × Fail

Black Background



This preview shows how the Hex color DAC3B7 looks on a black background.

Color Contrast Check

Large Text (above 18pt) WCAG AA ✓ Pass

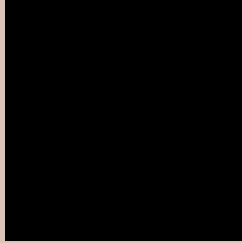
Any Text WCAG AA ✓ Pass

Large Text (above 18pt) WCAG AAA ✓ Pass

Any Text WCAG AAA ✓ Pass

If you want to check with other color combinations, try the [Color Contrast Checker](#).

Hex DAC3B7 Background



This preview shows how black text looks on a background with the Hex color DAC3B7.

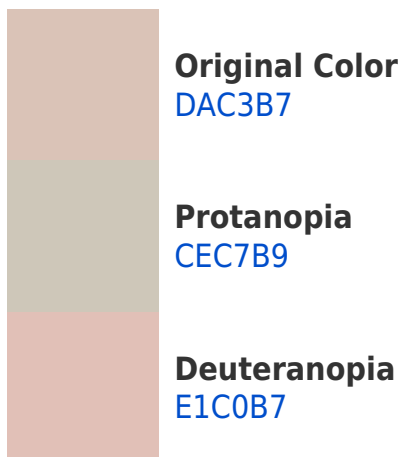


This preview shows how white text looks on a background with the Hex color DAC3B7.

Color Blindness Simulation

Color vision deficiency is a very complex topic, and I could not describe the different causes any better than Wikipedia does, so if you want to learn more, you should check out their [article about color blindness](#).

Dichromacy



Trichromacy



Original Color
DAC3B7

Protanomaly
D2C6B8

Deuteranomaly
DEC1B7

Tritanomaly
DCC0C6

Monochromacy



Original Color
DAC3B7

Achromatopsia
C9C9C9

Achromatomaly
CFC7C2

CSS Examples

Text

The CSS property to change the color of the text to Hex DAC3B7 is called "color". The color property can be set on classes, ids or directly on the HTML element.

This example shows how text in the color #DAC3B7 looks like.

```
.text, #text, p{  
    color:#DAC3B7  
}
```

If you want to add a text shadow in that color use the text-shadow property, you can generate a text shadow directly with our [CSS Text Shadow Generator](#).

Here you see how black text with a 4 pixel #DAC3B7 colored shadow looks like.

```
.shadow{ text-shadow: 4px 4px 2px #DAC3B7  
}
```

Border

The CSS property to change the border of an element to Hex DAC3B7 is called "border". The border property can be set on classes, ids or directly on the HTML element.

This example shows the color as border, it can be applied via the CSS property "border" or "border-color".

```
.border, #border, table{ border:4px solid  
#DAC3B7 }
```

If only the border color should be changed use the property `border-color`.

```
.border{ border-color:#DAC3B7 }
```

If you want to add a box shadow in that color use:

Here you see how a box with a 4 pixel #DAC3B7 colored shadow looks like.

```
.boxshadow{ -moz-box-shadow:4px 4px 4px  
4px #DAC3B7; -webkit-box-shadow:4px 4px  
4px 4px #DAC3B7; box-shadow:4px 4px 4px  
4px #DAC3B7 }
```

Background

The CSS property to change the background color of an element to Hex DAC3B7 is called "background". The background property can be set on classes, ids or directly on the HTML element.

```
.background, #background, body{  
background:#DAC3B7 }
```

If only the background color should be changed can be used:

```
.background{ background-color:#DAC3B7 }
```

This example shows the color as background, it is applied via the CSS property "background".

To optimize and compress your CSS code, you can use our [online CSS compressor and optimizer](#) based on csstidy. If you want to create a linear or radial gradient as background or border, check our [CSS Gradient Generator](#).

Hey! You found this booklet interesting? Support Converting Colors with the new Membership Option!

The pro membership hides all ads, plus gives you double the colors in the color bucket, and more awesome pro features!

[Learn more, Memberships starting at \\$2.50/m!](#)

**Follow me
on Twitter!**

@ConvertingColor