

# Converting Colors

Hex(DB2E67)

Have a look what the booklet for  
Hex(DB2E67) contains.

<b>Hex(DB2E67)</b> .....	3
<i><b>Conversions</b></i> .....	4
<i><b>Details</b></i> .....	6
<i><b>Harmonies</b></i> .....	11
<i><b>Previews</b></i> .....	23
<i><b>Color Blindness Simulation</b></i> .....	26
<i><b>CSS Examples</b></i> .....	29

# Color

**Hex(DB2E67)**

# Conversions

## Conversions Part 1

Format	Color
Hex	DB2E67
RGB	219, 46, 103
RGB Percent	86%, 18%, 40%
CMY	0.1412, 0.8196, 0.5961
CMYK	0.00, 0.79, 0.53, 0.14
HSL	340°, 71%, 52%
HSV	340°, 79%, 86%
XYZ	32.6386, 17.9933, 14.5848
YIQ	104.2250, 84.8110, 54.4030

# Conversions

## Conversions Part 2

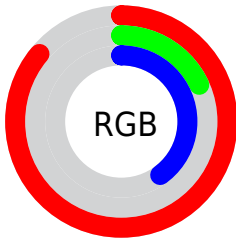
<b>Format</b>	<b>Color</b>
<a href="#">RYB</a>	219, 46, 103
Decimal	14364263
CIELab	49.49, 67.86, 10.58
CIElCh	49, 68.678, 8.861
Yxy	17.9933, 0.5005, 0.2759
Android (android.graphics.Color)	4292554343 (0xFFDB2E67)
YUV	104.2250, -0.6039, 100.6577
Hunter-Lab	42.4185, 63.1129, 9.3073

# Details

The Hex color **DB2E67** is a dark color, and the websafe version is hex **CC3366**. The color can be described as dark washed rose. A complement of this color would be **2EDBA2**, and the grayscale version is **686868**.

A 20% lighter version of the original color is **FF6D9A**, and **9D0039** is the 20% darker color. If you saturate the color by 10%, you get **DB1858**, and if you desaturate by 10%, it is **DB4476**.

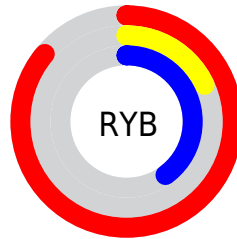
# Distribution



Red (86%)

Green (18%)

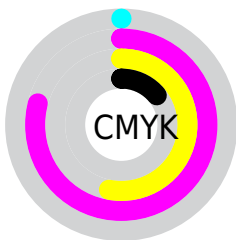
Blue (40%)



Red (86%)

Yellow (18%)

Blue (40%)

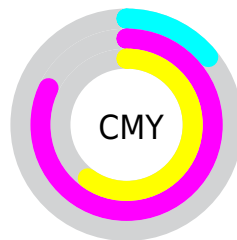


Cyan (0%)

Magenta (79%)

Yellow (53%)

Black (14%)



Cyan (14%)

Magenta (82%)

Yellow (60%)

# Brightness & Saturation Gradients

These gradients show how the Hex color DB2E67 changes by changing the brightness by 10 percent. The first figure shows a shift by +10% for each color and the second figure -10%.

Similar to the brightness gradients but the following saturation gradients show a change of the Hex color DB2E67 by changing the saturation by 10% instead.



 DB2E67

 DB2E67

FFFFFF

 BC004F

 FF6D9A

 9D0039

 FF8AB4

 7F0024

 FFA7D0

 61000E

 FFC5EC

 450003

 FFE2FF

 240001

 000000

 DB2E67

 DB2E67

 DB1858

 DB4476

 DB024A

 DB5A84

 DB0048

 DB7093

 DB86A2

 DB9CB0

 DBB1BF

 DBC7CE

 DBDDDC

 DBF3EB

# Harmonies

## Analogous

The Analogous color harmony consists of three colors that are next to each other on the color wheel.



C73DA1



DB2E67



D0462F

# Triad

The Triadic color harmony groups three colors that are evenly spaced from another and form a triangle on the color wheel.



DB2E67



3D8600



0087E3

# Complementary

The Complementary color scheme is a pair of colors which are on the opposite of each other on the color wheel.



DB2E67



2EDBA2

# Split Complementary

Split-complementary colors differ from the complementary color scheme. The scheme consists of three colors, the original color and two neighbors of the complement color.



008EBE



DB2E67



008D49

# Square

The Square scheme is like the rectangle color scheme, but the four colors are evenly spaced on the color wheel.



DB2E67



7F7900



008F86



0077EA

# Rectangle

The Rectangle color scheme consists of four colors that form a rectangle on the color wheel.



DB2E67



BC5A00



008F86



008ADA



# Sweetspot

The Sweet Spot groups the original color and five complimentary colors.



DB2E67



FFC2D6



A12EDB



805B67



000000



808080



# Same Dimension

The Same Dimension uses a secret algorithm to generate beautiful new colors.



DB2E67



FF0D5D



DB4B2E



6E6366



AD0039



2E000F



# Inverse Universe

The Inverse Universe completely reimagines the original color for something new.



DB2E67



FF0D5D



2EBEDB



6E6366



AD0039

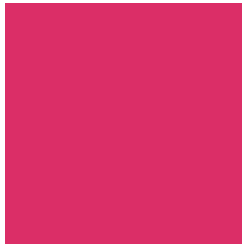


2E000F



# Previews

## White Background



This preview shows how the Hex color DB2E67 looks on a white background.

## Color Contrast Check

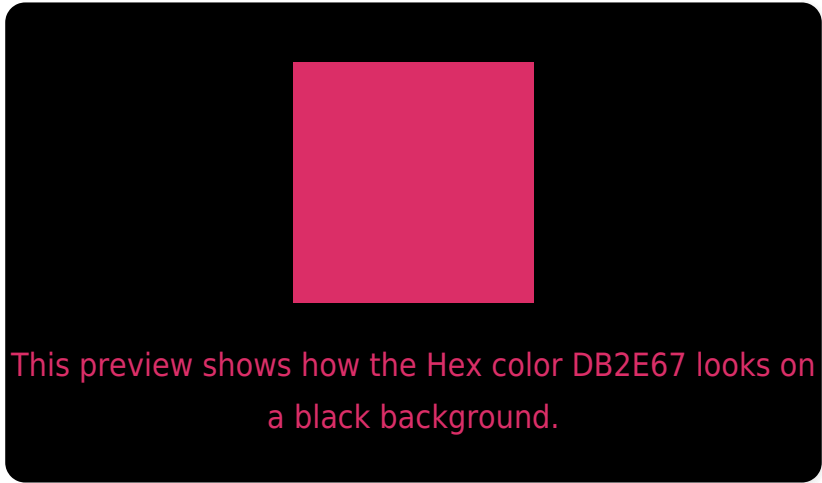
Large Text (above 18pt) WCAG AA ✓ Pass

Any Text WCAG AA ✓ Pass

Large Text (above 18pt) WCAG AAA ✓ Pass

Any Text WCAG AAA × Fail

# Black Background



## Color Contrast Check

Large Text (above 18pt) WCAG AA ✓ Pass

Any Text WCAG AA ✓ Pass

Large Text (above 18pt) WCAG AAA ✓ Pass

Any Text WCAG AAA × Fail

If you want to check with other color combinations, try the [Color Contrast Checker](#).



## Hex DB2E67 Background



This preview shows how black text looks on a background with the Hex color DB2E67.



This preview shows how white text looks on a background with the Hex color DB2E67.

# Color Blindness Simulation

Color vision deficiency is a very complex topic, and I could not describe the different causes any better than Wikipedia does, so if you want to learn more, you should check out their [article about color blindness](#).

## Dichromacy



**Original Color**  
DB2E67

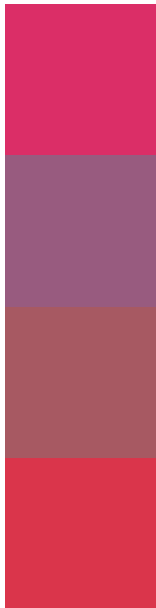
**Protanopia**  
72758C

**Deuteranopia**  
8A725F



**Tritanopia**  
D9393B

# Trichromacy



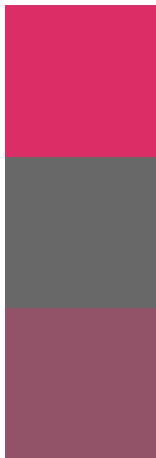
**Original Color**  
DB2E67

**Protanomaly**  
985B7F

**Deuteranomaly**  
A75962

**Tritanomaly**  
DA354B

# Monochromacy



**Original Color**  
DB2E67

**Achromatopsia**  
686868

**Achromatomaly**  
925368

# CSS Examples

## Text

The CSS property to change the color of the text to Hex DB2E67 is called "color". The color property can be set on classes, ids or directly on the HTML element.

This example shows how text in the color #DB2E67 looks like.

```
.text, #text, p{  
    color:#DB2E67  
}
```

If you want to add a text shadow in that color use the text-shadow property, you can generate a text shadow directly with our [CSS Text Shadow Generator](#).

Here you see how black text with a 4 pixel #DB2E67 colored shadow looks like.

```
.shadow{ text-shadow: 4px 4px 2px #DB2E67
}
```

## Border

The CSS property to change the border of an element to Hex DB2E67 is called "border". The border property can be set on classes, ids or directly on the HTML element.

This example shows the color as border, it can be applied via the CSS property "border" or "border-color".

```
.border, #border, table{ border:4px solid
#DB2E67 }
```

If only the border color should be changed use the property `border-color`.

```
.border{ border-color:#DB2E67 }
```

If you want to add a box shadow in that color use:

Here you see how a box with a 4 pixel #DB2E67 colored shadow looks like.

```
.boxshadow{ -moz-box-shadow:4px 4px 4px  
4px #DB2E67; -webkit-box-shadow:4px 4px  
4px 4px #DB2E67; box-shadow:4px 4px 4px  
4px #DB2E67 }
```

# Background

The CSS property to change the background color of an element to Hex DB2E67 is called "background". The background property can be set on classes, ids or directly on the HTML element.

```
.background, #background, body{  
background:#DB2E67 }
```

If only the background color should be changed can be used:

```
.background{ background-color:#DB2E67 }
```

This example shows the color as background, it is applied via the CSS property "background".

To optimize and compress your CSS code, you can use our [online CSS compressor and optimizer](#) based on csstidy. If you want to create a linear or radial gradient as background or border, check our [CSS Gradient Generator](#).



Hey! You found this booklet interesting? Support Converting Colors with the new Membership Option!

The pro membership hides all ads, plus gives you double the colors in the color bucket, and more awesome pro features!

**[Learn more, Memberships starting at \\$2.50/m!](#)**

**Follow me  
on Twitter!**

**@ConvertingColor**