

Converting Colors

Hex(DB4A6A)

Have a look what the booklet for
Hex(DB4A6A) contains.

Hex(DB4A6A)	3
<i>Conversions</i>	4
<i>Details</i>	6
<i>Harmonies</i>	11
<i>Previews</i>	23
<i>Color Blindness Simulation</i>	26
<i>CSS Examples</i>	29

Color

Hex(DB4A6A)

Conversions

Conversions Part 1

Format	Color
Hex	DB4A6A
RGB	219, 74, 106
RGB Percent	86%, 29%, 42%
CMY	0.1412, 0.7098, 0.5843
CMYK	0.00, 0.66, 0.52, 0.14
HSL	347°, 67%, 57%
HSV	347°, 66%, 86%
XYZ	34.2637, 20.9982, 15.8828
YIQ	121.0030, 76.1480, 40.6920

Conversions

Conversions Part 2

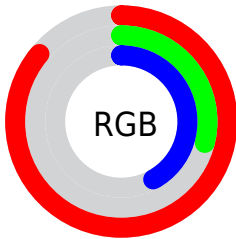
Format	Color
R_{YB}	219, 74, 106
Decimal	14371434
CIE Lab	52.95, 58.66, 13.59
CIE LCh	53, 60.218, 13.046
Yxy	20.9982, 0.4816, 0.2951
Android (android.graphics.Color)	4292561514 (0xFFDB4A6A)
YUV	121.0030, -7.3965, 85.9434
Hunter-Lab	45.8238, 53.2776, 11.5264

Details

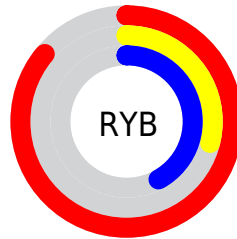
The Hex color **DB4A6A** is a dark color, and the websafe version is hex **CC3366**. The color can be described as dark muted rose. A complement of this color would be **4ADBBB**, and the grayscale version is **797979**.

A 20% lighter version of the original color is **FF829D**, and **9E003B** is the 20% darker color. If you saturate the color by 10%, you get **DB3459**, and if you desaturate by 10%, it is **DB607B**.

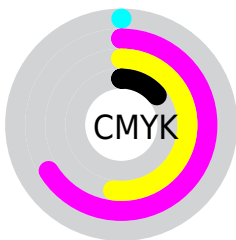
Distribution



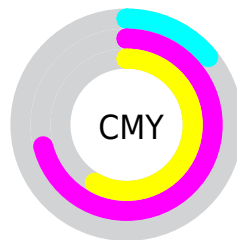
- Red (86%)
- Green (29%)
- Blue (42%)



- Red (86%)
- Yellow (29%)
- Blue (42%)



- Cyan (0%)
- Magenta (66%)
- Yellow (52%)
- Black (14%)



- Cyan (14%)
- Magenta (71%)
- Yellow (58%)

Brightness & Saturation Gradients

These gradients show how the Hex color DB4A6A changes by changing the brightness by 10 percent. The first figure shows a shift by +10% for each color and the second figure -10%.

Similar to the brightness gradients but the following saturation gradients show a change of the Hex color DB4A6A by changing the saturation by 10% instead.

 DB4A6A

 DB4A6A

FFFFFF

 BC2B52

 FF829D

 9E003B

 FF9FB8

 810026

 FFBBD3

 630012

 FFD8F0

 470002

 FFF6FF

 290001

 000000

 DB4A6A

 DB4A6A

 DB3459

 DB607B

 DB1E48

 DB768C

 DB0837

 DB8C9D

 DB0030

 DBA2AE

 DBB7BF

 DBCDD0

 DBE3E1

 DBF9F3

 DBFFFF

Harmonies

Analogous

The Analogous color harmony consists of three colors that are next to each other on the color wheel.



CC509E



DB4A6A



CF5B3A

Triad

The Triadic color harmony groups three colors that are evenly spaced from another and form a triangle on the color wheel.



DB4A6A



478E2B



008CE2

Complementary

The Complementary color scheme is a pair of colors which are on the opposite of each other on the color wheel.



DB4A6A



4ADBBB

Split Complementary

Split-complementary colors differ from the complementary color scheme. The scheme consists of three colors, the original color and two neighbors of the complement color.



0094C4



DB4A6A



00955E

Square

The Square scheme is like the rectangle color scheme, but the four colors are evenly spaced on the color wheel.



DB4A6A



828300



009694



367DE4

Rectangle

The Rectangle color scheme consists of four colors that form a rectangle on the color wheel.



DB4A6A



BC6A1C



009694



0090DA

Sweetspot

The Sweet Spot groups the original color and five complimentary colors.



DB4A6A



FFCCD7



B94ADB



806168



000000



808080

Same Dimension

The Same Dimension uses a secret algorithm to generate beautiful new colors.



DB4A6A



FF3662



DB714A



6E6365



AD0026



2E000A

Inverse Universe

The Inverse Universe completely reimagines the original color for something new.



DB4A6A



FF3662



4AB4DB



6E6365



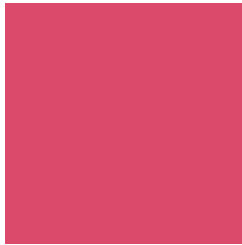
AD0026



2E000A

Previews

White Background



This preview shows how the Hex color DB4A6A looks on a white background.

Color Contrast Check

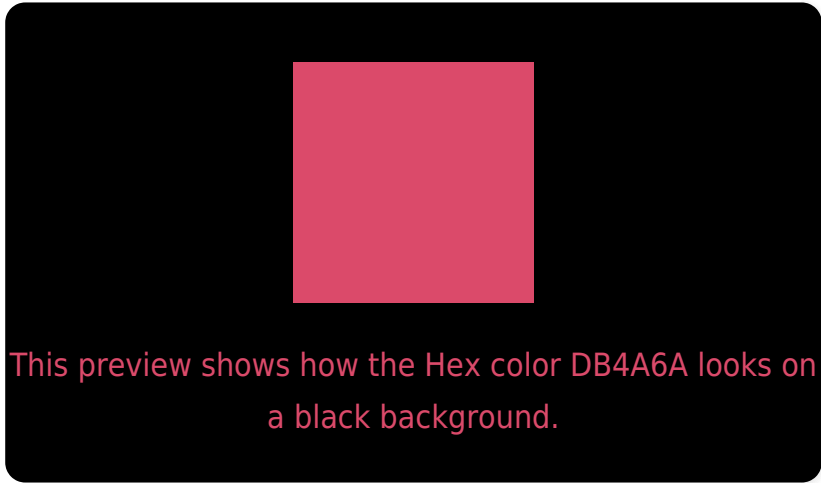
Large Text (above 18pt) WCAG AA ✓ Pass

Any Text WCAG AA × Fail

Large Text (above 18pt) WCAG AAA × Fail

Any Text WCAG AAA × Fail

Black Background



Color Contrast Check

Large Text (above 18pt) WCAG AA ✓ Pass

Any Text WCAG AA ✓ Pass

Large Text (above 18pt) WCAG AAA ✓ Pass

Any Text WCAG AAA × Fail

If you want to check with other color combinations, try the [Color Contrast Checker](#).

Hex DB4A6A Background



This preview shows how black text looks on a background with the Hex color DB4A6A.

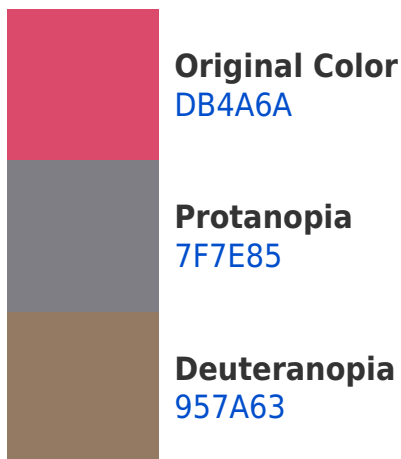


This preview shows how white text looks on a background with the Hex color DB4A6A.

Color Blindness Simulation

Color vision deficiency is a very complex topic, and I could not describe the different causes any better than Wikipedia does, so if you want to learn more, you should check out their [article about color blindness](#).

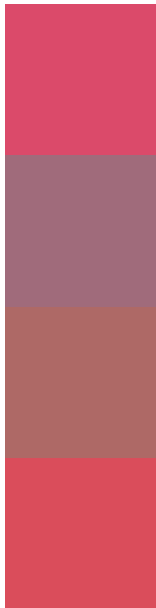
Dichromacy





Tritanopia
DA4E53

Trichromacy



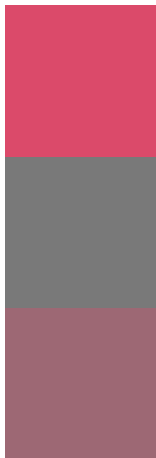
Original Color
DB4A6A

Protanomaly
A06B7B

Deuteranomaly
AE6966

Tritanomaly
DA4D5B

Monochromacy



Original Color
DB4A6A

Achromatopsia
797979

Achromatomaly
9D6874

CSS Examples

Text

The CSS property to change the color of the text to Hex DB4A6A is called "color". The color property can be set on classes, ids or directly on the HTML element.

This example shows how text in the color #DB4A6A looks like.

```
.text, #text, p{  
    color:#DB4A6A  
}
```

If you want to add a text shadow in that color use the text-shadow property, you can generate a text shadow directly with our [CSS Text Shadow Generator](#).

Here you see how black text with a 4 pixel #DB4A6A colored shadow looks like.

```
.shadow{ text-shadow: 4px 4px 2px #DB4A6A
}
```

Border

The CSS property to change the border of an element to Hex DB4A6A is called "border". The border property can be set on classes, ids or directly on the HTML element.

This example shows the color as border, it can be applied via the CSS property "border" or "border-color".

```
.border, #border, table{ border:4px solid
#DB4A6A }
```

If only the border color should be changed use the property `border-color`.

```
.border{ border-color:#DB4A6A }
```

If you want to add a box shadow in that color use:

Here you see how a box with a 4 pixel #DB4A6A colored shadow looks like.

```
.boxshadow{ -moz-box-shadow:4px 4px 4px  
4px #DB4A6A; -webkit-box-shadow:4px 4px  
4px 4px #DB4A6A; box-shadow:4px 4px 4px  
4px #DB4A6A }
```

Background

The CSS property to change the background color of an element to Hex DB4A6A is called "background". The background property can be set on classes, ids or directly on the HTML element.

```
.background, #background, body{  
background:#DB4A6A }
```

If only the background color should be changed can be used:

```
.background{ background-color:#DB4A6A }
```

This example shows the color as background, it is applied via the CSS property "background".

To optimize and compress your CSS code, you can use our [online CSS compressor and optimizer](#) based on csstidy. If you want to create a linear or radial gradient as background or border, check our [CSS Gradient Generator](#).

Hey! You found this booklet interesting? Support Converting Colors with the new Membership Option!

The pro membership hides all ads, plus gives you double the colors in the color bucket, and more awesome pro features!

[Learn more, Memberships starting at \\$2.50/m!](#)

**Follow me
on Twitter!**

@ConvertingColor