

# Converting Colors

Hex(DB4B7F)

Have a look what the booklet for  
Hex(DB4B7F) contains.

<b>Hex(DB4B7F)</b> .....	3
<i><b>Conversions</b></i> .....	4
<i><b>Details</b></i> .....	6
<i><b>Harmonies</b></i> .....	11
<i><b>Previews</b></i> .....	23
<i><b>Color Blindness Simulation</b></i> .....	26
<i><b>CSS Examples</b></i> .....	29

# Color

**Hex(DB4B7F)**

# Conversions

## Conversions Part 1

<b>Format</b>	<b>Color</b>
Hex	DB4B7F
RGB	219, 75, 127
RGB Percent	86%, 29%, 50%
CMY	0.1412, 0.7059, 0.5020
CMYK	0.00, 0.66, 0.42, 0.14
HSL	338°, 67%, 58%
HSV	338°, 66%, 86%
XYZ	35.5603, 21.6245, 22.3784
YIQ	123.9840, 69.1320, 46.7000

# Conversions

## Conversions Part 2

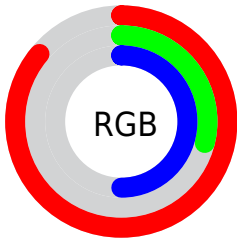
<b>Format</b>	<b>Color</b>
<b>R<sub>YB</sub></b>	219, 75, 127
Decimal	14371711
CIE <sub>Lab</sub>	53.63, 60.17, 2.02
CIE <sub>LCh</sub>	54, 60.205, 1.920
Yxy	21.6245, 0.4469, 0.2718
Android (android.graphics.Color)	4292561791 (0xFFDB4B7F)
YUV	123.9840, 1.4869, 83.3290
Hunter-Lab	46.5022, 55.1203, 4.0192

# Details

The Hex color **DB4B7F** is a dark color, and the websafe version is hex **CC3366**. The color can be described as middle muted rose. A complement of this color would be **4BDBA7**, and the grayscale version is **7C7C7C**.

A 20% lighter version of the original color is **FF84B4**, and **9F004E** is the 20% darker color. If you saturate the color by 10%, you get **DB3571**, and if you desaturate by 10%, it is **DB618D**.

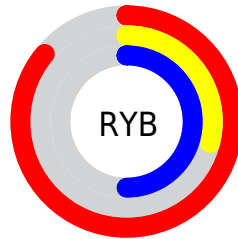
# Distribution



Red (86%)

Green (29%)

Blue (50%)



Red (86%)

Yellow (29%)

Blue (50%)

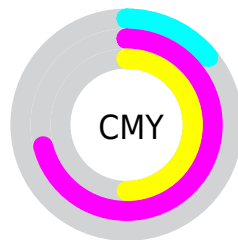


Cyan (0%)

Magenta (66%)

Yellow (42%)

Black (14%)



Cyan (14%)

Magenta (71%)

Yellow (50%)

# Brightness & Saturation Gradients

These gradients show how the Hex color DB4B7F changes by changing the brightness by 10 percent. The first figure shows a shift by +10% for each color and the second figure -10%.

Similar to the brightness gradients but the following saturation gradients show a change of the Hex color DB4B7F by changing the saturation by 10% instead.



 DB4B7F

 DB4B7F

FFFFFF

 BD2C66

 FF84B4

 9F004E

 FFA0CF

 820038

 FFBDEB

 650023

 FFDAFF

 49000C

 FFF7FF

 2D0001

 000000

 DB4B7F

 DB4B7F

 DB3571

 DB618D

 DB1F63

 DB779B

 DB0955

 DB8DA9

 DB004F

 DBA3B7

 DBB8C5

 DBCED3

 DBE4E1

 DBFAEF

 DBFFFD

# Harmonies

## Analogous

The Analogous color harmony consists of three colors that are next to each other on the color wheel.



C159B2



DB4B7F



D8554C

# Triad

The Triadic color harmony groups three colors that are evenly spaced from another and form a triangle on the color wheel.



DB4B7F



628D1B



0092DB

# Complementary

The Complementary color scheme is a pair of colors which are on the opposite of each other on the color wheel.



DB4B7F



4BDBA7

# Split Complementary

Split-complementary colors differ from the complementary color scheme. The scheme consists of three colors, the original color and two neighbors of the complement color.



0097B6



DB4B7F



00954C

# Square

The Square scheme is like the rectangle color scheme, but the four colors are evenly spaced on the color wheel.



DB4B7F



967F00



009882



0085E8

# Rectangle

The Rectangle color scheme consists of four colors that form a rectangle on the color wheel.



DB4B7F



C9632E



009882



0094D1



# Sweetspot

The Sweet Spot groups the original color and five complimentary colors.



DB4B7F



FFCCDE



A64BDB



80616C



000000



808080



# Same Dimension

The Same Dimension uses a secret algorithm to generate beautiful new colors.



DB4B7F



FF367E



DB5E4B



6E6367



AD003F



2E0011



# Inverse Universe

The Inverse Universe completely reimagines the original color for something new.



DB4B7F



FF367E



4BC8DB



6E6367



AD003F



2E0011



# Previews

## White Background



This preview shows how the Hex color DB4B7F looks on a white background.

## Color Contrast Check

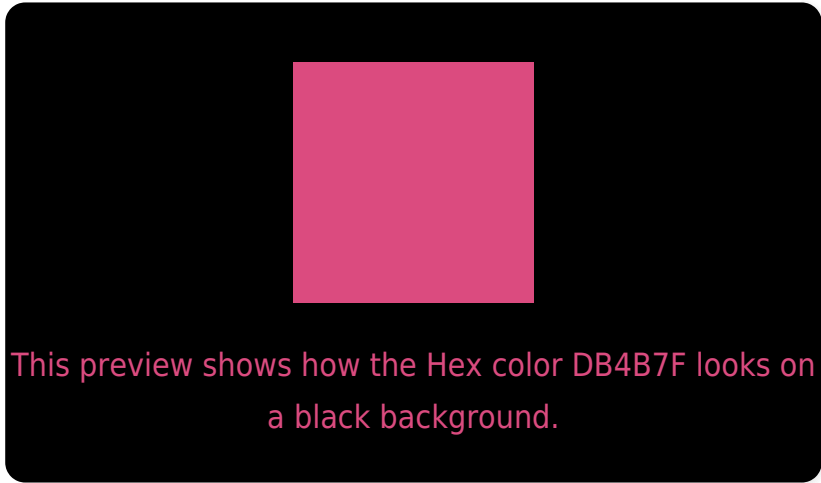
Large Text (above 18pt) WCAG AA ✓ Pass

Any Text WCAG AA × Fail

Large Text (above 18pt) WCAG AAA × Fail

Any Text WCAG AAA × Fail

# Black Background



## Color Contrast Check

Large Text (above 18pt) WCAG AA ✓ Pass

Any Text WCAG AA ✓ Pass

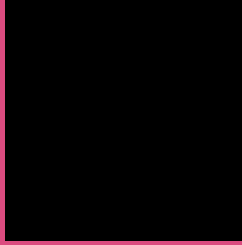
Large Text (above 18pt) WCAG AAA ✓ Pass

Any Text WCAG AAA × Fail

If you want to check with other color combinations, try the [Color Contrast Checker](#).



## Hex DB4B7F Background



This preview shows how black text looks on a background with the Hex color DB4B7F.




This preview shows how white text looks on a background with the Hex color DB4B7F.

# Color Blindness Simulation

Color vision deficiency is a very complex topic, and I could not describe the different causes any better than Wikipedia does, so if you want to learn more, you should check out their [article about color blindness](#).

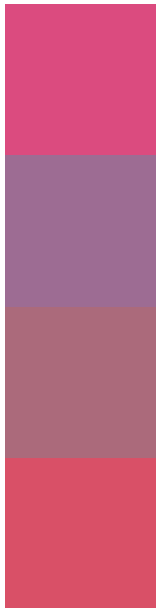
## Dichromacy





**Tritanopia**  
D85359

# Trichromacy



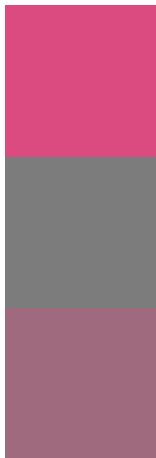
**Original Color**  
DB4B7F

**Protanomaly**  
9D6C93

**Deuteranomaly**  
AB6A7B

**Tritanomaly**  
D95067

# Monochromacy



**Original Color**  
DB4B7F

**Achromatopsia**  
7C7C7C

**Achromatomaly**  
9F6A7D

# CSS Examples

## Text

The CSS property to change the color of the text to Hex DB4B7F is called "color". The color property can be set on classes, ids or directly on the HTML element.

This example shows how text in the color #DB4B7F looks like.

```
.text, #text, p{  
    color:#DB4B7F  
}
```

If you want to add a text shadow in that color use the text-shadow property, you can generate a text shadow directly with our [CSS Text Shadow Generator](#).

Here you see how black text with a 4 pixel #DB4B7F colored shadow looks like.

```
.shadow{ text-shadow: 4px 4px 2px #DB4B7F
}
```

## Border

The CSS property to change the border of an element to Hex DB4B7F is called "border". The border property can be set on classes, ids or directly on the HTML element.

This example shows the color as border, it can be applied via the CSS property "border" or "border-color".

```
.border, #border, table{ border:4px solid
#DB4B7F }
```

If only the border color should be changed use the property `border-color`.

```
.border{ border-color:#DB4B7F }
```

If you want to add a box shadow in that color use:

Here you see how a box with a 4 pixel #DB4B7F colored shadow looks like.

```
.boxshadow{ -moz-box-shadow:4px 4px 4px  
4px #DB4B7F; -webkit-box-shadow:4px 4px  
4px 4px #DB4B7F; box-shadow:4px 4px 4px  
4px #DB4B7F }
```

# Background

The CSS property to change the background color of an element to Hex DB4B7F is called "background". The background property can be set on classes, ids or directly on the HTML element.

```
.background, #background, body{  
background:#DB4B7F }
```

If only the background color should be changed can be used:

```
.background{ background-color:#DB4B7F }
```

This example shows the color as background, it is applied via the CSS property "background".

To optimize and compress your CSS code, you can use our [online CSS compressor and optimizer](#) based on csstidy. If you want to create a linear or radial gradient as background or border, check our [CSS Gradient Generator](#).



Hey! You found this booklet interesting? Support Converting Colors with the new Membership Option!

The pro membership hides all ads, plus gives you double the colors in the color bucket, and more awesome pro features!

**[Learn more, Memberships starting at \\$2.50/m!](#)**

**Follow me  
on Twitter!**

@ConvertingColor