

Converting Colors

Hex(DB4C6A)

Have a look what the booklet for
Hex(DB4C6A) contains.

| | |
|--|----|
| Hex(DB4C6A) | 3 |
| <i>Conversions</i> | 4 |
| <i>Details</i> | 6 |
| <i>Harmonies</i> | 11 |
| <i>Previews</i> | 23 |
| <i>Color Blindness Simulation</i> | 26 |
| <i>CSS Examples</i> | 29 |

Color

Hex(DB4C6A)

Conversions

Conversions Part 1

| Format | Color |
|---------------|----------------------------|
| Hex | DB4C6A |
| RGB | 219, 76, 106 |
| RGB Percent | 86%, 30%, 42% |
| CMY | 0.1412, 0.7020, 0.5843 |
| CMYK | 0.00, 0.65, 0.52, 0.14 |
| HSL | 347°, 67%, 58% |
| HSV | 347°, 65%, 86% |
| XYZ | 34.3994, 21.2696, 15.9281 |
| YIQ | 122.1770, 75.5980, 39.6460 |

Conversions

Conversions Part 2

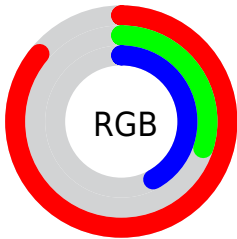
| Format | Color |
|-------------------------------------|-------------------------------|
| R_{YB} | 219, 76, 106 |
| Decimal | 14371946 |
| CIE Lab | 53.24, 57.86, 14.00 |
| CIE LCh | 53, 59.529, 13.606 |
| Yxy | 21.2696, 0.4805, 0.2971 |
| Android (android.graphics.Color) | 4292562026 (0xFFDB4C6A) |
| YUV | 122.1770, -7.9753, 84.9138 |
| Hunter-Lab | 46.1189, 52.4322, 11.8063 |

Details

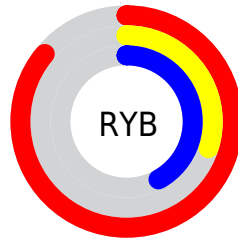
The Hex color **DB4C6A** is a dark color, and the websafe version is hex **CC3366**. The color can be described as dark muted rose. A complement of this color would be **4CDBBD**, and the grayscale version is **7A7A7A**.

A 20% lighter version of the original color is **FF849D**, and **9E013B** is the 20% darker color. If you saturate the color by 10%, you get **DB3659**, and if you desaturate by 10%, it is **DB627B**.

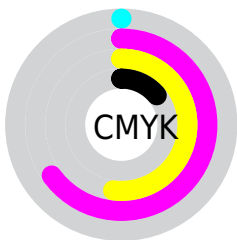
Distribution



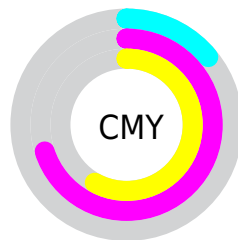
- Red (86%)
- Green (30%)
- Blue (42%)



- Red (86%)
- Yellow (30%)
- Blue (42%)



- Cyan (0%)
- Magenta (65%)
- Yellow (52%)
- Black (14%)



- Cyan (14%)
- Magenta (70%)
- Yellow (58%)

Brightness & Saturation Gradients

These gradients show how the Hex color DB4C6A changes by changing the brightness by 10 percent. The first figure shows a shift by +10% for each color and the second figure -10%.

Similar to the brightness gradients but the following saturation gradients show a change of the Hex color DB4C6A by changing the saturation by 10% instead.

 DB4C6A

 DB4C6A

FFFFFF

 BD2E52

 FF849D

 9E013B

 FFA0B8

 810026

 FFBDD3

 630012

 FFDAF0

 470001

 FFF7FF

 2A0001

 000000

 DB4C6A

 DB4C6A

 DB3659

 DB627B

 DB2047

 DB788D

 DB0A36

 DB8E9E

 DB002E

 DBA4AF

 DBBAC1

 DBCFD2

 DBE5E3

 DBFBF4

 DBFFFF

Harmonies

Analogous

The Analogous color harmony consists of three colors that are next to each other on the color wheel.



CD519D



DB4C6A



CF5C3A

Triad

The Triadic color harmony groups three colors that are evenly spaced from another and form a triangle on the color wheel.



DB4C6A



478F2E



008DE2

Complementary

The Complementary color scheme is a pair of colors which are on the opposite of each other on the color wheel.



DB4C6A



4CDBBD

Split Complementary

Split-complementary colors differ from the complementary color scheme. The scheme consists of three colors, the original color and two neighbors of the complement color.



0095C5



DB4C6A



009560

Square

The Square scheme is like the rectangle color scheme, but the four colors are evenly spaced on the color wheel.



DB4C6A



828400



009796



3D7DE3

Rectangle

The Rectangle color scheme consists of four colors that form a rectangle on the color wheel.



DB4C6A



BB6B1D



009796



0090DB

Sweetspot

The Sweet Spot groups the original color and five complimentary colors.



DB4C6A



FFCCD7



BC4CDB



806167



000000



808080

Same Dimension

The Same Dimension uses a secret algorithm to generate beautiful new colors.



DB4C6A



FF3862



DB754C



6E6365



AD0024



2E000A

Inverse Universe

The Inverse Universe completely reimagines the original color for something new.



DB4C6A



FF3862



4CB2DB



6E6365



AD0024



2E000A

Previews

White Background



This preview shows how the Hex color DB4C6A looks on a white background.

Color Contrast Check

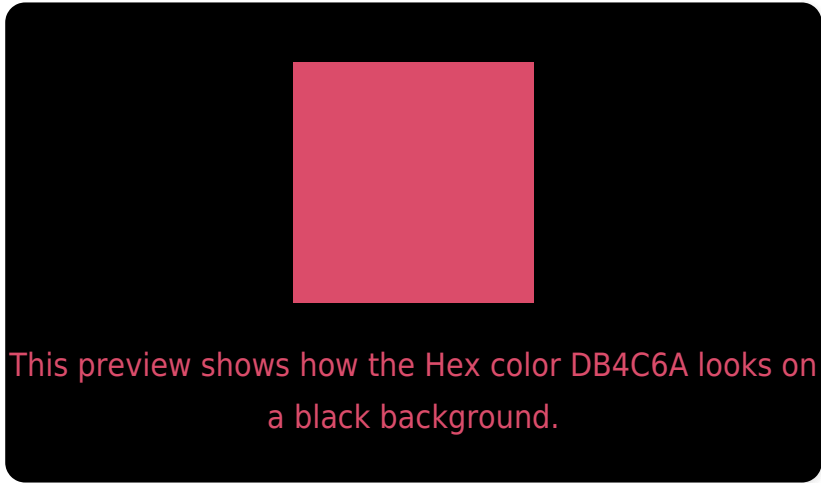
Large Text (above 18pt) WCAG AA ✓ Pass

Any Text WCAG AA × Fail

Large Text (above 18pt) WCAG AAA × Fail

Any Text WCAG AAA × Fail

Black Background



Color Contrast Check

Large Text (above 18pt) WCAG AA ✓ Pass

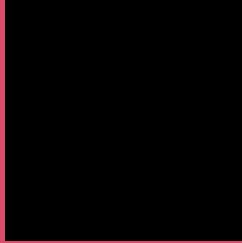
Any Text WCAG AA ✓ Pass

Large Text (above 18pt) WCAG AAA ✓ Pass

Any Text WCAG AAA × Fail

If you want to check with other color combinations, try the [Color Contrast Checker](#).

Hex DB4C6A Background



This preview shows how black text looks on a background with the Hex color DB4C6A.

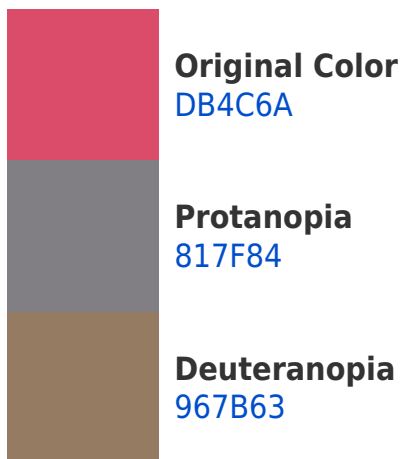


This preview shows how white text looks on a background with the Hex color DB4C6A.

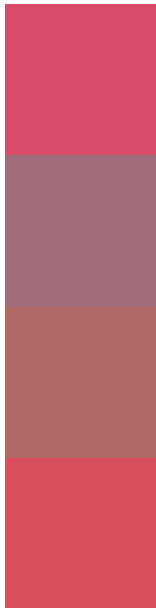
Color Blindness Simulation

Color vision deficiency is a very complex topic, and I could not describe the different causes any better than Wikipedia does, so if you want to learn more, you should check out their [article about color blindness](#).

Dichromacy



Trichromacy



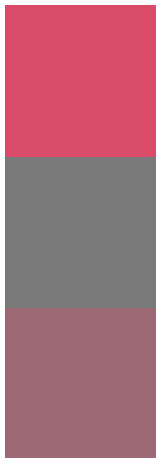
Original Color
DB4C6A

Protanomaly
A26C7B

Deuteranomaly
AF6A66

Tritanomaly
DA4F5D

Monochromacy



Original Color
DB4C6A

Achromatopsia
7A7A7A

Achromatomaly
9D6974

CSS Examples

Text

The CSS property to change the color of the text to Hex DB4C6A is called "color". The color property can be set on classes, ids or directly on the HTML element.

This example shows how text in the color #DB4C6A looks like.

```
.text, #text, p{  
    color:#DB4C6A  
}
```

If you want to add a text shadow in that color use the text-shadow property, you can generate a text shadow directly with our [CSS Text Shadow Generator](#).

Here you see how black text with a 4 pixel #DB4C6A colored shadow looks like.

```
.shadow{ text-shadow: 4px 4px 2px #DB4C6A
}
```

Border

The CSS property to change the border of an element to Hex DB4C6A is called "border". The border property can be set on classes, ids or directly on the HTML element.

This example shows the color as border, it can be applied via the CSS property "border" or "border-color".

```
.border, #border, table{ border:4px solid
#DB4C6A }
```

If only the border color should be changed use the property `border-color`.

```
.border{ border-color:#DB4C6A }
```

If you want to add a box shadow in that color use:

Here you see how a box with a 4 pixel #DB4C6A colored shadow looks like.

```
.boxshadow{ -moz-box-shadow:4px 4px 4px  
4px #DB4C6A; -webkit-box-shadow:4px 4px  
4px 4px #DB4C6A; box-shadow:4px 4px 4px  
4px #DB4C6A }
```

Background

The CSS property to change the background color of an element to Hex DB4C6A is called "background". The background property can be set on classes, ids or directly on the HTML element.

```
.background, #background, body{  
background:#DB4C6A }
```

If only the background color should be changed can be used:

```
.background{ background-color:#DB4C6A }
```

This example shows the color as background, it is applied via the CSS property "background".

To optimize and compress your CSS code, you can use our [online CSS compressor and optimizer](#) based on csstidy. If you want to create a linear or radial gradient as background or border, check our [CSS Gradient Generator](#).

Hey! You found this booklet interesting? Support Converting Colors with the new Membership Option!

The pro membership hides all ads, plus gives you double the colors in the color bucket, and more awesome pro features!

[Learn more, Memberships starting at \\$2.50/m!](#)

**Follow me
on Twitter!**

@ConvertingColor