

Converting Colors

Hex(DB4C79)

Have a look what the booklet for
Hex(DB4C79) contains.

Hex(DB4C79)	3
<i>Conversions</i>	4
<i>Details</i>	6
<i>Harmonies</i>	11
<i>Previews</i>	23
<i>Color Blindness Simulation</i>	26
<i>CSS Examples</i>	29

Color

Hex(DB4C79)

Conversions

Conversions Part 1

Format	Color
Hex	DB4C79
RGB	219, 76, 121
RGB Percent	86%, 30%, 47%
CMY	0.1412, 0.7020, 0.5255
CMYK	0.00, 0.65, 0.45, 0.14
HSL	341°, 67%, 58%
HSV	341°, 65%, 86%
XYZ	35.2490, 21.6094, 20.4024
YIQ	123.8870, 70.7830, 44.3110

Conversions

Conversions Part 2

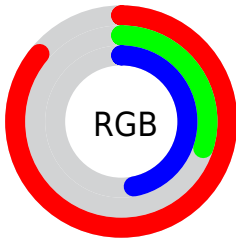
Format	Color
R_{YB}	219, 76, 121
Decimal	14371961
CIE _{Lab}	53.61, 59.19, 5.57
CIE _{LCh}	54, 59.448, 5.377
Yxy	21.6094, 0.4562, 0.2797
Android (android.graphics.Color)	4292562041 (0xFFDB4C79)
YUV	123.8870, -1.4233, 83.4141
Hunter-Lab	46.4859, 54.0014, 6.5182

Details

The Hex color **DB4C79** is a dark color, and the websafe version is hex **CC3366**. The color can be described as middle muted rose. A complement of this color would be **4CDBAE**, and the grayscale version is **7C7C7C**.

A 20% lighter version of the original color is **FF84AD**, and **9F0049** is the 20% darker color. If you saturate the color by 10%, you get **DB366A**, and if you desaturate by 10%, it is **DB6288**.

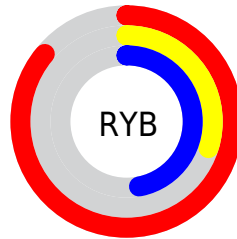
Distribution



Red (86%)

Green (30%)

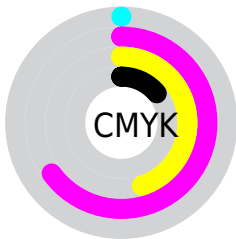
Blue (47%)



Red (86%)

Yellow (30%)

Blue (47%)

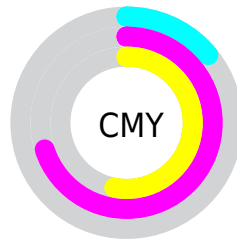


Cyan (0%)

Magenta (65%)

Yellow (45%)

Black (14%)



Cyan (14%)

Magenta (70%)

Yellow (53%)

Brightness & Saturation Gradients

These gradients show how the Hex color DB4C79 changes by changing the brightness by 10 percent. The first figure shows a shift by +10% for each color and the second figure -10%.

Similar to the brightness gradients but the following saturation gradients show a change of the Hex color DB4C79 by changing the saturation by 10% instead.

 DB4C79

 DB4C79

FFFFFF

 BD2E60

 FF84AD

 9F0049

 FFA1C8

 820033

 FFBDE4

 64001E

 FFDAFF

 490003

 FFF8FF

 2C0001

 000000

 DB4C79

 DB4C79

 DB366A

 DB6288

 DB205B

 DB7897

 DB0A4C

 DB8EA6

 DB0045

 DBA4B5

 DBBAC4

 DBCFD3

 DBE5E2

 DBFBF1

 DBFFFF

Harmonies

Analogous

The Analogous color harmony consists of three colors that are next to each other on the color wheel.



C557AC



DB4C79



D55848

Triad

The Triadic color harmony groups three colors that are evenly spaced from another and form a triangle on the color wheel.



DB4C79



5B8E23



0091DD

Complementary

The Complementary color scheme is a pair of colors which are on the opposite of each other on the color wheel.



DB4C79



4CDBAE

Split Complementary

Split-complementary colors differ from the complementary color scheme. The scheme consists of three colors, the original color and two neighbors of the complement color.



0097BA



DB4C79



009553

Square

The Square scheme is like the rectangle color scheme, but the four colors are evenly spaced on the color wheel.



DB4C79



918100



009888



0083E7

Rectangle

The Rectangle color scheme consists of four colors that form a rectangle on the color wheel.



DB4C79



C5662A



009888



0093D4

Sweetspot

The Sweet Spot groups the original color and five complimentary colors.



DB4C79



FFCCDC



AE4CDB



80616B



000000



808080

Same Dimension

The Same Dimension uses a secret algorithm to generate beautiful new colors.



DB4C79



FF3877



DB664C



6E6366



AD0037



2E000E

Inverse Universe

The Inverse Universe completely reimagines the original color for something new.



DB4C79



FF3877



4CC1DB



6E6366



AD0037



2E000E

Previews

White Background



This preview shows how the Hex color DB4C79 looks on a white background.

Color Contrast Check

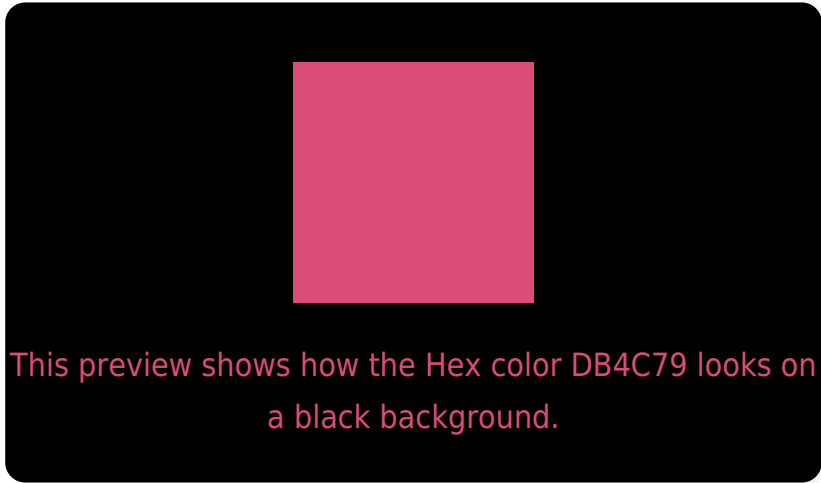
Large Text (above 18pt) WCAG AA ✓ Pass

Any Text WCAG AA × Fail

Large Text (above 18pt) WCAG AAA × Fail

Any Text WCAG AAA × Fail

Black Background



Color Contrast Check

Large Text (above 18pt) WCAG AA ✓ Pass

Any Text WCAG AA ✓ Pass

Large Text (above 18pt) WCAG AAA ✓ Pass

Any Text WCAG AAA × Fail

If you want to check with other color combinations, try the [Color Contrast Checker](#).

Hex DB4C79 Background



This preview shows how black text looks on a background with the Hex color DB4C79.

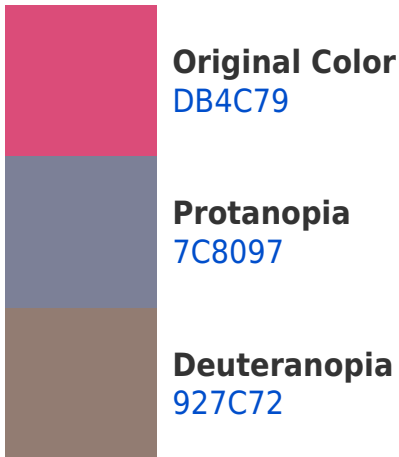


This preview shows how white text looks on a background with the Hex color DB4C79.

Color Blindness Simulation

Color vision deficiency is a very complex topic, and I could not describe the different causes any better than Wikipedia does, so if you want to learn more, you should check out their [article about color blindness](#).

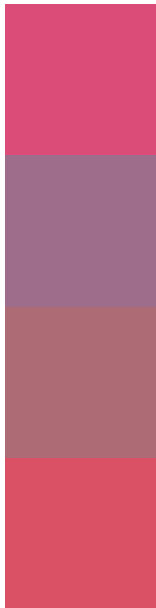
Dichromacy





Tritanopia
D95358

Trichromacy



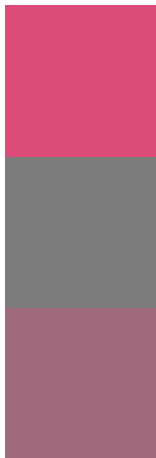
Original Color
DB4C79

Protanomaly
9F6D8C

Deuteranomaly
AD6B75

Tritanomaly
DA5064

Monochromacy



Original Color
DB4C79

Achromatopsia
7C7C7C

Achromatomaly
9F6B7B

CSS Examples

Text

The CSS property to change the color of the text to Hex DB4C79 is called "color". The color property can be set on classes, ids or directly on the HTML element.

This example shows how text in the color #DB4C79 looks like.

```
.text, #text, p{  
    color:#DB4C79  
}
```

If you want to add a text shadow in that color use the text-shadow property, you can generate a text shadow directly with our [CSS Text Shadow Generator](#).

Here you see how black text with a 4 pixel #DB4C79 colored shadow looks like.

```
.shadow{ text-shadow: 4px 4px 2px #DB4C79
}
```

Border

The CSS property to change the border of an element to Hex DB4C79 is called "border". The border property can be set on classes, ids or directly on the HTML element.

This example shows the color as border, it can be applied via the CSS property "border" or "border-color".

```
.border, #border, table{ border:4px solid
#DB4C79 }
```

If only the border color should be changed use the property `border-color`.

```
.border{ border-color:#DB4C79 }
```

If you want to add a box shadow in that color use:

Here you see how a box with a 4 pixel #DB4C79 colored shadow looks like.

```
.boxshadow{ -moz-box-shadow:4px 4px 4px  
4px #DB4C79; -webkit-box-shadow:4px 4px  
4px 4px #DB4C79; box-shadow:4px 4px 4px  
4px #DB4C79 }
```

Background

The CSS property to change the background color of an element to Hex DB4C79 is called "background". The background property can be set on classes, ids or directly on the HTML element.

```
.background, #background, body{  
background:#DB4C79 }
```

If only the background color should be changed can be used:

```
.background{ background-color:#DB4C79 }
```

This example shows the color as background, it is applied via the CSS property "background".

To optimize and compress your CSS code, you can use our [online CSS compressor and optimizer](#) based on csstidy. If you want to create a linear or radial gradient as background or border, check our [CSS Gradient Generator](#).

Hey! You found this booklet interesting? Support Converting Colors with the new Membership Option!

The pro membership hides all ads, plus gives you double the colors in the color bucket, and more awesome pro features!

[Learn more, Memberships starting at \\$2.50/m!](#)

**Follow me
on Twitter!**

@ConvertingColor