

Converting Colors

Hex(DB4D6C)

Have a look what the booklet for
Hex(DB4D6C) contains.

Hex(DB4D6C)	3
<i>Conversions</i>	4
<i>Details</i>	6
<i>Harmonies</i>	11
<i>Previews</i>	23
<i>Color Blindness Simulation</i>	26
<i>CSS Examples</i>	29

Color

Hex(DB4D6C)

Conversions

Conversions Part 1

Format	Color
Hex	DB4D6C
RGB	219, 77, 108
RGB Percent	86%, 30%, 42%
CMY	0.1412, 0.6980, 0.5765
CMYK	0.00, 0.65, 0.51, 0.14
HSL	347°, 66%, 58%
HSV	347°, 65%, 86%
XYZ	34.5741, 21.4505, 16.5055
YIQ	122.9920, 74.6810, 39.7450

Conversions

Conversions Part 2

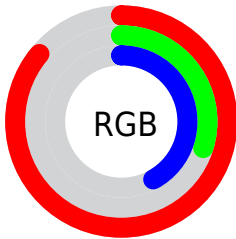
Format	Color
R_{YB}	219, 77, 108
Decimal	14372204
CIE _{Lab}	53.44, 57.62, 13.08
CIE _{LCh}	53, 59.083, 12.793
Yxy	21.4505, 0.4767, 0.2957
Android (android.graphics.Color)	4292562284 (0xFFDB4D6C)
YUV	122.9920, -7.3911, 84.1990
Hunter-Lab	46.3147, 52.2000, 11.2908

Details

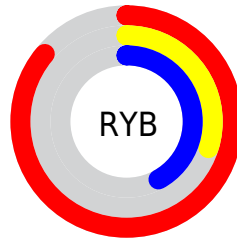
The Hex color **DB4D6C** is a dark color, and the websafe version is hex **CC3366**. The color can be described as dark muted rose. A complement of this color would be **4DDBBC**, and the grayscale version is **7B7B7B**.

A 20% lighter version of the original color is **FF859F**, and **9F043D** is the 20% darker color. If you saturate the color by 10%, you get **DB375B**, and if you desaturate by 10%, it is **DB637D**.

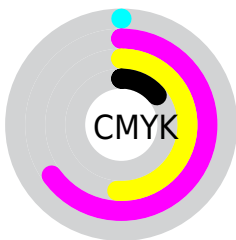
Distribution



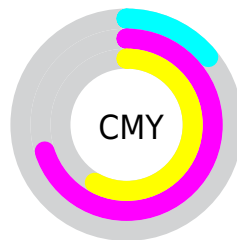
- Red (86%)
- Green (30%)
- Blue (42%)



- Red (86%)
- Yellow (30%)
- Blue (42%)



- Cyan (0%)
- Magenta (65%)
- Yellow (51%)
- Black (14%)



- Cyan (14%)
- Magenta (70%)
- Yellow (58%)

Brightness & Saturation Gradients

These gradients show how the Hex color DB4D6C changes by changing the brightness by 10 percent. The first figure shows a shift by +10% for each color and the second figure -10%.

Similar to the brightness gradients but the following saturation gradients show a change of the Hex color DB4D6C by changing the saturation by 10% instead.

 DB4D6C

 DB4D6C

FFFFFF

 BD2F54

 FF859F

 9F043D

 FFA1BA

 810028

 FFBED6

 640014

 FFDBF2

 470001

 FFF8FF

 2A0001

 000000

 DB4D6C

 DB4D6C

 DB375B

 DB637D

 DB214A

 DB798E

 DB0B39

 DB8F9F

 DB0030

 DBA5B0

 DBBAC2

 DBD0D3

 DBE6E4

 DBFCF5

 DBFFFF

Harmonies

Analogous

The Analogous color harmony consists of three colors that are next to each other on the color wheel.



CC529F



DB4D6C



D05D3C

Triad

The Triadic color harmony groups three colors that are evenly spaced from another and form a triangle on the color wheel.



DB4D6C



4A8F2E



008DE1

Complementary

The Complementary color scheme is a pair of colors which are on the opposite of each other on the color wheel.



DB4D6C



4DDBBC

Split Complementary

Split-complementary colors differ from the complementary color scheme. The scheme consists of three colors, the original color and two neighbors of the complement color.



0095C4



DB4D6C



009660

Square

The Square scheme is like the rectangle color scheme, but the four colors are evenly spaced on the color wheel.



DB4D6C



848402



009795



3A7EE3

Rectangle

The Rectangle color scheme consists of four colors that form a rectangle on the color wheel.



DB4D6C



BD6B20



009795



0091DA

Sweetspot

The Sweet Spot groups the original color and five complimentary colors.



DB4D6C



FFCFD9



BA4DDB



806269



000000



808080

Same Dimension

The Same Dimension uses a secret algorithm to generate beautiful new colors.



DB4D6C



FF3864



DB734D



6E6365



AD0026



2E000A

Inverse Universe

The Inverse Universe completely reimagines the original color for something new.



DB4D6C



FF3864



4DB5DB



6E6365



AD0026



2E000A

Previews

White Background



This preview shows how the Hex color DB4D6C looks on a white background.

Color Contrast Check

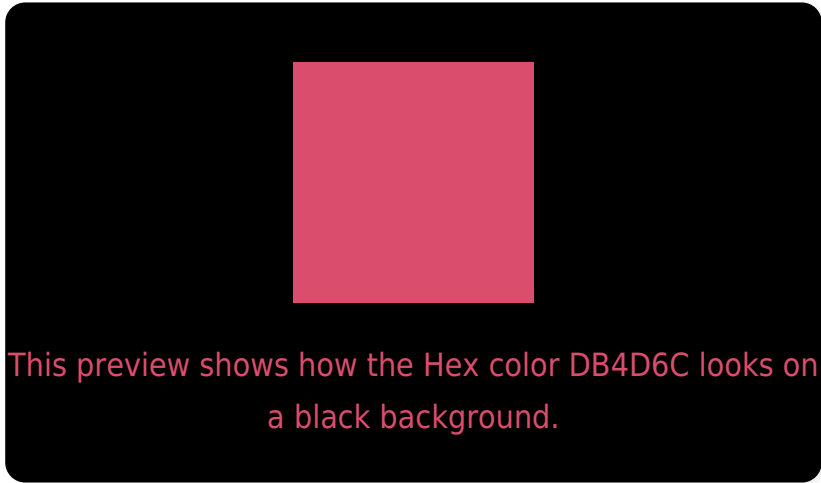
Large Text (above 18pt) WCAG AA ✓ Pass

Any Text WCAG AA × Fail

Large Text (above 18pt) WCAG AAA × Fail

Any Text WCAG AAA × Fail

Black Background



Color Contrast Check

Large Text (above 18pt) WCAG AA ✓ Pass

Any Text WCAG AA ✓ Pass

Large Text (above 18pt) WCAG AAA ✓ Pass

Any Text WCAG AAA × Fail

If you want to check with other color combinations, try the [Color Contrast Checker](#).

Hex DB4D6C Background



This preview shows how black text looks on a background with the Hex color DB4D6C.



This preview shows how white text looks on a background with the Hex color DB4D6C.

Color Blindness Simulation

Color vision deficiency is a very complex topic, and I could not describe the different causes any better than Wikipedia does, so if you want to learn more, you should check out their [article about color blindness](#).

Dichromacy

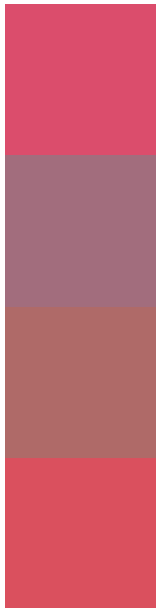


Original Color
DB4D6C

Protanopia
817F86

Deuteranopia
967B65

Trichromacy



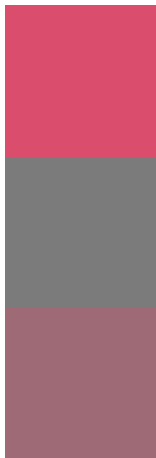
Original Color
DB4D6C

Protanomaly
A26D7D

Deuteranomaly
AF6A68

Tritanomaly
DA505E

Monochromacy



Original Color
DB4D6C

Achromatopsia
7B7B7B

Achromatomaly
9E6A76

CSS Examples

Text

The CSS property to change the color of the text to Hex DB4D6C is called "color". The color property can be set on classes, ids or directly on the HTML element.

This example shows how text in the color #DB4D6C looks like.

```
.text, #text, p{  
    color:#DB4D6C  
}
```

If you want to add a text shadow in that color use the text-shadow property, you can generate a text shadow directly with our [CSS Text Shadow Generator](#).

Here you see how black text with a 4 pixel #DB4D6C colored shadow looks like.

```
.shadow{ text-shadow: 4px 4px 2px #DB4D6C
}
```

Border

The CSS property to change the border of an element to Hex DB4D6C is called "border". The border property can be set on classes, ids or directly on the HTML element.

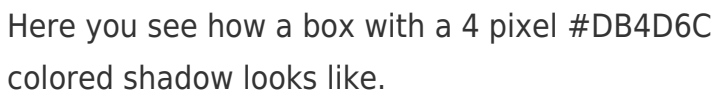
This example shows the color as border, it can be applied via the CSS property "border" or "border-color".

```
.border, #border, table{ border:4px solid
#DB4D6C }
```

If only the border color should be changed use the property `border-color`.

```
.border{ border-color:#DB4D6C }
```

If you want to add a box shadow in that color use:



Here you see how a box with a 4 pixel #DB4D6C colored shadow looks like.

```
.boxshadow{ -moz-box-shadow:4px 4px 4px  
4px #DB4D6C; -webkit-box-shadow:4px 4px  
4px 4px #DB4D6C; box-shadow:4px 4px 4px  
4px #DB4D6C }
```

Background

The CSS property to change the background color of an element to Hex DB4D6C is called "background". The background property can be set on classes, ids or directly on the HTML element.

```
.background, #background, body{  
background:#DB4D6C }
```

If only the background color should be changed can be used:

```
.background{ background-color:#DB4D6C }
```

This example shows the color as background, it is applied via the CSS property "background".

To optimize and compress your CSS code, you can use our [online CSS compressor and optimizer](#) based on csstidy. If you want to create a linear or radial gradient as background or border, check our [CSS Gradient Generator](#).

Hey! You found this booklet interesting? Support Converting Colors with the new Membership Option!

The pro membership hides all ads, plus gives you double the colors in the color bucket, and more awesome pro features!

[Learn more, Memberships starting at \\$2.50/m!](#)

**Follow me
on Twitter!**

@ConvertingColor