

Converting Colors

Hex(DB617F)

Have a look what the booklet for
Hex(DB617F) contains.

Hex(DB617F)	3
<i>Conversions</i>	4
<i>Details</i>	6
<i>Harmonies</i>	11
<i>Previews</i>	23
<i>Color Blindness Simulation</i>	26
<i>CSS Examples</i>	29

Color

Hex(DB617F)

Conversions

Conversions Part 1

Format	Color
Hex	DB617F
RGB	219, 97, 127
RGB Percent	86%, 38%, 50%
CMY	0.1412, 0.6196, 0.5020
CMYK	0.00, 0.56, 0.42, 0.14
HSL	345°, 63%, 62%
HSV	345°, 56%, 86%
XYZ	37.3189, 25.1418, 22.9646
YIQ	136.8980, 63.0820, 35.1940

Conversions

Conversions Part 2

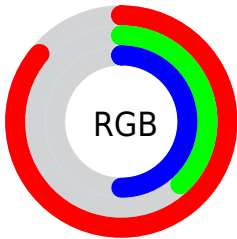
Format	Color
R_{YB}	219, 97, 127
Decimal	14377343
CIE _{Lab}	57.21, 50.55, 7.18
CIE _{LCh}	57, 51.061, 8.083
Yxy	25.1418, 0.4369, 0.2943
Android (android.graphics.Color)	4292567423 (0xFFDB617F)
YUV	136.8980, -4.8797, 72.0035
Hunter-Lab	50.1416, 45.1045, 7.9446

Details

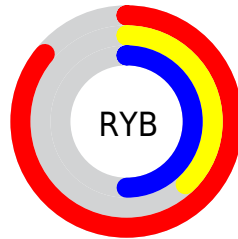
The Hex color **DB617F** is a dark color, and the websafe version is hex **FF6699**. A complement of this color would be **61DBBD**, and the grayscale version is **898989**.

A 20% lighter version of the original color is **FF98B4**, and **A02A4E** is the 20% darker color. If you saturate the color by 10%, you get **DB4B6E**, and if you desaturate by 10%, it is **DB7790**.

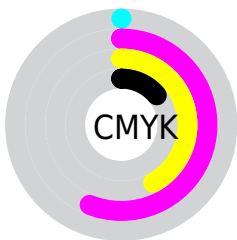
Distribution



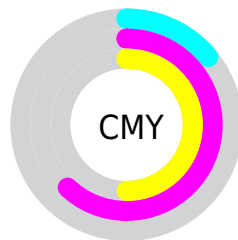
- Red (86%)
- Green (38%)
- Blue (50%)



- Red (86%)
- Yellow (38%)
- Blue (50%)



- Cyan (0%)
- Magenta (56%)
- Yellow (42%)
- Black (14%)



- Cyan (14%)
- Magenta (62%)
- Yellow (50%)

Brightness & Saturation Gradients

These gradients show how the Hex color DB617F changes by changing the brightness by 10 percent. The first figure shows a shift by +10% for each color and the second figure -10%.

Similar to the brightness gradients but the following saturation gradients show a change of the Hex color DB617F by changing the saturation by 10% instead.

 DB617F

 DB617F

FFFFFF

 BD4666

 FF98B4

 A02A4E

 FFB3CF

 830338

 FFD0EB

 670022

 FFEDFF

 4B000C

 310002

 000000

 DB617F

 DB617F

 DB4B6E

 DB7790

 DB355E

 DB8DA0

 DB1F4D

 DBA3B1

 DB093D

 DBB9C1

 DB0036

 DBCFD2

 DBE4E2

 DBFAF3

 DBFFFF

Harmonies

Analogous

The Analogous color harmony consists of three colors that are next to each other on the color wheel.



C967AC



DB617F



D56A55

Triad

The Triadic color harmony groups three colors that are evenly spaced from another and form a triangle on the color wheel.



DB617F



67963F



0097DC

Complementary

The Complementary color scheme is a pair of colors which are on the opposite of each other on the color wheel.



DB617F



61DBBD

Split Complementary

Split-complementary colors differ from the complementary color scheme. The scheme consists of three colors, the original color and two neighbors of the complement color.



009EBF



DB617F



109D66

Square

The Square scheme is like the rectangle color scheme, but the four colors are evenly spaced on the color wheel.



DB617F



968B2A



009F94



498AE2

Rectangle

The Rectangle color scheme consists of four colors that form a rectangle on the color wheel.



DB617F



C6753E



009F94



009AD4

Sweetspot

The Sweet Spot groups the original color and five complimentary colors.



DB617F



FFD4DE



BD61DB



80666C



000000



808080

Same Dimension

The Same Dimension uses a secret algorithm to generate beautiful new colors.



DB617F



FF547E



DB7F61



6E6365



AD002B



2E000B

Inverse Universe

The Inverse Universe completely reimagines the original color for something new.



DB617F



FF547E



61BDDB



6E6365



AD002B



2E000B

Previews

White Background



This preview shows how the Hex color DB617F looks on a white background.

Color Contrast Check

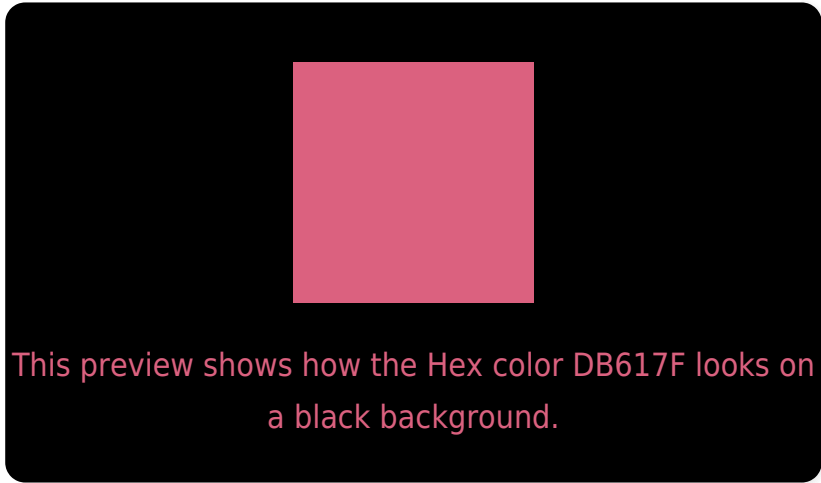
Large Text (above 18pt) WCAG AA ✓ Pass

Any Text WCAG AA × Fail

Large Text (above 18pt) WCAG AAA × Fail

Any Text WCAG AAA × Fail

Black Background



Color Contrast Check

Large Text (above 18pt) WCAG AA ✓ Pass

Any Text WCAG AA ✓ Pass

Large Text (above 18pt) WCAG AAA ✓ Pass

Any Text WCAG AAA × Fail

If you want to check with other color combinations, try the [Color Contrast Checker](#).

Hex DB617F Background



This preview shows how black text looks on a background with the Hex color DB617F.



This preview shows how white text looks on a background with the Hex color DB617F.

Color Blindness Simulation

Color vision deficiency is a very complex topic, and I could not describe the different causes any better than Wikipedia does, so if you want to learn more, you should check out their [article about color blindness](#).

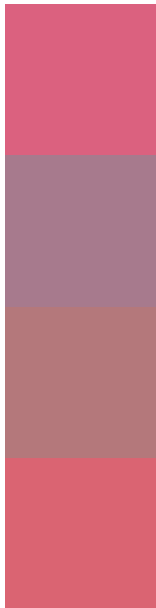
Dichromacy





Tritanopia
DA656B

Trichromacy



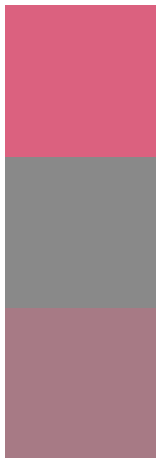
Original Color
DB617F

Protanomaly
A77A8D

Deuteranomaly
B4787B

Tritanomaly
DA6472

Monochromacy



Original Color
DB617F

Achromatopsia
898989

Achromatomaly
A77A85

CSS Examples

Text

The CSS property to change the color of the text to Hex DB617F is called "color". The color property can be set on classes, ids or directly on the HTML element.

This example shows how text in the color #DB617F looks like.

```
.text, #text, p{  
    color:#DB617F  
}
```

If you want to add a text shadow in that color use the text-shadow property, you can generate a text shadow directly with our [CSS Text Shadow Generator](#).

Here you see how black text with a 4 pixel #DB617F colored shadow looks like.

```
.shadow{ text-shadow: 4px 4px 2px #DB617F
}
```

Border

The CSS property to change the border of an element to Hex DB617F is called "border". The border property can be set on classes, ids or directly on the HTML element.

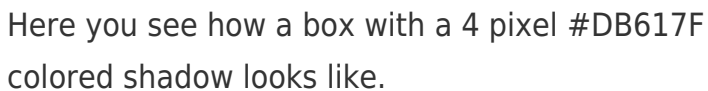
This example shows the color as border, it can be applied via the CSS property "border" or "border-color".

```
.border, #border, table{ border:4px solid
#DB617F }
```

If only the border color should be changed use the property `border-color`.

```
.border{ border-color:#DB617F }
```

If you want to add a box shadow in that color use:



Here you see how a box with a 4 pixel #DB617F colored shadow looks like.

```
.boxshadow{ -moz-box-shadow:4px 4px 4px  
4px #DB617F; -webkit-box-shadow:4px 4px  
4px 4px #DB617F; box-shadow:4px 4px 4px  
4px #DB617F }
```

Background

The CSS property to change the background color of an element to Hex DB617F is called "background". The background property can be set on classes, ids or directly on the HTML element.

```
.background, #background, body{  
background:#DB617F }
```

If only the background color should be changed can be used:

```
.background{ background-color:#DB617F }
```

This example shows the color as background, it is applied via the CSS property "background".

To optimize and compress your CSS code, you can use our [online CSS compressor and optimizer](#) based on csstidy. If you want to create a linear or radial gradient as background or border, check our [CSS Gradient Generator](#).

Hey! You found this booklet interesting? Support Converting Colors with the new Membership Option!

The pro membership hides all ads, plus gives you double the colors in the color bucket, and more awesome pro features!

[Learn more, Memberships starting at \\$2.50/m!](#)

**Follow me
on Twitter!**

@ConvertingColor