

Converting Colors

Hex(DB6D69)

Have a look what the booklet for
Hex(DB6D69) contains.

| | |
|--|----|
| Hex(DB6D69) | 3 |
| <i>Conversions</i> | 4 |
| <i>Details</i> | 6 |
| <i>Harmonies</i> | 11 |
| <i>Previews</i> | 23 |
| <i>Color Blindness Simulation</i> | 26 |
| <i>CSS Examples</i> | 29 |

Color

Hex(DB6D69)

Conversions

Conversions Part 1

| Format | Color |
|---------------|----------------------------|
| Hex | DB6D69 |
| RGB | 219, 109, 105 |
| RGB Percent | 86%, 43%, 41% |
| CMY | 0.1412, 0.5725, 0.5882 |
| CMYK | 0.00, 0.50, 0.52, 0.14 |
| HSL | 2°, 61%, 64% |
| HSV | 2°, 52%, 86% |
| XYZ | 37.2319, 27.0173, 16.6171 |
| YIQ | 141.4340, 66.8440, 22.0760 |

Conversions

Conversions Part 2

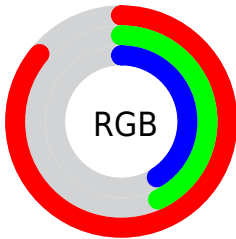
| Format | Color |
|-------------------------------------|--------------------------------|
| R _Y B | 219, 109, 105 |
| Decimal | 14380393 |
| CIE Lab | 58.99, 42.61, 22.41 |
| CIE LCh | 59, 48.145, 27.746 |
| Yxy | 27.0173, 0.4604, 0.3341 |
| Android (android.graphics.Color) | 4292570473 (0xFFDB6D69) |
| YUV | 141.4340, -17.9620, 68.0254 |
| Hunter-Lab | 51.9781, 36.8975, 17.4300 |

Details

The Hex color **DB6D69** is a dark color, and the websafe version is hex **CC6666**. A complement of this color would be **69D7DB**, and the grayscale version is **8E8E8E**.

A 20% lighter version of the original color is **FFA39C**, and **A0393A** is the 20% darker color. If you saturate the color by 10%, you get **DB5853**, and if you desaturate by 10%, it is **DB827F**.

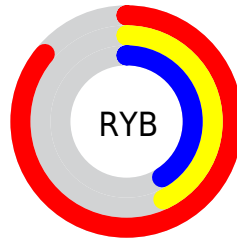
Distribution



Red (86%)

Green (43%)

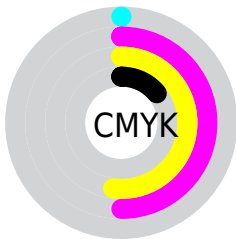
Blue (41%)



Red (86%)

Yellow (43%)

Blue (41%)

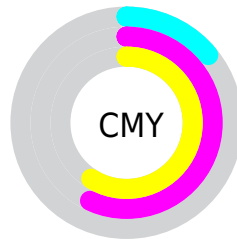


Cyan (0%)

Magenta (50%)

Yellow (52%)

Black (14%)



Cyan (14%)

Magenta (57%)

Yellow (59%)

Brightness & Saturation Gradients

These gradients show how the Hex color DB6D69 changes by changing the brightness by 10 percent. The first figure shows a shift by +10% for each color and the second figure -10%.

Similar to the brightness gradients but the following saturation gradients show a change of the Hex color DB6D69 by changing the saturation by 10% instead.

 DB6D69

 DB6D69

FFFFFF

 BD5351

 FFA39C

 A0393A

 FFBFB7

 821E24

 FFDBD3

 660010

 FFF8EF

 4A0000

 310002

 000000

 DB6D69

 DB6D69

 DB5853

 DB827F

 DB433D

 DB9795

 DB2E27

 DBACAB

 DB1811

 DBC2C1

 DB0800

 DBD7D7

 DBECEC

 DBFFFF

Harmonies

Analogous

The Analogous color harmony consists of three colors that are next to each other on the color wheel.



D96993



DB6D69



C97B47

Triad

The Triadic color harmony groups three colors that are evenly spaced from another and form a triangle on the color wheel.



DB6D69



489F5F



2A93E2

Complementary

The Complementary color scheme is a pair of colors which are on the opposite of each other on the color wheel.



DB6D69



69D7DB

Split Complementary

Split-complementary colors differ from the complementary color scheme. The scheme consists of three colors, the original color and two neighbors of the complement color.



009ED5



DB6D69



00A389

Square

The Square scheme is like the rectangle color scheme, but the four colors are evenly spaced on the color wheel.



DB6D69



7F973F



00A2B4



8B84D9

Rectangle

The Rectangle color scheme consists of four colors that form a rectangle on the color wheel.



DB6D69



B58639



00A2B4



0098E0

Sweetspot

The Sweet Spot groups the original color and five complimentary colors.



DB6D69



FFD8D6



DB69D7



806867



000000



808080

Same Dimension

The Same Dimension uses a secret algorithm to generate beautiful new colors.



DB6D69



FF6661



DBA669



6E6363



AD0600



2E0200

Inverse Universe

The Inverse Universe completely reimagines the original color for something new.



69D7DB



61F9FF



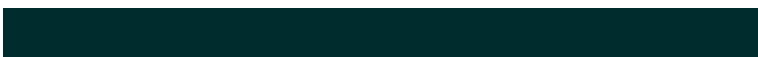
699EDB



636D6E



00A7AD



002C2E

Previews

White Background



This preview shows how the Hex color DB6D69 looks on a white background.

Color Contrast Check

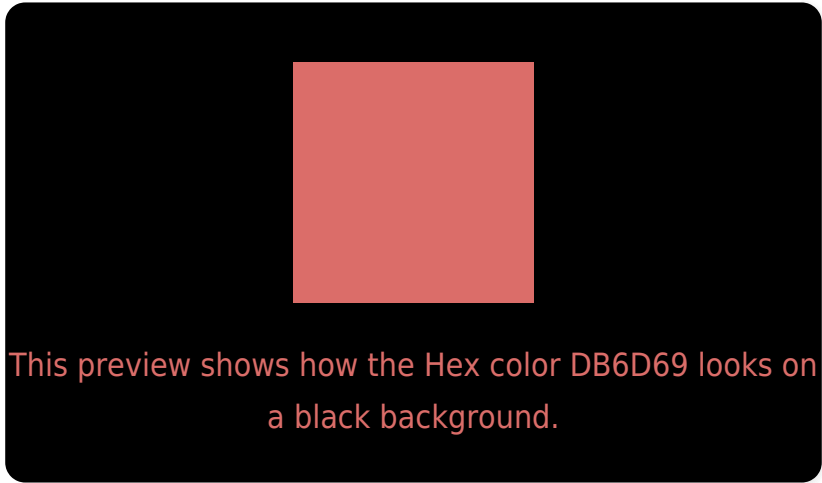
Large Text (above 18pt) WCAG AA ✓ Pass

Any Text WCAG AA × Fail

Large Text (above 18pt) WCAG AAA × Fail

Any Text WCAG AAA × Fail

Black Background



Color Contrast Check

Large Text (above 18pt) WCAG AA ✓ Pass

Any Text WCAG AA ✓ Pass

Large Text (above 18pt) WCAG AAA ✓ Pass

Any Text WCAG AAA × Fail

If you want to check with other color combinations, try the [Color Contrast Checker](#).

Hex DB6D69 Background



This preview shows how black text looks on a background with the Hex color DB6D69.



This preview shows how white text looks on a background with the Hex color DB6D69.

Color Blindness Simulation

Color vision deficiency is a very complex topic, and I could not describe the different causes any better than Wikipedia does, so if you want to learn more, you should check out their [article about color blindness](#).

Dichromacy



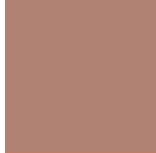


Tritanopia
DC6B73

Trichromacy



Original Color
DB6D69



Protanomaly
AF8273



Deuteranomaly
BC7E66

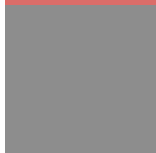


Tritanomaly
DC6C6F

Monochromacy



Original Color
DB6D69



Achromatopsia
8D8D8D



Achromatomaly
A98180

CSS Examples

Text

The CSS property to change the color of the text to Hex DB6D69 is called "color". The color property can be set on classes, ids or directly on the HTML element.

This example shows how text in the color #DB6D69 looks like.

```
.text, #text, p{  
    color:#DB6D69  
}
```

If you want to add a text shadow in that color use the text-shadow property, you can generate a text shadow directly with our [CSS Text Shadow Generator](#).

Here you see how black text with a 4 pixel #DB6D69 colored shadow looks like.

```
.shadow{ text-shadow: 4px 4px 2px #DB6D69
}
```

Border

The CSS property to change the border of an element to Hex DB6D69 is called "border". The border property can be set on classes, ids or directly on the HTML element.

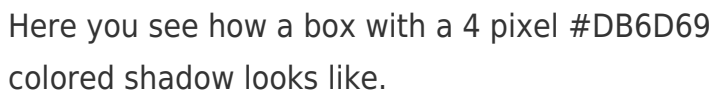
This example shows the color as border, it can be applied via the CSS property "border" or "border-color".

```
.border, #border, table{ border:4px solid
#DB6D69 }
```

If only the border color should be changed use the property `border-color`.

```
.border{ border-color:#DB6D69 }
```

If you want to add a box shadow in that color use:



Here you see how a box with a 4 pixel `#DB6D69` colored shadow looks like.

```
.boxshadow{ -moz-box-shadow:4px 4px 4px  
4px #DB6D69; -webkit-box-shadow:4px 4px  
4px 4px #DB6D69; box-shadow:4px 4px 4px  
4px #DB6D69 }
```

Background

The CSS property to change the background color of an element to Hex DB6D69 is called "background". The background property can be set on classes, ids or directly on the HTML element.

```
.background, #background, body{  
background:#DB6D69 }
```

If only the background color should be changed can be used:

```
.background{ background-color:#DB6D69 }
```

This example shows the color as background, it is applied via the CSS property "background".

To optimize and compress your CSS code, you can use our [online CSS compressor and optimizer](#) based on csstidy. If you want to create a linear or radial gradient as background or border, check our [CSS Gradient Generator](#).

Hey! You found this booklet interesting? Support Converting Colors with the new Membership Option!

The pro membership hides all ads, plus gives you double the colors in the color bucket, and more awesome pro features!

[Learn more, Memberships starting at \\$2.50/m!](#)

**Follow me
on Twitter!**

@ConvertingColor