

Converting Colors

Hex(DB6D89)

Have a look what the booklet for
Hex(DB6D89) contains.

Hex(DB6D89)	3
<i>Conversions</i>	4
<i>Details</i>	6
<i>Harmonies</i>	11
<i>Previews</i>	23
<i>Color Blindness Simulation</i>	26
<i>CSS Examples</i>	29

Color

Hex(DB6D89)

Conversions

Conversions Part 1

Format	Color
Hex	DB6D89
RGB	219, 109, 137
RGB Percent	86%, 43%, 54%
CMY	0.1412, 0.5725, 0.4627
CMYK	0.00, 0.50, 0.37, 0.14
HSL	345°, 60%, 64%
HSV	345°, 50%, 86%
XYZ	39.1974, 27.8035, 26.9676
YIQ	145.0820, 56.5720, 32.0280

Conversions

Conversions Part 2

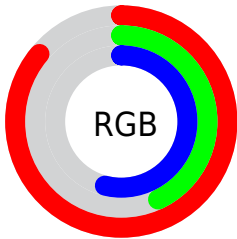
Format	Color
R _Y B	219, 109, 137
Decimal	14380425
CIE Lab	59.71, 45.83, 4.94
CIE LCh	60, 46.097, 6.146
Yxy	27.8035, 0.4171, 0.2959
Android (android.graphics.Color)	4292570505 (0xFFDB6D89)
YUV	145.0820, -3.9844, 64.8261
Hunter-Lab	52.7290, 40.4166, 6.5872

Details

The Hex color **DB6D89** is a light color, and the websafe version is hex **CC6699**. A complement of this color would be **6DDBBF**, and the grayscale version is **919191**.

A 20% lighter version of the original color is **FFA3BE**, and **A13857** is the 20% darker color. If you saturate the color by 10%, you get **DB5779**, and if you desaturate by 10%, it is **DB8399**.

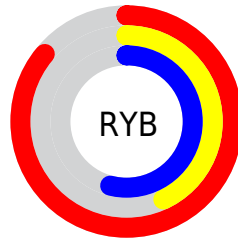
Distribution



Red (86%)

Green (43%)

Blue (54%)



Red (86%)

Yellow (43%)

Blue (54%)

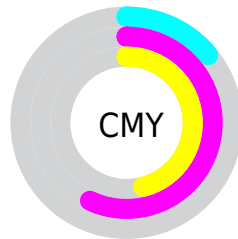


Cyan (0%)

Magenta (50%)

Yellow (37%)

Black (14%)



Cyan (14%)

Magenta (57%)

Yellow (46%)

Brightness & Saturation Gradients

These gradients show how the Hex color DB6D89 changes by changing the brightness by 10 percent. The first figure shows a shift by +10% for each color and the second figure -10%.

Similar to the brightness gradients but the following saturation gradients show a change of the Hex color DB6D89 by changing the saturation by 10% instead.

 DB6D89

 DB6D89

FFFFFF

 BE5370

 FFA3BE

 A13857

 FFBFDA

 841C40

 FFDCF6

 68002A

 FFF9FF

 4D0016

 350002

 040000

 000000

 DB6D89

 DB6D89

 DB5779

 DB8399

 DB4168

 DB99AA

 DB2B58

 DBAFBA

 DB1548

 DBC5CA

 DB0038

 DBDBDB

 DBF0EB

 DBFFFB

 DBFFFF

Harmonies

Analogous

The Analogous color harmony consists of three colors that are next to each other on the color wheel.



C873B1



DB6D89



D77462

Triad

The Triadic color harmony groups three colors that are evenly spaced from another and form a triangle on the color wheel.



DB6D89



759B4C



009DD9

Complementary

The Complementary color scheme is a pair of colors which are on the opposite of each other on the color wheel.



DB6D89



6DDBBF

Split Complementary

Split-complementary colors differ from the complementary color scheme. The scheme consists of three colors, the original color and two neighbors of the complement color.



00A3BF



DB6D89



3BA26E

Square

The Square scheme is like the rectangle color scheme, but the four colors are evenly spaced on the color wheel.



DB6D89



A0903C



00A497



5791E0

Rectangle

The Rectangle color scheme consists of four colors that form a rectangle on the color wheel.



DB6D89



CB7D4D



00A497



009FD2

Sweetspot

The Sweet Spot groups the original color and five complimentary colors.



DB6D89



FFD9E2



BE6DDB



80696E



000000



808080

Same Dimension

The Same Dimension uses a secret algorithm to generate beautiful new colors.



DB6D89



FF668D



DB876D



6E6365



AD002C



2E000C

Inverse Universe

The Inverse Universe completely reimagines the original color for something new.



DB6D89



FF668D



6DC1DB



6E6365



AD002C



2E000C

Previews

White Background



This preview shows how the Hex color DB6D89 looks on a white background.

Color Contrast Check

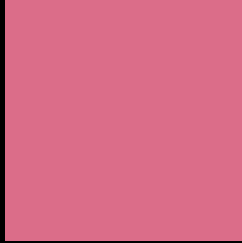
Large Text (above 18pt) WCAG AA ✓ Pass

Any Text WCAG AA × Fail

Large Text (above 18pt) WCAG AAA × Fail

Any Text WCAG AAA × Fail

Black Background



This preview shows how the Hex color DB6D89 looks on a black background.

Color Contrast Check

Large Text (above 18pt) WCAG AA ✓ Pass

Any Text WCAG AA ✓ Pass

Large Text (above 18pt) WCAG AAA ✓ Pass

Any Text WCAG AAA × Fail

If you want to check with other color combinations, try the [Color Contrast Checker](#).

Hex DB6D89 Background



This preview shows how black text looks on a background with the Hex color DB6D89.

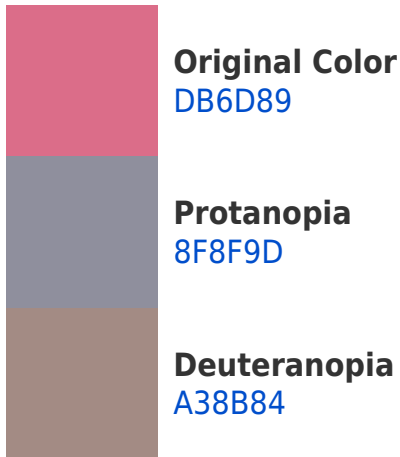


This preview shows how white text looks on a background with the Hex color DB6D89.

Color Blindness Simulation

Color vision deficiency is a very complex topic, and I could not describe the different causes any better than Wikipedia does, so if you want to learn more, you should check out their [article about color blindness](#).

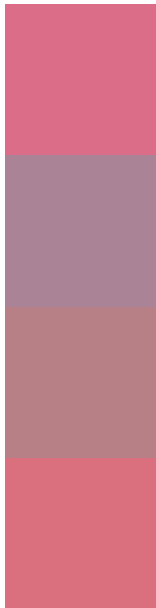
Dichromacy





Tritanopia
DA7078

Trichromacy



Original Color
DB6D89

Protanomaly
AB8396

Deuteranomaly
B78086

Tritanomaly
DA6F7E

Monochromacy



Original Color
DB6D89

Achromatopsia
919191

Achromatomaly
AC848E

CSS Examples

Text

The CSS property to change the color of the text to Hex DB6D89 is called "color". The color property can be set on classes, ids or directly on the HTML element.

This example shows how text in the color #DB6D89 looks like.

```
.text, #text, p{  
    color:#DB6D89  
}
```

If you want to add a text shadow in that color use the text-shadow property, you can generate a text shadow directly with our [CSS Text Shadow Generator](#).

Here you see how black text with a 4 pixel #DB6D89 colored shadow looks like.

```
.shadow{ text-shadow: 4px 4px 2px #DB6D89
}
```

Border

The CSS property to change the border of an element to Hex DB6D89 is called "border". The border property can be set on classes, ids or directly on the HTML element.

This example shows the color as border, it can be applied via the CSS property "border" or "border-color".

```
.border, #border, table{ border:4px solid
#DB6D89 }
```

If only the border color should be changed use the property `border-color`.

```
.border{ border-color:#DB6D89 }
```

If you want to add a box shadow in that color use:

Here you see how a box with a 4 pixel #DB6D89 colored shadow looks like.

```
.boxshadow{ -moz-box-shadow:4px 4px 4px  
4px #DB6D89; -webkit-box-shadow:4px 4px  
4px 4px #DB6D89; box-shadow:4px 4px 4px  
4px #DB6D89 }
```

Background

The CSS property to change the background color of an element to Hex DB6D89 is called "background". The background property can be set on classes, ids or directly on the HTML element.

```
.background, #background, body{  
background:#DB6D89 }
```

If only the background color should be changed can be used:

```
.background{ background-color:#DB6D89 }
```

This example shows the color as background, it is applied via the CSS property "background".

To optimize and compress your CSS code, you can use our [online CSS compressor and optimizer](#) based on csstidy. If you want to create a linear or radial gradient as background or border, check our [CSS Gradient Generator](#).

Hey! You found this booklet interesting? Support Converting Colors with the new Membership Option!

The pro membership hides all ads, plus gives you double the colors in the color bucket, and more awesome pro features!

[Learn more, Memberships starting at \\$2.50/m!](#)

**Follow me
on Twitter!**

@ConvertingColor