

# Converting Colors

Hex(DB7984)

Have a look what the booklet for  
Hex(DB7984) contains.

<b>Hex(DB7984)</b> .....	3
<i><b>Conversions</b></i> .....	4
<i><b>Details</b></i> .....	6
<i><b>Harmonies</b></i> .....	11
<i><b>Previews</b></i> .....	23
<i><b>Color Blindness Simulation</b></i> .....	26
<i><b>CSS Examples</b></i> .....	29

# **Color**

**Hex(DB7984)**

# Conversions

## Conversions Part 1

Format	Color
Hex	DB7984
RGB	219, 121, 132
RGB Percent	86%, 47%, 52%
CMY	0.1412, 0.5255, 0.4824
CMYK	0.00, 0.45, 0.40, 0.14
HSL	353°, 58%, 67%
HSV	353°, 45%, 86%
XYZ	40.2156, 30.4008, 25.5781
YIQ	151.5560, 54.8770, 24.1970

# Conversions

## Conversions Part 2

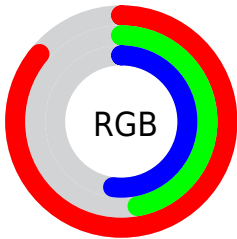
Format	Color
R <sub>Y</sub> B	219, 121, 132
Decimal	14383492
CIE Lab	62.00, 39.17, 11.08
CIE LCh	62, 40.702, 15.789
Yxy	30.4008, 0.4181, 0.3160
Android (android.graphics.Color)	4292573572 (0xFFDB7984)
YUV	151.5560, -9.6411, 59.1484
Hunter-Lab	55.1369, 33.7045, 11.0910

# Details

The Hex color **DB7984** is a light color, and the websafe version is hex **CC6666**. A complement of this color would be **79DBD0**, and the grayscale version is **989898**.

A 20% lighter version of the original color is **FFAFB9**, and **A14553** is the 20% darker color. If you saturate the color by 10%, you get **DB6371**, and if you desaturate by 10%, it is **DB8F97**.

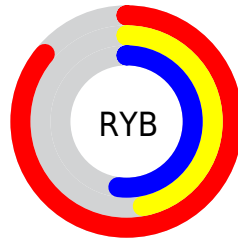
# Distribution



Red (86%)

Green (47%)

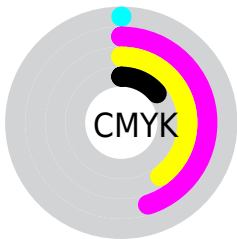
Blue (52%)



Red (86%)

Yellow (47%)

Blue (52%)

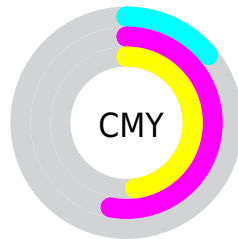


Cyan (0%)

Magenta (45%)

Yellow (40%)

Black (14%)



Cyan (14%)

Magenta (53%)

Yellow (48%)

# Brightness & Saturation Gradients

These gradients show how the Hex color DB7984 changes by changing the brightness by 10 percent. The first figure shows a shift by +10% for each color and the second figure -10%.

Similar to the brightness gradients but the following saturation gradients show a change of the Hex color DB7984 by changing the saturation by 10% instead.



 DB7984

 DB7984

FFFFFF

 BE5F6B

 FFAFB9

 A14553

 FFCBD5

 852C3C

 FFE8F1

 691026

 4E0012

 350001

 0C0000

 000000

 DB7984

 DB7984

 DB6371

 DB8F97

 DB4D5D

 DBA5AB

 DB374A

 DBBBBE

 DB2136

 DBD1D2

 DB0C23

 DBE7E5

 DB0019

 DBFCF9

 DBFFFF

# Harmonies

## Analogous

The Analogous color harmony consists of three colors that are next to each other on the color wheel.



D17BA9



DB7984



D28164

# Triad

The Triadic color harmony groups three colors that are evenly spaced from another and form a triangle on the color wheel.



DB7984



71A362



319EDB

# Complementary

The Complementary color scheme is a pair of colors which are on the opposite of each other on the color wheel.



DB7984



79DBD0

# Split Complementary

Split-complementary colors differ from the complementary color scheme. The scheme consists of three colors, the original color and two neighbors of the complement color.



00A6C9



DB7984



3CA783

# Square

The Square scheme is like the rectangle color scheme, but the four colors are evenly spaced on the color wheel.



DB7984



999A4E



00A9A8



7E93DB

# Rectangle

The Rectangle color scheme consists of four colors that form a rectangle on the color wheel.



DB7984



C48954



00A9A8



00A1D7



# Sweetspot

The Sweet Spot groups the original color and five complimentary colors.



DB7984



FFDEE2



D079DB



806B6D



000000



808080



# Same Dimension

The Same Dimension uses a secret algorithm to generate beautiful new colors.



DB7984



FF7585



DB9F79



6E6364



AD0013



2E0005



# Inverse Universe

The Inverse Universe completely reimagines the original color for something new.



DB7984



FF7585



79B5DB



6E6364



AD0013



2E0005



# Previews

## White Background



This preview shows how the Hex color DB7984 looks on a white background.

## Color Contrast Check

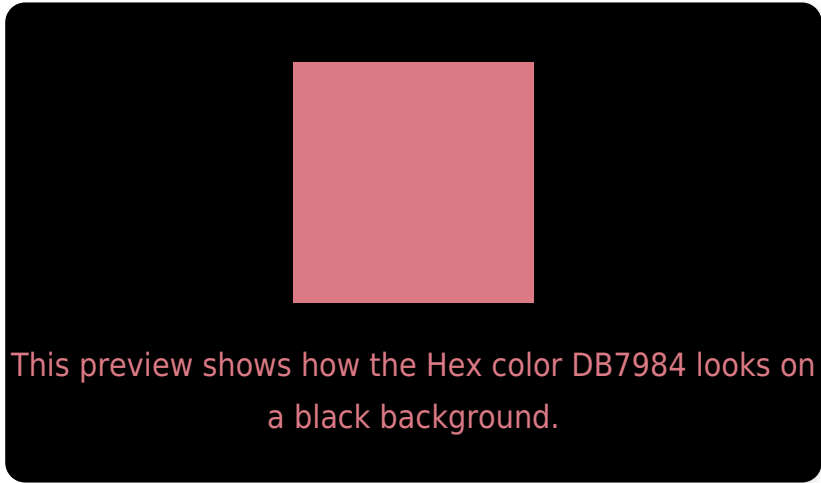
Large Text (above 18pt) WCAG AA × Fail

Any Text WCAG AA × Fail

Large Text (above 18pt) WCAG AAA × Fail

Any Text WCAG AAA × Fail

# Black Background



## Color Contrast Check

Large Text (above 18pt) WCAG AA ✓ Pass

Any Text WCAG AA ✓ Pass

Large Text (above 18pt) WCAG AAA ✓ Pass

Any Text WCAG AAA ✓ Pass

If you want to check with other color combinations, try the [Color Contrast Checker](#).



## Hex DB7984 Background



This preview shows how black text looks on a background with the Hex color DB7984.

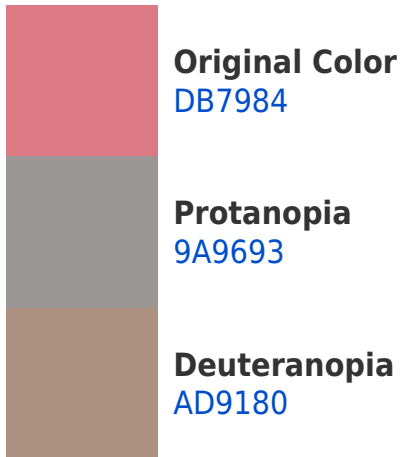


This preview shows how white text looks on a background with the Hex color DB7984.

# Color Blindness Simulation

Color vision deficiency is a very complex topic, and I could not describe the different causes any better than Wikipedia does, so if you want to learn more, you should check out their [article about color blindness](#).

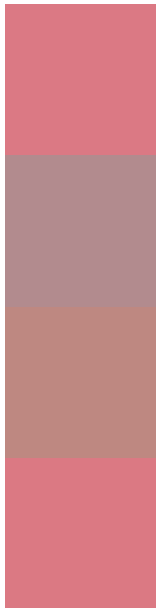
## Dichromacy





**Tritanopia**  
DB7982

# Trichromacy



**Original Color**  
DB7984

**Protanomaly**  
B28B8E

**Deuteranomaly**  
BE8881

**Tritanomaly**  
DB7983

# Monochromacy



**Original Color**  
DB7984

**Achromatopsia**  
989898

**Achromatomaly**  
B08D91

# CSS Examples

## Text

The CSS property to change the color of the text to Hex DB7984 is called "color". The color property can be set on classes, ids or directly on the HTML element.

This example shows how text in the color #DB7984 looks like.

```
.text, #text, p{  
    color:#DB7984  
}
```

If you want to add a text shadow in that color use the text-shadow property, you can generate a text shadow directly with our [CSS Text Shadow Generator](#).

Here you see how black text with a 4 pixel #DB7984 colored shadow looks like.

```
.shadow{ text-shadow: 4px 4px 2px #DB7984
}
```

## Border

The CSS property to change the border of an element to Hex DB7984 is called "border". The border property can be set on classes, ids or directly on the HTML element.

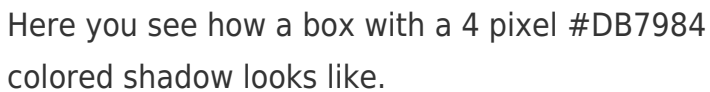
This example shows the color as border, it can be applied via the CSS property "border" or "border-color".

```
.border, #border, table{ border:4px solid
#DB7984 }
```

If only the border color should be changed use the property `border-color`.

```
.border{ border-color:#DB7984 }
```

If you want to add a box shadow in that color use:



Here you see how a box with a 4 pixel #DB7984 colored shadow looks like.

```
.boxshadow{ -moz-box-shadow:4px 4px 4px  
4px #DB7984; -webkit-box-shadow:4px 4px  
4px 4px #DB7984; box-shadow:4px 4px 4px  
4px #DB7984 }
```

# Background

The CSS property to change the background color of an element to Hex DB7984 is called "background". The background property can be set on classes, ids or directly on the HTML element.

```
.background, #background, body{  
background:#DB7984 }
```

If only the background color should be changed can be used:

```
.background{ background-color:#DB7984 }
```

This example shows the color as background, it is applied via the CSS property "background".

To optimize and compress your CSS code, you can use our [online CSS compressor and optimizer](#) based on csstidy. If you want to create a linear or radial gradient as background or border, check our [CSS Gradient Generator](#).



Hey! You found this booklet interesting? Support Converting Colors with the new Membership Option!

The pro membership hides all ads, plus gives you double the colors in the color bucket, and more awesome pro features!

**[Learn more, Memberships starting at \\$2.50/m!](#)**

**Follow me  
on Twitter!**

@ConvertingColor