

Converting Colors

Hex(DB9FAC)

Have a look what the booklet for
Hex(DB9FAC) contains.

Hex(DB9FAC)	3
<i>Conversions</i>	4
<i>Details</i>	6
<i>Harmonies</i>	11
<i>Previews</i>	23
<i>Color Blindness Simulation</i>	26
<i>CSS Examples</i>	29

Color

Hex(DB9FAC)

Conversions

Conversions Part 1

Format	Color
Hex	DB9FAC
RGB	219, 159, 172
RGB Percent	86%, 62%, 67%
CMY	0.1412, 0.3765, 0.3255
CMYK	0.00, 0.27, 0.21, 0.14
HSL	347°, 45%, 74%
HSV	347°, 27%, 86%
XYZ	49.0579, 42.8349, 44.7121
YIQ	178.4220, 31.5870, 16.7630

Conversions

Conversions Part 2

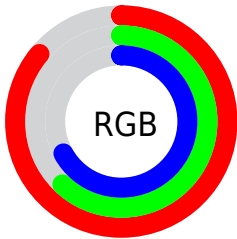
Format	Color
R _Y B	219, 159, 172
Decimal	14393260
CIE Lab	71.44, 24.17, 2.11
CIE LCh	71, 24.259, 4.982
Yxy	42.8349, 0.3591, 0.3136
Android (android.graphics.Color)	4292583340 (0xFFDB9FAC)
YUV	178.4220, -3.1660, 35.5869
Hunter-Lab	65.4484, 19.2631, 5.3090

Details

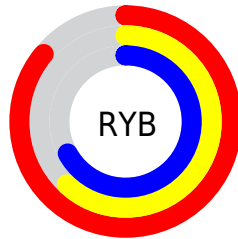
The Hex color **DB9FAC** is a light color, and the websafe version is hex **CC9999**. A complement of this color would be **9FDBCE**, and the grayscale version is **B2B2B2**.

A 20% lighter version of the original color is **FFD6E3**, and **A36B78** is the 20% darker color. If you saturate the color by 10%, you get **DB899B**, and if you desaturate by 10%, it is **DBB5BD**.

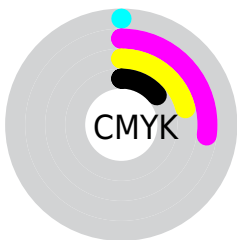
Distribution



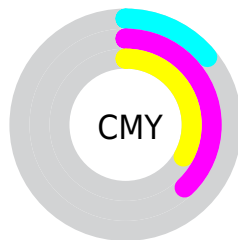
- Red (86%)
- Green (62%)
- Blue (67%)



- Red (86%)
- Yellow (62%)
- Blue (67%)



- Cyan (0%)
- Magenta (27%)
- Yellow (21%)
- Black (14%)



- Cyan (14%)
- Magenta (38%)
- Yellow (33%)

Brightness & Saturation Gradients

These gradients show how the Hex color DB9FAC changes by changing the brightness by 10 percent. The first figure shows a shift by +10% for each color and the second figure -10%.

Similar to the brightness gradients but the following saturation gradients show a change of the Hex color DB9FAC by changing the saturation by 10% instead.

 DB9FAC

 DB9FAC

FFFFFF

 BF8591

 FFD6E3

 A36B78

 FFF3FF

 88525F

 6E3B48

 542431

 3C0D1C

 280001

 000000

 DB9FAC

 DB9FAC

 DB899B

 DBB5BD

 DB738A

 DBCBCE

 DB5D79

 DBE1DF

 DB4767

 DBF7F1

 DB3256

 DBFFFF

 DB1C45

 DB0634

 DB002F

Harmonies

Analogous

The Analogous color harmony consists of three colors that are next to each other on the color wheel.



CFA2C2



DB9FAC



DBA197

Triad

The Triadic color harmony groups three colors that are evenly spaced from another and form a triangle on the color wheel.



DB9FAC



A3B58A



7DB6D6

Complementary

The Complementary color scheme is a pair of colors which are on the opposite of each other on the color wheel.



DB9FAC



9FDBCE

Split Complementary

Split-complementary colors differ from the complementary color scheme. The scheme consists of three colors, the original color and two neighbors of the complement color.



6FBAC7



DB9FAC



8ABA9C

Square

The Square scheme is like the rectangle color scheme, but the four colors are evenly spaced on the color wheel.



DB9FAC



BCAF83



76BCB2



99B0DB

Rectangle

The Rectangle color scheme consists of four colors that form a rectangle on the color wheel.



DB9FAC



D4A58C



76BCB2



77B8D2

Sweetspot

The Sweet Spot groups the original color and five complimentary colors.



DB9FAC



FFEBEF



CE9FDB



807376



000000



808080

Same Dimension

The Same Dimension uses a secret algorithm to generate beautiful new colors.



DB9FAC



FFABBD



DBB09F



6E6365



AD0026



2E000A

Inverse Universe

The Inverse Universe completely reimagines the original color for something new.



DB9FAC



FFABBD



9FCADB



6E6365



AD0026



2E000A

Previews

White Background



This preview shows how the Hex color DB9FAC looks on a white background.

Color Contrast Check

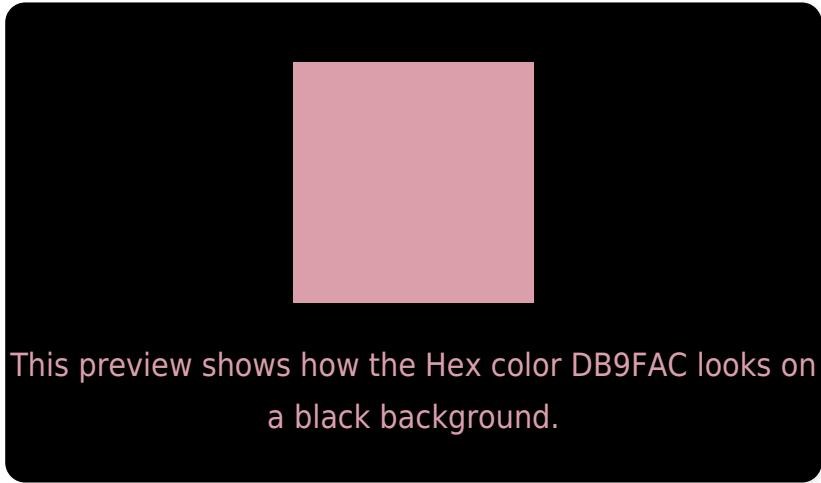
Large Text (above 18pt) WCAG AA × Fail

Any Text WCAG AA × Fail

Large Text (above 18pt) WCAG AAA × Fail

Any Text WCAG AAA × Fail

Black Background



Color Contrast Check

Large Text (above 18pt) WCAG AA ✓ Pass

Any Text WCAG AA ✓ Pass

Large Text (above 18pt) WCAG AAA ✓ Pass

Any Text WCAG AAA ✓ Pass

If you want to check with other color combinations, try the [Color Contrast Checker](#).

Hex DB9FAC Background



This preview shows how black text looks on a background with the Hex color DB9FAC.

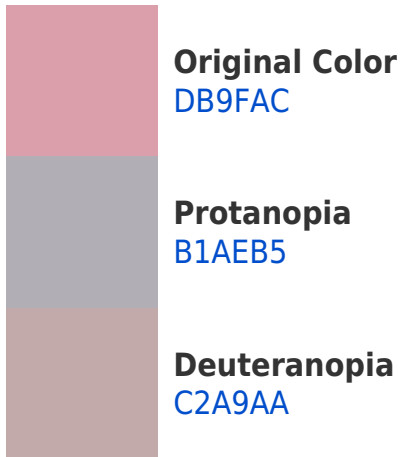


This preview shows how white text looks on a background with the Hex color DB9FAC.

Color Blindness Simulation

Color vision deficiency is a very complex topic, and I could not describe the different causes any better than Wikipedia does, so if you want to learn more, you should check out their [article about color blindness](#).

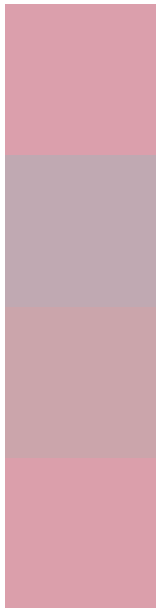
Dichromacy





Tritanopia
DB9FAB

Trichromacy



Original Color
DB9FAC

Protanomaly
C0A9B2

Deuteranomaly
CBA5AB

Tritanomaly
DB9FAB

Monochromacy



Original Color
DB9FAC

Achromatopsia
B2B2B2

Achromatomaly
C1ABB0

CSS Examples

Text

The CSS property to change the color of the text to Hex DB9FAC is called "color". The color property can be set on classes, ids or directly on the HTML element.

This example shows how text in the color #DB9FAC looks like.

```
.text, #text, p{  
    color:#DB9FAC  
}
```

If you want to add a text shadow in that color use the text-shadow property, you can generate a text shadow directly with our [CSS Text Shadow Generator](#).

Here you see how black text with a 4 pixel #DB9FAC colored shadow looks like.

```
.shadow{ text-shadow: 4px 4px 2px #DB9FAC
}
```

Border

The CSS property to change the border of an element to Hex DB9FAC is called "border". The border property can be set on classes, ids or directly on the HTML element.

This example shows the color as border, it can be applied via the CSS property "border" or "border-color".

```
.border, #border, table{ border:4px solid
#DB9FAC }
```

If only the border color should be changed use the property `border-color`.

```
.border{ border-color:#DB9FAC }
```

If you want to add a box shadow in that color use:

Here you see how a box with a 4 pixel #DB9FAC colored shadow looks like.

```
.boxshadow{ -moz-box-shadow:4px 4px 4px  
4px #DB9FAC; -webkit-box-shadow:4px 4px  
4px 4px #DB9FAC; box-shadow:4px 4px 4px  
4px #DB9FAC }
```

Background

The CSS property to change the background color of an element to Hex DB9FAC is called "background". The background property can be set on classes, ids or directly on the HTML element.

```
.background, #background, body{  
background:#DB9FAC }
```

If only the background color should be changed can be used:

```
.background{ background-color:#DB9FAC }
```

This example shows the color as background, it is applied via the CSS property "background".

To optimize and compress your CSS code, you can use our [online CSS compressor and optimizer](#) based on csstidy. If you want to create a linear or radial gradient as background or border, check our [CSS Gradient Generator](#).

Hey! You found this booklet interesting? Support Converting Colors with the new Membership Option!

The pro membership hides all ads, plus gives you double the colors in the color bucket, and more awesome pro features!

[Learn more, Memberships starting at \\$2.50/m!](#)

**Follow me
on Twitter!**

@ConvertingColor