

Converting Colors

Hex(DB9FB3)

Have a look what the booklet for
Hex(DB9FB3) contains.

Hex(DB9FB3)	3
<i>Conversions</i>	4
<i>Details</i>	6
<i>Harmonies</i>	11
<i>Previews</i>	23
<i>Color Blindness Simulation</i>	26
<i>CSS Examples</i>	29

Color

Hex(DB9FB3)

Conversions

Conversions Part 1

Format	Color
Hex	DB9FB3
RGB	219, 159, 179
RGB Percent	86%, 62%, 70%
CMY	0.1412, 0.3765, 0.2980
CMYK	0.00, 0.27, 0.18, 0.14
HSL	340°, 45%, 74%
HSV	340°, 27%, 86%
XYZ	49.7482, 43.1110, 48.3471
YIQ	179.2200, 29.3400, 18.9400

Conversions

Conversions Part 2

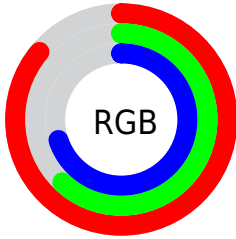
Format	Color
R _{YB}	219, 159, 179
Decimal	14393267
CIE Lab	71.63, 25.23, -1.49
CIE LCh	72, 25.276, 356.611
Yxy	43.1110, 0.3523, 0.3053
Android (android.graphics.Color)	4292583347 (0xFFDB9FB3)
YUV	179.2200, -0.1085, 34.8871
Hunter-Lab	65.6590, 20.3420, 2.3039

Details

The Hex color **DB9FB3** is a light color, and the websafe version is hex **CC9999**. A complement of this color would be **9FDBC7**, and the grayscale version is **B3B3B3**.

A 20% lighter version of the original color is **FFD6EB**, and **A36B7E** is the 20% darker color. If you saturate the color by 10%, you get **DB89A4**, and if you desaturate by 10%, it is **DBB5C2**.

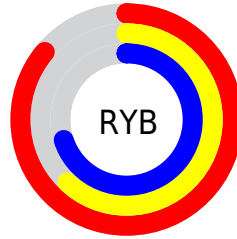
Distribution



Red (86%)

Green (62%)

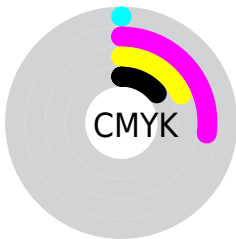
Blue (70%)



Red (86%)

Yellow (62%)

Blue (70%)

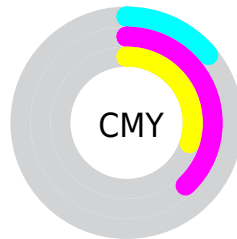


Cyan (0%)

Magenta (27%)

Yellow (18%)

Black (14%)



Cyan (14%)

Magenta (38%)

Yellow (30%)

Brightness & Saturation Gradients

These gradients show how the Hex color DB9FB3 changes by changing the brightness by 10 percent. The first figure shows a shift by +10% for each color and the second figure -10%.

Similar to the brightness gradients but the following saturation gradients show a change of the Hex color DB9FB3 by changing the saturation by 10% instead.

 DB9FB3

 DB9FB3

FFFFFF

 BF8598

 FFD6EB

 A36B7E

 FFF3FF

 885265

 6E3A4D

 552337

 3C0D21

 28000B

 000000

 DB9FB3

 DB9FB3

 DB89A4

 DBB5C2

 DB7396

 DBCBD0

 DB5D87

 DBE1DF

 DB4779

 DBF7ED

 DB326A

 DBFFFC

 DB1C5B

 DBFFFF

 DB064D

 DB0049

Harmonies

Analogous

The Analogous color harmony consists of three colors that are next to each other on the color wheel.



CBA3C9



DB9FB3



DEA09C

Triad

The Triadic color harmony groups three colors that are evenly spaced from another and form a triangle on the color wheel.



DB9FB3



ABB486



75B9D5

Complementary

The Complementary color scheme is a pair of colors which are on the opposite of each other on the color wheel.



DB9FB3



9FDBC7

Split Complementary

Split-complementary colors differ from the complementary color scheme. The scheme consists of three colors, the original color and two neighbors of the complement color.



6CBCC3



DB9FB3



90BA95

Square

The Square scheme is like the rectangle color scheme, but the four colors are evenly spaced on the color wheel.



DB9FB3



C3AD82



78BCAC



90B2DD

Rectangle

The Rectangle color scheme consists of four colors that form a rectangle on the color wheel.



DB9FB3



DAA38F



78BCAC



6FBAD0

Sweetspot

The Sweet Spot groups the original color and five complimentary colors.



DB9FB3



FFEBF1



C79FDB



807377



000000



808080

Same Dimension

The Same Dimension uses a secret algorithm to generate beautiful new colors.



DB9FB3



FFABC7



DBA99F



6E6366



AD003A



2E000F

Inverse Universe

The Inverse Universe completely reimagines the original color for something new.



DB9FB3



FFABC7



9FD1DB



6E6366



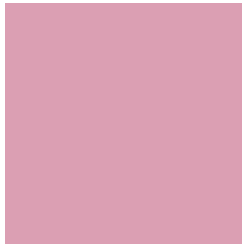
AD003A



2E000F

Previews

White Background



This preview shows how the Hex color DB9FB3 looks on a white background.

Color Contrast Check

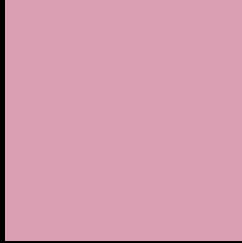
Large Text (above 18pt) WCAG AA × Fail

Any Text WCAG AA × Fail

Large Text (above 18pt) WCAG AAA × Fail

Any Text WCAG AAA × Fail

Black Background



This preview shows how the Hex color DB9FB3 looks on a black background.

Color Contrast Check

Large Text (above 18pt) WCAG AA ✓ Pass

Any Text WCAG AA ✓ Pass

Large Text (above 18pt) WCAG AAA ✓ Pass

Any Text WCAG AAA ✓ Pass

If you want to check with other color combinations, try the [Color Contrast Checker](#).

Hex DB9FB3 Background



This preview shows how black text looks on a background with the Hex color DB9FB3.



This preview shows how white text looks on a background with the Hex color DB9FB3.

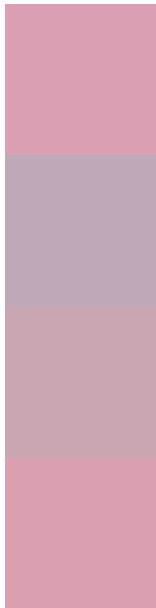
Color Blindness Simulation

Color vision deficiency is a very complex topic, and I could not describe the different causes any better than Wikipedia does, so if you want to learn more, you should check out their [article about color blindness](#).

Dichromacy



Trichromacy



Original Color
DB9FB3

Protanomaly
BFA9B9

Deuteranomaly
CAA6B2

Tritanomaly
DAA0AF

Monochromacy



Original Color
DB9FB3

Achromatopsia
B3B3B3

Achromatomaly
C2ACB3

CSS Examples

Text

The CSS property to change the color of the text to Hex DB9FB3 is called "color". The color property can be set on classes, ids or directly on the HTML element.

This example shows how text in the color #DB9FB3 looks like.

```
.text, #text, p{  
    color:#DB9FB3  
}
```

If you want to add a text shadow in that color use the text-shadow property, you can generate a text shadow directly with our [CSS Text Shadow Generator](#).

Here you see how black text with a 4 pixel #DB9FB3 colored shadow looks like.

```
.shadow{ text-shadow: 4px 4px 2px #DB9FB3  
}
```

Border

The CSS property to change the border of an element to Hex DB9FB3 is called "border". The border property can be set on classes, ids or directly on the HTML element.

This example shows the color as border, it can be applied via the CSS property "border" or "border-color".

```
.border, #border, table{ border:4px solid  
#DB9FB3 }
```

If only the border color should be changed use the property `border-color`.

```
.border{ border-color:#DB9FB3 }
```

If you want to add a box shadow in that color use:

Here you see how a box with a 4 pixel #DB9FB3 colored shadow looks like.

```
.boxshadow{ -moz-box-shadow:4px 4px 4px  
4px #DB9FB3; -webkit-box-shadow:4px 4px  
4px 4px #DB9FB3; box-shadow:4px 4px 4px  
4px #DB9FB3 }
```

Background

The CSS property to change the background color of an element to Hex DB9FB3 is called "background". The background property can be set on classes, ids or directly on the HTML element.

```
.background, #background, body{  
background:#DB9FB3 }
```

If only the background color should be changed can be used:

```
.background{ background-color:#DB9FB3 }
```

This example shows the color as background, it is applied via the CSS property "background".

To optimize and compress your CSS code, you can use our [online CSS compressor and optimizer](#) based on csstidy. If you want to create a linear or radial gradient as background or border, check our [CSS Gradient Generator](#).

Hey! You found this booklet interesting? Support Converting Colors with the new Membership Option!

The pro membership hides all ads, plus gives you double the colors in the color bucket, and more awesome pro features!

[Learn more, Memberships starting at \\$2.50/m!](#)

**Follow me
on Twitter!**

@ConvertingColor