

# Converting Colors

Hex(DBA7BF)

Have a look what the booklet for  
Hex(DBA7BF) contains.

<b>Hex(DBA7BF)</b> .....	3
<i><b>Conversions</b></i> .....	4
<i><b>Details</b></i> .....	6
<i><b>Harmonies</b></i> .....	11
<i><b>Previews</b></i> .....	23
<i><b>Color Blindness Simulation</b></i> .....	26
<i><b>CSS Examples</b></i> .....	29

# **Color**

**Hex(DBA7BF)**

# Conversions

## Conversions Part 1

Format	Color
Hex	DBA7BF
RGB	219, 167, 191
RGB Percent	86%, 65%, 75%
CMY	0.1412, 0.3451, 0.2510
CMYK	0.00, 0.24, 0.13, 0.14
HSL	332°, 42%, 76%
HSV	332°, 24%, 86%
XYZ	52.4361, 46.4591, 55.4940
YIQ	185.2840, 23.2880, 18.4880

# Conversions

## Conversions Part 2

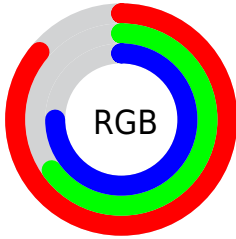
Format	Color
R <sub>Y</sub> B	219, 167, 191
Decimal	14395327
CIE Lab	73.84, 22.83, -4.86
CIE LCh	74, 23.338, 347.991
Yxy	46.4591, 0.3396, 0.3009
Android (android.graphics.Color)	4292585407 (0xFFDBA7BF)
YUV	185.2840, 2.8180, 29.5689
Hunter-Lab	68.1609, 18.0383, -0.5590

# Details

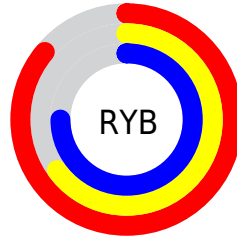
The Hex color **DBA7BF** is a light color, and the websafe version is hex **CC9999**. A complement of this color would be **A7DBC3**, and the grayscale version is **B9B9B9**.

A 20% lighter version of the original color is **FFDEF7**, and **A3738A** is the 20% darker color. If you saturate the color by 10%, you get **DB91B3**, and if you desaturate by 10%, it is **DBBDCB**.

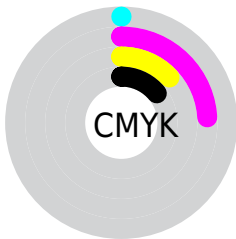
# Distribution



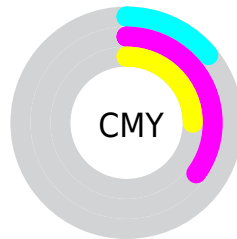
- Red (86%)
- Green (65%)
- Blue (75%)



- Red (86%)
- Yellow (65%)
- Blue (75%)



- Cyan (0%)
- Magenta (24%)
- Yellow (13%)
- Black (14%)



- Cyan (14%)
- Magenta (35%)
- Yellow (25%)

# Brightness & Saturation Gradients

These gradients show how the Hex color DBA7BF changes by changing the brightness by 10 percent. The first figure shows a shift by +10% for each color and the second figure -10%.

Similar to the brightness gradients but the following saturation gradients show a change of the Hex color DBA7BF by changing the saturation by 10% instead.



 DBA7BF

 DBA7BF

FFFFFF

 BF8CA4

 FFDEF7

 A3738A

 FFFBFF

 895A70

 6F4258

 562B41

 3D152B

 280016

 000000

 DBA7BF

 DBA7BF

 DB91B3

 DBBDCB

 DB7BA7

 DBD3D7

 DB659C

 DBE9E2

 DB4F90

 DBFFEE

 DB3A84

 DBFFFA

 DB2478

 DBFFFF

 DB0E6C

 DB0065

# Harmonies

## Analogous

The Analogous color harmony consists of three colors that are next to each other on the color wheel.



C9ACD2



DBA7BF



E2A7A9

# Triad

The Triadic color harmony groups three colors that are evenly spaced from another and form a triangle on the color wheel.



DBA7BF



B8B88D



7DBFD5

# Complementary

The Complementary color scheme is a pair of colors which are on the opposite of each other on the color wheel.



DBA7BF



A7DBC3

# Split Complementary

Split-complementary colors differ from the complementary color scheme. The scheme consists of three colors, the original color and two neighbors of the complement color.



7AC2C2



DBA7BF



A0BE98

# Square

The Square scheme is like the rectangle color scheme, but the four colors are evenly spaced on the color wheel.



DBA7BF



CEB18C



89C1AC



91BADF

# Rectangle

The Rectangle color scheme consists of four colors that form a rectangle on the color wheel.



DBA7BF



E0A99C



89C1AC



7AC0CF



# Sweetspot

The Sweet Spot groups the original color and five complimentary colors.



DBA7BF



FFEDF5



C3A7DB



80757A



000000



808080



# Same Dimension

The Same Dimension uses a secret algorithm to generate beautiful new colors.



DBA7BF



FFB8D9



DBA9A7



6E6368



AD0050



2E0015



# Inverse Universe

The Inverse Universe completely reimagines the original color for something new.



DBA7BF



FFB8D9



A7D9DB



6E6368



AD0050

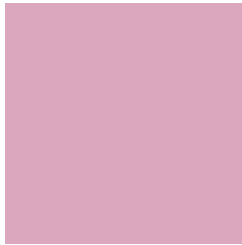


2E0015



# Previews

## White Background



This preview shows how the Hex color DBA7BF looks on a white background.

## Color Contrast Check

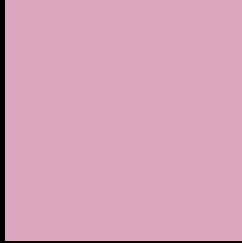
Large Text (above 18pt) WCAG AA × Fail

Any Text WCAG AA × Fail

Large Text (above 18pt) WCAG AAA × Fail

Any Text WCAG AAA × Fail

# Black Background



This preview shows how the Hex color DBA7BF looks on a black background.

## Color Contrast Check

Large Text (above 18pt) WCAG AA ✓ Pass

Any Text WCAG AA ✓ Pass

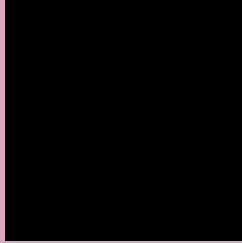
Large Text (above 18pt) WCAG AAA ✓ Pass

Any Text WCAG AAA ✓ Pass

If you want to check with other color combinations, try the [Color Contrast Checker](#).



## Hex DBA7BF Background



This preview shows how black text looks on a background with the Hex color DBA7BF.

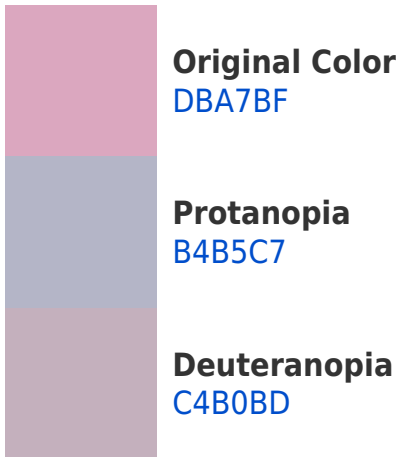


This preview shows how white text looks on a background with the Hex color DBA7BF.

# Color Blindness Simulation

Color vision deficiency is a very complex topic, and I could not describe the different causes any better than Wikipedia does, so if you want to learn more, you should check out their [article about color blindness](#).

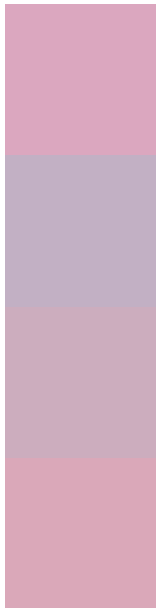
## Dichromacy





**Tritanopia**  
DAA9B6

# Trichromacy



**Original Color**  
DBA7BF

**Protanomaly**  
C2B0C4

**Deuteranomaly**  
CCADBE

**Tritanomaly**  
DAA8B9

# Monochromacy



**Original Color**  
DBA7BF

**Achromatopsia**  
B9B9B9

**Achromatomaly**  
C5B2BB

# CSS Examples

## Text

The CSS property to change the color of the text to Hex DBA7BF is called "color". The color property can be set on classes, ids or directly on the HTML element.

This example shows how text in the color #DBA7BF looks like.

```
.text, #text, p{  
    color:#DBA7BF  
}
```

If you want to add a text shadow in that color use the text-shadow property, you can generate a text shadow directly with our [CSS Text Shadow Generator](#).

Here you see how black text with a 4 pixel #DBA7BF colored shadow looks like.

```
.shadow{ text-shadow: 4px 4px 2px #DBA7BF
}
```

## Border

The CSS property to change the border of an element to Hex DBA7BF is called "border". The border property can be set on classes, ids or directly on the HTML element.

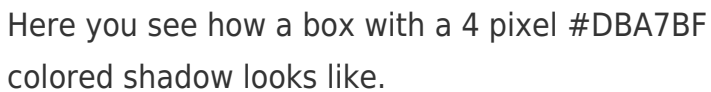
This example shows the color as border, it can be applied via the CSS property "border" or "border-color".

```
.border, #border, table{ border:4px solid
#DBA7BF }
```

If only the border color should be changed use the property `border-color`.

```
.border{ border-color:#DBA7BF }
```

If you want to add a box shadow in that color use:



Here you see how a box with a 4 pixel #DBA7BF colored shadow looks like.

```
.boxshadow{ -moz-box-shadow:4px 4px 4px  
4px #DBA7BF; -webkit-box-shadow:4px 4px  
4px 4px #DBA7BF; box-shadow:4px 4px 4px  
4px #DBA7BF }
```

# Background

The CSS property to change the background color of an element to Hex DBA7BF is called "background". The background property can be set on classes, ids or directly on the HTML element.

```
.background, #background, body{  
background:#DBA7BF }
```

If only the background color should be changed can be used:

```
.background{ background-color:#DBA7BF }
```

This example shows the color as background, it is applied via the CSS property "background".

To optimize and compress your CSS code, you can use our [online CSS compressor and optimizer](#) based on csstidy. If you want to create a linear or radial gradient as background or border, check our [CSS Gradient Generator](#).



Hey! You found this booklet interesting? Support Converting Colors with the new Membership Option!

The pro membership hides all ads, plus gives you double the colors in the color bucket, and more awesome pro features!

**[Learn more, Memberships starting at \\$2.50/m!](#)**

**Follow me  
on Twitter!**

@ConvertingColor