

Converting Colors

Hex(DBA88E)

Have a look what the booklet for
Hex(DBA88E) contains.

| | |
|--|----|
| Hex(DBA88E) | 3 |
| <i>Conversions</i> | 4 |
| <i>Details</i> | 6 |
| <i>Harmonies</i> | 11 |
| <i>Previews</i> | 23 |
| <i>Color Blindness Simulation</i> | 26 |
| <i>CSS Examples</i> | 29 |

Color

Hex(DBA88E)

Conversions

Conversions Part 1

| Format | Color |
|---------------|---------------------------|
| Hex | DBA88E |
| RGB | 219, 168, 142 |
| RGB Percent | 86%, 66%, 56% |
| CMY | 0.1412, 0.3412, 0.4431 |
| CMYK | 0.00, 0.23, 0.35, 0.14 |
| HSL | 20°, 52%, 71% |
| HSV | 20°, 35%, 86% |
| XYZ | 48.0985, 45.0183, 31.7455 |
| YIQ | 180.2850, 38.7420, 2.7260 |

Conversions

Conversions Part 2

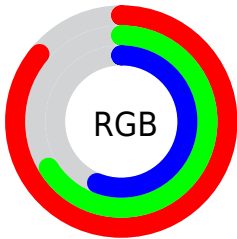
| Format | Color |
|-------------------------------------|--------------------------------|
| R _Y B | 219, 181, 142 |
| Decimal | 14395534 |
| CIE Lab | 72.90, 15.24, 20.66 |
| CIE LCh | 73, 25.675, 53.595 |
| Yxy | 45.0183, 0.3852, 0.3605 |
| Android (android.graphics.Color) | 4292585614 (0xFFDBA88E) |
| YUV | 180.2850, -18.8745, 33.9531 |
| Hunter-Lab | 67.0957, 10.5429, 18.9146 |

Details

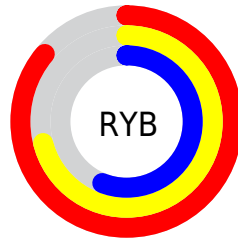
The Hex color **DBA88E** is a light color, and the websafe version is hex **CC9999**. A complement of this color would be **8EC1DB**, and the grayscale version is **B4B4B4**.

A 20% lighter version of the original color is **FFDFC4**, and **A2745C** is the 20% darker color. If you saturate the color by 10%, you get **DB9978**, and if you desaturate by 10%, it is **DBB7A4**.

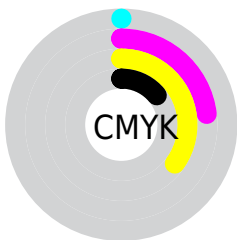
Distribution



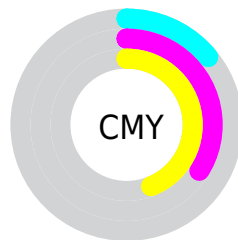
- Red (86%)
- Green (66%)
- Blue (56%)



- Red (86%)
- Yellow (71%)
- Blue (56%)



- Cyan (0%)
- Magenta (23%)
- Yellow (35%)
- Black (14%)



- Cyan (14%)
- Magenta (34%)
- Yellow (44%)

Brightness & Saturation Gradients

These gradients show how the Hex color DBA88E changes by changing the brightness by 10 percent. The first figure shows a shift by +10% for each color and the second figure -10%.

Similar to the brightness gradients but the following saturation gradients show a change of the Hex color DBA88E by changing the saturation by 10% instead.

 DBA88E

FFFFFF

 FFDFC4

 FFFCE0

 FFFFFFFC

 DBA88E

 BE8E74

 A2745C

 875B44

 6D432D

 532D18

 3B1800

 230000

 000000

 DBA88E

 DBA88E

 DB9978

 DBB7A4

 DB8B62

 DBC5BA

 DB7C4C

 DBD4D0

 DB6E36

 DBE2E6

 DB5F21

 DBF1FC

 DB510B

 DBFFFF

 DB4A00

Harmonies

Analogous

The Analogous color harmony consists of three colors that are next to each other on the color wheel.



E3A3A1



DBA88E



C9B084

Triad

The Triadic color harmony groups three colors that are evenly spaced from another and form a triangle on the color wheel.



DBA88E



7DC0AD



B0AFDE

Complementary

The Complementary color scheme is a pair of colors which are on the opposite of each other on the color wheel.



DBA88E



8EC1DB

Split Complementary

Split-complementary colors differ from the complementary color scheme. The scheme consists of three colors, the original color and two neighbors of the complement color.



8FB7E1



DBA88E



6FC0C5

Square

The Square scheme is like the rectangle color scheme, but the four colors are evenly spaced on the color wheel.



DBA88E



96BD96



75BDD8



CCA7CF

Rectangle

The Rectangle color scheme consists of four colors that form a rectangle on the color wheel.



DBA88E



B9B585



75BDD8



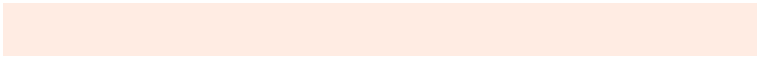
A5B1E0

Sweetspot

The Sweet Spot groups the original color and five complimentary colors.



DBA88E



FFECE3



DB8EC1



80756F



000000



808080

Same Dimension

The Same Dimension uses a secret algorithm to generate beautiful new colors.



DBA88E



FFB894



DBCE8E



6E6663



AD3B00



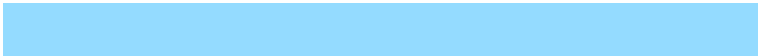
2E0F00

Inverse Universe

The Inverse Universe completely reimagines the original color for something new.



8EC1DB



94DBFF



8E9BDB



636A6E



0073AD



001E2E

Previews

White Background



This preview shows how the Hex color DBA88E looks on a white background.

Color Contrast Check

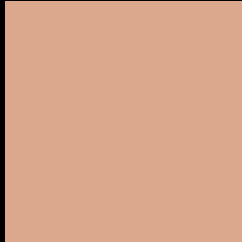
Large Text (above 18pt) WCAG AA × Fail

Any Text WCAG AA × Fail

Large Text (above 18pt) WCAG AAA × Fail

Any Text WCAG AAA × Fail

Black Background



This preview shows how the Hex color DBA88E looks on a black background.

Color Contrast Check

Large Text (above 18pt) WCAG AA ✓ Pass

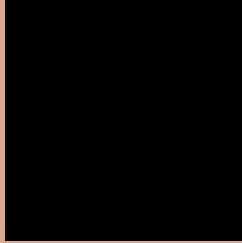
Any Text WCAG AA ✓ Pass

Large Text (above 18pt) WCAG AAA ✓ Pass

Any Text WCAG AAA ✓ Pass

If you want to check with other color combinations, try the [Color Contrast Checker](#).

Hex DBA88E Background



This preview shows how black text looks on a background with the Hex color DBA88E.

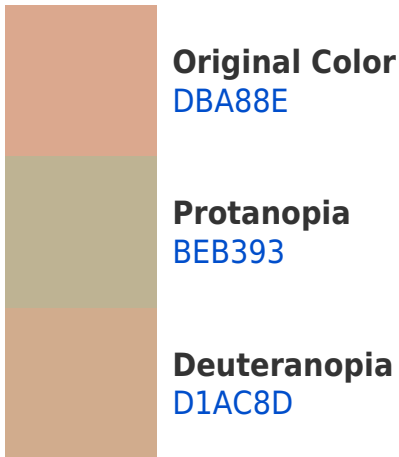



This preview shows how white text looks on a background with the Hex color DBA88E.

Color Blindness Simulation

Color vision deficiency is a very complex topic, and I could not describe the different causes any better than Wikipedia does, so if you want to learn more, you should check out their [article about color blindness](#).

Dichromacy





Tritanopia
DEA3B0

Trichromacy



Original Color
DBA88E

Protanomaly
C9AF91

Deuteranomaly
D5AB8D

Tritanomaly
DDA5A4

Monochromacy



Original Color
DBA88E

Achromatopsia
B4B4B4

Achromatomaly
C2B0A6

CSS Examples

Text

The CSS property to change the color of the text to Hex DBA88E is called "color". The color property can be set on classes, ids or directly on the HTML element.

This example shows how text in the color #DBA88E looks like.

```
.text, #text, p{  
    color:#DBA88E  
}
```

If you want to add a text shadow in that color use the text-shadow property, you can generate a text shadow directly with our [CSS Text Shadow Generator](#).

Here you see how black text with a 4 pixel #DBA88E colored shadow looks like.

```
.shadow{ text-shadow: 4px 4px 2px #DBA88E
}
```

Border

The CSS property to change the border of an element to Hex DBA88E is called "border". The border property can be set on classes, ids or directly on the HTML element.

This example shows the color as border, it can be applied via the CSS property "border" or "border-color".

```
.border, #border, table{ border:4px solid
#DBA88E }
```

If only the border color should be changed use the property `border-color`.

```
.border{ border-color:#DBA88E }
```

If you want to add a box shadow in that color use:

Here you see how a box with a 4 pixel #DBA88E colored shadow looks like.

```
.boxshadow{ -moz-box-shadow:4px 4px 4px  
4px #DBA88E; -webkit-box-shadow:4px 4px  
4px 4px #DBA88E; box-shadow:4px 4px 4px  
4px #DBA88E }
```

Background

The CSS property to change the background color of an element to Hex DBA88E is called "background". The background property can be set on classes, ids or directly on the HTML element.

```
.background, #background, body{  
background:#DBA88E }
```

If only the background color should be changed can be used:

```
.background{ background-color:#DBA88E }
```

This example shows the color as background, it is applied via the CSS property "background".

To optimize and compress your CSS code, you can use our [online CSS compressor and optimizer](#) based on csstidy. If you want to create a linear or radial gradient as background or border, check our [CSS Gradient Generator](#).

Hey! You found this booklet interesting? Support Converting Colors with the new Membership Option!

The pro membership hides all ads, plus gives you double the colors in the color bucket, and more awesome pro features!

[Learn more, Memberships starting at \\$2.50/m!](#)

**Follow me
on Twitter!**

@ConvertingColor