

# Converting Colors

Hex(DBB1BC)

Have a look what the booklet for  
Hex(DBB1BC) contains.

<b>Hex(DBB1BC)</b> .....	3
<i><b>Conversions</b></i> .....	4
<i><b>Details</b></i> .....	6
<i><b>Harmonies</b></i> .....	11
<i><b>Previews</b></i> .....	23
<i><b>Color Blindness Simulation</b></i> .....	26
<i><b>CSS Examples</b></i> .....	29

# **Color**

**Hex(DBB1BC)**

# Conversions

## Conversions Part 1

Format	Color
Hex	DBB1BC
RGB	219, 177, 188
RGB Percent	86%, 69%, 74%
CMY	0.1412, 0.3059, 0.2627
CMYK	0.00, 0.19, 0.14, 0.14
HSL	344°, 37%, 78%
HSV	344°, 19%, 86%
XYZ	54.0127, 50.1352, 54.4072
YIQ	190.8120, 21.5010, 12.3250

# Conversions

## Conversions Part 2

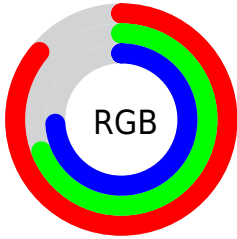
Format	Color
<a href="#">RYB</a>	<a href="#">219, 177, 188</a>
Decimal	<a href="#">14397884</a>
CIELab	<a href="#">76.15, 16.94, 0.18</a>
CIELCh	<a href="#">76, 16.941, 0.596</a>
Yxy	<a href="#">50.1352, 0.3407, 0.3162</a>
Android (android.graphics.Color)	<a href="#">4292587964</a> ( <a href="#">0xFFDDBB1BC</a> )
YUV	<a href="#">190.8120, -1.3863, 24.7209</a>
Hunter-Lab	<a href="#">70.8062, 12.2532, 4.0061</a>

# Details

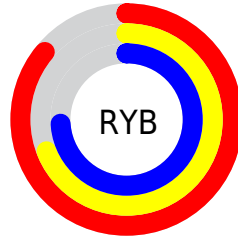
The Hex color **DBB1BC** is a light color, and the websafe version is hex **CC9999**. A complement of this color would be **B1DBD0**, and the grayscale version is **BFBFBF**.

A 20% lighter version of the original color is **FFE9F4**, and **A47C87** is the 20% darker color. If you saturate the color by 10%, you get **DB9BAC**, and if you desaturate by 10%, it is **DBC7CC**.

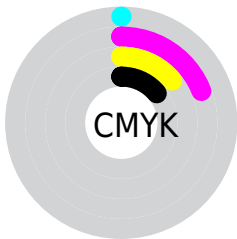
# Distribution



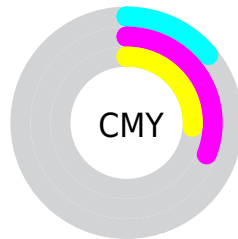
- Red (86%)
- Green (69%)
- Blue (74%)



- Red (86%)
- Yellow (69%)
- Blue (74%)



- Cyan (0%)
- Magenta (19%)
- Yellow (14%)
- Black (14%)



- Cyan (14%)
- Magenta (31%)
- Yellow (26%)

# Brightness & Saturation Gradients

These gradients show how the Hex color DBB1BC changes by changing the brightness by 10 percent. The first figure shows a shift by +10% for each color and the second figure -10%.

Similar to the brightness gradients but the following saturation gradients show a change of the Hex color DBB1BC by changing the saturation by 10% instead.



 DBB1BC

FFFFFF

 FFE9F4

 DBB1BC

 BF96A1

 A47C87

 89636E

 6F4B55

 56343E

 3E1E28

 280914

 010000

 000000

 DBB1BC

 DBB1BC

 DB9BAC

 DBC7CC

 DB859C

 DBDDDC

 DB6F8C

 DBF3EC

 DB597B

 DBFFFD

 DB446B

 DBFFFF

 DB2E5B

 DB184B

 DB023B

 DB0039

# Harmonies

## Analogous

The Analogous color harmony consists of three colors that are next to each other on the color wheel.



D1B3CB



DBB1BC



DDB2AD

# Triad

The Triadic color harmony groups three colors that are evenly spaced from another and form a triangle on the color wheel.



DBB1BC



B7C0A1



9AC2D6

# Complementary

The Complementary color scheme is a pair of colors which are on the opposite of each other on the color wheel.



DBB1BC



B1DBD0

# Split Complementary

Split-complementary colors differ from the complementary color scheme. The scheme consists of three colors, the original color and two neighbors of the complement color.



93C4CB



DBB1BC



A5C3AC

# Square

The Square scheme is like the rectangle color scheme, but the four colors are evenly spaced on the color wheel.



DBB1BC



C8BB9D



97C5BC



ABBDDB

# Rectangle

The Rectangle color scheme consists of four colors that form a rectangle on the color wheel.



DBB1BC



D9B4A4



97C5BC



96C3D3

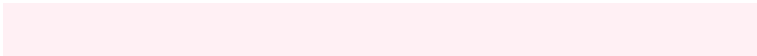


# Sweetspot

The Sweet Spot groups the original color and five complimentary colors.



DBB1BC



FFF0F4



D0B1DB



807779



000000



808080



# Same Dimension

The Same Dimension uses a secret algorithm to generate beautiful new colors.



DBB1BC



FFC4D4



DBBBB1



6E6366



AD002D



2E000C



# Inverse Universe

The Inverse Universe completely reimagines the original color for something new.



DBB1BC



FFC4D4



B1D1DB



6E6366



AD002D

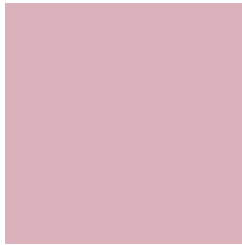


2E000C



# Previews

## White Background



This preview shows how the Hex color DBB1BC looks on a white background.

## Color Contrast Check

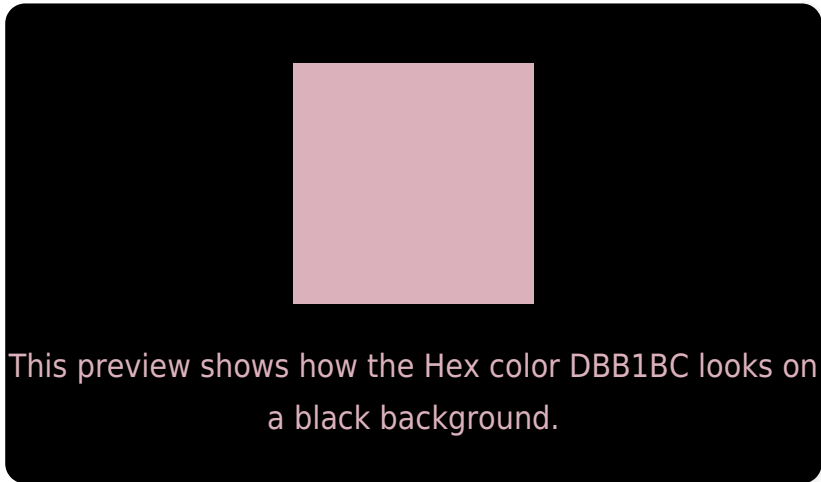
Large Text (above 18pt) WCAG AA × Fail

Any Text WCAG AA × Fail

Large Text (above 18pt) WCAG AAA × Fail

Any Text WCAG AAA × Fail

# Black Background



## Color Contrast Check

Large Text (above 18pt) WCAG AA ✓ Pass

Any Text WCAG AA ✓ Pass

Large Text (above 18pt) WCAG AAA ✓ Pass

Any Text WCAG AAA ✓ Pass

If you want to check with other color combinations, try the [Color Contrast Checker](#).



## Hex DBB1BC Background



This preview shows how black text looks on a background with the Hex color DBB1BC.



This preview shows how white text looks on a background with the Hex color DBB1BC.

# Color Blindness Simulation

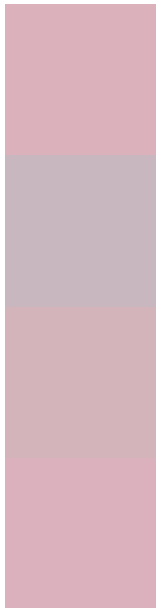
Color vision deficiency is a very complex topic, and I could not describe the different causes any better than Wikipedia does, so if you want to learn more, you should check out their [article about color blindness](#).

## Dichromacy





# Trichromacy



**Original Color**  
DBB1BC

**Protanomaly**  
C9B7C0

**Deuteranomaly**  
D3B4BB

**Tritanomaly**  
DBB1BD

# Monochromacy



**Original Color**  
DBB1BC

**Achromatopsia**  
BFBFBF

**Achromatomaly**  
C9BABE

# CSS Examples

## Text

The CSS property to change the color of the text to Hex DBB1BC is called "color". The color property can be set on classes, ids or directly on the HTML element.

This example shows how text in the color #DBB1BC looks like.

```
.text, #text, p{  
    color:#DBB1BC  
}
```

If you want to add a text shadow in that color use the text-shadow property, you can generate a text shadow directly with our [CSS Text Shadow Generator](#).

Here you see how black text with a 4 pixel #DBB1BC colored shadow looks like.

```
.shadow{ text-shadow: 4px 4px 2px #DBB1BC }  
}
```

## Border

The CSS property to change the border of an element to Hex DBB1BC is called "border". The border property can be set on classes, ids or directly on the HTML element.

This example shows the color as border, it can be applied via the CSS property "border" or "border-color".

```
.border, #border, table{ border:4px solid #DBB1BC }  
}
```

If only the border color should be changed use the property `border-color`.

```
.border{ border-color:#DBB1BC }
```

If you want to add a box shadow in that color use:

Here you see how a box with a 4 pixel #DBB1BC colored shadow looks like.

```
.boxshadow{ -moz-box-shadow:4px 4px 4px  
4px #DBB1BC; -webkit-box-shadow:4px 4px  
4px 4px #DBB1BC; box-shadow:4px 4px 4px  
4px #DBB1BC }
```

# Background

The CSS property to change the background color of an element to Hex DBB1BC is called "background". The background property can be set on classes, ids or directly on the HTML element.

```
.background, #background, body{  
background:#DBB1BC }
```

If only the background color should be changed can be used:

```
.background{ background-color:#DBB1BC }
```

This example shows the color as background, it is applied via the CSS property "background".

To optimize and compress your CSS code, you can use our [online CSS compressor and optimizer](#) based on csstidy. If you want to create a linear or radial gradient as background or border, check our [CSS Gradient Generator](#).



Hey! You found this booklet interesting? Support Converting Colors with the new Membership Option!

The pro membership hides all ads, plus gives you double the colors in the color bucket, and more awesome pro features!

**[Learn more, Memberships starting at \\$2.50/m!](#)**

**Follow me  
on Twitter!**

@ConvertingColor