

Converting Colors

Hex(DBB2B7)

Have a look what the booklet for
Hex(DBB2B7) contains.

Hex(DBB2B7)	3
<i>Conversions</i>	4
<i>Details</i>	6
<i>Harmonies</i>	11
<i>Previews</i>	23
<i>Color Blindness Simulation</i>	26
<i>CSS Examples</i>	29

Color

Hex(DBB2B7)

Conversions

Conversions Part 1

Format	Color
Hex	DBB2B7
RGB	219, 178, 183
RGB Percent	86%, 70%, 72%
CMY	0.1412, 0.3020, 0.2824
CMYK	0.00, 0.19, 0.16, 0.14
HSL	353°, 36%, 78%
HSV	353°, 19%, 86%
XYZ	53.6811, 50.3198, 51.6831
YIQ	190.8290, 22.8310, 10.2470

Conversions

Conversions Part 2

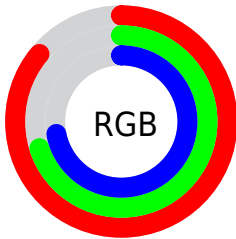
Format	Color
R _Y B	219, 178, 183
Decimal	14398135
CIE Lab	76.27, 15.60, 3.07
CIE LCh	76, 15.903, 11.113
Yxy	50.3198, 0.3448, 0.3232
Android (android.graphics.Color)	4292588215 (0xFFDDBB2B7)
YUV	190.8290, -3.8597, 24.7060
Hunter-Lab	70.9364, 10.9409, 6.4578

Details

The Hex color **DBB2B7** is a light color, and the websafe version is hex **CC9999**. A complement of this color would be **B2DBD6**, and the grayscale version is **BFBFBF**.

A 20% lighter version of the original color is **FFEAEF**, and **A47D82** is the 20% darker color. If you saturate the color by 10%, you get **DB9CA4**, and if you desaturate by 10%, it is **DBC8CA**.

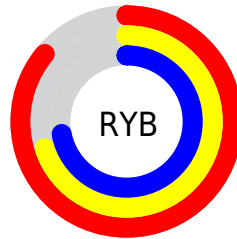
Distribution



Red (86%)

Green (70%)

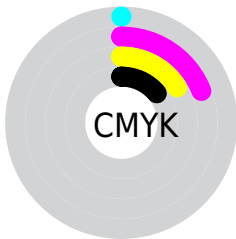
Blue (72%)



Red (86%)

Yellow (70%)

Blue (72%)

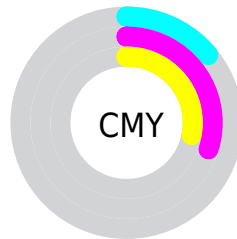


Cyan (0%)

Magenta (19%)

Yellow (16%)

Black (14%)



Cyan (14%)

Magenta (30%)

Yellow (28%)

Brightness & Saturation Gradients

These gradients show how the Hex color DBB2B7 changes by changing the brightness by 10 percent. The first figure shows a shift by +10% for each color and the second figure -10%.

Similar to the brightness gradients but the following saturation gradients show a change of the Hex color DBB2B7 by changing the saturation by 10% instead.

 DBB2B7

 DBB2B7

FFFFFF

 BF979C

 FFEAEF

 A47D82

 896469

 6F4C51

 56353A

 3E1F25

 280A0F

 000000

 DBB2B7

 DBB2B7

 DB9CA4

 DBC8CA

 DB8691

 DBDEDD

 DB707D

 DBF4F1

 DB5A6A

 DBFFFF

 DB4457

 DB2F44

 DB1930

 DB031D

 DB001B

Harmonies

Analogous

The Analogous color harmony consists of three colors that are next to each other on the color wheel.



D4B3C6



DBB2B7



DAB4A9

Triad

The Triadic color harmony groups three colors that are evenly spaced from another and form a triangle on the color wheel.



DBB2B7



B1C1A6



A1C0D7

Complementary

The Complementary color scheme is a pair of colors which are on the opposite of each other on the color wheel.



DBB2B7



B2DBD6

Split Complementary

Split-complementary colors differ from the complementary color scheme. The scheme consists of three colors, the original color and two neighbors of the complement color.



97C3CF



DBB2B7



A2C4B2

Square

The Square scheme is like the rectangle color scheme, but the four colors are evenly spaced on the color wheel.



DBB2B7



C2BD9F



98C5C1



B3BBD9

Rectangle

The Rectangle color scheme consists of four colors that form a rectangle on the color wheel.



DBB2B7



D4B6A3



98C5C1



9DC1D5

Sweetspot

The Sweet Spot groups the original color and five complimentary colors.



DBB2B7



FFF0F2



D6B2DB



807778



000000



808080

Same Dimension

The Same Dimension uses a secret algorithm to generate beautiful new colors.



DBB2B7



FFC7CE



DBC1B2



6E6364



AD0015



2E0006

Inverse Universe

The Inverse Universe completely reimagines the original color for something new.



DBB2B7



FFC7CE



B2CCDB



6E6364



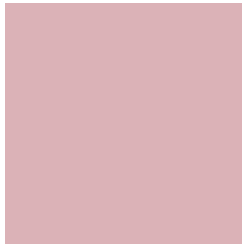
AD0015



2E0006

Previews

White Background



This preview shows how the Hex color DBB2B7 looks on a white background.

Color Contrast Check

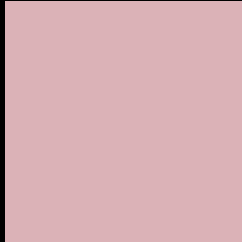
Large Text (above 18pt) WCAG AA × Fail

Any Text WCAG AA × Fail

Large Text (above 18pt) WCAG AAA × Fail

Any Text WCAG AAA × Fail

Black Background



This preview shows how the Hex color DBB2B7 looks on a black background.

Color Contrast Check

Large Text (above 18pt) WCAG AA ✓ Pass

Any Text WCAG AA ✓ Pass

Large Text (above 18pt) WCAG AAA ✓ Pass

Any Text WCAG AAA ✓ Pass

If you want to check with other color combinations, try the [Color Contrast Checker](#).

Hex DBB2B7 Background



This preview shows how black text looks on a background with the Hex color DBB2B7.



This preview shows how white text looks on a background with the Hex color DBB2B7.

Color Blindness Simulation

Color vision deficiency is a very complex topic, and I could not describe the different causes any better than Wikipedia does, so if you want to learn more, you should check out their [article about color blindness](#).

Dichromacy



Trichromacy



Original Color
DBB2B7

Protanomaly
C9B8BA

Deuteranomaly
D5B5B6

Tritanomaly
DCB1BC

Monochromacy



Original Color
DBB2B7

Achromatopsia
BFBFBF

Achromatomaly
C9BABC

CSS Examples

Text

The CSS property to change the color of the text to Hex DBB2B7 is called "color". The color property can be set on classes, ids or directly on the HTML element.

This example shows how text in the color #DBB2B7 looks like.

```
.text, #text, p{  
    color:#DBB2B7  
}
```

If you want to add a text shadow in that color use the text-shadow property, you can generate a text shadow directly with our [CSS Text Shadow Generator](#).

Here you see how black text with a 4 pixel #DBB2B7 colored shadow looks like.

```
.shadow{ text-shadow: 4px 4px 2px #DBB2B7
}
```

Border

The CSS property to change the border of an element to Hex DBB2B7 is called "border". The border property can be set on classes, ids or directly on the HTML element.

This example shows the color as border, it can be applied via the CSS property "border" or "border-color".

```
.border, #border, table{ border:4px solid
#DBB2B7 }
```

If only the border color should be changed use the property `border-color`.

```
.border{ border-color:#DBB2B7 }
```

If you want to add a box shadow in that color use:

Here you see how a box with a 4 pixel #DBB2B7 colored shadow looks like.

```
.boxshadow{ -moz-box-shadow:4px 4px 4px  
4px #DBB2B7; -webkit-box-shadow:4px 4px  
4px 4px #DBB2B7; box-shadow:4px 4px 4px  
4px #DBB2B7 }
```

Background

The CSS property to change the background color of an element to Hex DBB2B7 is called "background". The background property can be set on classes, ids or directly on the HTML element.

```
.background, #background, body{  
background:#DBB2B7 }
```

If only the background color should be changed can be used:

```
.background{ background-color:#DBB2B7 }
```

This example shows the color as background, it is applied via the CSS property "background".

To optimize and compress your CSS code, you can use our [online CSS compressor and optimizer](#) based on csstidy. If you want to create a linear or radial gradient as background or border, check our [CSS Gradient Generator](#).

Hey! You found this booklet interesting? Support Converting Colors with the new Membership Option!

The pro membership hides all ads, plus gives you double the colors in the color bucket, and more awesome pro features!

[Learn more, Memberships starting at \\$2.50/m!](#)

**Follow me
on Twitter!**

@ConvertingColor