

# Converting Colors

Hex(DBB3B3)

Have a look what the booklet for  
Hex(DBB3B3) contains.

<b>Hex(DBB3B3)</b> .....	3
<i><b>Conversions</b></i> .....	4
<i><b>Details</b></i> .....	6
<i><b>Harmonies</b></i> .....	11
<i><b>Previews</b></i> .....	23
<i><b>Color Blindness Simulation</b></i> .....	26
<i><b>CSS Examples</b></i> .....	29

# **Color**

**Hex(DBB3B3)**

# Conversions

## Conversions Part 1

Format	Color
Hex	DBB3B3
RGB	219, 179, 179
RGB Percent	86%, 70%, 70%
CMY	0.1412, 0.2980, 0.2980
CMYK	0.00, 0.18, 0.18, 0.14
HSL	0°, 36%, 78%
HSV	0°, 18%, 86%
XYZ	53.4702, 50.5549, 49.5877
YIQ	190.9600, 23.8400, 8.4800

# Conversions

## Conversions Part 2

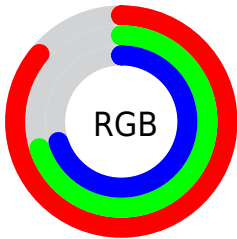
Format	Color
R <sub>Y</sub> B	219, 179, 179
Decimal	14398387
CIE Lab	76.41, 14.44, 5.45
CIE LCh	76, 15.438, 20.673
Yxy	50.5549, 0.3481, 0.3291
Android (android.graphics.Color)	4292588467 (0xFFDDBB3B3)
YUV	190.9600, -5.8963, 24.5911
Hunter-Lab	71.1020, 9.8073, 8.4216

# Details

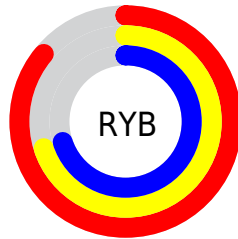
The Hex color **DBB3B3** is a light color, and the websafe version is hex **CC9999**. A complement of this color would be **B3DBDB**, and the grayscale version is **BFBFBF**.

A 20% lighter version of the original color is **FFE7E7**, and **A37E7E** is the 20% darker color. If you saturate the color by 10%, you get **DB9D9D**, and if you desaturate by 10%, it is **DBC9C9**.

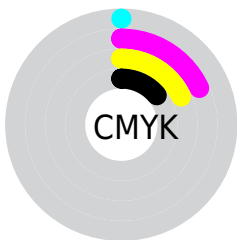
# Distribution



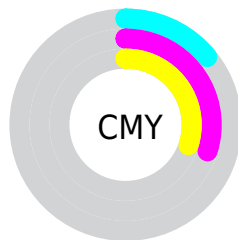
- Red (86%)
- Green (70%)
- Blue (70%)



- Red (86%)
- Yellow (70%)
- Blue (70%)



- Cyan (0%)
- Magenta (18%)
- Yellow (18%)
- Black (14%)



- Cyan (14%)
- Magenta (30%)
- Yellow (30%)

# Brightness & Saturation Gradients

These gradients show how the Hex color DBB3B3 changes by changing the brightness by 10 percent. The first figure shows a shift by +10% for each color and the second figure -10%.

Similar to the brightness gradients but the following saturation gradients show a change of the Hex color DBB3B3 by changing the saturation by 10% instead.



 DBB3B3

 DBB3B3

FFFFFF

 BF9898

 FFEBE8

 A37E7E

 896565

 6F4D4D

 563637

 3E2021

 280B0B

 000000

 DBB3B3

 DBB3B3

 DB9D9D

 DBC9C9

 DB8787

 DBDFDF

 DB7171

 DBF5F5

 DB5B5B

 DBFFFF

 DB4646

 DB3030

 DB1A1A

 DB0404

 DB0000

# Harmonies

## Analogous

The Analogous color harmony consists of three colors that are next to each other on the color wheel.



D7B3C2



DBB3B3



D7B6A7

# Triad

The Triadic color harmony groups three colors that are evenly spaced from another and form a triangle on the color wheel.



DBB3B3



ADC2AA



A8BFD8

# Complementary

The Complementary color scheme is a pair of colors which are on the opposite of each other on the color wheel.



DBB3B3



B3DBDB

# Split Complementary

Split-complementary colors differ from the complementary color scheme. The scheme consists of three colors, the original color and two neighbors of the complement color.



9BC3D2



DBB3B3



9FC5B7

# Square

The Square scheme is like the rectangle color scheme, but the four colors are evenly spaced on the color wheel.



DBB3B3



BDBFA2



98C5C6



BABAD7

# Rectangle

The Rectangle color scheme consists of four colors that form a rectangle on the color wheel.



DBB3B3



D1B8A2



98C5C6



A3C0D7

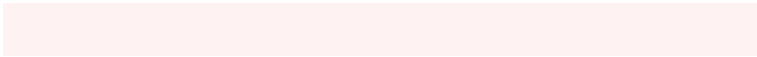


# Sweetspot

The Sweet Spot groups the original color and five complimentary colors.



DBB3B3



FFF2F2



DBB3DB



807878



000000



808080



# Same Dimension

The Same Dimension uses a secret algorithm to generate beautiful new colors.



DBB3B3



FFC7C7



DBC7B3



6E6363



AD0000



2E0000



# Inverse Universe

The Inverse Universe completely reimagines the original color for something new.



B3DBDB



C7FFFF



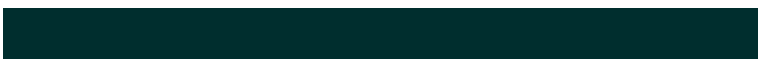
B3C7DB



636E6E



00ADAD

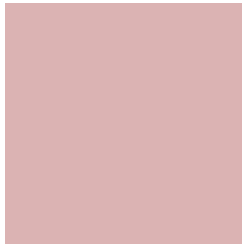


002E2E



# Previews

## White Background



This preview shows how the Hex color DBB3B3 looks on a white background.

## Color Contrast Check

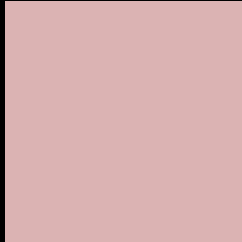
Large Text (above 18pt) WCAG AA × Fail

Any Text WCAG AA × Fail

Large Text (above 18pt) WCAG AAA × Fail

Any Text WCAG AAA × Fail

# Black Background



This preview shows how the Hex color DBB3B3 looks on a black background.

## Color Contrast Check

Large Text (above 18pt) WCAG AA ✓ Pass

Any Text WCAG AA ✓ Pass

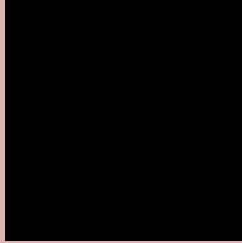
Large Text (above 18pt) WCAG AAA ✓ Pass

Any Text WCAG AAA ✓ Pass

If you want to check with other color combinations, try the [Color Contrast Checker](#).



## Hex DBB3B3 Background



This preview shows how black text looks on a background with the Hex color DBB3B3.



This preview shows how white text looks on a background with the Hex color DBB3B3.

# Color Blindness Simulation

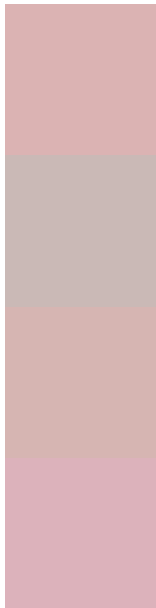
Color vision deficiency is a very complex topic, and I could not describe the different causes any better than Wikipedia does, so if you want to learn more, you should check out their [article about color blindness](#).

## Dichromacy





# Trichromacy



**Original Color**  
DBB3B3

**Protanomaly**  
CAB9B6

**Deuteranomaly**  
D6B5B2

**Tritanomaly**  
DCB2BB

# Monochromacy



**Original Color**  
DBB3B3

**Achromatopsia**  
BFBFBF

**Achromatomaly**  
C9BBBB

# CSS Examples

## Text

The CSS property to change the color of the text to Hex DBB3B3 is called "color". The color property can be set on classes, ids or directly on the HTML element.

This example shows how text in the color #DBB3B3 looks like.

```
.text, #text, p{  
    color:#DBB3B3  
}
```

If you want to add a text shadow in that color use the text-shadow property, you can generate a text shadow directly with our [CSS Text Shadow Generator](#).

Here you see how black text with a 4 pixel #DBB3B3 colored shadow looks like.

```
.shadow{ text-shadow: 4px 4px 2px #DBB3B3  
}
```

## Border

The CSS property to change the border of an element to Hex DBB3B3 is called "border". The border property can be set on classes, ids or directly on the HTML element.

This example shows the color as border, it can be applied via the CSS property "border" or "border-color".

```
.border, #border, table{ border:4px solid  
#DBB3B3 }
```

If only the border color should be changed use the property `border-color`.

```
.border{ border-color:#DBB3B3 }
```

If you want to add a box shadow in that color use:

Here you see how a box with a 4 pixel #DBB3B3 colored shadow looks like.

```
.boxshadow{ -moz-box-shadow:4px 4px 4px  
4px #DBB3B3; -webkit-box-shadow:4px 4px  
4px 4px #DBB3B3; box-shadow:4px 4px 4px  
4px #DBB3B3 }
```

# Background

The CSS property to change the background color of an element to Hex DBB3B3 is called "background". The background property can be set on classes, ids or directly on the HTML element.

```
.background, #background, body{  
background:#DBB3B3 }
```

If only the background color should be changed can be used:

```
.background{ background-color:#DBB3B3 }
```

This example shows the color as background, it is applied via the CSS property "background".

To optimize and compress your CSS code, you can use our [online CSS compressor and optimizer](#) based on csstidy. If you want to create a linear or radial gradient as background or border, check our [CSS Gradient Generator](#).



Hey! You found this booklet interesting? Support Converting Colors with the new Membership Option!

The pro membership hides all ads, plus gives you double the colors in the color bucket, and more awesome pro features!

**[Learn more, Memberships starting at \\$2.50/m!](#)**

**Follow me  
on Twitter!**

@ConvertingColor