

Converting Colors

Hex(DBB485)

Have a look what the booklet for
Hex(DBB485) contains.

Hex(DBB485)	3
<i>Conversions</i>	4
<i>Details</i>	6
<i>Harmonies</i>	11
<i>Previews</i>	23
<i>Color Blindness Simulation</i>	26
<i>CSS Examples</i>	29

Color

Hex(DBB485)

Conversions

Conversions Part 1

Format	Color
Hex	DBB485
RGB	219, 180, 133
RGB Percent	86%, 71%, 52%
CMY	0.1412, 0.2941, 0.4784
CMYK	0.00, 0.18, 0.39, 0.14
HSL	33°, 54%, 69%
HSV	33°, 39%, 86%
XYZ	49.7683, 49.3960, 29.1016
YIQ	186.3030, 38.3310, -6.3490

Conversions

Conversions Part 2

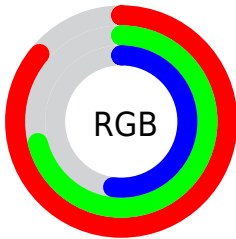
Format	Color
RYB	204, 219, 133
Decimal	14398597
CIELab	75.70, 7.76, 29.27
CIELCh	76, 30.279, 75.156
Yxy	49.3960, 0.3880, 0.3851
Android (android.graphics.Color)	4292588677 (0xFFDDBB485)
YUV	186.3030, -26.2784, 28.6753
Hunter-Lab	70.2823, 3.4054, 24.6476

Details

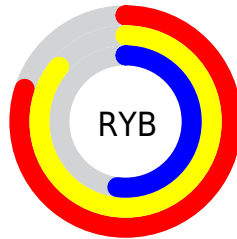
The Hex color **DBB485** is a light color, and the websafe version is hex **FFCC99**. A complement of this color would be **85ACDB**, and the grayscale version is **BBBBBB**.

A 20% lighter version of the original color is **FFECBB**, and **A27F53** is the 20% darker color. If you saturate the color by 10%, you get **DBAA6F**, and if you desaturate by 10%, it is **DBBE9B**.

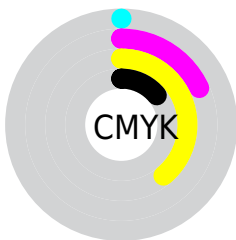
Distribution



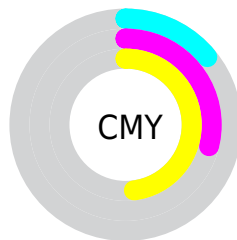
- Red (86%)
- Green (71%)
- Blue (52%)



- Red (80%)
- Yellow (86%)
- Blue (52%)



- Cyan (0%)
- Magenta (18%)
- Yellow (39%)
- Black (14%)



- Cyan (14%)
- Magenta (29%)
- Yellow (48%)

Brightness & Saturation Gradients

These gradients show how the Hex color DBB485 changes by changing the brightness by 10 percent. The first figure shows a shift by +10% for each color and the second figure -10%.

Similar to the brightness gradients but the following saturation gradients show a change of the Hex color DBB485 by changing the saturation by 10% instead.



DBB485



DBB485

FFFFFF



BE996B



FFECBB



A27F53



FFFFD6



87663B



FFFFF3



6D4E24



53380E



3A2200



220D00



000000



DBB485



DBB485

 DBAA6F

 DBBE9B

 DBA059

 DBC8B1

 DB9643

 DBD2C7

 DB8C2D

 DBDCDD

 DB8218

 DBE6F3

 DB7802

 DBF0FF

 DB7800

 DBFAFF

 DBFFFF

Harmonies

Analogous

The Analogous color harmony consists of three colors that are next to each other on the color wheel.



EDAB94



DBB485



COBD84

Triad

The Triadic color harmony groups three colors that are evenly spaced from another and form a triangle on the color wheel.



DBB485



68CAC8



D0AFE2

Complementary

The Complementary color scheme is a pair of colors which are on the opposite of each other on the color wheel.



DBB485



85ACDB

Split Complementary

Split-complementary colors differ from the complementary color scheme. The scheme consists of three colors, the original color and two neighbors of the complement color.



ABB8F0



DBB485



67C7E1

Square

The Square scheme is like the rectangle color scheme, but the four colors are evenly spaced on the color wheel.



DBB485



81C9AB



83C1F0



E9A7CA

Rectangle

The Rectangle color scheme consists of four colors that form a rectangle on the color wheel.



DBB485



ABC38C



83C1F0



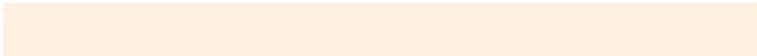
C5B2E8

Sweetspot

The Sweet Spot groups the original color and five complimentary colors.



DBB485



FFF1E0



DB85AD



80776E



000000



808080

Same Dimension

The Same Dimension uses a secret algorithm to generate beautiful new colors.



DBB485



FFC987



D8DB85



6E6963



AD5F00



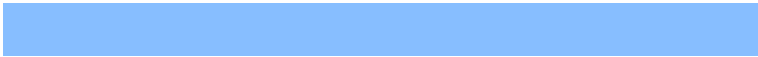
2E1900

Inverse Universe

The Inverse Universe completely reimagines the original color for something new.



85ACDB



87BEFF



8885DB



63686E



004FAD



00152E

Previews

White Background



This preview shows how the Hex color DBB485 looks on a white background.

Color Contrast Check

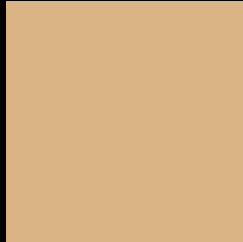
Large Text (above 18pt) WCAG AA × Fail

Any Text WCAG AA × Fail

Large Text (above 18pt) WCAG AAA × Fail

Any Text WCAG AAA × Fail

Black Background



This preview shows how the Hex color DBB485 looks on a black background.

Color Contrast Check

Large Text (above 18pt) WCAG AA ✓ Pass

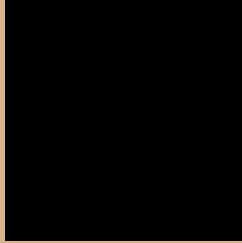
Any Text WCAG AA ✓ Pass

Large Text (above 18pt) WCAG AAA ✓ Pass

Any Text WCAG AAA ✓ Pass

If you want to check with other color combinations, try the [Color Contrast Checker](#).

Hex DBB485 Background



This preview shows how black text looks on a background with the Hex color DBB485.



This preview shows how white text looks on a background with the Hex color DBB485.

Color Blindness Simulation

Color vision deficiency is a very complex topic, and I could not describe the different causes any better than Wikipedia does, so if you want to learn more, you should check out their [article about color blindness](#).

Dichromacy



Original Color
DBB485

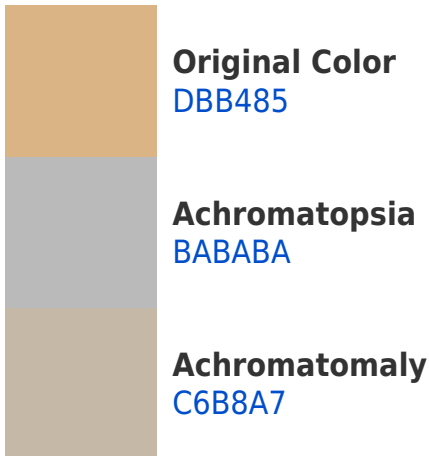
Protanopia
C9BB88

Deuteranopia
DEB385

Trichromacy



Monochromacy



CSS Examples

Text

The CSS property to change the color of the text to Hex DBB485 is called "color". The color property can be set on classes, ids or directly on the HTML element.

This example shows how text in the color #DBB485 looks like.

```
.text, #text, p{  
    color:#DBB485  
}
```

If you want to add a text shadow in that color use the text-shadow property, you can generate a text shadow directly with our [CSS Text Shadow Generator](#).

Here you see how black text with a 4 pixel #DBB485 colored shadow looks like.

```
.shadow{ text-shadow: 4px 4px 2px #DBB485
}
```

Border

The CSS property to change the border of an element to Hex DBB485 is called "border". The border property can be set on classes, ids or directly on the HTML element.

This example shows the color as border, it can be applied via the CSS property "border" or "border-color".

```
.border, #border, table{ border:4px solid
#DBB485 }
```

If only the border color should be changed use the property `border-color`.

```
.border{ border-color:#DBB485 }
```

If you want to add a box shadow in that color use:

Here you see how a box with a 4 pixel #DBB485 colored shadow looks like.

```
.boxshadow{ -moz-box-shadow:4px 4px 4px  
4px #DBB485; -webkit-box-shadow:4px 4px  
4px 4px #DBB485; box-shadow:4px 4px 4px  
4px #DBB485 }
```

Background

The CSS property to change the background color of an element to Hex DBB485 is called "background". The background property can be set on classes, ids or directly on the HTML element.

```
.background, #background, body{  
background:#DBB485 }
```

If only the background color should be changed can be used:

```
.background{ background-color:#DBB485 }
```

This example shows the color as background, it is applied via the CSS property "background".

To optimize and compress your CSS code, you can use our [online CSS compressor and optimizer](#) based on csstidy. If you want to create a linear or radial gradient as background or border, check our [CSS Gradient Generator](#).

Hey! You found this booklet interesting? Support Converting Colors with the new Membership Option!

The pro membership hides all ads, plus gives you double the colors in the color bucket, and more awesome pro features!

[Learn more, Memberships starting at \\$2.50/m!](#)

**Follow me
on Twitter!**

@ConvertingColor