

Converting Colors

Hex(DBB49D)

Have a look what the booklet for
Hex(DBB49D) contains.

Hex(DBB49D)	3
<i>Conversions</i>	4
<i>Details</i>	6
<i>Harmonies</i>	11
<i>Previews</i>	23
<i>Color Blindness Simulation</i>	26
<i>CSS Examples</i>	29

Color

Hex(DBB49D)

Conversions

Conversions Part 1

Format	Color
Hex	DBB49D
RGB	219, 180, 157
RGB Percent	86%, 71%, 62%
CMY	0.1412, 0.2941, 0.3843
CMYK	0.00, 0.18, 0.28, 0.14
HSL	22°, 46%, 74%
HSV	22°, 28%, 86%
XYZ	51.6205, 50.1369, 38.8550
YIQ	189.0390, 30.6270, 1.1150

Conversions

Conversions Part 2

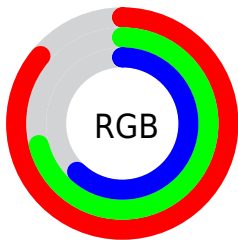
Format	Color
R_{YB}	219, 194, 157
Decimal	14398621
CIE _{Lab}	76.15, 10.73, 17.03
CIE _{LCh}	76, 20.124, 57.781
Yxy	50.1369, 0.3671, 0.3566
Android (android.graphics.Color)	4292588701 (0xFFDDBB49D)
YUV	189.0390, -15.7952, 26.2758
Hunter-Lab	70.8074, 6.2182, 17.0303

Details

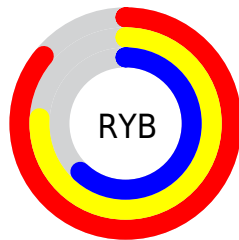
The Hex color **DBB49D** is a light color, and the websafe version is hex **CC9999**. A complement of this color would be **9DC4DB**, and the grayscale version is **BDBDBD**.

A 20% lighter version of the original color is **FFECD4**, and **A37F6A** is the 20% darker color. If you saturate the color by 10%, you get **DBA687**, and if you desaturate by 10%, it is **DBC2B3**.

Distribution



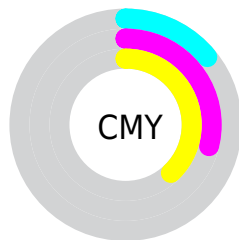
- Red (86%)
- Green (71%)
- Blue (62%)



- Red (86%)
- Yellow (76%)
- Blue (62%)



- Cyan (0%)
- Magenta (18%)
- Yellow (28%)
- Black (14%)



- Cyan (14%)
- Magenta (29%)
- Yellow (38%)

Brightness & Saturation Gradients

These gradients show how the Hex color DBB49D changes by changing the brightness by 10 percent. The first figure shows a shift by +10% for each color and the second figure -10%.

Similar to the brightness gradients but the following saturation gradients show a change of the Hex color DBB49D by changing the saturation by 10% instead.

 DBB49D

 DBB49D


FFFFFF

 BF9983

 FFECD4

 A37F6A

 FFFFF0

 886651

 6E4E3A

 553724

 3C2210

 260D00

 000000

 DBB49D

 DBB49D

 DBA687

 DBC2B3

 DB9871

 DBD0C9

 DB8B5B

 DBDDDF

 DB7D45

 DBEBF5

 DB6F30

 DBF9FF

 DB611A

 DBFFFF

 DB5404

 DB5100

Harmonies

Analogous

The Analogous color harmony consists of three colors that are next to each other on the color wheel.



E2B0AB



DBB49D



CCBA97

Triad

The Triadic color harmony groups three colors that are evenly spaced from another and form a triangle on the color wheel.



DBB49D



91C6BA



BDB8DD

Complementary

The Complementary color scheme is a pair of colors which are on the opposite of each other on the color wheel.



DBB49D



9DC4DB

Split Complementary

Split-complementary colors differ from the complementary color scheme. The scheme consists of three colors, the original color and two neighbors of the complement color.



A5BEE0



DBB49D



89C6CC

Square

The Square scheme is like the rectangle color scheme, but the four colors are evenly spaced on the color wheel.



DBB49D



A2C4A7



91C3DB



D3B2D0

Rectangle

The Rectangle color scheme consists of four colors that form a rectangle on the color wheel.



DBB49D



BEBE98



91C3DB



B5BADF

Sweetspot

The Sweet Spot groups the original color and five complimentary colors.



DBB49D



FFF2EB



DB9DC4



807773



000000



808080

Same Dimension

The Same Dimension uses a secret algorithm to generate beautiful new colors.



DBB49D



FFC8A8



DBD39D



6E6763



AD4000



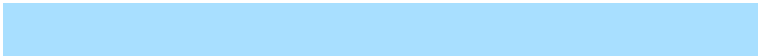
2E1100

Inverse Universe

The Inverse Universe completely reimagines the original color for something new.



9DC4DB



A8DFFF



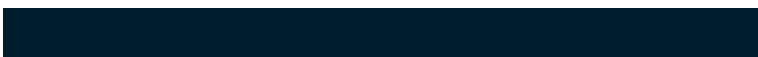
9DA5DB



636A6E



006DAD



001D2E

Previews

White Background



This preview shows how the Hex color DBB49D looks on a white background.

Color Contrast Check

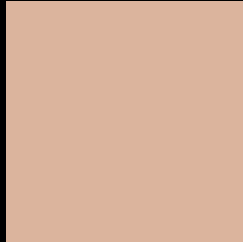
Large Text (above 18pt) WCAG AA × Fail

Any Text WCAG AA × Fail

Large Text (above 18pt) WCAG AAA × Fail

Any Text WCAG AAA × Fail

Black Background



This preview shows how the Hex color DBB49D looks on a black background.

Color Contrast Check

Large Text (above 18pt) WCAG AA ✓ Pass

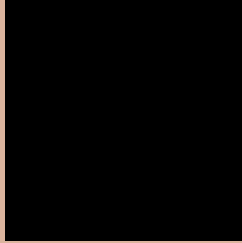
Any Text WCAG AA ✓ Pass

Large Text (above 18pt) WCAG AAA ✓ Pass

Any Text WCAG AAA ✓ Pass

If you want to check with other color combinations, try the [Color Contrast Checker](#).

Hex DBB49D Background



This preview shows how black text looks on a background with the Hex color DBB49D.

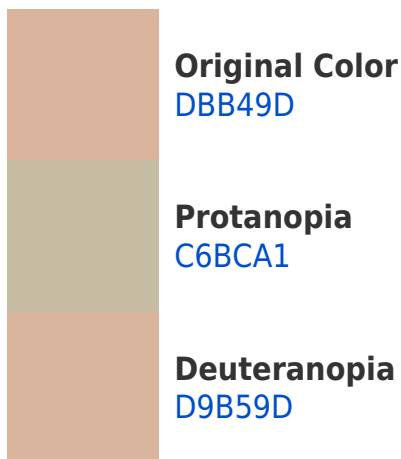


This preview shows how white text looks on a background with the Hex color DBB49D.

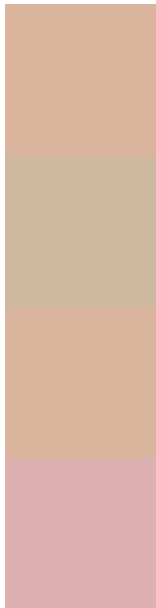
Color Blindness Simulation

Color vision deficiency is a very complex topic, and I could not describe the different causes any better than Wikipedia does, so if you want to learn more, you should check out their [article about color blindness](#).

Dichromacy



Trichromacy



Original Color
DBB49D

Protanomaly
CEB9A0

Deuteranomaly
DAB59D

Tritanomaly
DEB1B1

Monochromacy



Original Color
DBB49D

Achromatopsia
BDBDBD

Achromatomaly
C8BAB1

CSS Examples

Text

The CSS property to change the color of the text to Hex DBB49D is called "color". The color property can be set on classes, ids or directly on the HTML element.

This example shows how text in the color #DBB49D looks like.

```
.text, #text, p{  
    color:#DBB49D  
}
```

If you want to add a text shadow in that color use the text-shadow property, you can generate a text shadow directly with our [CSS Text Shadow Generator](#).

Here you see how black text with a 4 pixel #DBB49D colored shadow looks like.

```
.shadow{ text-shadow: 4px 4px 2px #DBB49D
}
```

Border

The CSS property to change the border of an element to Hex DBB49D is called "border". The border property can be set on classes, ids or directly on the HTML element.

This example shows the color as border, it can be applied via the CSS property "border" or "border-color".

```
.border, #border, table{ border:4px solid
#DBB49D }
```

If only the border color should be changed use the property `border-color`.

```
.border{ border-color:#DBB49D }
```

If you want to add a box shadow in that color use:

Here you see how a box with a 4 pixel #DBB49D colored shadow looks like.

```
.boxshadow{ -moz-box-shadow:4px 4px 4px  
4px #DBB49D; -webkit-box-shadow:4px 4px  
4px 4px #DBB49D; box-shadow:4px 4px 4px  
4px #DBB49D }
```

Background

The CSS property to change the background color of an element to Hex DBB49D is called "background". The background property can be set on classes, ids or directly on the HTML element.

```
.background, #background, body{  
background:#DBB49D }
```

If only the background color should be changed can be used:

```
.background{ background-color:#DBB49D }
```

This example shows the color as background, it is applied via the CSS property "background".

To optimize and compress your CSS code, you can use our [online CSS compressor and optimizer](#) based on csstidy. If you want to create a linear or radial gradient as background or border, check our [CSS Gradient Generator](#).

Hey! You found this booklet interesting? Support Converting Colors with the new Membership Option!

The pro membership hides all ads, plus gives you double the colors in the color bucket, and more awesome pro features!

[Learn more, Memberships starting at \\$2.50/m!](#)

**Follow me
on Twitter!**

@ConvertingColor