

Converting Colors

Hex(DBB5B0)

Have a look what the booklet for
Hex(DBB5B0) contains.

Hex(DBB5B0)	3
<i>Conversions</i>	4
<i>Details</i>	6
<i>Harmonies</i>	11
<i>Previews</i>	23
<i>Color Blindness Simulation</i>	26
<i>CSS Examples</i>	29

Color

Hex(DBB5B0)

Conversions

Conversions Part 1

Format	Color
Hex	DBB5B0
RGB	219, 181, 176
RGB Percent	86%, 71%, 69%
CMY	0.1412, 0.2902, 0.3098
CMYK	0.00, 0.17, 0.20, 0.14
HSL	7°, 37%, 77%
HSV	7°, 20%, 86%
XYZ	53.5738, 51.2424, 48.1414
YIQ	191.7920, 24.2530, 6.5010

Conversions

Conversions Part 2

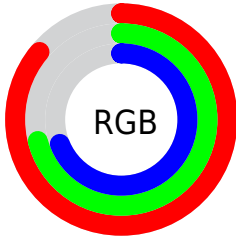
Format	Color
RYB	219, 182, 176
Decimal	14398896
CIELab	76.83, 12.91, 7.68
CIELCh	77, 15.024, 30.742
Yxy	51.2424, 0.3503, 0.3350
Android (android.graphics.Color)	4292588976 (0xFFDDBB5B0)
YUV	191.7920, -7.7855, 23.8614
Hunter-Lab	71.5838, 8.3189, 10.2350

Details

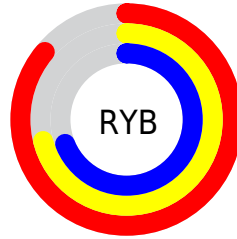
The Hex color **DBB5B0** is a light color, and the websafe version is hex **CC9999**. A complement of this color would be **B0D6DB**, and the grayscale version is **C0C0C0**.

A 20% lighter version of the original color is **FFEDE8**, and **A3807C** is the 20% darker color. If you saturate the color by 10%, you get **DBA29A**, and if you desaturate by 10%, it is **DBC8C6**.

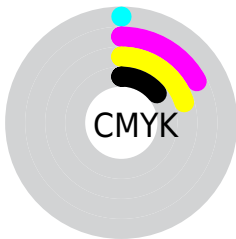
Distribution



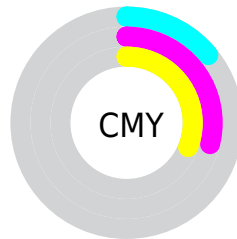
- Red (86%)
- Green (71%)
- Blue (69%)



- Red (86%)
- Yellow (71%)
- Blue (69%)



- Cyan (0%)
- Magenta (17%)
- Yellow (20%)
- Black (14%)



- Cyan (14%)
- Magenta (29%)
- Yellow (31%)

Brightness & Saturation Gradients

These gradients show how the Hex color DBB5B0 changes by changing the brightness by 10 percent. The first figure shows a shift by +10% for each color and the second figure -10%.

Similar to the brightness gradients but the following saturation gradients show a change of the Hex color DBB5B0 by changing the saturation by 10% instead.

 DBB5B0

 DBB5B0

FFFFFF

 BF9A95

 FFEDE8

 A3807C

 896763

 6F4F4B

 563834

 3E221F

 280D07

 000000

 DBB5B0

 DBB5B0

 DBA29A

 DBC8C6

 DB8E84

 DBDCDC

 DB7B6E

 DBEFF2

 DB6858

 DBFFFF

 DB5442

 DB412D

 DB2E17

 DB1A01

 DB1900

Harmonies

Analogous

The Analogous color harmony consists of three colors that are next to each other on the color wheel.



DAB4BE



DBB5B0



D5B8A6

Triad

The Triadic color harmony groups three colors that are evenly spaced from another and form a triangle on the color wheel.



DBB5B0



A9C4B0



AFBFD9

Complementary

The Complementary color scheme is a pair of colors which are on the opposite of each other on the color wheel.



DBB5B0



B0D6DB

Split Complementary

Split-complementary colors differ from the complementary color scheme. The scheme consists of three colors, the original color and two neighbors of the complement color.



A0C3D5



DBB5B0



9EC6BD

Square

The Square scheme is like the rectangle color scheme, but the four colors are evenly spaced on the color wheel.



DBB5B0



B9C1A6



9AC5CB



C1BAD5

Rectangle

The Rectangle color scheme consists of four colors that form a rectangle on the color wheel.



DBB5B0



CDBBA2



9AC5CB



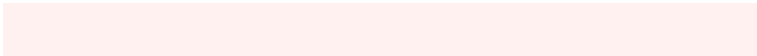
A9C0D9

Sweetspot

The Sweet Spot groups the original color and five complimentary colors.



DBB5B0



FFF1F0



DBB0D7



807877



000000



808080

Same Dimension

The Same Dimension uses a secret algorithm to generate beautiful new colors.



DBB5B0



FFC9C2



DBCAB0



6E6463



AD1400



2E0500

Inverse Universe

The Inverse Universe completely reimagines the original color for something new.



B0D6DB



C2F8FF



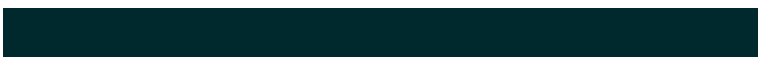
B0C1DB



636C6E



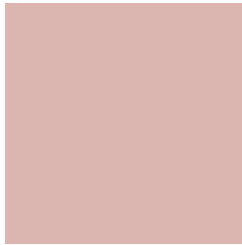
0099AD



00292E

Previews

White Background



This preview shows how the Hex color DBB5B0 looks on a white background.

Color Contrast Check

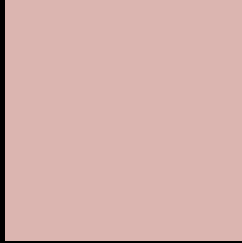
Large Text (above 18pt) WCAG AA × Fail

Any Text WCAG AA × Fail

Large Text (above 18pt) WCAG AAA × Fail

Any Text WCAG AAA × Fail

Black Background



This preview shows how the Hex color DBB5B0 looks on a black background.

Color Contrast Check

Large Text (above 18pt) WCAG AA ✓ Pass

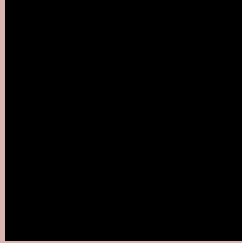
Any Text WCAG AA ✓ Pass

Large Text (above 18pt) WCAG AAA ✓ Pass

Any Text WCAG AAA ✓ Pass

If you want to check with other color combinations, try the [Color Contrast Checker](#).

Hex DBB5B0 Background



This preview shows how black text looks on a background with the Hex color DBB5B0.

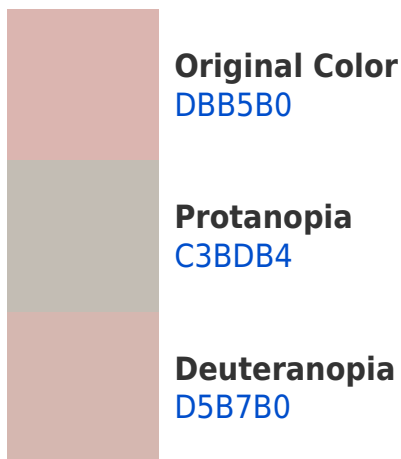


This preview shows how white text looks on a background with the Hex color DBB5B0.

Color Blindness Simulation

Color vision deficiency is a very complex topic, and I could not describe the different causes any better than Wikipedia does, so if you want to learn more, you should check out their [article about color blindness](#).

Dichromacy





Tritanopia
DDB3C0

Trichromacy



Original Color
DBB5B0

Protanomaly
CCBAB3

Deuteranomaly
D7B6B0

Tritanomaly
DCB4BA

Monochromacy



Original Color
DBB5B0

Achromatopsia
C0C0C0

Achromatomaly
CABCBA

CSS Examples

Text

The CSS property to change the color of the text to Hex DBB5B0 is called "color". The color property can be set on classes, ids or directly on the HTML element.

This example shows how text in the color #DBB5B0 looks like.

```
.text, #text, p{  
    color:#DBB5B0  
}
```

If you want to add a text shadow in that color use the text-shadow property, you can generate a text shadow directly with our [CSS Text Shadow Generator](#).

Here you see how black text with a 4 pixel #DBB5B0 colored shadow looks like.

```
.shadow{ text-shadow: 4px 4px 2px #DBB5B0
}
```

Border

The CSS property to change the border of an element to Hex DBB5B0 is called "border". The border property can be set on classes, ids or directly on the HTML element.

This example shows the color as border, it can be applied via the CSS property "border" or "border-color".

```
.border, #border, table{ border:4px solid
#DBB5B0 }
```

If only the border color should be changed use the property `border-color`.

```
.border{ border-color:#DBB5B0 }
```

If you want to add a box shadow in that color use:

Here you see how a box with a 4 pixel #DBB5B0 colored shadow looks like.

```
.boxshadow{ -moz-box-shadow:4px 4px 4px  
4px #DBB5B0; -webkit-box-shadow:4px 4px  
4px 4px #DBB5B0; box-shadow:4px 4px 4px  
4px #DBB5B0 }
```

Background

The CSS property to change the background color of an element to Hex DBB5B0 is called "background". The background property can be set on classes, ids or directly on the HTML element.

```
.background, #background, body{  
background:#DBB5B0 }
```

If only the background color should be changed can be used:

```
.background{ background-color:#DBB5B0 }
```

This example shows the color as background, it is applied via the CSS property "background".

To optimize and compress your CSS code, you can use our [online CSS compressor and optimizer](#) based on csstidy. If you want to create a linear or radial gradient as background or border, check our [CSS Gradient Generator](#).

Hey! You found this booklet interesting? Support Converting Colors with the new Membership Option!

The pro membership hides all ads, plus gives you double the colors in the color bucket, and more awesome pro features!

[Learn more, Memberships starting at \\$2.50/m!](#)

**Follow me
on Twitter!**

@ConvertingColor