

Converting Colors

Hex(DBB6BC)

Have a look what the booklet for
Hex(DBB6BC) contains.

Hex(DBB6BC)	3
<i>Conversions</i>	4
<i>Details</i>	6
<i>Harmonies</i>	11
<i>Previews</i>	23
<i>Color Blindness Simulation</i>	26
<i>CSS Examples</i>	29

Color

Hex(DBB6BC)

Conversions

Conversions Part 1

Format	Color
Hex	DBB6BC
RGB	219, 182, 188
RGB Percent	86%, 71%, 74%
CMY	0.1412, 0.2863, 0.2627
CMYK	0.00, 0.17, 0.14, 0.14
HSL	350°, 34%, 79%
HSV	350°, 17%, 86%
XYZ	55.0185, 52.1468, 54.7425
YIQ	193.7470, 20.1260, 9.7100

Conversions

Conversions Part 2

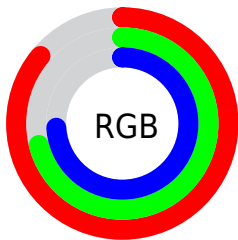
Format	Color
R _Y B	219, 182, 188
Decimal	14399164
CIE Lab	77.37, 14.25, 1.95
CIE LCh	77, 14.385, 7.783
Yxy	52.1468, 0.3398, 0.3221
Android (android.graphics.Color)	4292589244 (0xFFDDBB6BC)
YUV	193.7470, -2.8333, 22.1469
Hunter-Lab	72.2127, 9.6258, 5.6028

Details

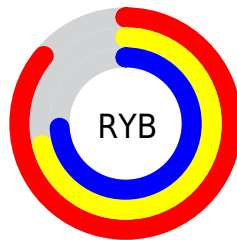
The Hex color **DBB6BC** is a light color, and the websafe version is hex **FFCCCC**. A complement of this color would be **B6DBD5**, and the grayscale version is **C2C2C2**.

A 20% lighter version of the original color is **FFEEF4**, and **A48187** is the 20% darker color. If you saturate the color by 10%, you get **DBA0AA**, and if you desaturate by 10%, it is **DBCCCE**.

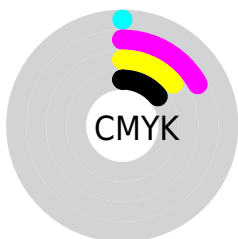
Distribution



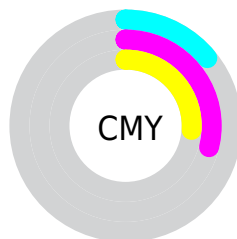
- Red (86%)
- Green (71%)
- Blue (74%)



- Red (86%)
- Yellow (71%)
- Blue (74%)



- Cyan (0%)
- Magenta (17%)
- Yellow (14%)
- Black (14%)



- Cyan (14%)
- Magenta (29%)
- Yellow (26%)

Brightness & Saturation Gradients

These gradients show how the Hex color DBB6BC changes by changing the brightness by 10 percent. The first figure shows a shift by +10% for each color and the second figure -10%.

Similar to the brightness gradients but the following saturation gradients show a change of the Hex color DBB6BC by changing the saturation by 10% instead.

 DBB6BC

FFFFFF

 FFEEF4

 DBB6BC

 BF9BA1

 A48187


 89686E

 6F5055

 56383E

 3F2328

 280E14

 080000

 000000

 DBB6BC

 DBB6BC

 DBA0AA

 DBCCCE

 DB8A97

 DBE2E1

 DB7485

 DBF8F3

 DB5E73

 DBFFFF

 DB4960

 DB334E

 DB1D3C

 DB0729

 DB0024

Harmonies

Analogous

The Analogous color harmony consists of three colors that are next to each other on the color wheel.



D4B7C9



DBB6BC



DBB7AF

Triad

The Triadic color harmony groups three colors that are evenly spaced from another and form a triangle on the color wheel.



DBB6BC



B7C3AA



A6C3D7

Complementary

The Complementary color scheme is a pair of colors which are on the opposite of each other on the color wheel.



DBB6BC



B6DBD5

Split Complementary

Split-complementary colors differ from the complementary color scheme. The scheme consists of three colors, the original color and two neighbors of the complement color.



9EC6CF



DBB6BC



A9C6B5

Square

The Square scheme is like the rectangle color scheme, but the four colors are evenly spaced on the color wheel.



DBB6BC



C6BFA5



9FC7C2



B5BFD9

Rectangle

The Rectangle color scheme consists of four colors that form a rectangle on the color wheel.



DBB6BC



D6BAA9



9FC7C2



A2C4D5

Sweetspot

The Sweet Spot groups the original color and five complimentary colors.



DBB6BC



FFF2F4



D5B6DB



807879



000000



808080

Same Dimension

The Same Dimension uses a secret algorithm to generate beautiful new colors.



DBB6BC



FFCCD4



DBC2B6



6E6364



AD001C



2E0007

Inverse Universe

The Inverse Universe completely reimagines the original color for something new.



DBB6BC



FFCCD4



B6CFDB



6E6364



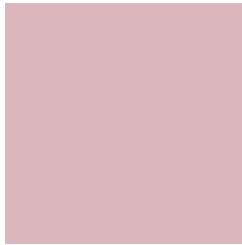
AD001C



2E0007

Previews

White Background



This preview shows how the Hex color DBB6BC looks on a white background.

Color Contrast Check

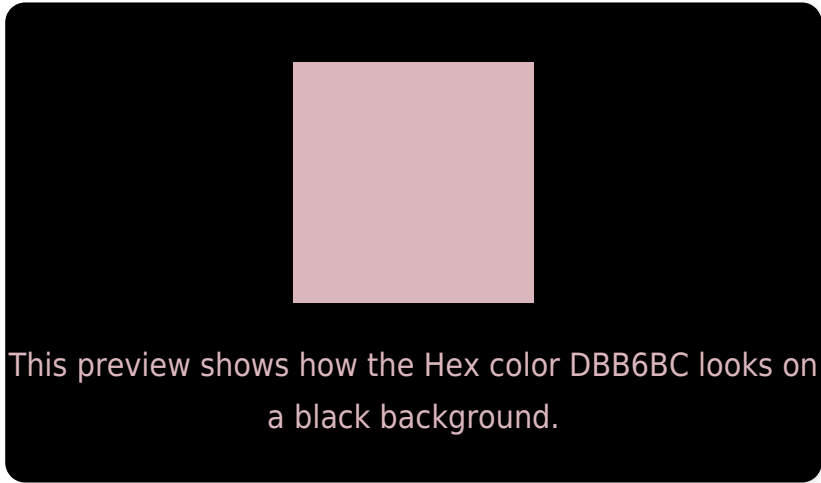
Large Text (above 18pt) WCAG AA × Fail

Any Text WCAG AA × Fail

Large Text (above 18pt) WCAG AAA × Fail

Any Text WCAG AAA × Fail

Black Background



Color Contrast Check

Large Text (above 18pt) WCAG AA ✓ Pass

Any Text WCAG AA ✓ Pass

Large Text (above 18pt) WCAG AAA ✓ Pass

Any Text WCAG AAA ✓ Pass

If you want to check with other color combinations, try the [Color Contrast Checker](#).

Hex DBB6BC Background



This preview shows how black text looks on a background with the Hex color DBB6BC.

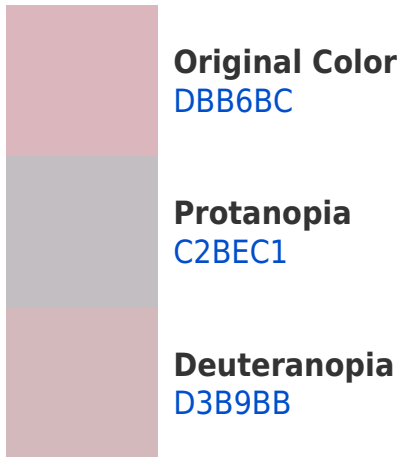


This preview shows how white text looks on a background with the Hex color DBB6BC.

Color Blindness Simulation

Color vision deficiency is a very complex topic, and I could not describe the different causes any better than Wikipedia does, so if you want to learn more, you should check out their [article about color blindness](#).

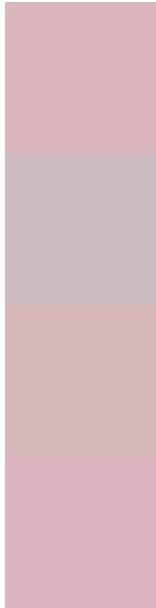
Dichromacy





Tritanopia
DCB5C3

Trichromacy



Original Color
DBB6BC

Protanomaly
CBBBBF

Deuteranomaly
D6B8BB

Tritanomaly
DCB5C0

Monochromacy



Original Color
DBB6BC

Achromatopsia
C2C2C2

Achromatomaly
CBBEC0

CSS Examples

Text

The CSS property to change the color of the text to Hex DBB6BC is called "color". The color property can be set on classes, ids or directly on the HTML element.

This example shows how text in the color #DBB6BC looks like.

```
.text, #text, p{  
    color:#DBB6BC  
}
```

If you want to add a text shadow in that color use the text-shadow property, you can generate a text shadow directly with our [CSS Text Shadow Generator](#).

Here you see how black text with a 4 pixel #DBB6BC colored shadow looks like.

```
.shadow{ text-shadow: 4px 4px 2px #DBB6BC  
}
```

Border

The CSS property to change the border of an element to Hex DBB6BC is called "border". The border property can be set on classes, ids or directly on the HTML element.

This example shows the color as border, it can be applied via the CSS property "border" or "border-color".

```
.border, #border, table{ border:4px solid  
#DBB6BC }
```

If only the border color should be changed use the property `border-color`.

```
.border{ border-color:#DBB6BC }
```

If you want to add a box shadow in that color use:

Here you see how a box with a 4 pixel #DBB6BC colored shadow looks like.

```
.boxshadow{ -moz-box-shadow:4px 4px 4px  
4px #DBB6BC; -webkit-box-shadow:4px 4px  
4px 4px #DBB6BC; box-shadow:4px 4px 4px  
4px #DBB6BC }
```

Background

The CSS property to change the background color of an element to Hex DBB6BC is called "background". The background property can be set on classes, ids or directly on the HTML element.

```
.background, #background, body{  
background:#DBB6BC }
```

If only the background color should be changed can be used:

```
.background{ background-color:#DBB6BC }
```

This example shows the color as background, it is applied via the CSS property "background".

To optimize and compress your CSS code, you can use our [online CSS compressor and optimizer](#) based on csstidy. If you want to create a linear or radial gradient as background or border, check our [CSS Gradient Generator](#).

Hey! You found this booklet interesting? Support Converting Colors with the new Membership Option!

The pro membership hides all ads, plus gives you double the colors in the color bucket, and more awesome pro features!

[Learn more, Memberships starting at \\$2.50/m!](#)

**Follow me
on Twitter!**

@ConvertingColor