

Converting Colors

Hex(DBB9BE)

Have a look what the booklet for
Hex(DBB9BE) contains.

Hex(DBB9BE)	3
<i>Conversions</i>	4
<i>Details</i>	6
<i>Harmonies</i>	11
<i>Previews</i>	23
<i>Color Blindness Simulation</i>	26
<i>CSS Examples</i>	29

Color

Hex(DBB9BE)

Conversions

Conversions Part 1

Format	Color
Hex	DBB9BE
RGB	219, 185, 190
RGB Percent	86%, 73%, 75%
CMY	0.1412, 0.2745, 0.2549
CMYK	0.00, 0.16, 0.13, 0.14
HSL	351°, 32%, 79%
HSV	351°, 16%, 86%
XYZ	55.8566, 53.4757, 56.0931
YIQ	195.7360, 18.6590, 8.7630

Conversions

Conversions Part 2

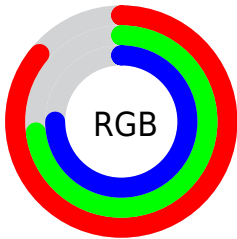
Format	Color
R_{YB}	219, 185, 190
Decimal	14399934
CIE _{Lab}	78.16, 12.97, 2.01
CIE _{LCh}	78, 13.122, 8.797
Yxy	53.4757, 0.3377, 0.3233
Android (android.graphics.Color)	4292590014 (0xFFDDBB9BE)
YUV	195.7360, -2.8278, 20.4025
Hunter-Lab	73.1271, 8.3712, 5.7098

Details

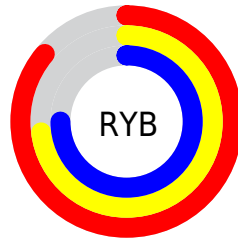
The Hex color **DBB9BE** is a light color, and the websafe version is hex **FFCCCC**. A complement of this color would be **B9DBD6**, and the grayscale version is **C4C4C4**.

A 20% lighter version of the original color is **FFF1F6**, and **A48489** is the 20% darker color. If you saturate the color by 10%, you get **DBA3AB**, and if you desaturate by 10%, it is **DBCFD1**.

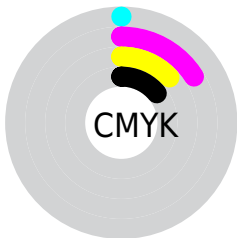
Distribution



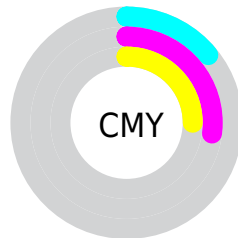
- Red (86%)
- Green (73%)
- Blue (75%)



- Red (86%)
- Yellow (73%)
- Blue (75%)



- Cyan (0%)
- Magenta (16%)
- Yellow (13%)
- Black (14%)



- Cyan (14%)
- Magenta (27%)
- Yellow (25%)

Brightness & Saturation Gradients

These gradients show how the Hex color `DBB9BE` changes by changing the brightness by 10 percent. The first figure shows a shift by +10% for each color and the second figure -10%.

Similar to the brightness gradients but the following saturation gradients show a change of the Hex color `DBB9BE` by changing the saturation by 10% instead.

 DBB9BE

 DBB9BE

FFFFFF

 BF9EA3

 FFF1F6

 A48489

 896B6F

 6F5257

 573B40

 3F252A

 281115

 0D0000

 000000

 DBB9BE

 DBB9BE

 DBA3AB

 DBCFD1

 DB8D99

 DBE5E3

 DB7786

 DBFBF6

 DB6173

 DBFFFF

 DB4C61

 DB364E

 DB203B

 DB0A29

 DB0020

Harmonies

Analogous

The Analogous color harmony consists of three colors that are next to each other on the color wheel.



D5BACA



DBB9BE



DABAB3

Triad

The Triadic color harmony groups three colors that are evenly spaced from another and form a triangle on the color wheel.



DBB9BE



BAC5AE



ABC5D8

Complementary

The Complementary color scheme is a pair of colors which are on the opposite of each other on the color wheel.



DBB9BE



B9DBD6

Split Complementary

Split-complementary colors differ from the complementary color scheme. The scheme consists of three colors, the original color and two neighbors of the complement color.



A3C8D0



DBB9BE



ACC8B8

Square

The Square scheme is like the rectangle color scheme, but the four colors are evenly spaced on the color wheel.



DBB9BE



C8C2A9



A4C9C4



B9C1D9

Rectangle

The Rectangle color scheme consists of four colors that form a rectangle on the color wheel.



DBB9BE



D6BCAD



A4C9C4



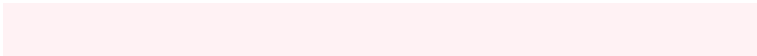
A7C6D6

Sweetspot

The Sweet Spot groups the original color and five complimentary colors.



DBB9BE



FFF2F4



D6B9DB



807879



000000



808080

Same Dimension

The Same Dimension uses a secret algorithm to generate beautiful new colors.



DBB9BE



FFCFD6



DBC5B9



6E6364



AD001A



2E0007

Inverse Universe

The Inverse Universe completely reimagines the original color for something new.



DBB9BE



FFCFD6



B9CFDB



6E6364



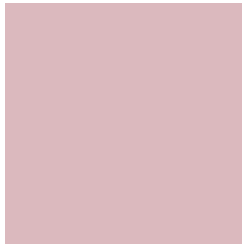
AD001A



2E0007

Previews

White Background



This preview shows how the Hex color DBB9BE looks on a white background.

Color Contrast Check

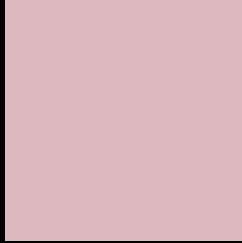
Large Text (above 18pt) WCAG AA × Fail

Any Text WCAG AA × Fail

Large Text (above 18pt) WCAG AAA × Fail

Any Text WCAG AAA × Fail

Black Background



This preview shows how the Hex color DBB9BE looks on a black background.

Color Contrast Check

Large Text (above 18pt) WCAG AA ✓ Pass

Any Text WCAG AA ✓ Pass

Large Text (above 18pt) WCAG AAA ✓ Pass

Any Text WCAG AAA ✓ Pass

If you want to check with other color combinations, try the [Color Contrast Checker](#).

Hex DBB9BE Background



This preview shows how black text looks on a background with the Hex color DBB9BE.



This preview shows how white text looks on a background with the Hex color DBB9BE.

Color Blindness Simulation

Color vision deficiency is a very complex topic, and I could not describe the different causes any better than Wikipedia does, so if you want to learn more, you should check out their [article about color blindness](#).

Dichromacy



Original Color
DBB9BE

Protanopia
C5C0C2

Deuteranopia
D5BBBE



Tritanopia
DCB8C6

Trichromacy



Original Color
DBB9BE

Protanomaly
CDBDC1

Deuteranomaly
D7BABE

Tritanomaly
DCB8C3

Monochromacy



Original Color
DBB9BE

Achromatopsia
C4C4C4

Achromatomaly
CCC0C2

CSS Examples

Text

The CSS property to change the color of the text to Hex DBB9BE is called "color". The color property can be set on classes, ids or directly on the HTML element.

This example shows how text in the color #DBB9BE looks like.

```
.text, #text, p{  
    color:#DBB9BE  
}
```

If you want to add a text shadow in that color use the text-shadow property, you can generate a text shadow directly with our [CSS Text Shadow Generator](#).

Here you see how black text with a 4 pixel #DBB9BE colored shadow looks like.

```
.shadow{ text-shadow: 4px 4px 2px #DBB9BE }  
}
```

Border

The CSS property to change the border of an element to Hex DBB9BE is called "border". The border property can be set on classes, ids or directly on the HTML element.

This example shows the color as border, it can be applied via the CSS property "border" or "border-color".

```
.border, #border, table{ border:4px solid #DBB9BE }  
}
```

If only the border color should be changed use the property `border-color`.

```
.border{ border-color:#DBB9BE }
```

If you want to add a box shadow in that color use:

Here you see how a box with a 4 pixel #DBB9BE colored shadow looks like.

```
.boxshadow{ -moz-box-shadow:4px 4px 4px  
4px #DBB9BE; -webkit-box-shadow:4px 4px  
4px 4px #DBB9BE; box-shadow:4px 4px 4px  
4px #DBB9BE }
```

Background

The CSS property to change the background color of an element to Hex DBB9BE is called "background". The background property can be set on classes, ids or directly on the HTML element.

```
.background, #background, body{  
background:#DBB9BE }
```

If only the background color should be changed can be used:

```
.background{ background-color:#DBB9BE }
```

This example shows the color as background, it is applied via the CSS property "background".

To optimize and compress your CSS code, you can use our [online CSS compressor and optimizer](#) based on csstidy. If you want to create a linear or radial gradient as background or border, check our [CSS Gradient Generator](#).

Hey! You found this booklet interesting? Support Converting Colors with the new Membership Option!

The pro membership hides all ads, plus gives you double the colors in the color bucket, and more awesome pro features!

[Learn more, Memberships starting at \\$2.50/m!](#)

**Follow me
on Twitter!**

@ConvertingColor