

# Converting Colors

Hex(DBBA94)

Have a look what the booklet for  
Hex(DBBA94) contains.

<b>Hex(DBBA94)</b> .....	3
<b><i>Conversions</i></b> .....	4
<b><i>Details</i></b> .....	6
<b><i>Harmonies</i></b> .....	11
<b><i>Previews</i></b> .....	23
<b><i>Color Blindness Simulation</i></b> .....	26
<b><i>CSS Examples</i></b> .....	29

# **Color**

**Hex(DBBA94)**

# Conversions

## Conversions Part 1

Format	Color
Hex	DBBA94
RGB	219, 186, 148
RGB Percent	86%, 73%, 58%
CMY	0.1412, 0.2706, 0.4196
CMYK	0.00, 0.15, 0.32, 0.14
HSL	32°, 50%, 72%
HSV	32°, 32%, 86%
XYZ	52.1176, 52.3160, 35.3681
YIQ	191.5350, 31.8660, -4.8220

# Conversions

## Conversions Part 2

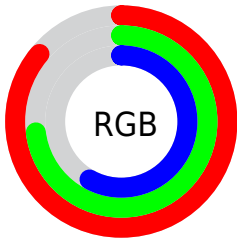
Format	Color
R <sub>Y</sub> B	210, 219, 148
Decimal	14400148
CIE Lab	77.47, 6.36, 23.67
CIE LCh	77, 24.512, 74.958
Yxy	52.3160, 0.3728, 0.3742
Android (android.graphics.Color)	4292590228 (0xFFDBBA94)
YUV	191.5350, -21.4628, 24.0868
Hunter-Lab	72.3298, 2.0420, 21.6390

# Details

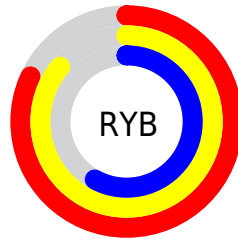
The Hex color **DBBA94** is a light color, and the websafe version is hex **FFCC99**. A complement of this color would be **94B5DB**, and the grayscale version is **C0C0C0**.

A 20% lighter version of the original color is **FFF2CA**, and **A38561** is the 20% darker color. If you saturate the color by 10%, you get **DBB07E**, and if you desaturate by 10%, it is **DBC4AA**.

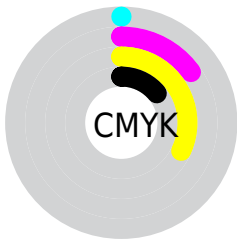
# Distribution



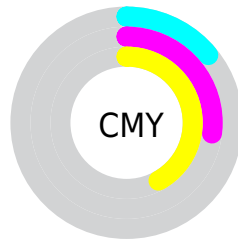
- Red (86%)
- Green (73%)
- Blue (58%)



- Red (82%)
- Yellow (86%)
- Blue (58%)



- Cyan (0%)
- Magenta (15%)
- Yellow (32%)
- Black (14%)



- Cyan (14%)
- Magenta (27%)
- Yellow (42%)

# Brightness & Saturation Gradients

These gradients show how the Hex color DBBA94 changes by changing the brightness by 10 percent. The first figure shows a shift by +10% for each color and the second figure -10%.

Similar to the brightness gradients but the following saturation gradients show a change of the Hex color DBBA94 by changing the saturation by 10% instead.



 DBBA94

 DBBA94

FFFFFF

 BF9F7A

 FFF2CA

 A38561

 FFFFFE6

 886C49

 6E5432

 543C1C

 3C2704

 241300

 000000

 DBBA94

 DBBA94

 #DBB07E

 #DBC4AA

 #DBA668

 #DBCEC0

 #DB9B52

 #DBD9D6

 #DB913C

 #DBE3EC

 #DB8727

 #DBEDFF

 #DB7D11

 #DBF7FF

 #DB7500

 #DBFFFF

# Harmonies

## Analogous

The Analogous color harmony consists of three colors that are next to each other on the color wheel.



EAB3A0



DBBA94



C5C293

# Triad

The Triadic color harmony groups three colors that are evenly spaced from another and form a triangle on the color wheel.



DBBA94



81CCCA



D1B6E0

# Complementary

The Complementary color scheme is a pair of colors which are on the opposite of each other on the color wheel.



DBBA94



94B5DB

# Split Complementary

Split-complementary colors differ from the complementary color scheme. The scheme consists of three colors, the original color and two neighbors of the complement color.



B4BEEB



DBBA94



82CADF

# Square

The Square scheme is like the rectangle color scheme, but the four colors are evenly spaced on the color wheel.



DBBA94



92CCB3



96C5EB



E6B0CC

# Rectangle

The Rectangle color scheme consists of four colors that form a rectangle on the color wheel.



DBBA94



B4C69A



96C5EB



C8B8E5



# Sweetspot

The Sweet Spot groups the original color and five complimentary colors.



DBBA94



FFF3E6



DB94B5



807870



000000



808080



# Same Dimension

The Same Dimension uses a secret algorithm to generate beautiful new colors.



DBBA94



FFD19C



D9DB94



6E6963



AD5D00



2E1900



# Inverse Universe

The Inverse Universe completely reimagines the original color for something new.



94B5DB



9CCAFF



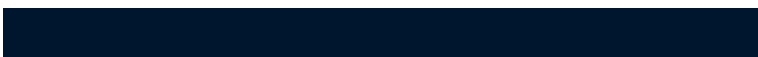
9694DB



63686E



0051AD

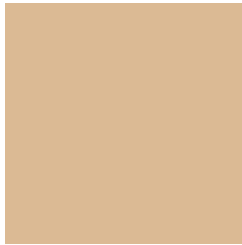


00152E



# Previews

## White Background



This preview shows how the Hex color DBBA94 looks on a white background.

## Color Contrast Check

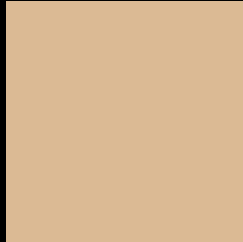
Large Text (above 18pt) WCAG AA × Fail

Any Text WCAG AA × Fail

Large Text (above 18pt) WCAG AAA × Fail

Any Text WCAG AAA × Fail

# Black Background



This preview shows how the Hex color DBBA94 looks on a black background.

## Color Contrast Check

Large Text (above 18pt) WCAG AA ✓ Pass

Any Text WCAG AA ✓ Pass

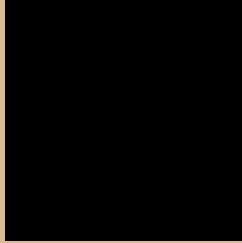
Large Text (above 18pt) WCAG AAA ✓ Pass

Any Text WCAG AAA ✓ Pass

If you want to check with other color combinations, try the [Color Contrast Checker](#).



## Hex DBBA94 Background



This preview shows how black text looks on a background with the Hex color DBBA94.



This preview shows how white text looks on a background with the Hex color DBBA94.

# Color Blindness Simulation

Color vision deficiency is a very complex topic, and I could not describe the different causes any better than Wikipedia does, so if you want to learn more, you should check out their [article about color blindness](#).

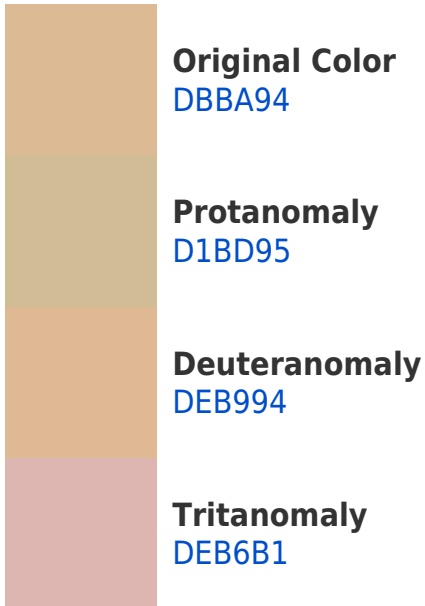
## Dichromacy





**Tritanopia**  
E0B4C2

# Trichromacy



# Monochromacy



# CSS Examples

## Text

The CSS property to change the color of the text to Hex DBBA94 is called "color". The color property can be set on classes, ids or directly on the HTML element.

This example shows how text in the color #DBBA94 looks like.

```
.text, #text, p{  
    color:#DBBA94  
}
```

If you want to add a text shadow in that color use the text-shadow property, you can generate a text shadow directly with our [CSS Text Shadow Generator](#).

Here you see how black text with a 4 pixel #DBBA94 colored shadow looks like.

```
.shadow{ text-shadow: 4px 4px 2px #DBBA94
}
```

## Border

The CSS property to change the border of an element to Hex DBBA94 is called "border". The border property can be set on classes, ids or directly on the HTML element.

This example shows the color as border, it can be applied via the CSS property "border" or "border-color".

```
.border, #border, table{ border:4px solid
#DBBA94 }
```

If only the border color should be changed use the property `border-color`.

```
.border{ border-color:#DBBA94 }
```

If you want to add a box shadow in that color use:

Here you see how a box with a 4 pixel #DBBA94 colored shadow looks like.

```
.boxshadow{ -moz-box-shadow:4px 4px 4px  
4px #DBBA94; -webkit-box-shadow:4px 4px  
4px 4px #DBBA94; box-shadow:4px 4px 4px  
4px #DBBA94 }
```

# Background

The CSS property to change the background color of an element to Hex DBBA94 is called "background". The background property can be set on classes, ids or directly on the HTML element.

```
.background, #background, body{  
background:#DBBA94 }
```

If only the background color should be changed can be used:

```
.background{ background-color:#DBBA94 }
```

This example shows the color as background, it is applied via the CSS property "background".

To optimize and compress your CSS code, you can use our [online CSS compressor and optimizer](#) based on csstidy. If you want to create a linear or radial gradient as background or border, check our [CSS Gradient Generator](#).



Hey! You found this booklet interesting? Support Converting Colors with the new Membership Option!

The pro membership hides all ads, plus gives you double the colors in the color bucket, and more awesome pro features!

**[Learn more, Memberships starting at \\$2.50/m!](#)**

**Follow me  
on Twitter!**

@ConvertingColor