

Converting Colors

Hex(DBBA9A)

Have a look what the booklet for
Hex(DBBA9A) contains.

Hex(DBBA9A)	3
<i>Conversions</i>	4
<i>Details</i>	6
<i>Harmonies</i>	11
<i>Previews</i>	23
<i>Color Blindness Simulation</i>	26
<i>CSS Examples</i>	29

Color

Hex(DBBA9A)

Conversions

Conversions Part 1

Format	Color
Hex	DBBA9A
RGB	219, 186, 154
RGB Percent	86%, 73%, 60%
CMY	0.1412, 0.2706, 0.3961
CMYK	0.00, 0.15, 0.30, 0.14
HSL	30°, 47%, 73%
HSV	30°, 30%, 86%
XYZ	52.6051, 52.5110, 37.9349
YIQ	192.2190, 29.9400, -2.9560

Conversions

Conversions Part 2

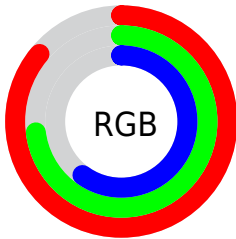
Format	Color
R _Y B	219, 217, 154
Decimal	14400154
CIE Lab	77.59, 7.13, 20.62
CIE LCh	78, 21.822, 70.920
Yxy	52.5110, 0.3677, 0.3671
Android (android.graphics.Color)	4292590234 (0xFFDBBA9A)
YUV	192.2190, -18.8420, 23.4869
Hunter-Lab	72.4645, 2.7680, 19.6870

Details

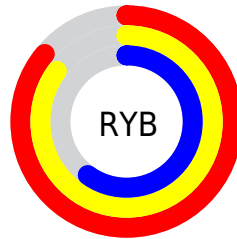
The Hex color **DBBA9A** is a light color, and the websafe version is hex **FFCC99**. A complement of this color would be **9ABBDB**, and the grayscale version is **C0C0C0**.

A 20% lighter version of the original color is **FFF2D1**, and **A38567** is the 20% darker color. If you saturate the color by 10%, you get **DBAF84**, and if you desaturate by 10%, it is **DBC5B0**.

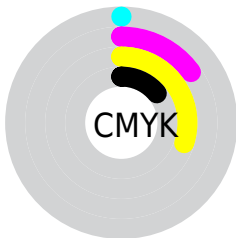
Distribution



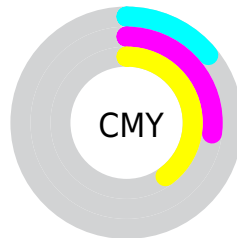
- Red (86%)
- Green (73%)
- Blue (60%)



- Red (86%)
- Yellow (85%)
- Blue (60%)



- Cyan (0%)
- Magenta (15%)
- Yellow (30%)
- Black (14%)



- Cyan (14%)
- Magenta (27%)
- Yellow (40%)

Brightness & Saturation Gradients

These gradients show how the Hex color DBBA9A changes by changing the brightness by 10 percent. The first figure shows a shift by +10% for each color and the second figure -10%.

Similar to the brightness gradients but the following saturation gradients show a change of the Hex color DBBA9A by changing the saturation by 10% instead.

 DBBA9A

 DBBA9A

FFFFFF

 BF9F80

 FFF2D1

 A38567

 FFFFED

 886C4F

 6E5337

 553C22

 3C270C

 251200

 000000

 DBBA9A

 DBBA9A

 DBAF84

 DBC5B0

 DBA46E

 DBD0C6

 DB9958

 DBDBDC

 DB8E42

 DBE6F2

 DB822D

 DBF2FF

 DB7717

 DBFDFF

 DB6C01

 DBFFFF

 DB6C00

Harmonies

Analogous

The Analogous color harmony consists of three colors that are next to each other on the color wheel.



E7B4A6



DBBA9A



C8C198

Triad

The Triadic color harmony groups three colors that are evenly spaced from another and form a triangle on the color wheel.



DBBA9A



8BCBC7



CCB8DE

Complementary

The Complementary color scheme is a pair of colors which are on the opposite of each other on the color wheel.



DBBA9A



9ABBDB

Split Complementary

Split-complementary colors differ from the complementary color scheme. The scheme consists of three colors, the original color and two neighbors of the complement color.



B2BFE7



DBBA9A



89CAD9

Square

The Square scheme is like the rectangle color scheme, but the four colors are evenly spaced on the color wheel.



DBBA9A



9BCAB2



99C5E5



E0B3CD

Rectangle

The Rectangle color scheme consists of four colors that form a rectangle on the color wheel.



DBBA9A



B8C59D



99C5E5



C4BAE2

Sweetspot

The Sweet Spot groups the original color and five complimentary colors.



DBBA9A



FFF3E8



DB9ABC



807871



000000



808080

Same Dimension

The Same Dimension uses a secret algorithm to generate beautiful new colors.



DBBA9A



FFD0A3



DBDA9A



6E6863



AD5500



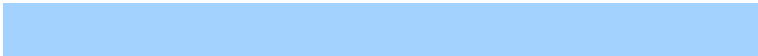
2E1700

Inverse Universe

The Inverse Universe completely reimagines the original color for something new.



9ABBDB



A3D2FF



9A9BDB



63686E



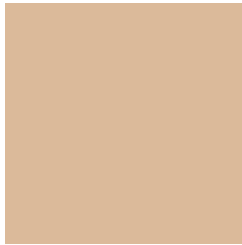
0058AD



00172E

Previews

White Background



This preview shows how the Hex color DBBA9A looks on a white background.

Color Contrast Check

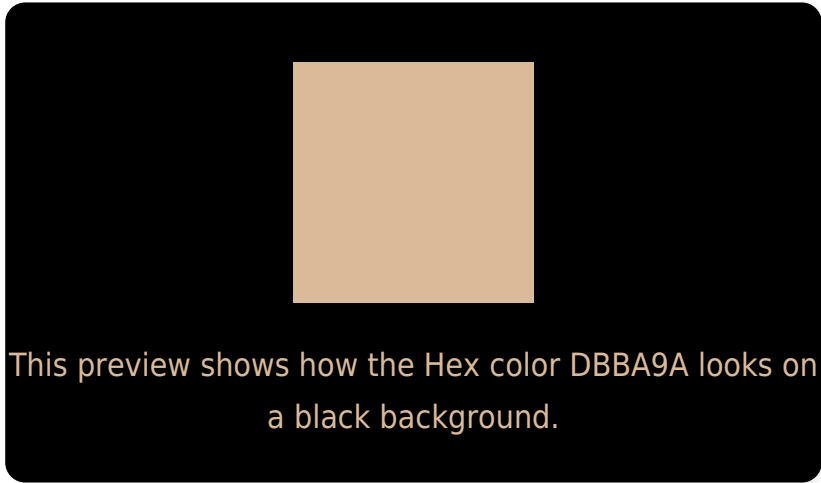
Large Text (above 18pt) WCAG AA × Fail

Any Text WCAG AA × Fail

Large Text (above 18pt) WCAG AAA × Fail

Any Text WCAG AAA × Fail

Black Background



Color Contrast Check

Large Text (above 18pt) WCAG AA ✓ Pass

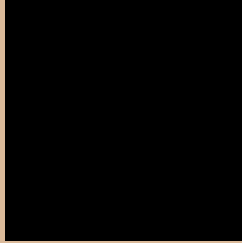
Any Text WCAG AA ✓ Pass

Large Text (above 18pt) WCAG AAA ✓ Pass

Any Text WCAG AAA ✓ Pass

If you want to check with other color combinations, try the [Color Contrast Checker](#).

Hex DBBA9A Background



This preview shows how black text looks on a background with the Hex color DBBA9A.



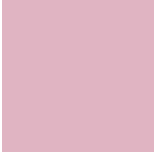
This preview shows how white text looks on a background with the Hex color DBBA9A.

Color Blindness Simulation

Color vision deficiency is a very complex topic, and I could not describe the different causes any better than Wikipedia does, so if you want to learn more, you should check out their [article about color blindness](#).

Dichromacy





Tritanopia
E0B4C2

Trichromacy



Monochromacy



CSS Examples

Text

The CSS property to change the color of the text to Hex DBBA9A is called "color". The color property can be set on classes, ids or directly on the HTML element.

This example shows how text in the color #DBBA9A looks like.

```
.text, #text, p{  
    color:#DBBA9A  
}
```

If you want to add a text shadow in that color use the text-shadow property, you can generate a text shadow directly with our [CSS Text Shadow Generator](#).

Here you see how black text with a 4 pixel #DBBA9A colored shadow looks like.

```
.shadow{ text-shadow: 4px 4px 2px #DBBA9A
}
```

Border

The CSS property to change the border of an element to Hex DBBA9A is called "border". The border property can be set on classes, ids or directly on the HTML element.

This example shows the color as border, it can be applied via the CSS property "border" or "border-color".

```
.border, #border, table{ border:4px solid
#DBBA9A }
```

If only the border color should be changed use the property `border-color`.

```
.border{ border-color:#DBBA9A }
```

If you want to add a box shadow in that color use:

Here you see how a box with a 4 pixel #DBBA9A colored shadow looks like.

```
.boxshadow{ -moz-box-shadow:4px 4px 4px  
4px #DBBA9A; -webkit-box-shadow:4px 4px  
4px 4px #DBBA9A; box-shadow:4px 4px 4px  
4px #DBBA9A }
```

Background

The CSS property to change the background color of an element to Hex DBBA9A is called "background". The background property can be set on classes, ids or directly on the HTML element.

```
.background, #background, body{  
background:#DBBA9A }
```

If only the background color should be changed can be used:

```
.background{ background-color:#DBBA9A }
```

This example shows the color as background, it is applied via the CSS property "background".

To optimize and compress your CSS code, you can use our [online CSS compressor and optimizer](#) based on csstidy. If you want to create a linear or radial gradient as background or border, check our [CSS Gradient Generator](#).

Hey! You found this booklet interesting? Support Converting Colors with the new Membership Option!

The pro membership hides all ads, plus gives you double the colors in the color bucket, and more awesome pro features!

[Learn more, Memberships starting at \\$2.50/m!](#)

**Follow me
on Twitter!**

@ConvertingColor