

Converting Colors

Hex(DBBBDD)

Have a look what the booklet for
Hex(DBBBDD) contains.

Hex(DBBBDD)	3
<i>Conversions</i>	4
<i>Details</i>	6
<i>Harmonies</i>	11
<i>Previews</i>	23
<i>Color Blindness Simulation</i>	26
<i>CSS Examples</i>	29

Color

Hex(DBBBDD)

Conversions

Conversions Part 1

Format	Color
Hex	DBBBDD
RGB	219, 187, 221
RGB Percent	86%, 73%, 87%
CMY	0.1412, 0.2667, 0.1333
CMYK	0.01, 0.15, 0.00, 0.13
HSL	296°, 33%, 80%
HSV	296°, 15%, 87%
XYZ	60.0349, 55.8212, 76.0170
YIQ	200.4440, 8.1580, 17.3580

Conversions

Conversions Part 2

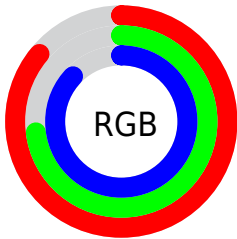
Format	Color
R _Y B	219, 187, 221
Decimal	14400477
CIE Lab	79.51, 17.31, -12.75
CIE LCh	80, 21.499, 323.631
Yxy	55.8212, 0.3129, 0.2909
Android (android.graphics.Color)	4292590557 (0xFFDDBBDD)
YUV	200.4440, 10.1341, 16.2736
Hunter-Lab	74.7136, 12.6821, -8.0249

Details

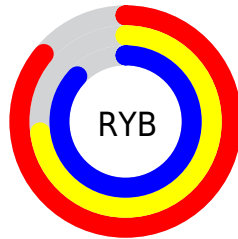
The Hex color **DBBBDD** is a light color, and the websafe version is hex **FFCCFF**. A complement of this color would be **BDDDBB**, and the grayscale version is **C8C8C8**.

A 20% lighter version of the original color is **FFF3FF**, and **A486A6** is the 20% darker color. If you saturate the color by 10%, you get **DAA5DD**, and if you desaturate by 10%, it is **DCD1DD**.

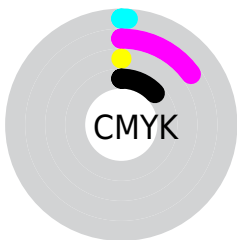
Distribution



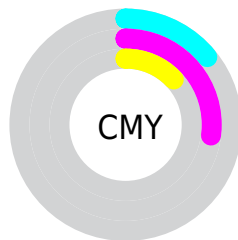
- Red (86%)
- Green (73%)
- Blue (87%)



- Red (86%)
- Yellow (73%)
- Blue (87%)



- Cyan (1%)
- Magenta (15%)
- Yellow (0%)
- Black (13%)



- Cyan (14%)
- Magenta (27%)
- Yellow (13%)

Brightness & Saturation Gradients

These gradients show how the Hex color DBBBDD changes by changing the brightness by 10 percent. The first figure shows a shift by +10% for each color and the second figure -10%.

Similar to the brightness gradients but the following saturation gradients show a change of the Hex color DBBBDD by changing the saturation by 10% instead.

 DBBBDD

 DBBBDD

FFFFFFF

 BFA0C1

 FFF3FF

 A486A6

 896C8C

 705472

 573C59

 3F2642

 29112C

 160018

 000000

 DBBBDD

 DBBBDD

 DAA5DD

 DCD1DD

 D88FDD

 DEE7DD

 D779DD

 DFFDDD

 D663DD

 E0FFDD

 D54DDD

 E2FFDD

 D336DD

 E3FFDD

 D220DD

 E4FFDD

 D10ADD

 E5FFDD

 D000DD

 E7FFDD

Harmonies

Analogous

The Analogous color harmony consists of three colors that are next to each other on the color wheel.



C3C1EA



DBBBDD



EAB7CA

Triad

The Triadic color harmony groups three colors that are evenly spaced from another and form a triangle on the color wheel.



DBBBDD



D9C29E



8FD0D4

Complementary

The Complementary color scheme is a pair of colors which are on the opposite of each other on the color wheel.



DBBBDD



BDDDBB

Split Complementary

Split-complementary colors differ from the complementary color scheme. The scheme consists of three colors, the original color and two neighbors of the complement color.



99D0C0



DBBBDD



C3C9A0

Square

The Square scheme is like the rectangle color scheme, but the four colors are evenly spaced on the color wheel.



DBBBDD



E8BCA6



ADCEAD



94CDE5

Rectangle

The Rectangle color scheme consists of four colors that form a rectangle on the color wheel.



DBBBDD



EFB7BC



ADCEAD



90D1CE

Sweetspot

The Sweet Spot groups the original color and five complimentary colors.



DBBBDD



FEF2FF



BBBDDD



7F7880



000000



808080

Same Dimension

The Same Dimension uses a secret algorithm to generate beautiful new colors.



DBBBDD



FCD1FF



DDBBCE



6D636E



A300AD



2B002E

Inverse Universe

The Inverse Universe completely reimagines the original color for something new.



DDBBBD



FFD1D4



BBDDCA



6E6363



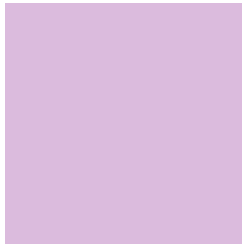
AD000A



2E0003

Previews

White Background



This preview shows how the Hex color DBBBDD looks on a white background.

Color Contrast Check

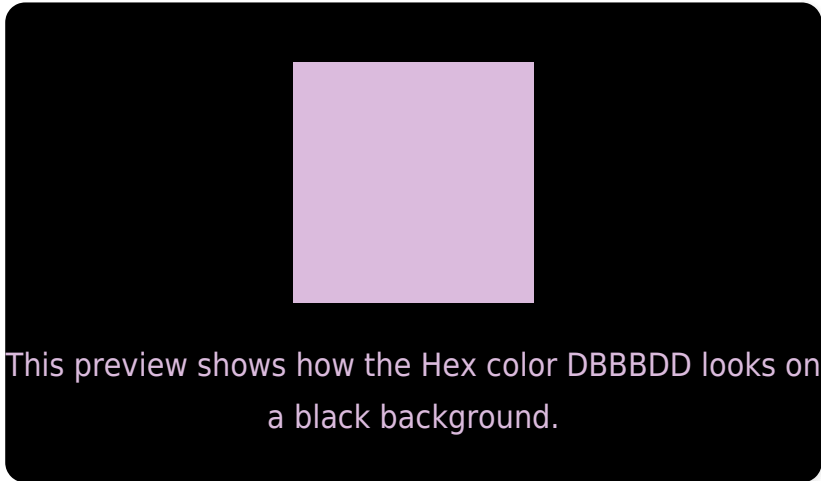
Large Text (above 18pt) WCAG AA × Fail

Any Text WCAG AA × Fail

Large Text (above 18pt) WCAG AAA × Fail

Any Text WCAG AAA × Fail

Black Background



Color Contrast Check

Large Text (above 18pt) WCAG AA ✓ Pass

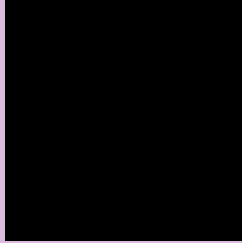
Any Text WCAG AA ✓ Pass

Large Text (above 18pt) WCAG AAA ✓ Pass

Any Text WCAG AAA ✓ Pass

If you want to check with other color combinations, try the [Color Contrast Checker](#).

Hex DBBBDD Background



This preview shows how black text looks on a background with the Hex color DBBBDD.

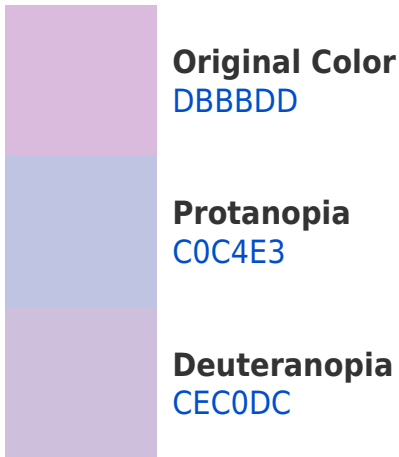


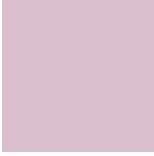
This preview shows how white text looks on a background with the Hex color DBBBDD.

Color Blindness Simulation

Color vision deficiency is a very complex topic, and I could not describe the different causes any better than Wikipedia does, so if you want to learn more, you should check out their [article about color blindness](#).

Dichromacy





Tritanopia
D9BECD

Trichromacy



Original Color
DBBBDD

Protanomaly
CAC1E1

Deuteranomaly
D3BEDC

Tritanomaly
DABDD3

Monochromacy



Original Color
DBBBDD

Achromatopsia
C8C8C8

Achromatomaly
CFC3D0

CSS Examples

Text

The CSS property to change the color of the text to Hex DBBBDD is called "color". The color property can be set on classes, ids or directly on the HTML element.

This example shows how text in the color #DBBBDD looks like.

```
.text, #text, p{  
    color:#DBBBDD  
}
```

If you want to add a text shadow in that color use the text-shadow property, you can generate a text shadow directly with our [CSS Text Shadow Generator](#).

Here you see how black text with a 4 pixel #DBBBDD colored shadow looks like.

```
.shadow{ text-shadow: 4px 4px 2px #DBBBDD
}
```

Border

The CSS property to change the border of an element to Hex DBBBDD is called "border". The border property can be set on classes, ids or directly on the HTML element.

This example shows the color as border, it can be applied via the CSS property "border" or "border-color".

```
.border, #border, table{ border:4px solid
#DBBBDD }
```

If only the border color should be changed use the property `border-color`.

```
.border{ border-color:#DBBBDD }
```

If you want to add a box shadow in that color use:

Here you see how a box with a 4 pixel #DBBBDD colored shadow looks like.

```
.boxshadow{ -moz-box-shadow:4px 4px 4px  
4px #DBBBDD; -webkit-box-shadow:4px 4px  
4px 4px #DBBBDD; box-shadow:4px 4px 4px  
4px #DBBBDD }
```

Background

The CSS property to change the background color of an element to Hex DBBBDD is called "background". The background property can be set on classes, ids or directly on the HTML element.

```
.background, #background, body{  
background:#DBBBDD }
```

If only the background color should be changed can be used:

```
.background{ background-color:#DBBBDD }
```

This example shows the color as background, it is applied via the CSS property "background".

To optimize and compress your CSS code, you can use our [online CSS compressor and optimizer](#) based on csstidy. If you want to create a linear or radial gradient as background or border, check our [CSS Gradient Generator](#).

Hey! You found this booklet interesting? Support Converting Colors with the new Membership Option!

The pro membership hides all ads, plus gives you double the colors in the color bucket, and more awesome pro features!

[Learn more, Memberships starting at \\$2.50/m!](#)

**Follow me
on Twitter!**

@ConvertingColor