

# Converting Colors

Hex(DBBEC0)

Have a look what the booklet for  
Hex(DBBEC0) contains.

<b>Hex(DBBEC0)</b> .....	3
<i><b>Conversions</b></i> .....	4
<i><b>Details</b></i> .....	6
<i><b>Harmonies</b></i> .....	11
<i><b>Previews</b></i> .....	23
<i><b>Color Blindness Simulation</b></i> .....	26
<i><b>CSS Examples</b></i> .....	29

# **Color**

**Hex(DBBEC0)**

# Conversions

## Conversions Part 1

Format	Color
Hex	DBBEC0
RGB	219, 190, 192
RGB Percent	86%, 75%, 75%
CMY	0.1412, 0.2549, 0.2471
CMYK	0.00, 0.13, 0.12, 0.14
HSL	356°, 29%, 80%
HSV	356°, 13%, 86%
XYZ	57.1413, 55.6928, 57.6073
YIQ	198.8990, 16.6420, 6.7700

# Conversions

## Conversions Part 2

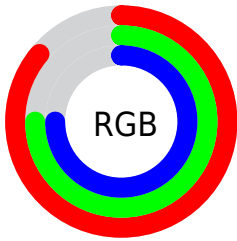
Format	Color
R <sub>Y</sub> B	219, 190, 192
Decimal	14401216
CIE Lab	79.44, 10.62, 2.79
CIE LCh	79, 10.982, 14.718
Yxy	55.6928, 0.3353, 0.3268
Android (android.graphics.Color)	4292591296 (0xFFDBBEC0)
YUV	198.8990, -3.4012, 17.6286
Hunter-Lab	74.6276, 6.0767, 6.4716

# Details

The Hex color **DBBEC0** is a light color, and the websafe version is hex **FFCCCC**. A complement of this color would be **BEDBD9**, and the grayscale version is **C7C7C7**.

A 20% lighter version of the original color is **FFF6F8**, and **A4898B** is the 20% darker color. If you saturate the color by 10%, you get **DBA8AC**, and if you desaturate by 10%, it is **DBD4D4**.

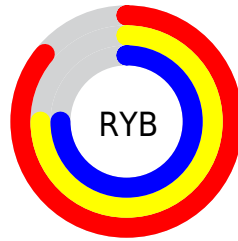
# Distribution



Red (86%)

Green (75%)

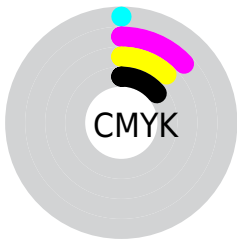
Blue (75%)



Red (86%)

Yellow (75%)

Blue (75%)

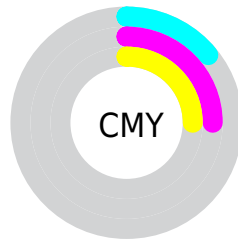


Cyan (0%)

Magenta (13%)

Yellow (12%)

Black (14%)



Cyan (14%)

Magenta (25%)

Yellow (25%)

# Brightness & Saturation Gradients

These gradients show how the Hex color DBBEC0 changes by changing the brightness by 10 percent. The first figure shows a shift by +10% for each color and the second figure -10%.

Similar to the brightness gradients but the following saturation gradients show a change of the Hex color DBBEC0 by changing the saturation by 10% instead.



 DBBEC0

 DBBEC0

FFFFFF

 BFA3A5

 FFF6F8

 A4898B

 896F71

 705759

 573F41

 3F292B

 291517

 130000

 000000

 DBBEC0

 DBBEC0

 DBA8AC

 DBD4D4

 DB9297

 DBEAE9

 DB7C83

 DBFFFD

 DB666E

 DBFFFF

 DB515A

 DB3B46

 DB2531

 DB0F1D

 DB000F

# Harmonies

## Analogous

The Analogous color harmony consists of three colors that are next to each other on the color wheel.



D7BECA



DBBEC0



D9BFB7

# Triad

The Triadic color harmony groups three colors that are evenly spaced from another and form a triangle on the color wheel.



DBBEC0



BCC9B6



B4C7D8

# Complementary

The Complementary color scheme is a pair of colors which are on the opposite of each other on the color wheel.



DBBEC0



BEDBD9

# Split Complementary

Split-complementary colors differ from the complementary color scheme. The scheme consists of three colors, the original color and two neighbors of the complement color.



ADCAD3



DBBEC0



B2CBBF

# Square

The Square scheme is like the rectangle color scheme, but the four colors are evenly spaced on the color wheel.



DBBEC0



C8C6B1



ACCBCA



C0C4D8

# Rectangle

The Rectangle color scheme consists of four colors that form a rectangle on the color wheel.



DBBEC0



D5C1B3



ACCBCA



B1C8D7

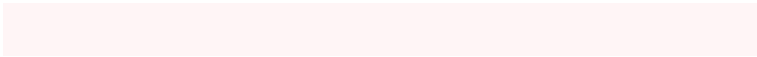


# Sweetspot

The Sweet Spot groups the original color and five complimentary colors.



DBBEC0



FFF5F6



D9BEDB



80797A



000000



808080



# Same Dimension

The Same Dimension uses a secret algorithm to generate beautiful new colors.



DBBEC0



FFD6D9



DBCABE



6E6363



AD000C



2E0003



# Inverse Universe

The Inverse Universe completely reimagines the original color for something new.



DBBEC0



FFD6D9



BECFDB



6E6363



AD000C

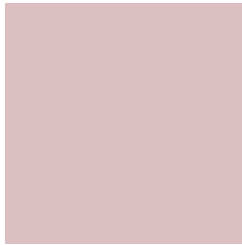


2E0003



# Previews

## White Background



This preview shows how the Hex color DBBEC0 looks on a white background.

## Color Contrast Check

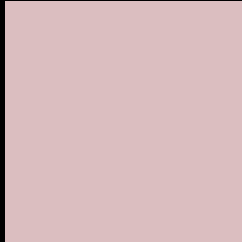
Large Text (above 18pt) WCAG AA × Fail

Any Text WCAG AA × Fail

Large Text (above 18pt) WCAG AAA × Fail

Any Text WCAG AAA × Fail

# Black Background



This preview shows how the Hex color DBBEC0 looks on a black background.

## Color Contrast Check

Large Text (above 18pt) WCAG AA ✓ Pass

Any Text WCAG AA ✓ Pass

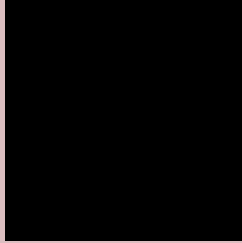
Large Text (above 18pt) WCAG AAA ✓ Pass

Any Text WCAG AAA ✓ Pass

If you want to check with other color combinations, try the [Color Contrast Checker](#).



## Hex DBBEC0 Background



This preview shows how black text looks on a background with the Hex color DBBEC0.



This preview shows how white text looks on a background with the Hex color DBBEC0.

# Color Blindness Simulation

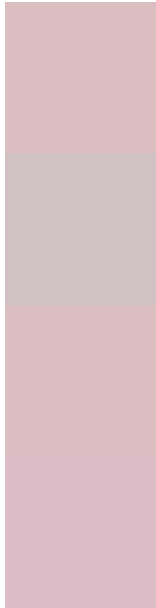
Color vision deficiency is a very complex topic, and I could not describe the different causes any better than Wikipedia does, so if you want to learn more, you should check out their [article about color blindness](#).

## Dichromacy





# Trichromacy



**Original Color**  
DBBEC0

**Protanomaly**  
D0C2C2

**Deuteranomaly**  
DABEC0

**Tritanomaly**  
DCBDC7

# Monochromacy



**Original Color**  
DBBEC0

**Achromatopsia**  
C7C7C7

**Achromatomaly**  
CEC4C4

# CSS Examples

## Text

The CSS property to change the color of the text to Hex DBBEC0 is called "color". The color property can be set on classes, ids or directly on the HTML element.

This example shows how text in the color #DBBEC0 looks like.

```
.text, #text, p{  
    color:#DBBEC0  
}
```

If you want to add a text shadow in that color use the text-shadow property, you can generate a text shadow directly with our [CSS Text Shadow Generator](#).

Here you see how black text with a 4 pixel #DBBEC0 colored shadow looks like.

```
.shadow{ text-shadow: 4px 4px 2px #DBBEC0  
}
```

## Border

The CSS property to change the border of an element to Hex DBBEC0 is called "border". The border property can be set on classes, ids or directly on the HTML element.

This example shows the color as border, it can be applied via the CSS property "border" or "border-color".

```
.border, #border, table{ border:4px solid  
#DBBEC0 }
```

If only the border color should be changed use the property `border-color`.

```
.border{ border-color:#DBBEC0 }
```

If you want to add a box shadow in that color use:

Here you see how a box with a 4 pixel #DBBEC0 colored shadow looks like.

```
.boxshadow{ -moz-box-shadow:4px 4px 4px  
4px #DBBEC0; -webkit-box-shadow:4px 4px  
4px 4px #DBBEC0; box-shadow:4px 4px 4px  
4px #DBBEC0 }
```

# Background

The CSS property to change the background color of an element to Hex DBBEC0 is called "background". The background property can be set on classes, ids or directly on the HTML element.

```
.background, #background, body{  
background:#DBBEC0 }
```

If only the background color should be changed can be used:

```
.background{ background-color:#DBBEC0 }
```

This example shows the color as background, it is applied via the CSS property "background".

To optimize and compress your CSS code, you can use our [online CSS compressor and optimizer](#) based on csstidy. If you want to create a linear or radial gradient as background or border, check our [CSS Gradient Generator](#).



Hey! You found this booklet interesting? Support Converting Colors with the new Membership Option!

The pro membership hides all ads, plus gives you double the colors in the color bucket, and more awesome pro features!

**[Learn more, Memberships starting at \\$2.50/m!](#)**

**Follow me  
on Twitter!**

@ConvertingColor