

Converting Colors

Hex(DBBFC0)

Have a look what the booklet for
Hex(DBBFC0) contains.

Hex(DBBFC0)	3
<i>Conversions</i>	4
<i>Details</i>	6
<i>Harmonies</i>	11
<i>Previews</i>	23
<i>Color Blindness Simulation</i>	26
<i>CSS Examples</i>	29

Color

Hex(DBBFC0)

Conversions

Conversions Part 1

Format	Color
Hex	DBBFC0
RGB	219, 191, 192
RGB Percent	86%, 75%, 75%
CMY	0.1412, 0.2510, 0.2471
CMYK	0.00, 0.13, 0.12, 0.14
HSL	358°, 28%, 80%
HSV	358°, 13%, 86%
XYZ	57.3586, 56.1274, 57.6797
YIQ	199.4860, 16.3670, 6.2470

Conversions

Conversions Part 2

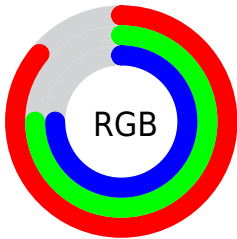
Format	Color
R _Y B	219, 191, 192
Decimal	14401472
CIE Lab	79.69, 10.09, 3.15
CIE LCh	80, 10.569, 17.337
Yxy	56.1274, 0.3351, 0.3279
Android (android.graphics.Color)	4292591552 (0xFFDDBBFC0)
YUV	199.4860, -3.6906, 17.1138
Hunter-Lab	74.9183, 5.5556, 6.7953

Details

The Hex color **DBBFC0** is a light color, and the websafe version is hex **CCCCCC**. A complement of this color would be **BFDBDA**, and the grayscale version is **C8C8C8**.

A 20% lighter version of the original color is **FFF7F8**, and **A48A8B** is the 20% darker color. If you saturate the color by 10%, you get **DBA9AB**, and if you desaturate by 10%, it is **DBD5D5**.

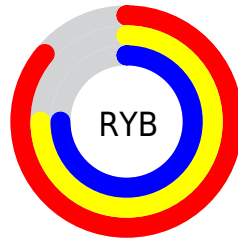
Distribution



Red (86%)

Green (75%)

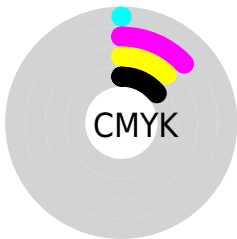
Blue (75%)



Red (86%)

Yellow (75%)

Blue (75%)

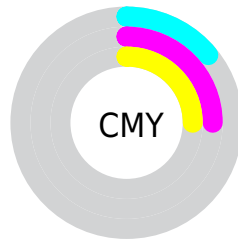


Cyan (0%)

Magenta (13%)

Yellow (12%)

Black (14%)



Cyan (14%)

Magenta (25%)

Yellow (25%)

Brightness & Saturation Gradients

These gradients show how the Hex color DBBFC0 changes by changing the brightness by 10 percent. The first figure shows a shift by +10% for each color and the second figure -10%.

Similar to the brightness gradients but the following saturation gradients show a change of the Hex color DBBFC0 by changing the saturation by 10% instead.

 DBBFC0

 DBBFC0

FFFFFF

 BFA4A5

 FFF7F8

 A48A8B

 897071

 705859

 574041

 3F2A2B

 291617

 140000

 000000

 DBBFC0

 DBBFC0

 DBA9AB

 DBD5D5

 DB9396

 DBEBEA

 DB7D81

 DBFFFF

 DB676C

 DB5256

 DB3C41

 DB262C

 DB1017

 DB0008

Harmonies

Analogous

The Analogous color harmony consists of three colors that are next to each other on the color wheel.



D7BFCA



DBBFC0



D9C1B7

Triad

The Triadic color harmony groups three colors that are evenly spaced from another and form a triangle on the color wheel.



DBBFC0



BCC9B8



B7C8D8

Complementary

The Complementary color scheme is a pair of colors which are on the opposite of each other on the color wheel.



DBBFC0



BFDBDA

Split Complementary

Split-complementary colors differ from the complementary color scheme. The scheme consists of three colors, the original color and two neighbors of the complement color.



AFCAD4



DBBFC0



B2CBC1

Square

The Square scheme is like the rectangle color scheme, but the four colors are evenly spaced on the color wheel.



DBBFC0



C8C7B3



ADCBCB



C2C4D8

Rectangle

The Rectangle color scheme consists of four colors that form a rectangle on the color wheel.



DBBFC0



D5C2B4



ADCBCB



B3C9D7

Sweetspot

The Sweet Spot groups the original color and five complimentary colors.



DBBFC0



FFF5F5



DABFDB



807979



000000



808080

Same Dimension

The Same Dimension uses a secret algorithm to generate beautiful new colors.



DBBFC0



FFD9DA



DBCCBF



6E6363



AD0006



2E0002

Inverse Universe

The Inverse Universe completely reimagines the original color for something new.



DBBFC0



FFD9DA



BFCEDB



6E6363



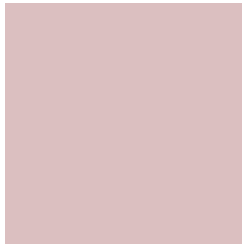
AD0006



2E0002

Previews

White Background



This preview shows how the Hex color DBBFC0 looks on a white background.

Color Contrast Check

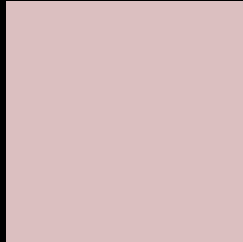
Large Text (above 18pt) WCAG AA × Fail

Any Text WCAG AA × Fail

Large Text (above 18pt) WCAG AAA × Fail

Any Text WCAG AAA × Fail

Black Background



This preview shows how the Hex color DBBFC0 looks on a black background.

Color Contrast Check

Large Text (above 18pt) WCAG AA ✓ Pass

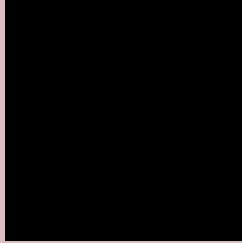
Any Text WCAG AA ✓ Pass

Large Text (above 18pt) WCAG AAA ✓ Pass

Any Text WCAG AAA ✓ Pass

If you want to check with other color combinations, try the [Color Contrast Checker](#).

Hex DBBFC0 Background



This preview shows how black text looks on a background with the Hex color DBBFC0.

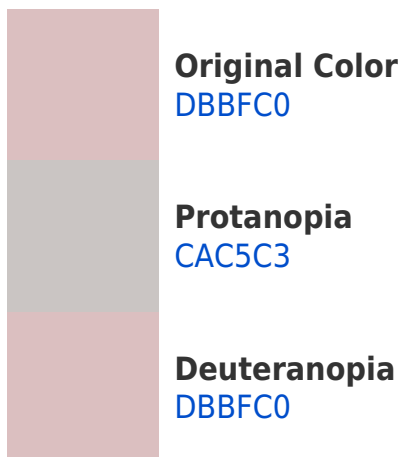


This preview shows how white text looks on a background with the Hex color DBBFC0.

Color Blindness Simulation

Color vision deficiency is a very complex topic, and I could not describe the different causes any better than Wikipedia does, so if you want to learn more, you should check out their [article about color blindness](#).

Dichromacy



Trichromacy



Original Color
DBBFC0

Protanomaly
D0C3C2

Deuteranomaly
DBBFC0

Tritanomaly
DCBEC8

Monochromacy



Original Color
DBBFC0

Achromatopsia
C7C7C7

Achromatomaly
CEC4C4

CSS Examples

Text

The CSS property to change the color of the text to Hex DBBFC0 is called "color". The color property can be set on classes, ids or directly on the HTML element.

This example shows how text in the color #DBBFC0 looks like.

```
.text, #text, p{  
    color:#DBBFC0  
}
```

If you want to add a text shadow in that color use the text-shadow property, you can generate a text shadow directly with our [CSS Text Shadow Generator](#).

Here you see how black text with a 4 pixel #DBBFC0 colored shadow looks like.

```
.shadow{ text-shadow: 4px 4px 2px #DBBFC0  
}
```

Border

The CSS property to change the border of an element to Hex DBBFC0 is called "border". The border property can be set on classes, ids or directly on the HTML element.

This example shows the color as border, it can be applied via the CSS property "border" or "border-color".

```
.border, #border, table{ border:4px solid  
#DBBFC0 }
```

If only the border color should be changed use the property `border-color`.

```
.border{ border-color:#DBBFC0 }
```

If you want to add a box shadow in that color use:

Here you see how a box with a 4 pixel #DBBFC0 colored shadow looks like.

```
.boxshadow{ -moz-box-shadow:4px 4px 4px  
4px #DBBFC0; -webkit-box-shadow:4px 4px  
4px 4px #DBBFC0; box-shadow:4px 4px 4px  
4px #DBBFC0 }
```

Background

The CSS property to change the background color of an element to Hex DBBFC0 is called "background". The background property can be set on classes, ids or directly on the HTML element.

```
.background, #background, body{  
background:#DBBFC0 }
```

If only the background color should be changed can be used:

```
.background{ background-color:#DBBFC0 }
```

This example shows the color as background, it is applied via the CSS property "background".

To optimize and compress your CSS code, you can use our [online CSS compressor and optimizer](#) based on csstidy. If you want to create a linear or radial gradient as background or border, check our [CSS Gradient Generator](#).

Hey! You found this booklet interesting? Support Converting Colors with the new Membership Option!

The pro membership hides all ads, plus gives you double the colors in the color bucket, and more awesome pro features!

[Learn more, Memberships starting at \\$2.50/m!](#)

**Follow me
on Twitter!**

@ConvertingColor