

Converting Colors

Hex(DBC4D0)

Have a look what the booklet for
Hex(DBC4D0) contains.

Hex(DBC4D0)	3
<i>Conversions</i>	4
<i>Details</i>	6
<i>Harmonies</i>	11
<i>Previews</i>	23
<i>Color Blindness Simulation</i>	26
<i>CSS Examples</i>	29

Color

Hex(DBC4D0)

Conversions

Conversions Part 1

Format	Color
Hex	DBC4D0
RGB	219, 196, 208
RGB Percent	86%, 77%, 82%
CMY	0.1412, 0.2314, 0.1843
CMYK	0.00, 0.11, 0.05, 0.14
HSL	329°, 24%, 81%
HSV	329°, 11%, 86%
XYZ	60.3385, 59.0940, 67.9006
YIQ	204.2450, 9.8560, 8.6080

Conversions

Conversions Part 2

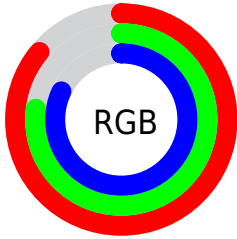
Format	Color
R _Y B	219, 196, 208
Decimal	14402768
CIE Lab	81.34, 10.14, -3.04
CIE LCh	81, 10.585, 343.324
Yxy	59.0940, 0.3221, 0.3154
Android (android.graphics.Color)	4292592848 (0xFFDBC4D0)
YUV	204.2450, 1.8512, 12.9401
Hunter-Lab	76.8726, 5.5803, 1.4407

Details

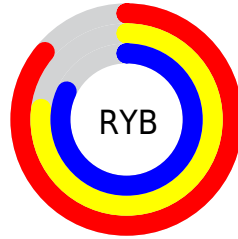
The Hex color **DBC4D0** is a light color, and the websafe version is hex **CCCCCC**. A complement of this color would be **C4DBCf**, and the grayscale version is **CCCCCC**.

A 20% lighter version of the original color is **FFDFF**, and **A48E9A** is the 20% darker color. If you saturate the color by 10%, you get **DBAEC6**, and if you desaturate by 10%, it is **DBDADA**.

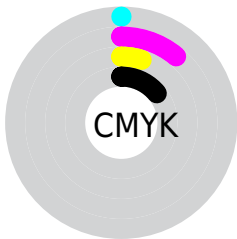
Distribution



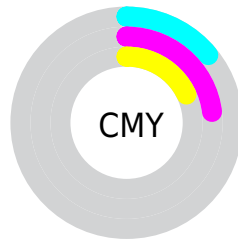
- Red (86%)
- Green (77%)
- Blue (82%)



- Red (86%)
- Yellow (77%)
- Blue (82%)



- Cyan (0%)
- Magenta (11%)
- Yellow (5%)
- Black (14%)



- Cyan (14%)
- Magenta (23%)
- Yellow (18%)

Brightness & Saturation Gradients

These gradients show how the Hex color DBC4D0 changes by changing the brightness by 10 percent. The first figure shows a shift by +10% for each color and the second figure -10%.

Similar to the brightness gradients but the following saturation gradients show a change of the Hex color DBC4D0 by changing the saturation by 10% instead.

 DBC4D0

FFFFFF

 FFFDFD

 DBC4D0

 BFA9B4

 A48E9A

 8A7580

 705C67

 58444F

 402E38

 2A1922

 17000D

 000000

 DBC4D0

 DBC4D0

 DBAEC6

 DBDADA

 DB98BB

 DBF0E5

 DB82B1

 DBFFEF

 DB6CA6

 DBFFFA

 DB579C

 DBFFFF

 DB4191

 DB2B87

 DB157C

 DB0072

Harmonies

Analogous

The Analogous color harmony consists of three colors that are next to each other on the color wheel.



D1C6D9



DBC4D0



E0C3C6

Triad

The Triadic color harmony groups three colors that are evenly spaced from another and form a triangle on the color wheel.



DBC4D0



CECBB7



B3CFD7

Complementary

The Complementary color scheme is a pair of colors which are on the opposite of each other on the color wheel.



DBC4D0



C4DBC F

Split Complementary

Split-complementary colors differ from the complementary color scheme. The scheme consists of three colors, the original color and two neighbors of the complement color.



B2D0CE



DBC4D0



C2CEBB

Square

The Square scheme is like the rectangle color scheme, but the four colors are evenly spaced on the color wheel.



DBC4D0



D8C8B7



B8D0C4



BACDDD

Rectangle

The Rectangle color scheme consists of four colors that form a rectangle on the color wheel.



DBC4D0



DFC4C0



B8D0C4



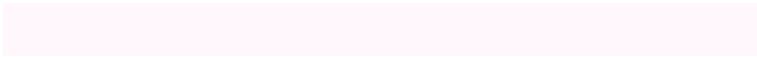
B2D0D5

Sweetspot

The Sweet Spot groups the original color and five complimentary colors.



DBC4D0



FFF7FB



CFC4DB



807A7D



000000



808080

Same Dimension

The Same Dimension uses a secret algorithm to generate beautiful new colors.



DBC4D0



FFDEEF



DBC4C5



6E6368



AD005A



2E0018

Inverse Universe

The Inverse Universe completely reimagines the original color for something new.



DBC4D0



FFDEEF



C4DBDA



6E6368



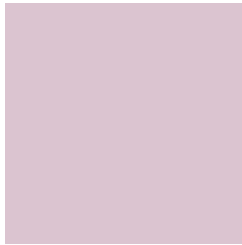
AD005A



2E0018

Previews

White Background



This preview shows how the Hex color DBC4D0 looks on a white background.

Color Contrast Check

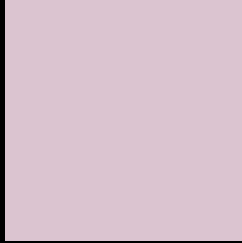
Large Text (above 18pt) WCAG AA × Fail

Any Text WCAG AA × Fail

Large Text (above 18pt) WCAG AAA × Fail

Any Text WCAG AAA × Fail

Black Background



This preview shows how the Hex color DBC4D0 looks on a black background.

Color Contrast Check

Large Text (above 18pt) WCAG AA ✓ Pass

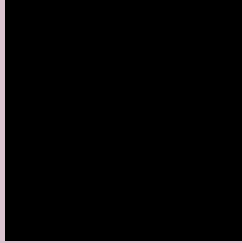
Any Text WCAG AA ✓ Pass

Large Text (above 18pt) WCAG AAA ✓ Pass

Any Text WCAG AAA ✓ Pass

If you want to check with other color combinations, try the [Color Contrast Checker](#).

Hex DBC4D0 Background



This preview shows how black text looks on a background with the Hex color DBC4D0.



This preview shows how white text looks on a background with the Hex color DBC4D0.

Color Blindness Simulation

Color vision deficiency is a very complex topic, and I could not describe the different causes any better than Wikipedia does, so if you want to learn more, you should check out their [article about color blindness](#).

Dichromacy



Original Color
DBC4D0

Protanopia
CBC9D3

Deuteranopia
DBC4D0



Tritanopia
DBC4D3

Trichromacy



Original Color
DBC4D0

Protanomaly
D1C7D2

Deuteranomaly
DBC4D0

Tritanomaly
DBC4D2

Monochromacy



Original Color
DBC4D0

Achromatopsia
CCCCCC

Achromatomaly
D1C9CD

CSS Examples

Text

The CSS property to change the color of the text to Hex DBC4D0 is called "color". The color property can be set on classes, ids or directly on the HTML element.

This example shows how text in the color #DBC4D0 looks like.

```
.text, #text, p{  
    color:#DBC4D0  
}
```

If you want to add a text shadow in that color use the text-shadow property, you can generate a text shadow directly with our [CSS Text Shadow Generator](#).

Here you see how black text with a 4 pixel #DBC4D0 colored shadow looks like.

```
.shadow{ text-shadow: 4px 4px 2px #DBC4D0
}
```

Border

The CSS property to change the border of an element to Hex DBC4D0 is called "border". The border property can be set on classes, ids or directly on the HTML element.

This example shows the color as border, it can be applied via the CSS property "border" or "border-color".

```
.border, #border, table{ border:4px solid
#DBC4D0 }
```

If only the border color should be changed use the property `border-color`.

```
.border{ border-color:#DBC4D0 }
```

If you want to add a box shadow in that color use:

Here you see how a box with a 4 pixel #DBC4D0 colored shadow looks like.

```
.boxshadow{ -moz-box-shadow:4px 4px 4px  
4px #DBC4D0; -webkit-box-shadow:4px 4px  
4px 4px #DBC4D0; box-shadow:4px 4px 4px  
4px #DBC4D0 }
```

Background

The CSS property to change the background color of an element to Hex DBC4D0 is called "background". The background property can be set on classes, ids or directly on the HTML element.

```
.background, #background, body{  
background:#DBC4D0 }
```

If only the background color should be changed can be used:

```
.background{ background-color:#DBC4D0 }
```

This example shows the color as background, it is applied via the CSS property "background".

To optimize and compress your CSS code, you can use our [online CSS compressor and optimizer](#) based on csstidy. If you want to create a linear or radial gradient as background or border, check our [CSS Gradient Generator](#).

Hey! You found this booklet interesting? Support Converting Colors with the new Membership Option!

The pro membership hides all ads, plus gives you double the colors in the color bucket, and more awesome pro features!

[Learn more, Memberships starting at \\$2.50/m!](#)

**Follow me
on Twitter!**

@ConvertingColor