

Converting Colors

Hex(DBC5C5)

Have a look what the booklet for
Hex(DBC5C5) contains.

Hex(DBC5C5)	3
<i>Conversions</i>	4
<i>Details</i>	6
<i>Harmonies</i>	11
<i>Previews</i>	23
<i>Color Blindness Simulation</i>	26
<i>CSS Examples</i>	29

Color

Hex(DBC5C5)

Conversions

Conversions Part 1

Format	Color
Hex	DBC5C5
RGB	219, 197, 197
RGB Percent	86%, 77%, 77%
CMY	0.1412, 0.2275, 0.2275
CMYK	0.00, 0.10, 0.10, 0.14
HSL	0°, 23%, 82%
HSV	0°, 10%, 86%
XYZ	59.2577, 59.0238, 61.0928
YIQ	203.5780, 13.1120, 4.6640

Conversions

Conversions Part 2

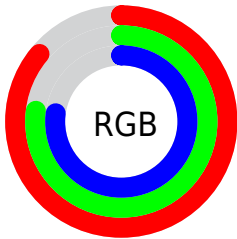
Format	Color
R _Y B	219, 197, 197
Decimal	14403013
CIE Lab	81.30, 7.73, 2.81
CIE LCh	81, 8.220, 19.980
Yxy	59.0238, 0.3304, 0.3291
Android (android.graphics.Color)	4292593093 (0xFFDBC5C5)
YUV	203.5780, -3.2430, 13.5251
Hunter-Lab	76.8269, 3.2324, 6.6314

Details

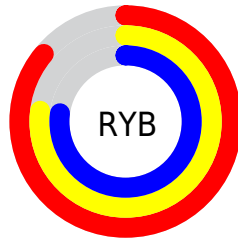
The Hex color **DBC5C5** is a light color, and the websafe version is hex **CCCCCC**. A complement of this color would be **C5DBDB**, and the grayscale version is **CCCCCC**.

A 20% lighter version of the original color is **FFFEFE**, and **A48F8F** is the 20% darker color. If you saturate the color by 10%, you get **DBAFAF**, and if you desaturate by 10%, it is **DBDBDB**.

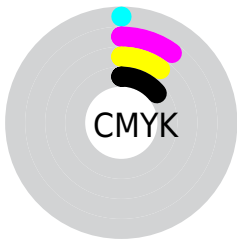
Distribution



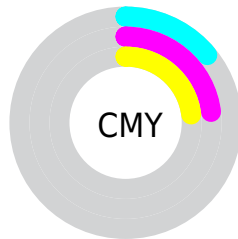
- Red (86%)
- Green (77%)
- Blue (77%)



- Red (86%)
- Yellow (77%)
- Blue (77%)



- Cyan (0%)
- Magenta (10%)
- Yellow (10%)
- Black (14%)



- Cyan (14%)
- Magenta (23%)
- Yellow (23%)

Brightness & Saturation Gradients

These gradients show how the Hex color DBC5C5 changes by changing the brightness by 10 percent. The first figure shows a shift by +10% for each color and the second figure -10%.

Similar to the brightness gradients but the following saturation gradients show a change of the Hex color DBC5C5 by changing the saturation by 10% instead.

 DBC5C5

 DBC5C5

FFFFFF

 BFAAAA

FFFEFE

 A48F8F

 8A7676

 705D5D

 574546

 402F2F

 2A1A1B

 170000

 000000

 DBC5C5

 DBC5C5

 DBAFAF

 DBDBDB

 DB9999

 DBF1F1

 DB8383

 DBFFFF

 DB6D6D

 DB5858

 DB4242

 DB2C2C

 DB1616

 DB0000

Harmonies

Analogous

The Analogous color harmony consists of three colors that are next to each other on the color wheel.



D8C5CD



DBC5C5



D9C6BE

Triad

The Triadic color harmony groups three colors that are evenly spaced from another and form a triangle on the color wheel.



DBC5C5



C2CDC0



BFCBD9

Complementary

The Complementary color scheme is a pair of colors which are on the opposite of each other on the color wheel.



DBC5C5



C5DBDB

Split Complementary

Split-complementary colors differ from the complementary color scheme. The scheme consists of three colors, the original color and two neighbors of the complement color.



B9CDD5



DBC5C5



BBCEC7

Square

The Square scheme is like the rectangle color scheme, but the four colors are evenly spaced on the color wheel.



DBC5C5



CBCBBC



B7CFCF



C8C9D8

Rectangle

The Rectangle color scheme consists of four colors that form a rectangle on the color wheel.



DBC5C5



D6C8BC



B7CFCF



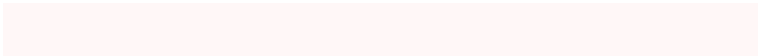
BDCCD8

Sweetspot

The Sweet Spot groups the original color and five complimentary colors.



DBC5C5



FFF7F7



DBC5DB



807A7A



000000



808080

Same Dimension

The Same Dimension uses a secret algorithm to generate beautiful new colors.



DBC5C5



FFE0E0



DBD0C5



6E6363



AD0000



2E0000

Inverse Universe

The Inverse Universe completely reimagines the original color for something new.



C5DBDB



E0FFFF



C5D0DB



636E6E



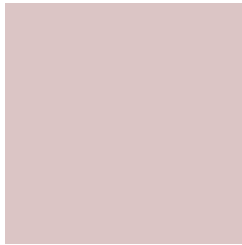
00ADAD



002E2E

Previews

White Background



This preview shows how the Hex color DBC5C5 looks on a white background.

Color Contrast Check

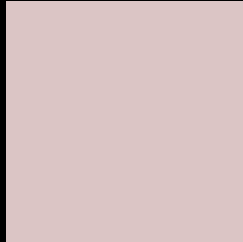
Large Text (above 18pt) WCAG AA × Fail

Any Text WCAG AA × Fail

Large Text (above 18pt) WCAG AAA × Fail

Any Text WCAG AAA × Fail

Black Background



This preview shows how the Hex color DBC5C5 looks on a black background.

Color Contrast Check

Large Text (above 18pt) WCAG AA ✓ Pass

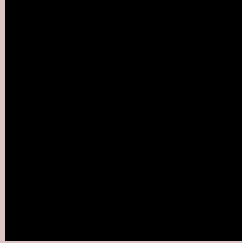
Any Text WCAG AA ✓ Pass

Large Text (above 18pt) WCAG AAA ✓ Pass

Any Text WCAG AAA ✓ Pass

If you want to check with other color combinations, try the [Color Contrast Checker](#).

Hex DBC5C5 Background



This preview shows how black text looks on a background with the Hex color DBC5C5.

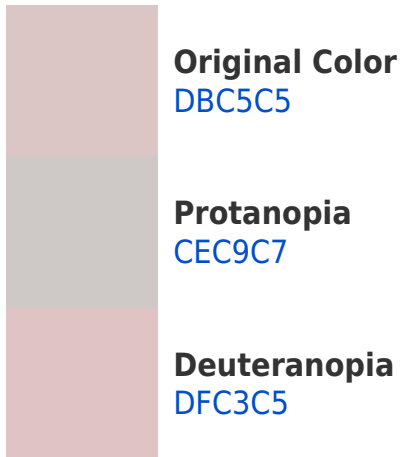


This preview shows how white text looks on a background with the Hex color DBC5C5.

Color Blindness Simulation

Color vision deficiency is a very complex topic, and I could not describe the different causes any better than Wikipedia does, so if you want to learn more, you should check out their [article about color blindness](#).

Dichromacy



Trichromacy



Original Color
DBC5C5

Protanomaly
D3C8C6

Deuteranomaly
DEC4C5

Tritanomaly
DCC4CD

Monochromacy



Original Color
DBC5C5

Achromatopsia
CCCCCC

Achromatomaly
D1C9C9

CSS Examples

Text

The CSS property to change the color of the text to Hex DBC5C5 is called "color". The color property can be set on classes, ids or directly on the HTML element.

This example shows how text in the color #DBC5C5 looks like.

```
.text, #text, p{  
    color:#DBC5C5  
}
```

If you want to add a text shadow in that color use the text-shadow property, you can generate a text shadow directly with our [CSS Text Shadow Generator](#).

Here you see how black text with a 4 pixel #DBC5C5 colored shadow looks like.

```
.shadow{ text-shadow: 4px 4px 2px #DBC5C5 }  
}
```

Border

The CSS property to change the border of an element to Hex DBC5C5 is called "border". The border property can be set on classes, ids or directly on the HTML element.

This example shows the color as border, it can be applied via the CSS property "border" or "border-color".

```
.border, #border, table{ border:4px solid #DBC5C5 }  
}
```

If only the border color should be changed use the property `border-color`.

```
.border{ border-color:#DBC5C5 }
```

If you want to add a box shadow in that color use:

Here you see how a box with a 4 pixel #DBC5C5 colored shadow looks like.

```
.boxshadow{ -moz-box-shadow:4px 4px 4px  
4px #DBC5C5; -webkit-box-shadow:4px 4px  
4px 4px #DBC5C5; box-shadow:4px 4px 4px  
4px #DBC5C5 }
```

Background

The CSS property to change the background color of an element to Hex DBC5C5 is called "background". The background property can be set on classes, ids or directly on the HTML element.

```
.background, #background, body{  
background:#DBC5C5 }
```

If only the background color should be changed can be used:

```
.background{ background-color:#DBC5C5 }
```

This example shows the color as background, it is applied via the CSS property "background".

To optimize and compress your CSS code, you can use our [online CSS compressor and optimizer](#) based on csstidy. If you want to create a linear or radial gradient as background or border, check our [CSS Gradient Generator](#).

Hey! You found this booklet interesting? Support Converting Colors with the new Membership Option!

The pro membership hides all ads, plus gives you double the colors in the color bucket, and more awesome pro features!

[Learn more, Memberships starting at \\$2.50/m!](#)

**Follow me
on Twitter!**

@ConvertingColor