

Converting Colors

Hex(DBC5C9)

Have a look what the booklet for
Hex(DBC5C9) contains.

Hex(DBC5C9)	3
<i>Conversions</i>	4
<i>Details</i>	6
<i>Harmonies</i>	11
<i>Previews</i>	23
<i>Color Blindness Simulation</i>	26
<i>CSS Examples</i>	29

Color

Hex(DBC5C9)

Conversions

Conversions Part 1

Format	Color
Hex	DBC5C9
RGB	219, 197, 201
RGB Percent	86%, 77%, 79%
CMY	0.1412, 0.2275, 0.2118
CMYK	0.00, 0.10, 0.08, 0.14
HSL	349°, 23%, 82%
HSV	349°, 10%, 86%
XYZ	59.7223, 59.2096, 63.5392
YIQ	204.0340, 11.8280, 5.9080

Conversions

Conversions Part 2

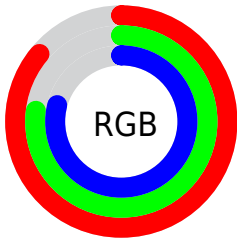
Format	Color
R _Y B	219, 197, 201
Decimal	14403017
CIE Lab	81.41, 8.40, 0.81
CIE LCh	81, 8.438, 5.518
Yxy	59.2096, 0.3273, 0.3245
Android (android.graphics.Color)	4292593097 (0xFFDBC5C9)
YUV	204.0340, -1.4958, 13.1252
Hunter-Lab	76.9478, 3.8824, 4.9050

Details

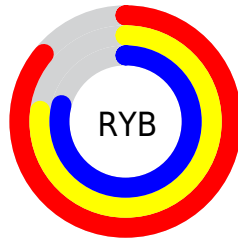
The Hex color **DBC5C9** is a light color, and the websafe version is hex **CCCCCC**. A complement of this color would be **C5DBD7**, and the grayscale version is **CCCCCC**.

A 20% lighter version of the original color is **FFFEFF**, and **A48F93** is the 20% darker color. If you saturate the color by 10%, you get **DBAFB7**, and if you desaturate by 10%, it is **DBDBDB**.

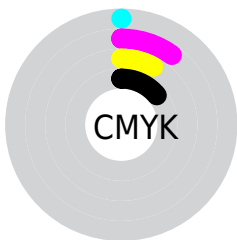
Distribution



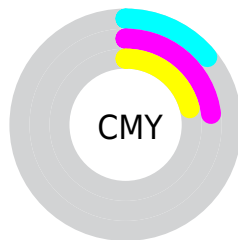
- Red (86%)
- Green (77%)
- Blue (79%)



- Red (86%)
- Yellow (77%)
- Blue (79%)



- Cyan (0%)
- Magenta (10%)
- Yellow (8%)
- Black (14%)



- Cyan (14%)
- Magenta (23%)
- Yellow (21%)

Brightness & Saturation Gradients

These gradients show how the Hex color DBC5C9 changes by changing the brightness by 10 percent. The first figure shows a shift by +10% for each color and the second figure -10%.

Similar to the brightness gradients but the following saturation gradients show a change of the Hex color DBC5C9 by changing the saturation by 10% instead.

 DBC5C9

FFFFFF

FFFEFF

 DBC5C9

 BFAAAA

 A48F93

 8A7679

 705D61

 574549

 402F32

 2A1A1D

 170004

 000000

 DBC5C9

 DBC5C9

 DBAFB7

 DBDBDB

 DB99A5

 DBF1ED

 DB8393

 DBFFFF

 DB6D81

 DB586F

 DB425D

 DB2C4C

 DB163A

 DB0028

Harmonies

Analogous

The Analogous color harmony consists of three colors that are next to each other on the color wheel.



D6C6D1



DBC5C9



DBC6C1

Triad

The Triadic color harmony groups three colors that are evenly spaced from another and form a triangle on the color wheel.



DBC5C9



C6CDBD



BCCDD8

Complementary

The Complementary color scheme is a pair of colors which are on the opposite of each other on the color wheel.



DBC5C9



C5DBD7

Split Complementary

Split-complementary colors differ from the complementary color scheme. The scheme consists of three colors, the original color and two neighbors of the complement color.



B7CFD3



DBC5C9



BECEC3

Square

The Square scheme is like the rectangle color scheme, but the four colors are evenly spaced on the color wheel.



DBC5C9



D0CABB



B8CFCB



C4CADA

Rectangle

The Rectangle color scheme consists of four colors that form a rectangle on the color wheel.



DBC5C9



D9C7BD



B8CFCB



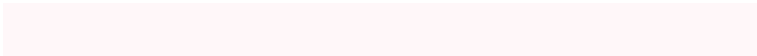
BACED7

Sweetspot

The Sweet Spot groups the original color and five complimentary colors.



DBC5C9



FFF7F9



D7C5DB



807A7B



000000



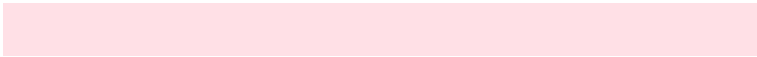
808080

Same Dimension

The Same Dimension uses a secret algorithm to generate beautiful new colors.



DBC5C9



FFE0E6



DBCCC5



6E6365



AD0020



2E0008

Inverse Universe

The Inverse Universe completely reimagines the original color for something new.



DBC5C9



FFE0E6



C5D4DB



6E6365



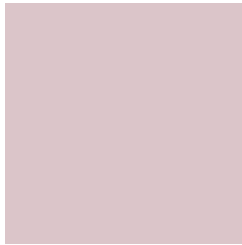
AD0020



2E0008

Previews

White Background



This preview shows how the Hex color DBC5C9 looks on a white background.

Color Contrast Check

Large Text (above 18pt) WCAG AA × Fail

Any Text WCAG AA × Fail

Large Text (above 18pt) WCAG AAA × Fail

Any Text WCAG AAA × Fail

Black Background



This preview shows how the Hex color DBC5C9 looks on a black background.

Color Contrast Check

Large Text (above 18pt) WCAG AA ✓ Pass

Any Text WCAG AA ✓ Pass

Large Text (above 18pt) WCAG AAA ✓ Pass

Any Text WCAG AAA ✓ Pass

If you want to check with other color combinations, try the [Color Contrast Checker](#).

Hex DBC5C9 Background



This preview shows how black text looks on a background with the Hex color DBC5C9.

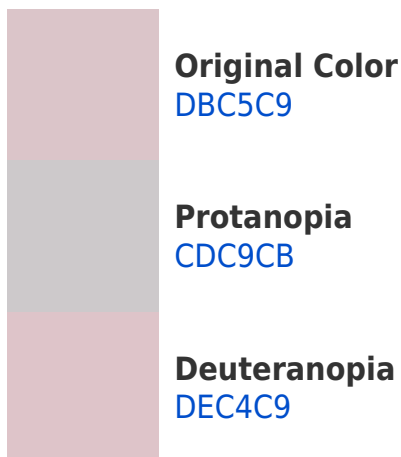


This preview shows how white text looks on a background with the Hex color DBC5C9.

Color Blindness Simulation

Color vision deficiency is a very complex topic, and I could not describe the different causes any better than Wikipedia does, so if you want to learn more, you should check out their [article about color blindness](#).

Dichromacy



Trichromacy



Original Color
DBC5C9

Protanomaly
D2C8CA

Deuteranomaly
DDC4C9

Tritanomaly
DCC4CF

Monochromacy



Original Color
DBC5C9

Achromatopsia
CCCCCC

Achromatomaly
D1C9CB

CSS Examples

Text

The CSS property to change the color of the text to Hex DBC5C9 is called "color". The color property can be set on classes, ids or directly on the HTML element.

This example shows how text in the color #DBC5C9 looks like.

```
.text, #text, p{  
    color:#DBC5C9  
}
```

If you want to add a text shadow in that color use the text-shadow property, you can generate a text shadow directly with our [CSS Text Shadow Generator](#).

Here you see how black text with a 4 pixel #DBC5C9 colored shadow looks like.

```
.shadow{ text-shadow: 4px 4px 2px #DBC5C9
}
```

Border

The CSS property to change the border of an element to Hex DBC5C9 is called "border". The border property can be set on classes, ids or directly on the HTML element.

This example shows the color as border, it can be applied via the CSS property "border" or "border-color".

```
.border, #border, table{ border:4px solid
#DBC5C9 }
```

If only the border color should be changed use the property `border-color`.

```
.border{ border-color:#DBC5C9 }
```

If you want to add a box shadow in that color use:

Here you see how a box with a 4 pixel #DBC5C9 colored shadow looks like.

```
.boxshadow{ -moz-box-shadow:4px 4px 4px  
4px #DBC5C9; -webkit-box-shadow:4px 4px  
4px 4px #DBC5C9; box-shadow:4px 4px 4px  
4px #DBC5C9 }
```

Background

The CSS property to change the background color of an element to Hex DBC5C9 is called "background". The background property can be set on classes, ids or directly on the HTML element.

```
.background, #background, body{  
background:#DBC5C9 }
```

If only the background color should be changed can be used:

```
.background{ background-color:#DBC5C9 }
```

This example shows the color as background, it is applied via the CSS property "background".

To optimize and compress your CSS code, you can use our [online CSS compressor and optimizer](#) based on csstidy. If you want to create a linear or radial gradient as background or border, check our [CSS Gradient Generator](#).

Hey! You found this booklet interesting? Support Converting Colors with the new Membership Option!

The pro membership hides all ads, plus gives you double the colors in the color bucket, and more awesome pro features!

[Learn more, Memberships starting at \\$2.50/m!](#)

**Follow me
on Twitter!**

@ConvertingColor