

# Converting Colors

Hex(DBC5D1)

Have a look what the booklet for  
Hex(DBC5D1) contains.

<b>Hex(DBC5D1)</b> .....	3
<i><b>Conversions</b></i> .....	4
<i><b>Details</b></i> .....	6
<i><b>Harmonies</b></i> .....	11
<i><b>Previews</b></i> .....	23
<i><b>Color Blindness Simulation</b></i> .....	26
<i><b>CSS Examples</b></i> .....	29

# **Color**

**Hex(DBC5D1)**

# Conversions

## Conversions Part 1

Format	Color
Hex	DBC5D1
RGB	219, 197, 209
RGB Percent	86%, 77%, 82%
CMY	0.1412, 0.2275, 0.1804
CMYK	0.00, 0.10, 0.05, 0.14
HSL	327°, 23%, 82%
HSV	327°, 10%, 86%
XYZ	60.6883, 59.5960, 68.6262
YIQ	204.9460, 9.2600, 8.3960

# Conversions

## Conversions Part 2

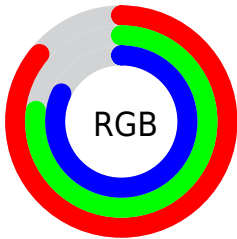
<b>Format</b>	<b>Color</b>
R <sub>Y</sub> B	219, 197, 209
Decimal	14403025
CIE Lab	81.62, 9.78, -3.17
CIE LCh	82, 10.285, 342.047
Yxy	59.5960, 0.3213, 0.3155
Android (android.graphics.Color)	4292593105 (0xFFDBC5D1)
YUV	204.9460, 1.9986, 12.3254
Hunter-Lab	77.1985, 5.2275, 1.3326

# Details

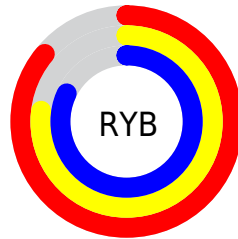
The Hex color **DBC5D1** is a light color, and the websafe version is hex **CCCCCC**. A complement of this color would be **C5DBCf**, and the grayscale version is **CDCDCD**.

A 20% lighter version of the original color is **FFFEFF**, and **A48F9B** is the 20% darker color. If you saturate the color by 10%, you get **DBAFC7**, and if you desaturate by 10%, it is **DBDBDB**.

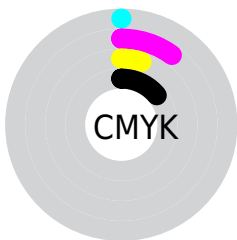
# Distribution



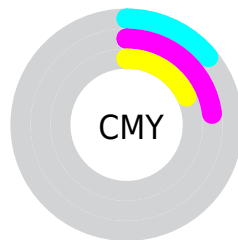
- Red (86%)
- Green (77%)
- Blue (82%)



- Red (86%)
- Yellow (77%)
- Blue (82%)



- Cyan (0%)
- Magenta (10%)
- Yellow (5%)
- Black (14%)



- Cyan (14%)
- Magenta (23%)
- Yellow (18%)

# Brightness & Saturation Gradients

These gradients show how the Hex color DBC5D1 changes by changing the brightness by 10 percent. The first figure shows a shift by +10% for each color and the second figure -10%.

Similar to the brightness gradients but the following saturation gradients show a change of the Hex color DBC5D1 by changing the saturation by 10% instead.



■ DBC5D1

FFFFFF

FFFEFF

■ DBC5D1

■ BFAAB5

■ A48F9B

■ 8A7681

■ 705D68

■ 584550

■ 402F39

■ 2A1A23

■ 17000E

■ 000000

 DBC5D1

 DBC5D1

 DBAFC7

 DBDBDB

 DB99BD

 DBF1E5

 DB83B3

 DBFFEF

 DB6DA9

 DBFFF9

 DB589F

 DBFFFF

 DB4295

 DB2C8B

 DB1681

 DB0077

# Harmonies

## Analogous

The Analogous color harmony consists of three colors that are next to each other on the color wheel.



D2C7D9



DBC5D1



E0C4C7

# Triad

The Triadic color harmony groups three colors that are evenly spaced from another and form a triangle on the color wheel.



DBC5D1



CFCBB8



B4D0D7

# Complementary

The Complementary color scheme is a pair of colors which are on the opposite of each other on the color wheel.



DBC5D1



C5DBC5

# Split Complementary

Split-complementary colors differ from the complementary color scheme. The scheme consists of three colors, the original color and two neighbors of the complement color.



B4D1CE



DBC5D1



C4CEBC

# Square

The Square scheme is like the rectangle color scheme, but the four colors are evenly spaced on the color wheel.



DBC5D1



D9C8B9



BAD0C5



BBCDDD

# Rectangle

The Rectangle color scheme consists of four colors that form a rectangle on the color wheel.



DBC5D1



E0C5C1



BAD0C5



B3D0D5



# Sweetspot

The Sweet Spot groups the original color and five complimentary colors.



DBC5D1



FFF7FC



CFC5DB



807A7D



000000



808080



# Same Dimension

The Same Dimension uses a secret algorithm to generate beautiful new colors.



DBC5D1



FFE0F1



DBC5C6



6E6369



AD005F



2E0019



# Inverse Universe

The Inverse Universe completely reimagines the original color for something new.



DBC5D1



FFE0F1



C5DBDA



6E6369



AD005F

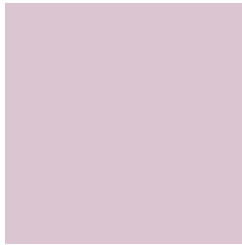


2E0019



# Previews

## White Background



This preview shows how the Hex color DBC5D1 looks on a white background.

## Color Contrast Check

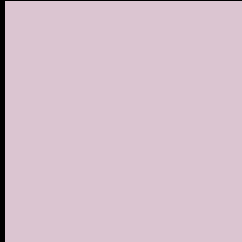
Large Text (above 18pt) WCAG AA × Fail

Any Text WCAG AA × Fail

Large Text (above 18pt) WCAG AAA × Fail

Any Text WCAG AAA × Fail

# Black Background



This preview shows how the Hex color DBC5D1 looks on a black background.

## Color Contrast Check

Large Text (above 18pt) WCAG AA ✓ Pass

Any Text WCAG AA ✓ Pass

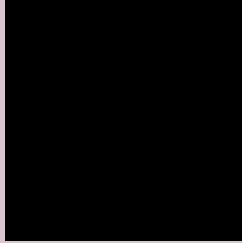
Large Text (above 18pt) WCAG AAA ✓ Pass

Any Text WCAG AAA ✓ Pass

If you want to check with other color combinations, try the [Color Contrast Checker](#).



## Hex DBC5D1 Background



This preview shows how black text looks on a background with the Hex color DBC5D1.

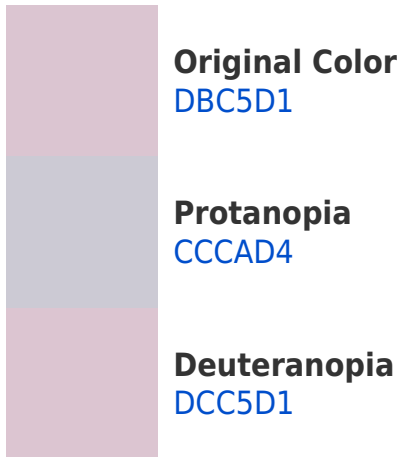


This preview shows how white text looks on a background with the Hex color DBC5D1.

# Color Blindness Simulation

Color vision deficiency is a very complex topic, and I could not describe the different causes any better than Wikipedia does, so if you want to learn more, you should check out their [article about color blindness](#).

## Dichromacy





**Tritanopia**  
DBC5D4

# Trichromacy



**Original Color**  
DBC5D1

**Protanomaly**  
D1C8D3

**Deuteranomaly**  
DCC5D1

**Tritanomaly**  
DBC5D3

# Monochromacy



**Original Color**  
DBC5D1

**Achromatopsia**  
CDCDCD

**Achromatomaly**  
D2CACE

# CSS Examples

## Text

The CSS property to change the color of the text to Hex DBC5D1 is called "color". The color property can be set on classes, ids or directly on the HTML element.

This example shows how text in the color #DBC5D1 looks like.

```
.text, #text, p{  
    color:#DBC5D1  
}
```

If you want to add a text shadow in that color use the text-shadow property, you can generate a text shadow directly with our [CSS Text Shadow Generator](#).

Here you see how black text with a 4 pixel #DBC5D1 colored shadow looks like.

```
.shadow{ text-shadow: 4px 4px 2px #DBC5D1
}
```

## Border

The CSS property to change the border of an element to Hex DBC5D1 is called "border". The border property can be set on classes, ids or directly on the HTML element.

This example shows the color as border, it can be applied via the CSS property "border" or "border-color".

```
.border, #border, table{ border:4px solid
#DBC5D1 }
```

If only the border color should be changed use the property `border-color`.

```
.border{ border-color:#DBC5D1 }
```

If you want to add a box shadow in that color use:

Here you see how a box with a 4 pixel #DBC5D1 colored shadow looks like.

```
.boxshadow{ -moz-box-shadow:4px 4px 4px  
4px #DBC5D1; -webkit-box-shadow:4px 4px  
4px 4px #DBC5D1; box-shadow:4px 4px 4px  
4px #DBC5D1 }
```

# Background

The CSS property to change the background color of an element to Hex DBC5D1 is called "background". The background property can be set on classes, ids or directly on the HTML element.

```
.background, #background, body{  
background:#DBC5D1 }
```

If only the background color should be changed can be used:

```
.background{ background-color:#DBC5D1 }
```

This example shows the color as background, it is applied via the CSS property "background".

To optimize and compress your CSS code, you can use our [online CSS compressor and optimizer](#) based on csstidy. If you want to create a linear or radial gradient as background or border, check our [CSS Gradient Generator](#).



Hey! You found this booklet interesting? Support Converting Colors with the new Membership Option!

The pro membership hides all ads, plus gives you double the colors in the color bucket, and more awesome pro features!

**[Learn more, Memberships starting at \\$2.50/m!](#)**

**Follow me  
on Twitter!**

@ConvertingColor